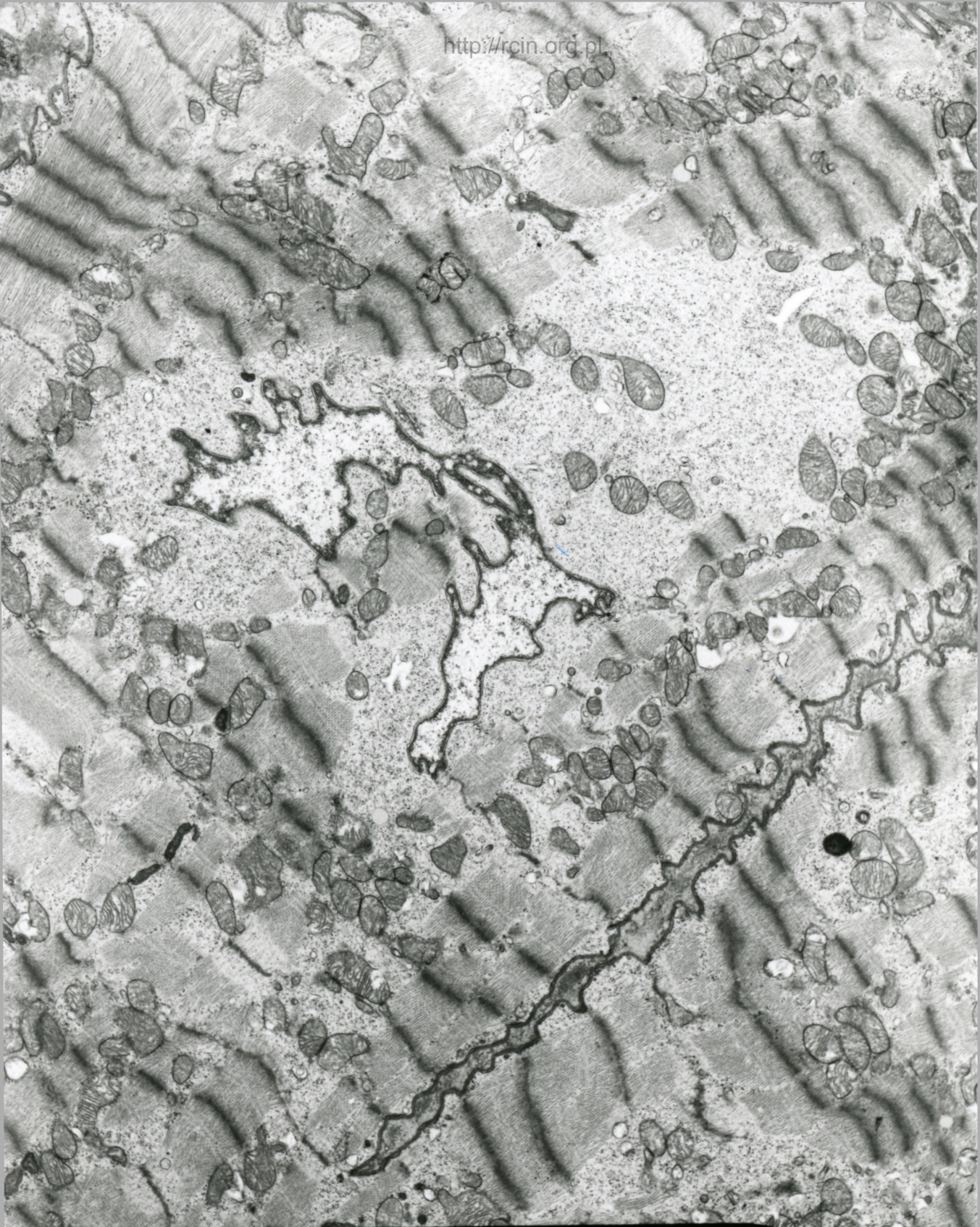


AF 39/08/SERCE
082669 80.0KV X3000

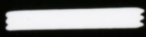


2µm

Fig. 1

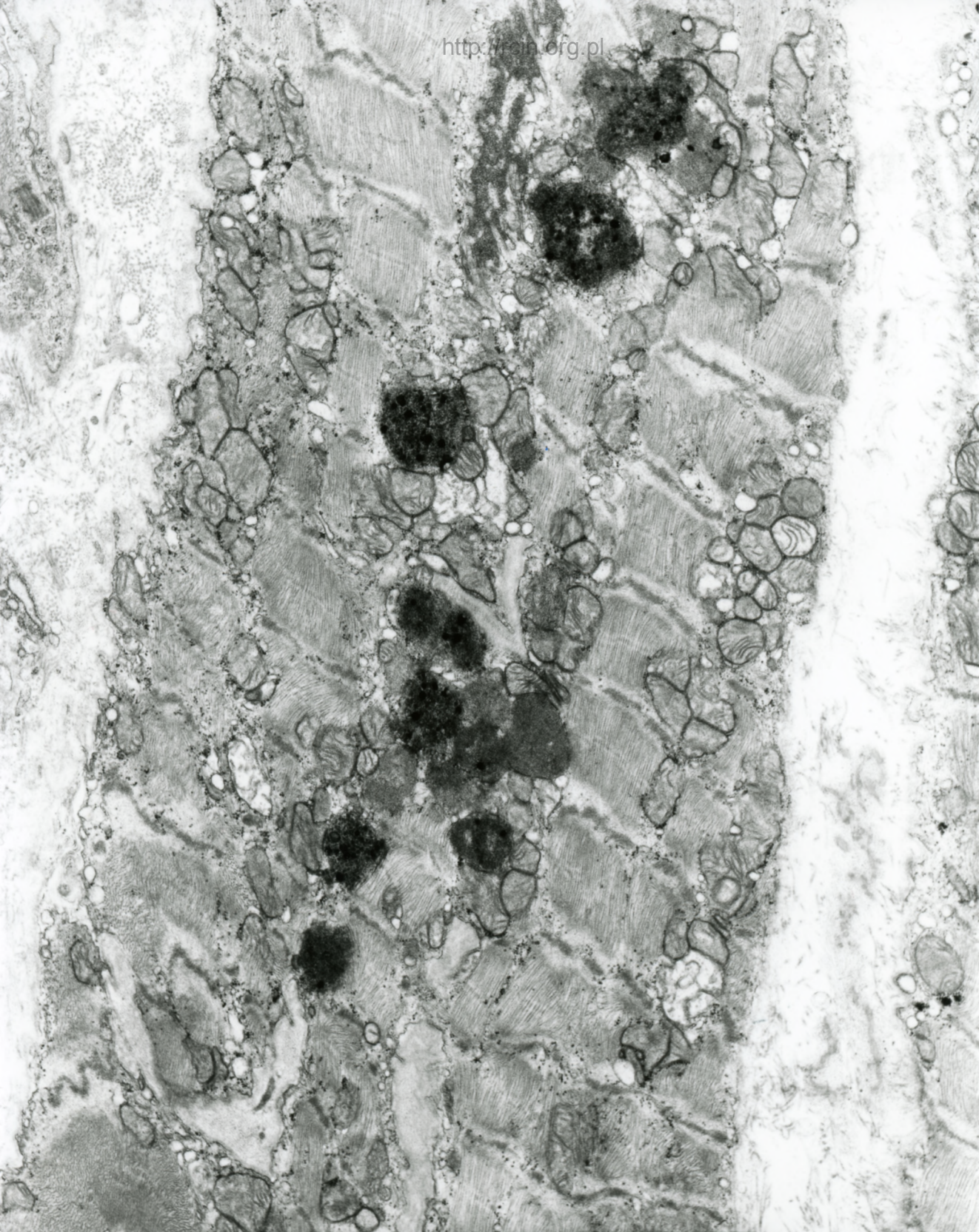


AF 39/88/SERCE
082671 80.0KV X3000



2µm

Fig. 2



AF 39/88/SERCE
082670 80.0KV X5000

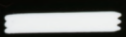
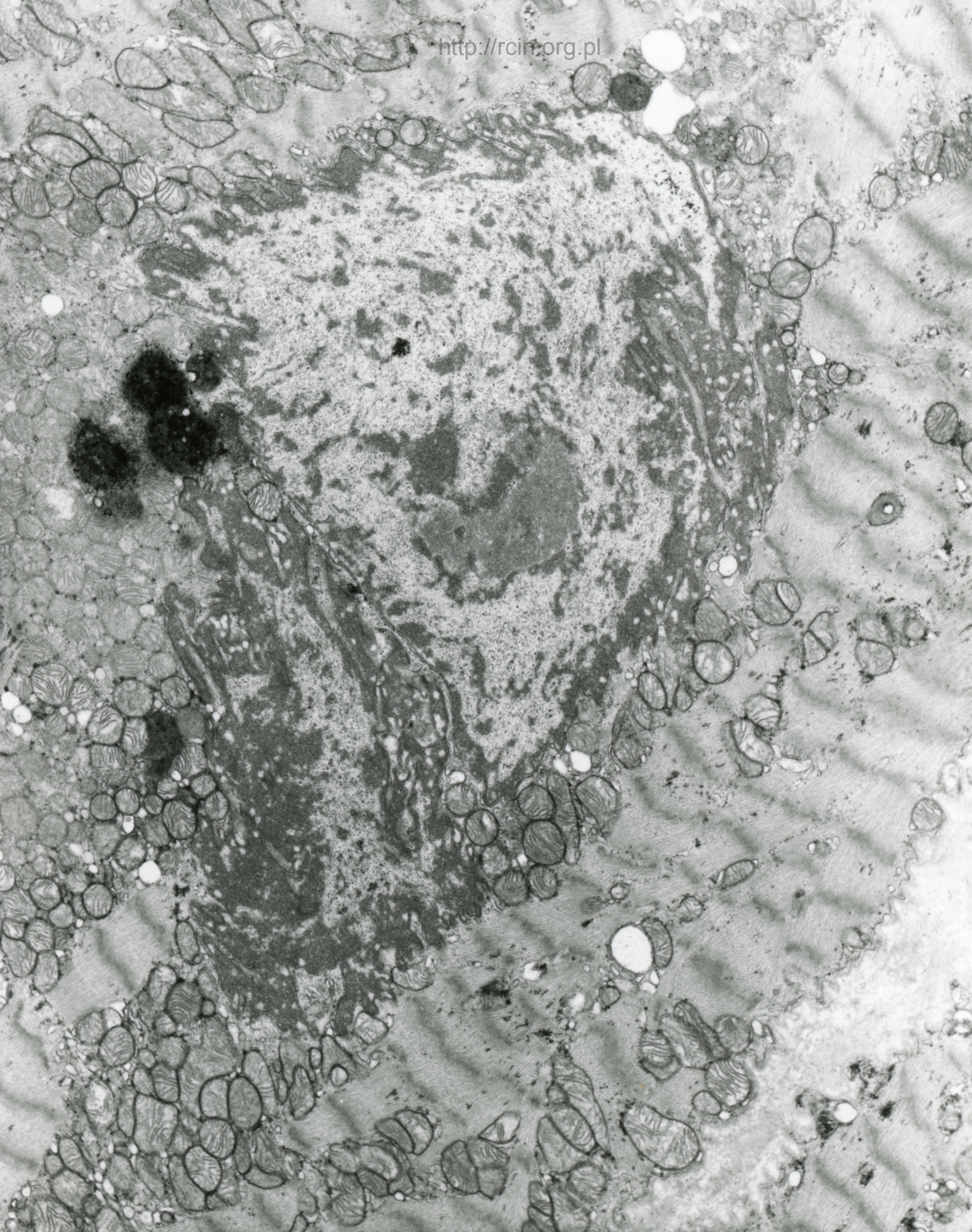
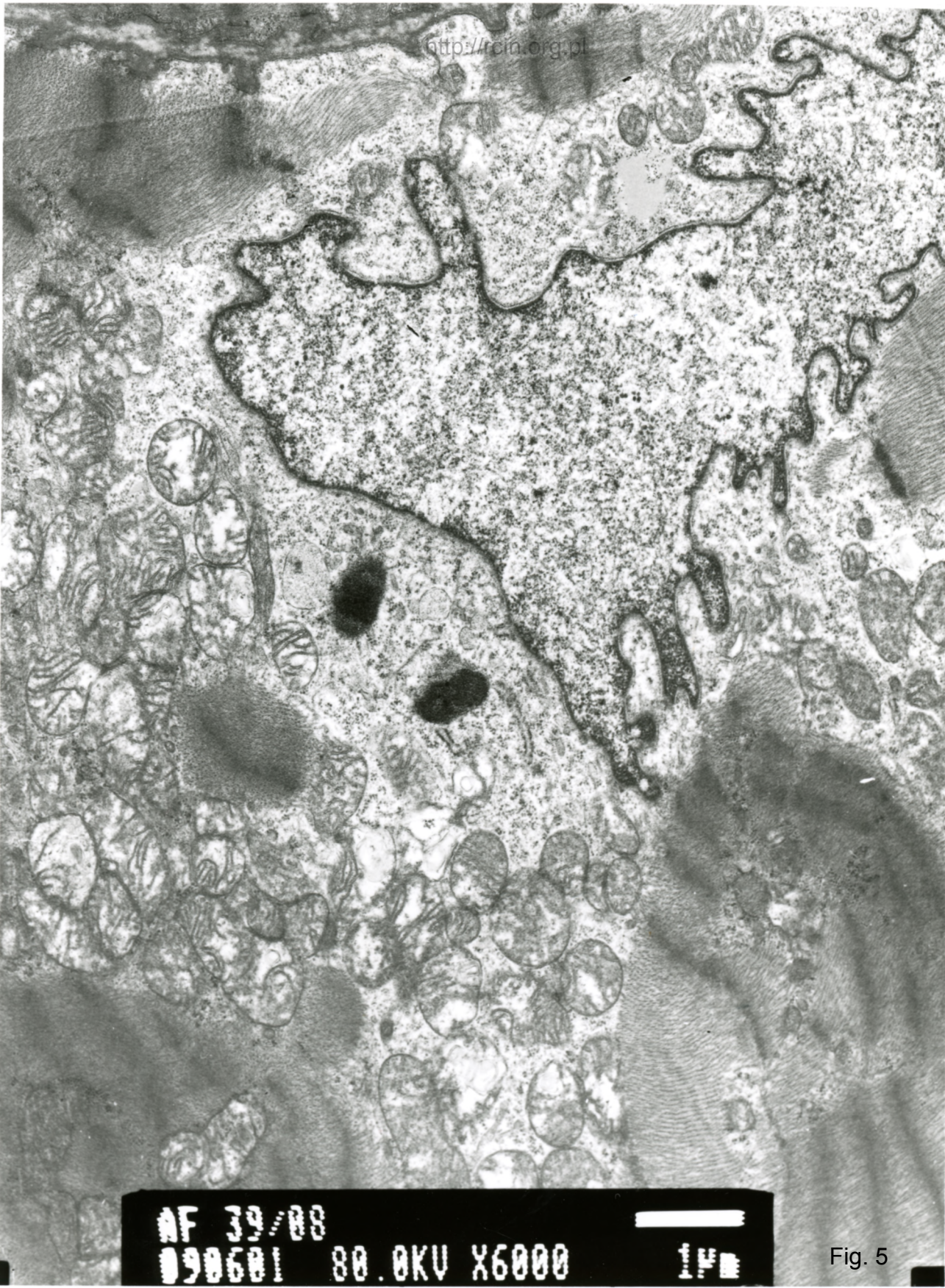


Fig. 3



AF 39/88/SERCE
082672 80.0KV X4000 24

Fig. 4



AF 39/88
090601 80.0KV X6000 1µm

Fig. 5

39/08

1. 58

Niewydolność mięśnia sercowego

Analiza ultrastrukturalna wykazała dezorganizację sarkomerów i cechy cytolizy w niektórych kardiomiocytach (Fig. 1, 2). W sarkoplazmie obecne były liczne lizosomy (Fig.3). Jądra kardiomiocytów charakteryzowały się nieregularnym kształtem i ogniskowym przerwaniem otoczki jądrowej (Fig. 4,5).

Heart failure

Ultrastructural analysis revealed sarcomeres disorganization as well as features of cytolysis in some cardiomyocytes (Figs. 1, 2). Numerous lysosomes were present in the sarcoplasm (Fig. 3). Cardiomyocyte nuclei were characterized by irregular shape and focally breaks in the nuclear envelope (Figs. 4.5).