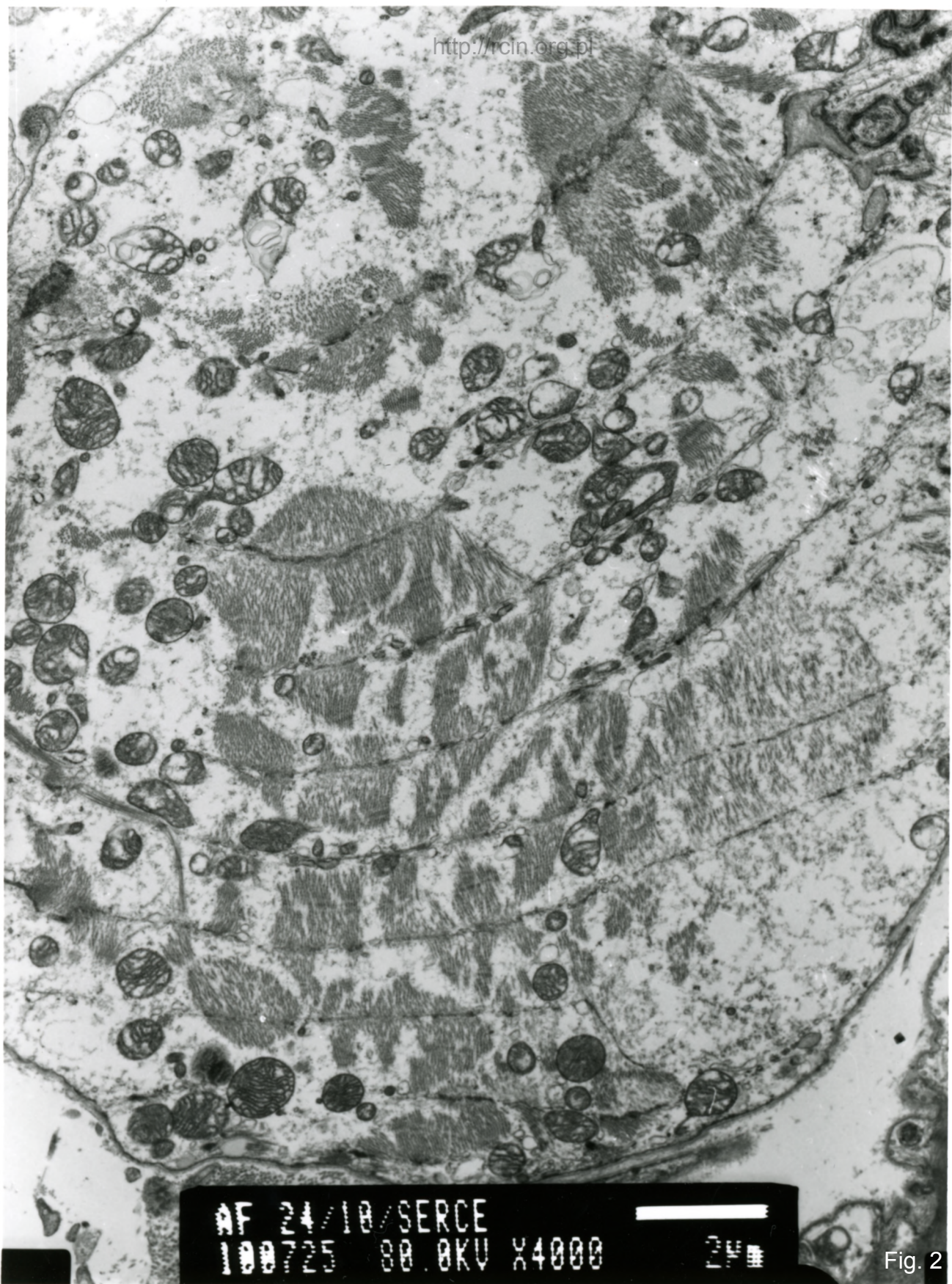




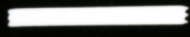
AF 24/10/SERCE
100726 80.0KV X2500



Fig. 1

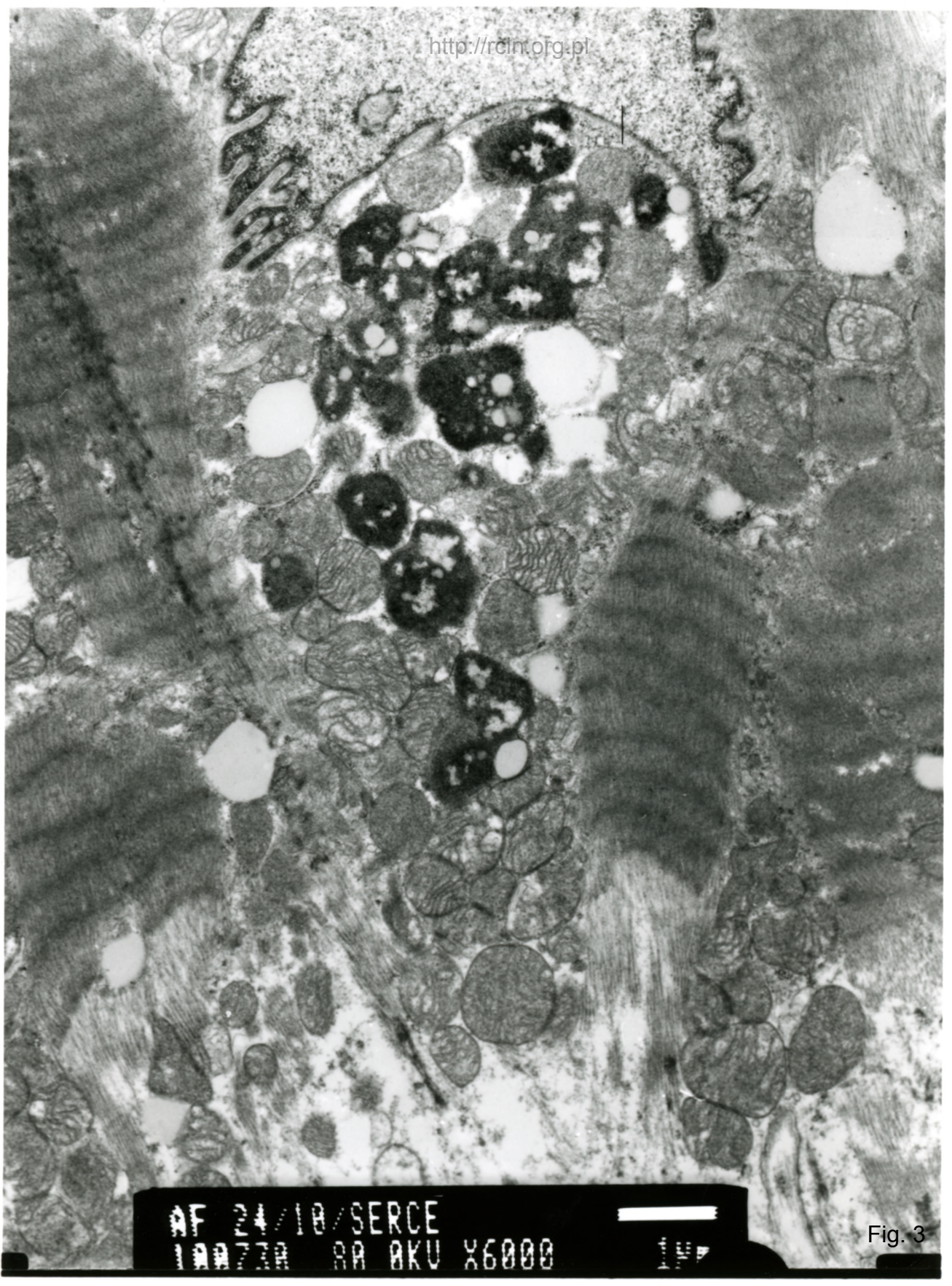


AF 24/10/SERCE
100725 80.0KV X4000



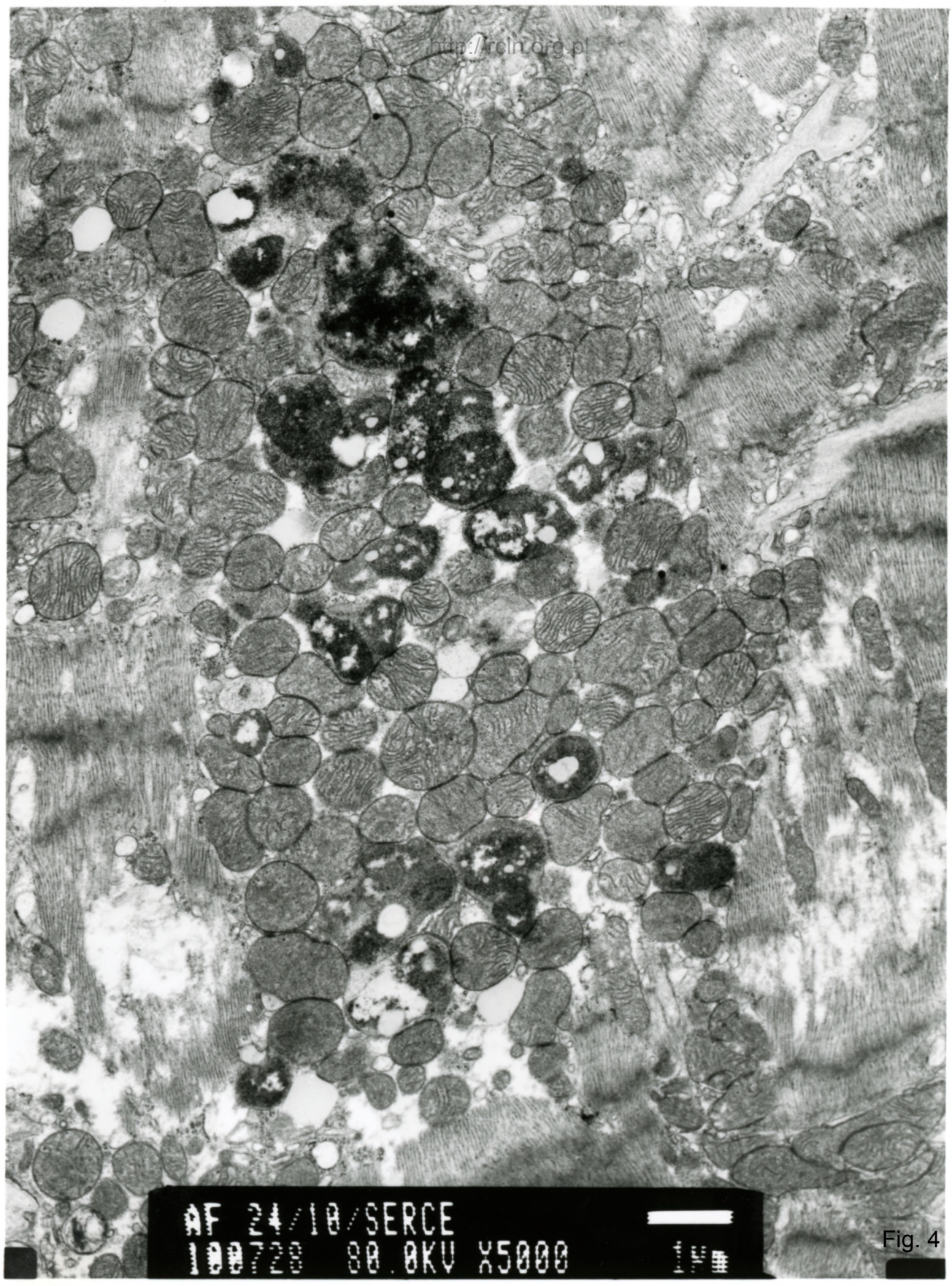
2µm

Fig. 2



AF 24/10/SERCE
100730 RA BKU X6000

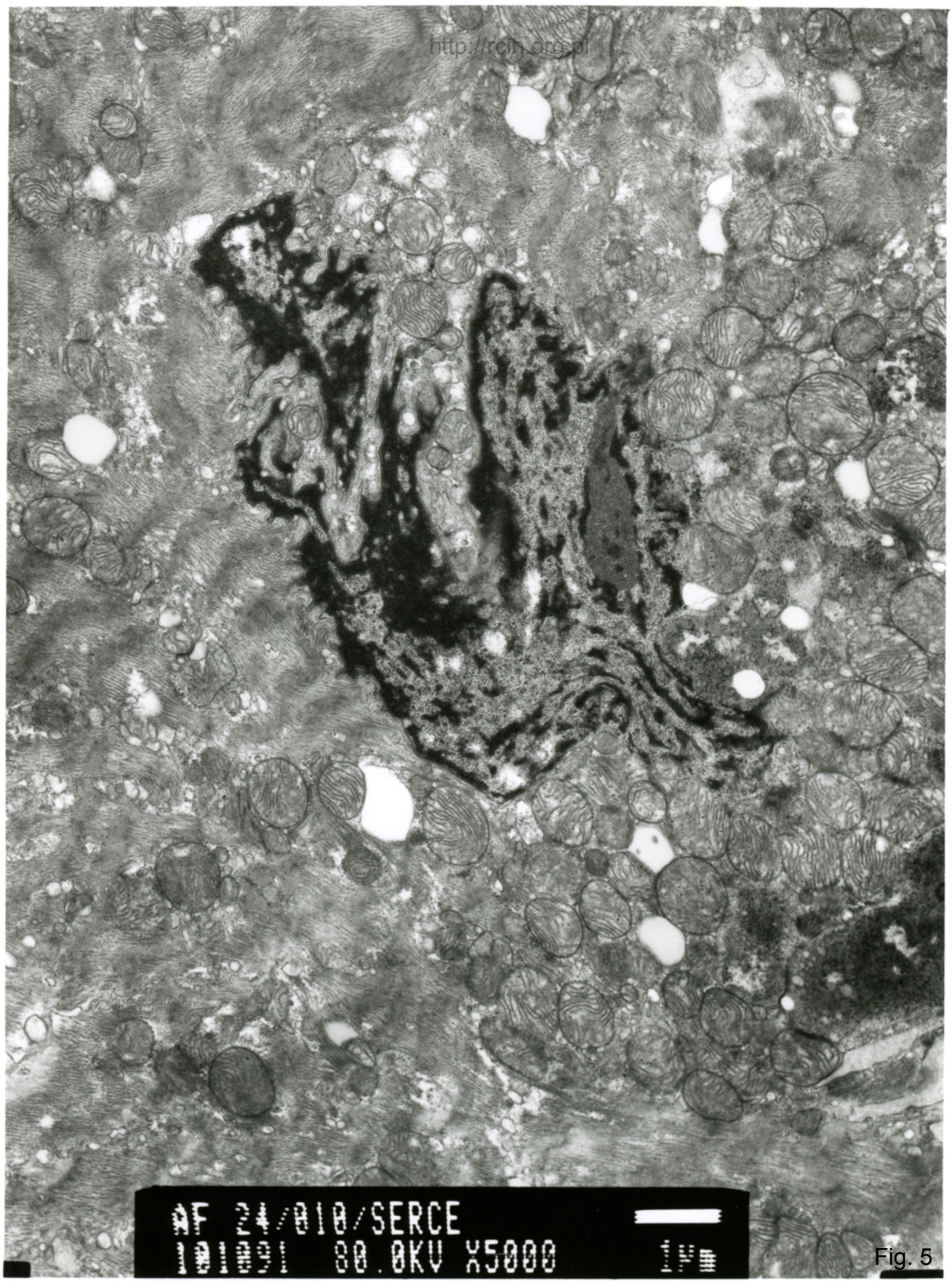
Fig. 3



AF 24/10/SERCE
100720 80.0KV X5000

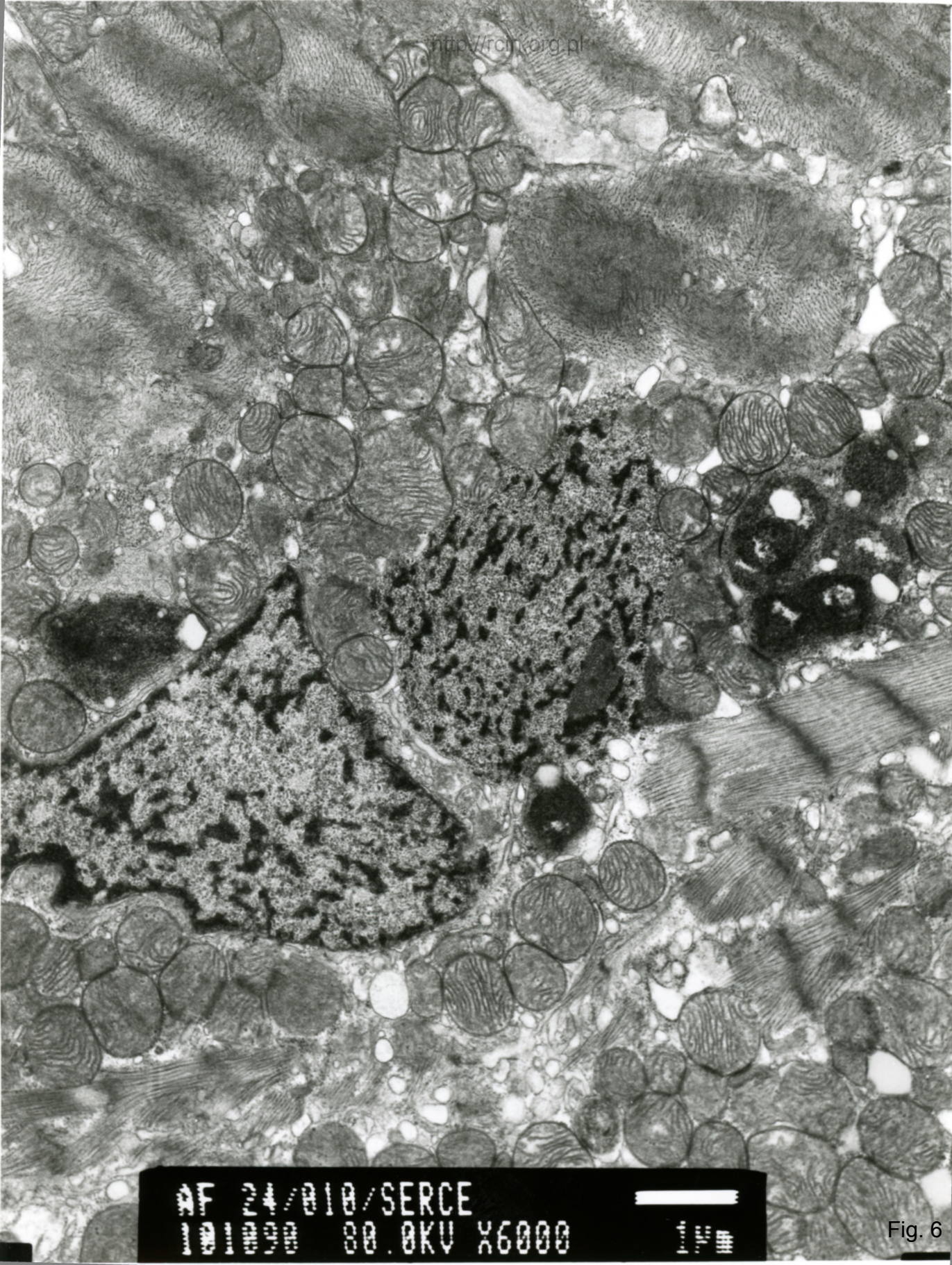


Fig. 4



AF 24/010/SERCE
101031 80.0KV X5000

Fig. 5



AF 24/010/SERCE
101000 80.0KV X6000

Fig. 6

24/10

1. 53

Niewydolność mięśnia sercowego

Analiza ultrastrukturalna wykazała dezorganizację sarkomerów (Fig. 1, 2). W sarkoplazmie obecne były liczne lizosomy (Fig.3,4). Jądra kardiomiocytów charakteryzowały się nieregularnym kształtem i ogniskowym przerwaniem otoczki jądrowej (Fig. 5,6).

Myocardial failure

Electron microscopy analysis revealed disorganization of the sarcomeres (Fig. 1, 2). Numerous lysosomes were present in the sarcoplasm (Figs. 3,4). Cardiomyocytes nuclei were characterized by irregular shape and focally breaks of the nuclear envelope were seen (Figs. 5,6).