

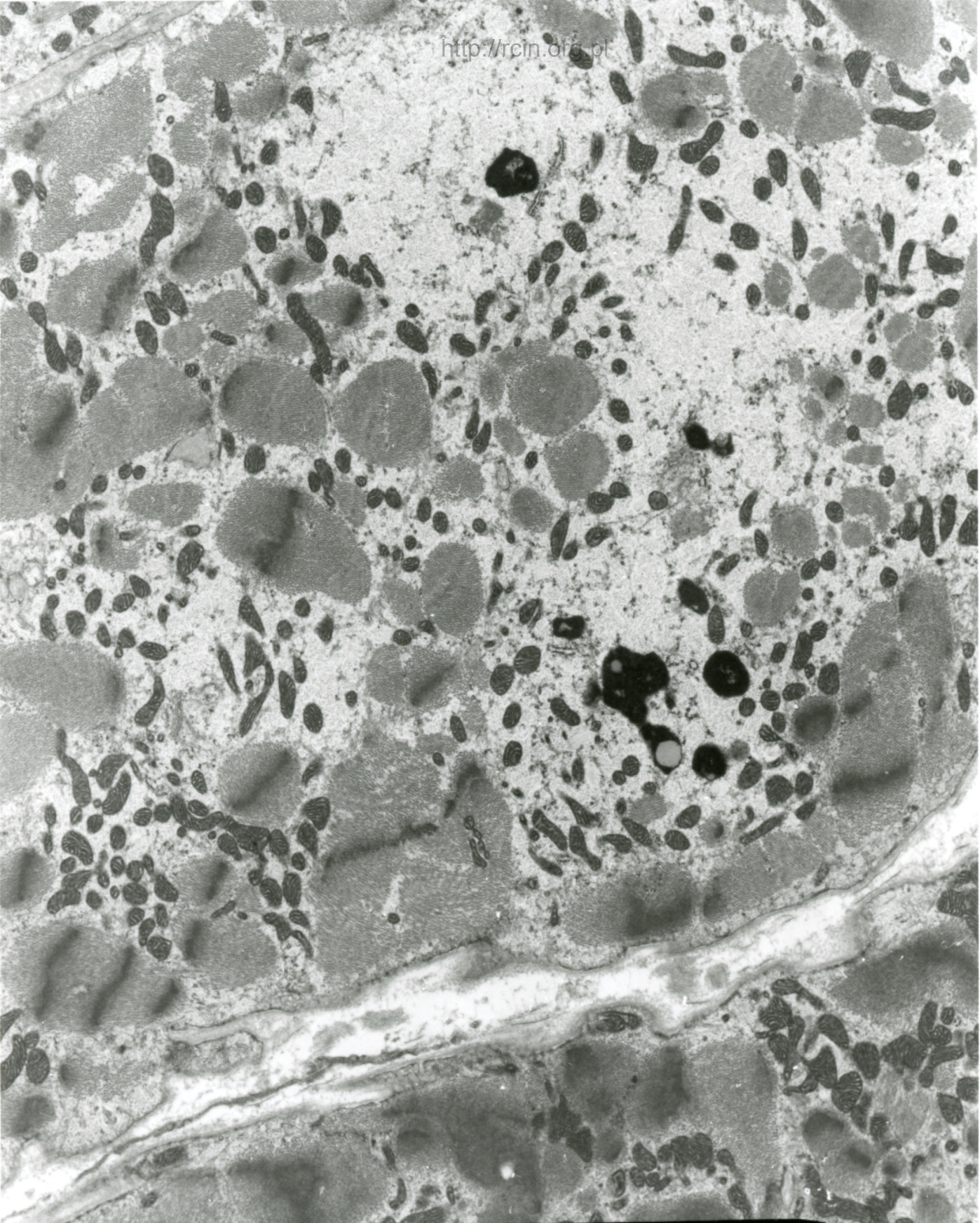
AF 67/89/

091004

80.0KV X3000

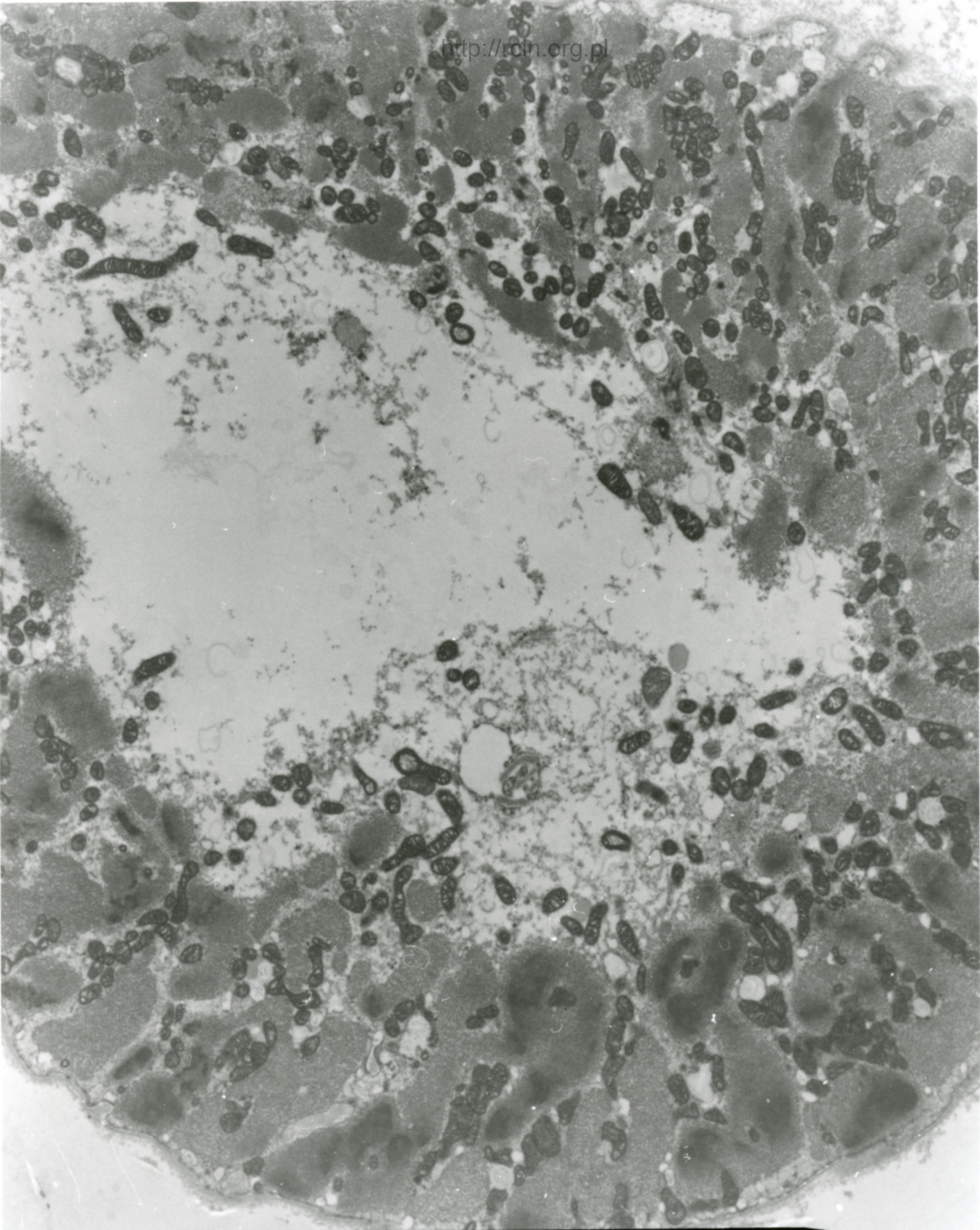
2µm

Fig. 1



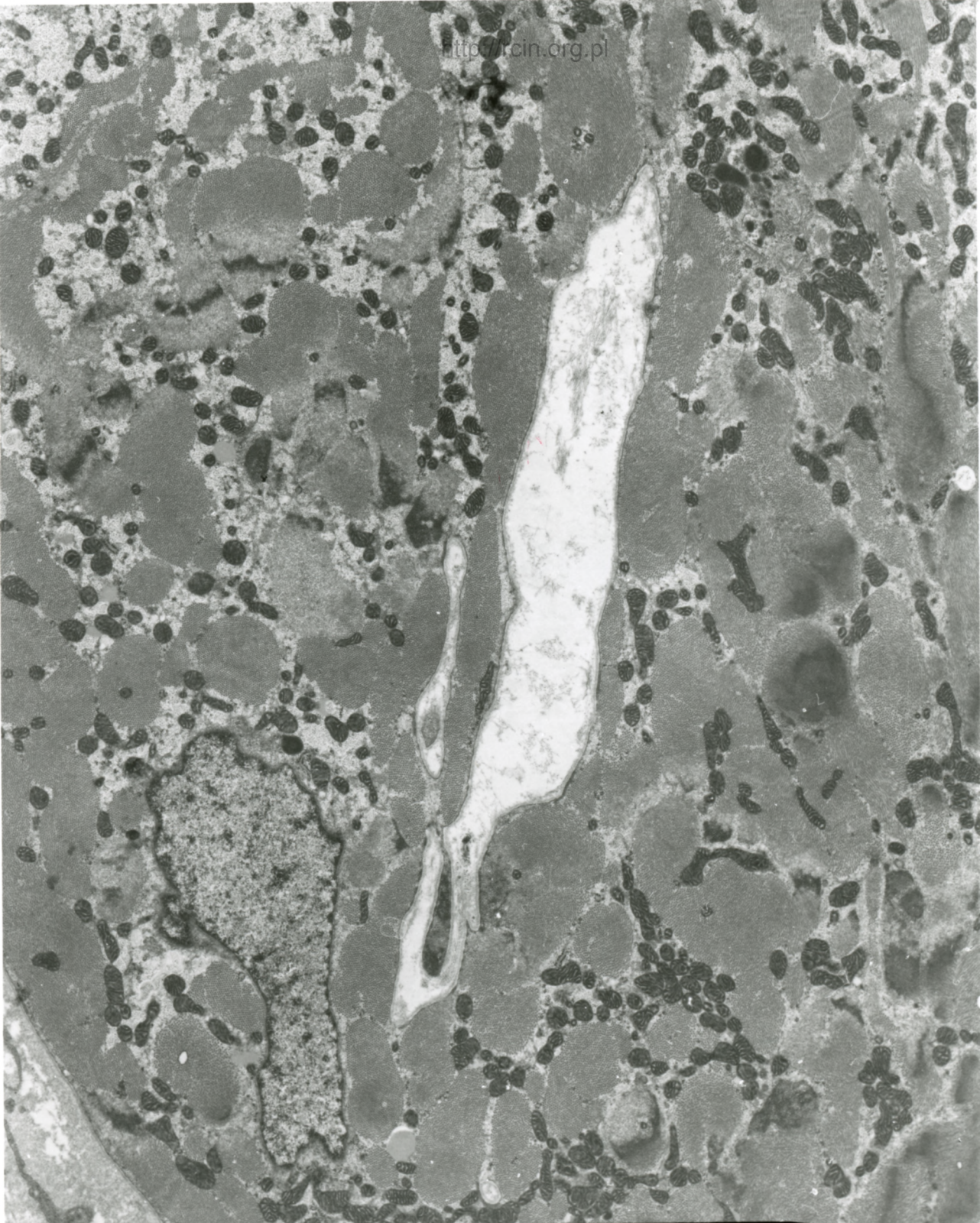
AF 67/89/
091006 80.0KV X3000 2µm

Fig. 2



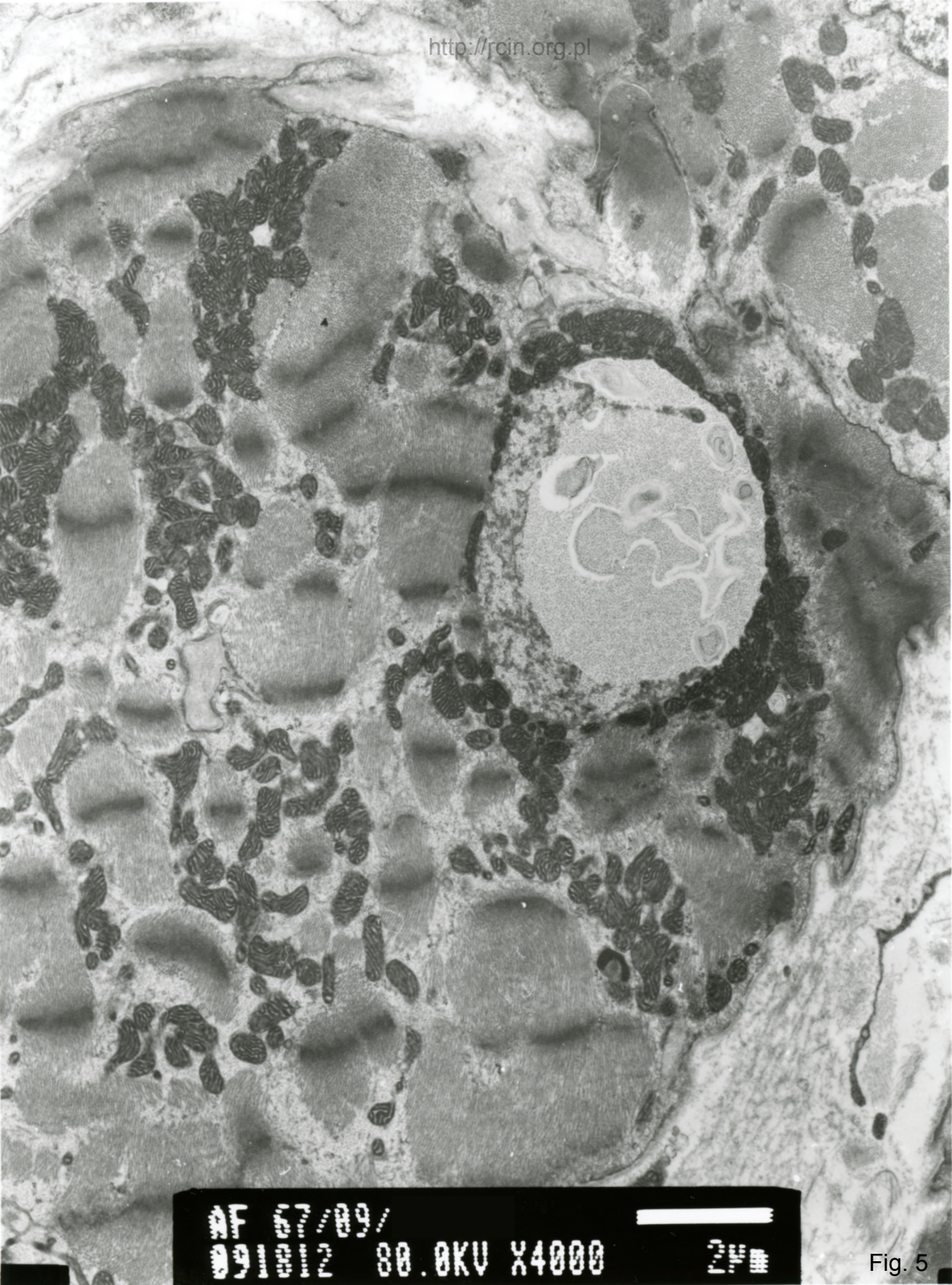
AF 67/09/
091010 80.0KV X3000 24

Fig. 3

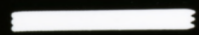


AF 67/89/
091004 80.0KV X3000 2µm

Fig. 4

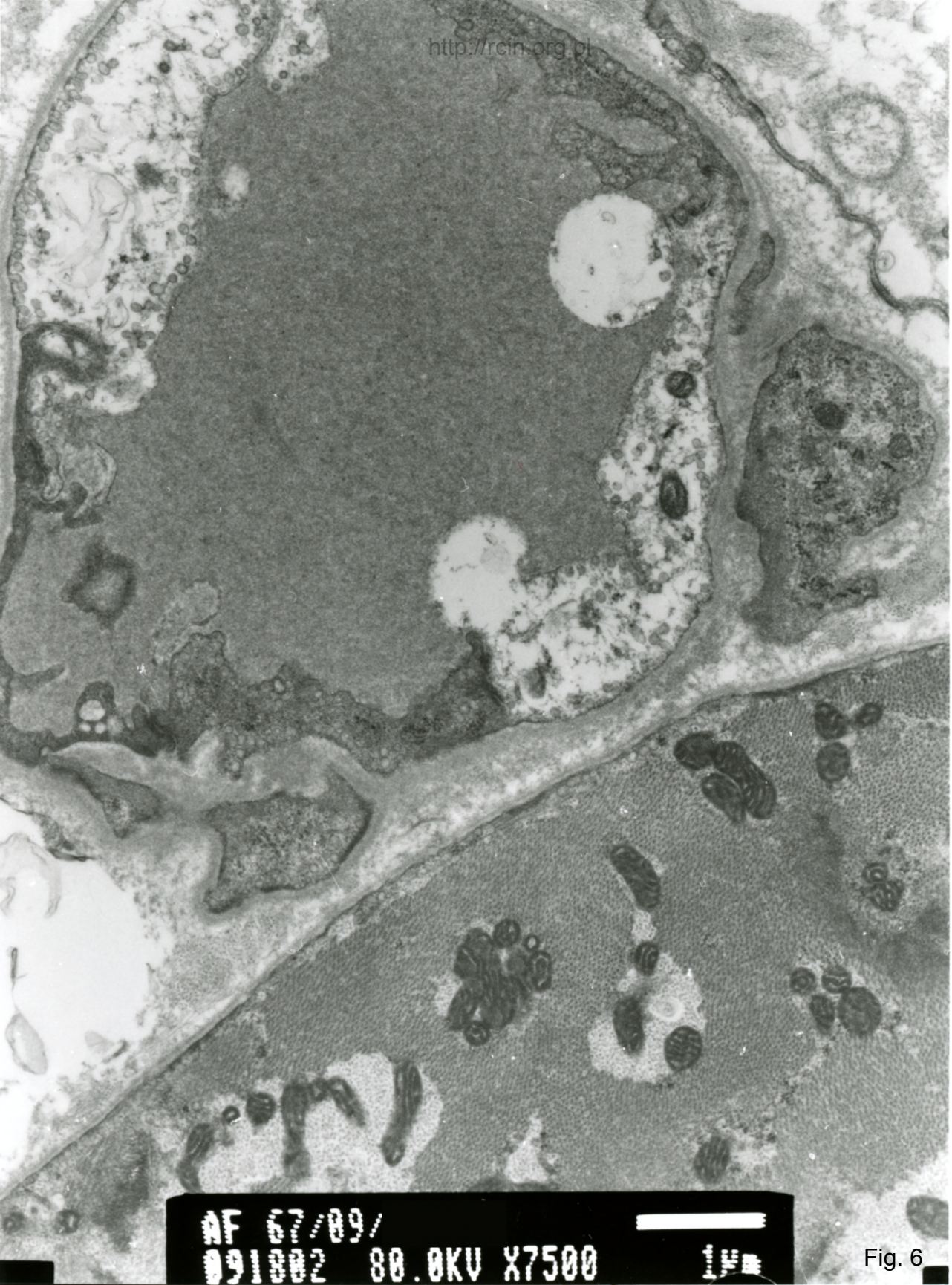


AF 07/09/
091012 80.0KV X4000



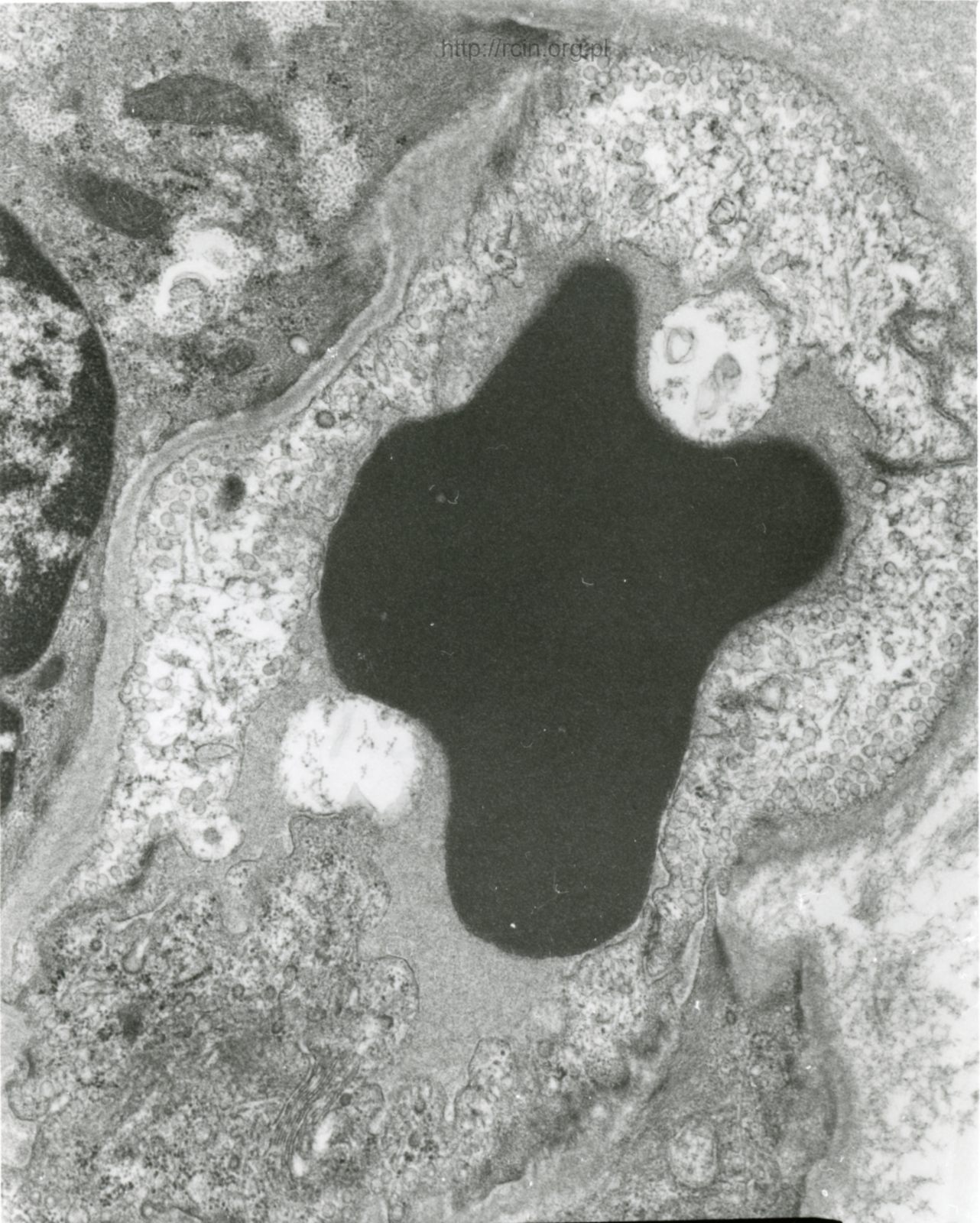
2µm

Fig. 5



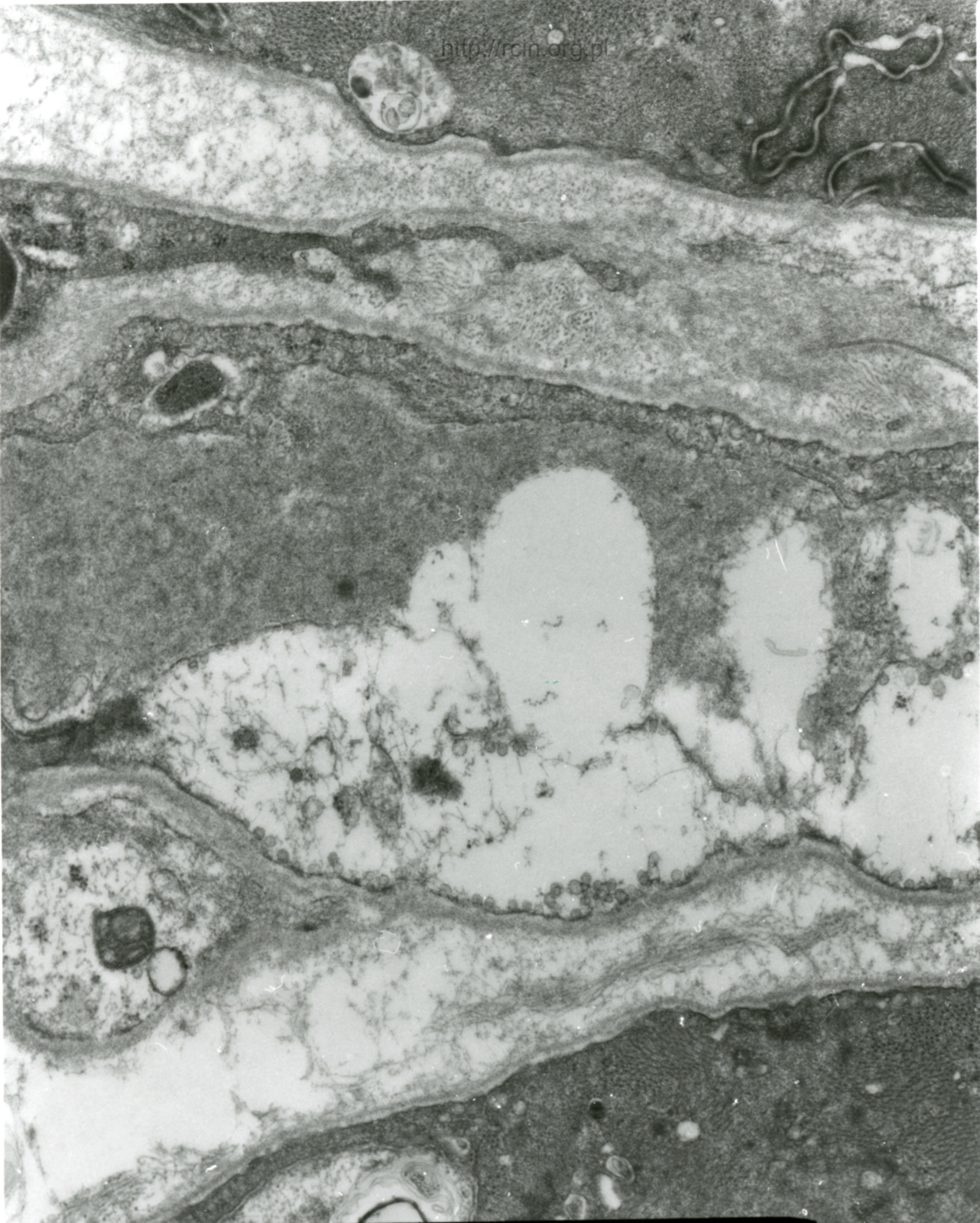
AF 67/89/
091802 80.0KV X7500 1µm

Fig. 6



AF 67/89/
091807 80.0KV X10K 500nm

Fig. 7



AF 67/09/
091003 80.0KV X10K 500nm

Fig. 8

67/09

1. 35

Niewydolność mięśnia sercowego

Analiza ultrastrukturalna wykazała dezorganizację sarkomerów (Fig. 1-5). W sarkoplazmie kardiomiocytów licznie występowały mitochondria o ciemnej elektronowo macierzy. W przestrzeni zewnątrzkomórkowej obecne były naczynia włosowate, których cechą charakterystyczną był nekrotyczny śródbłonek (Fig. 6-8).

Heart failure

Ultrastructural analysis revealed sarcomere disorganization (Figs. 1-5). Mitochondria with dark mitochondrial matrix were abundant in the sarcoplasm of cardiomyocytes. In the extracellular space, capillaries characterized by a necrotic endothelium were present (Figs. 6-8).