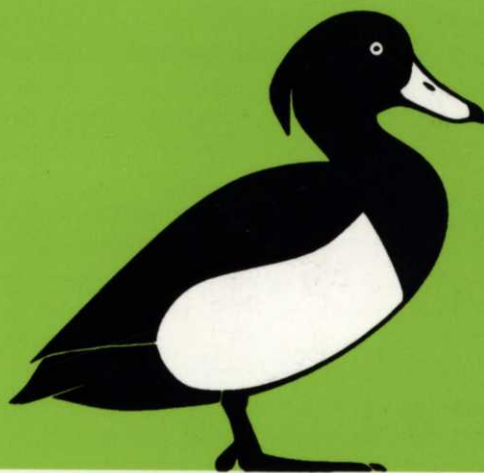


ACTA
ORNITHOLOGICA

Vol. 36 No 2
Winter 2001



**MUSEUM AND INSTITUTE OF ZOOLOGY
POLISH ACADEMY OF SCIENCES • WARSZAWA**

ACTA ORNITHOLOGICA (<http://www.pan.pl/miiz>)

— **Publishes** scientific papers (original research reports, reviews, short notes, etc.) and announcements from all fields of ornithology. It is open for authors from all countries. The language of papers is English (with Polish summary). All manuscripts are peer-reviewed.

— **Founded in 1933** as Acta Ornithologica Musei Zoologici Polonici, since 1953 continued under the present title. Published now in two issues per year.

— **Distributed** in 600-800 copies. Exchanged with over 250 scientific institutions in over 50 countries.

— **Indexed/abstracted** by: Polish Scientific Journal Contents (<http://ciuw.warman.net.pl/alf/psjc>), Biological Abstracts, Zoological Record, Ecological Abstracts, Wildlife Review Abstracts, Ornithologische Schriftenschau, Pascal — Zoologie, Referativnyi Zhurnal, Recent Ornithological Literature - website bases of Auk, Emu and Ibis.

PUBLISHER and © copyright

Museum & Institute of Zoology [Muzeum i Instytut Zoologii PAN]

Wilcza 64, PL-00-679 Warszawa, POLAND, e-mail: actaorn@miiz.waw.pl

tel. (48 22) 6293221, tel./fax -6296302

Bank account: PBK SA, XIII O/Warszawa, no 11101053-401050001016

EDITORS (address — see Publisher):

Maciej LUNIAK — Editor-in-chief

Tomasz D. MAZGAJSKI — Associate Editor

Wiesław NOWICKI, Łukasz REJT — Assistant Editors

Editorial Advisory Board

Jerzy BAŃBURA — University of Łódź, POLAND

Joerg BOEHNER — Technical University of Berlin, GERMANY

Dario CAPIZZI — University of Pisa, ITALY

Krzysztof DMOWSKI — University of Warsaw, POLAND

Andrzej ELŻANOWSKI — University of Wrocław, POLAND

Marcel M. LAMBRECHTS — Centre d'Ecologie Fonctionnelle et Evolutive, CNRS,
Montpellier, FRANCE

Nicolay S. MOROZOV — Institute of Ecology and Evolution, Russian Academy of
Sciences, Moscow, RUSSIA

Peter SENN — Gdańsk, POLAND

Wiesław WALANKIEWICZ — University of Podlasie, Siedlce, POLAND

Tomasz WESOŁOWSKI — University of Wrocław, POLAND

Cover design by Jerzy DESSELBERGER

INSTRUCTIONS TO AUTHORS — see the last page.

SUBSCRIPTION and orders for back issues see the form enclosed beside the last page.

[Prenumerata i zamówienia egz. archiwalnych patrz wszystkie przy ostatniej stronie]

ISSN 0001-6454

Printed in Poland

Skład komputerowy i druk — „Studio 1”

<http://rcin.org.pl>
BIBLIOTEKA

SUBSCRIPTION

Orders and information: Museum & Institute of Zoology in Warsaw (see Publisher and address overleaf).
Bank account: PBK SA, XIII O/Warszawa, no 11101053-401050001016

Prices (in 2002) include surface mail postage, for air mail add extra EU 5 (USD 4) per issue:
Individual - EU 35 (USD 30) per year (two issues), institutional - EU 75 (USD 65). Back and archival issues at discount prices.

Payment: by cheque, money order or by credit card. New subscribers and persons/institutions sending orders will receive an invoice.

Please fill in an order card below and mail it to the address overleaf



ORDER FORM

Enter my subscription of ACTA ORNITHOLOGICA beginning with volume:

- 35 (2000) - 36 (2001) - 37 (2002)

Send me back issues

Name/institution

Address

..... e-mail

I enclose a [cheque] [money order] for (currency, amount)

Charge my credit card: Visa MasterCard Eurocard AmericanExpress JCB

Card no Expiry date

Send me: an invoice a bill

Date

Signature

PRENUMERATA, ZESZYTY ARCHIWALNE

Zamówienia i informacje: Muzeum i Instytut Zoologii PAN (adres na odwrocie formularza „Zamówienia”)
tel. 22 6293221, tel./fax -6296302, e-mail: actaorn@miiz.waw.pl

Konto: PBK SA, XIII O/Warszawa, nr 11101053-401050001016

Koszt prenumeraty (ceny 2001 r.) - 40 zł rocznie (2 zeszyty), obejmuje wysyłkę krajową i jest niższy o marżę handlową naliczaną przez innych dystrybutorów. Zeszyty archiwalne - po obniżonej cenie.

Płatność: na w.w. konto Muzeum i Instytutu Zoologii PAN lub przekazem otrzymanym w odpowiedzi na zamówienie.



ZAMÓWIENIE

Zamawiam prenumeratę ACTA ORNITHOLOGICA począwszy od tomu:

- 35 (2000) - 36 (2001) - 37 (2002)

Zamawiam zeszyty z roczników archiwalnych:

Imię i nazwisko/ instytucja

Adres

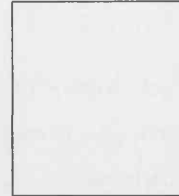
..... e-mail

Data

Podpis

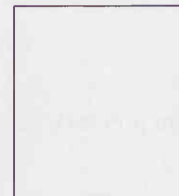
<http://rcin.org.pl>

✂



ACTA ORNITHOLOGICA
Museum & Institute of Zoology
Wilcza 64
PL-00-679 Warszawa
POLAND

✂



ACTA ORNITHOLOGICA
Muzeum i Instytut Zoologii PAN
ul. Wilcza 64
00-679 Warszawa

<http://rcin.org.pl>

INSTRUCTIONS TO AUTHORS

[Redakcja na życzenie wysyła polską wersję instrukcji]

ACTA ORNITHOLOGICA publishes papers (original research reports, reviews, short notes, etc.) that have not been published (or are not submitted) elsewhere. Manuscript, in English, should be supplied to the Editor in 3 complete copies. All papers submitted will be reviewed, prior to acceptance for publication. Authors are recommended to suggest possible reviewers, competent in the subject of the paper.

1. **The manuscript** should be double-spaced. No right justification, no paragraph indents, no underlines or any highlighting print (e.g. bold) should be used. Exceptions could be particular cases concerning data in tables. Headings should not be centered, and they should not end with full stop. Latin names of genera and species should be in *italics* (but not in parentheses), higher taxa – in normal font. English names of species should begin with capital letters. Their latin names should also be given with the first usage in the text. Words on the end of lines should not be split by hypens (even if the editor does it automatically). Footnotes may be used only on front page.

2. **Front page** should be arranged in the sequence: 1) the title, 2) author's full given names and the family name, 3) author's address, 4) abstract, 5) key words, 6) running title proposed.

3. **The title** of the paper should not be long. It should give a general information (e.g. problem or species studied) and particular identification (e.g. place, habitat, etc.).

4. **In postal address**, institutional affiliation of author(s) and name of the country should be in English. The e-mail address is recommended.

5. **Abstract** (up to 200 words) should not repeat information from the title. It should rather shortly inform about methods applied and main results, than list contents of the paper. It should be complete in itself without reference to other parts of the paper. It should use scientific latin names of the species if not mentioned in the title.

6. **The text** should be concise and formulated in short sentences. It should not repeat data presented in tables and illustrations. The results of the work, and the way in which they were obtained should be presented **in the past tense**, but regular or permanent situations (e.g. geographical location, general habits of the species) — **in present tense**. „Empty” phrases (e.g. „it should be noted that...”, „it is interesting that...”) should be avoided. Do not use long sentences in parentheses – comma or semicolon may be used in such cases.

7. **Dates** should be with the years given in full, their components separated by spaces — e.g. „3 Oct. 1999”, „3–5 May 1999”, „1990–1999”.

8. **Units** should be separated by space from numerical values – e.g. „3 p/10 ha”, „pp. 3–10”, „10 ind.”.

9. **Citations** of bibliography should be made with the author and year system — e.g. „reported by Taczanowski (1882)”, „(Taczanowski 1882)”, „(Dyrzc & Wink 1999)” — when two authors, „Dyrzc et al. 1984)” — when more than two authors. Multiple references should be given in chronological order of authors according to the years of their first publications cited — e.g. „(Rydzewski 1935, 1979a, 1979b; Czarnecki 1954, 1979)”. Papers „in press” may be cited, and listed in section „References” if they are formally accepted for print. Personal communications, works in preparation and unpublished data, should be cited in the text with author's initials (e.g. „inf. J. Kowalski”, „J. Kowalski unpublished data”). M.Sc. and Ph.D. theses may be cited as bibliography in „References”. Tables and figures should be cited in the text by their arabic numbers — e.g. „(Table 3)”, „(Tables 1 and 3, Fig. 3)”.

Continued overleaf

10. Tables and figures should be kept as simple as possible and understandable without reference to the text. They should be planned according to dimensions of the column or page (2 columns) in ACTA. Do not present the same data in both tables and illustrations (neither in the text!). Captions as short as possible, without footnotes. Comments and information concerning methods should be placed in the main text of the paper (not in tables or illustrations). Each table (with its heading) and all figure captions should be on separate sheets. **Tables should not have vertical lines.** Figures in computer graphics (see below) are preferred, or their quality should allow direct scanning, i.e. drawing should be contrast and bold, letters and other details large enough for reduction in printing. Colour illustrations need individual agreement of the Editor they are charged. The author is obliged to deliver copyright permission for tables or illustrations published elsewhere if they are to be reproduced in the same or similar form.

11. References to publications cited in the text (see „Citations“) should be listed (no indents and no right side justification!) in alphabetic order, according to the patterns below. Titles of journals should be abbreviated as in the World List of Scientific Periodicals, or full names should be used.

Journals: Dyrzc A., Tomiałojć L. 1974. Application of the mapping method in the marshland habitats. *Acta orn.* 14: 348–353.

Books: Cramp S., Simmons K. E. K. (eds.). 1983. *The birds of the Western Palearctic. Vol. II.* Oxford.

Chapters: Pinowski J., Zając R. 1990. Damages to crops caused by birds in Central Europe. In: Pinowski J., Summers-Smith J. D. (eds.). *Granivorous birds in the agricultural landscape.* Warszawa, pp. 333-347.

Titles of the works published in languages other than English, German or French (i.e. Polish, Russian, Spanish, etc.) should be given [in square brackets] – only in English translation. References written in non-latin script (e.g. Cyrillic) should be transcribed according to the international rules (ISO). The author is responsible for the accuracy of the references cited.

12. Summary will be translated, from English into Polish, by the Editor. Its volume should be limited to 1-3 pages. It should refer to the tables, figures and (if necessary) to the bibliography in the section „References“.

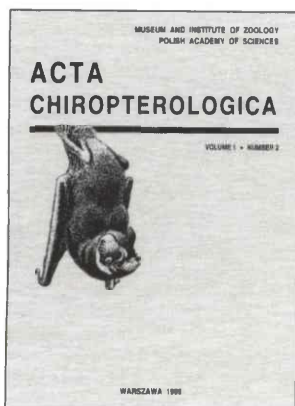
13. Computer record (IBM compatible format) of the manuscript should be submitted, together with one complete printed copy, when final form of the paper is accepted for publication, i.e., after corrections recommended by reviewers and the Editor. Word for Windows, Excel and Corel Draw are editors recommended. Graph files should be supplemented by the original data in ASCII format.

14. Galley proof will be delivered to the corresponding author and it should be returned to the Editor without delay, possibly by fax or by e-mail.

15. Reprints — 25 free copies will be provided to the corresponding author. More copies may be ordered at current prices when proof is returned.

16. Copyright (concerning all media) of the paper, or any substantial part of it, will be transferred to the Publisher on acceptance of the manuscript for publication.

**Other journals published by the Museum and Institute of Zoology,
Polish Academy of Sciences, Wilcza 64, 00-679 Warszawa, Poland
Tel.: (048) 22 629 3221, Fax: (048) 22 629 6302, <http://miiz.waw.pl>**

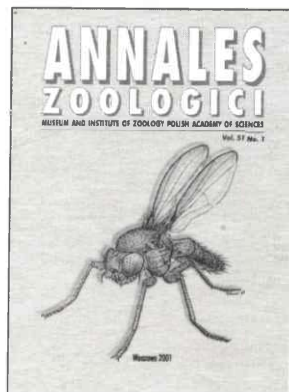


Acta Chiropterologica the only journal of bat research (ISSN 1508-1109) indexed by the Institute for Scientific Information, Philadelphia, USA. Publishes in English, twice a year. Containing reviews, full-length papers, short notes, opinions, technical comments, book reviews, short announcements, and advertisements. All manuscripts are peer-reviewed. Listed/abstracted in: Current Contents (Agric. Biol. & Environm. Sci.), Elsevier GEO Abstracts, Pascal, Polish Scientific Journals Contents (Agric. & Biol. Sci.), Referativnyi Zhurnal, Research Alert, Science Citation Index Expanded, Wildlife Review Abstracts, and Zoological Record. Annual subscription: institutional: USD 60, personal: USD 40.

E-mail: Acta.Chiropterologica@miiz.waw.pl

Annales Zoologici (ISSN 0003-4551) is published quarterly. It is an international journal devoted to all aspects of systematic zoology (in broad sense). All manuscripts are peer-reviewed. International editorial board. Listed/abstracted in: SciSearch® (Science Citation Index-Expanded), ISI Alerting Services (includes Research Alert®), and Current Contents®/Agriculture, Biology and Environmental Sciences; Entomological Abstracts and Zoological Record. Annual subscription: institutional: Europe USD 200, other countries USD 250; personal: Europe USD 100, other countries USD 125.

E-mail: darek@miiz.waw.pl



An International Journal of Faunology.

Issued since 1930, now as a semi-annual.

Publishes the results of original studies, review articles and syntheses devoted to knowing fauna, its differentiation, distribution and transformation. Peer-reviewed. Listed abstracted in: Zoological Record, Biological Abstracts, Biosis, Pascal, Referativnyj Zhurnal and Polish Scientific Journals Contents (Agric. & Biol. Sci.). Annual subscription: institutional: USD 60, personal: USD 40.

E-mail: jolawyt@miiz.waw.pl



The journals are available through the Library of the Museum and Institute of Zoology, PAS, Wilcza 64, 00-679 Warszawa,

Poland; E-mail: libr@miiz.waw.pl. Payments by Visa, MasterCard, Eurocard, Diners Club Intl., or American Express; checks payable to >Museum and Institute of Zoology PAS<; bank account PBK SA, XIII o/Warszawa, No. 11101053-401050001016

Acta Ornithologica 36 (2). Winter 2001

Contents [Spis treści]

- Breeding performance of the Common Buzzard *Buteo buteo* and Goshawk *Accipiter gentilis* in Central Poland [Parametry rozrodu jastrzębia i myszołowa zwyczajnego w okolicach Rogowa, Wysoczyzna Rawska] GOSZCZYŃSKI J. 105
- Breeding ecology of the Greenfinch *Carduelis chloris* in urban conditions (study in Krotoszyn, W Poland) [Ekologia lęgowa dzwońca w warunkach miejskich na przykładzie Krotoszyna] KOŚCIŃSKI Z. 111
- The ratio of amount of haemoglobin to total surface area of erythrocytes in birds in relation to body mass [Stosunek ilości hemoglobiny do sumarycznej powierzchni erytrocytów u ptaków, w zależności od ich masy ciała] KOSTELECKA-MYRCHA A., CHOŁOSTIAKOW-GROMEK J. 123
- Spatial and temporal relations between the Barred Warbler *Sylvia nisoria* and the Red-backed Shrike *Lanius collurio* in the Wielkopolska region (W Poland) [Zależności czasowe i przestrzenne pomiędzy jarzębatką i gąsiorkiem w Wielkopolsce] KUŹNIAK S., BEDNORZ J., TRYJANOWSKI P. 129
- Nesting of the House Martin *Delichon urbica* in the city of Poznań (1976-1978 and 1982-1989) [Gnieźdzenie się oknówki w Poznaniu (1976-1978 i 1982-1989)] PTASZYK J. 135
- The decline of the Bullfinch *Pyrrhula pyrrhula* in Britain: is the mechanism known? [Jaki jest mechanizm spadku populacji gila w Wielkiej Brytanii?] SIRIWARDENA G. M., FREEMAN S. N., CRICK H. Q. P. 143
- Barn Owl *Tyto alba* predation on small mammals in relation to the Mediterranean environment (Pisa Province, Italy) [Drapieżnictwo płomykówki w stosunku do drobnych ssaków w krajobrazie śródziemnomorskim] VARUZZA P., CAPIZZI D., SANTINI L., APOLLONIO M. 153

SHORT NOTES

- Bird community of inner La Plata City, Argentina [Zespół ptaków śródmieścia miasta La Plata, Argentyna] MONTALTI D., KOPIJ G. 161
- Feeding activity and seasonal changes in prey composition of urban Peregrine *Falco peregrinus* [Częstotliwość karmienia piskląt i sezonowe zmiany w składzie pokarmu sokołów wędrownych w Warszawie] REJT Ł. 165