



The first record of *Hahnia difficilis* Harm, 1966 (Araneae, Hahniidae) in Poland

Konrad WIŚNIEWSKI¹, Robert ROZWALKA² and Wanda WESOŁOWSKA¹

¹Department of Biodiversity and Evolutionary Taxonomy, University of Wrocław, Przybyszewskiego 63/77, 51-148 Wrocław, Poland; e-mails: konrad.wisniewski@uni.wroc.pl, tomwes@biol.uni.wroc.pl

²Department of Zoology, Maria Curie Skłodowska University, Akademicka 19, 20-033 Lublin, Poland; e-mail: arachnologia@wp.pl

Abstract: *Hahnia difficilis* was found in Orawa-Nowy Targ Basin (Podhale) and western Sudety Mountains, these are the first records of this spider species for Poland. Its distribution and typical habitats are discussed. Moreover, *Hahnia montana* – a species closely related to *H. difficilis* – is recorded from the Western Tatra Mountains and a few diagnostic features to distinguish these two species are given.

Key words: spiders, *Hahnia difficilis*, *H. montana*, peat bogs, mountains

INTRODUCTION

Hahnia C. L. Koch, 1841 is a large genus that comprises 102 species (Platnick 2013), 19 of them live in Europe (van Helsdingen 2013), seven have been recorded up to now in Poland (Kupryjanowicz 2008, Rozwałka & Stańska 2008). As the European species belonging to Hahniidae may be easily assigned to the generic level by consideration of a position of tracheal spiracle and eyes' size (Harm 1966, Almquist 2005, Nentwig et al. 2013), species recognition might be more problematic, especially when only males are available. The latest revision of European *Hahnia* species, with the description of a presently recorded species, has been done by Harm (1966), but there are still many problematic issues connected with systematics and distribution of this genus.

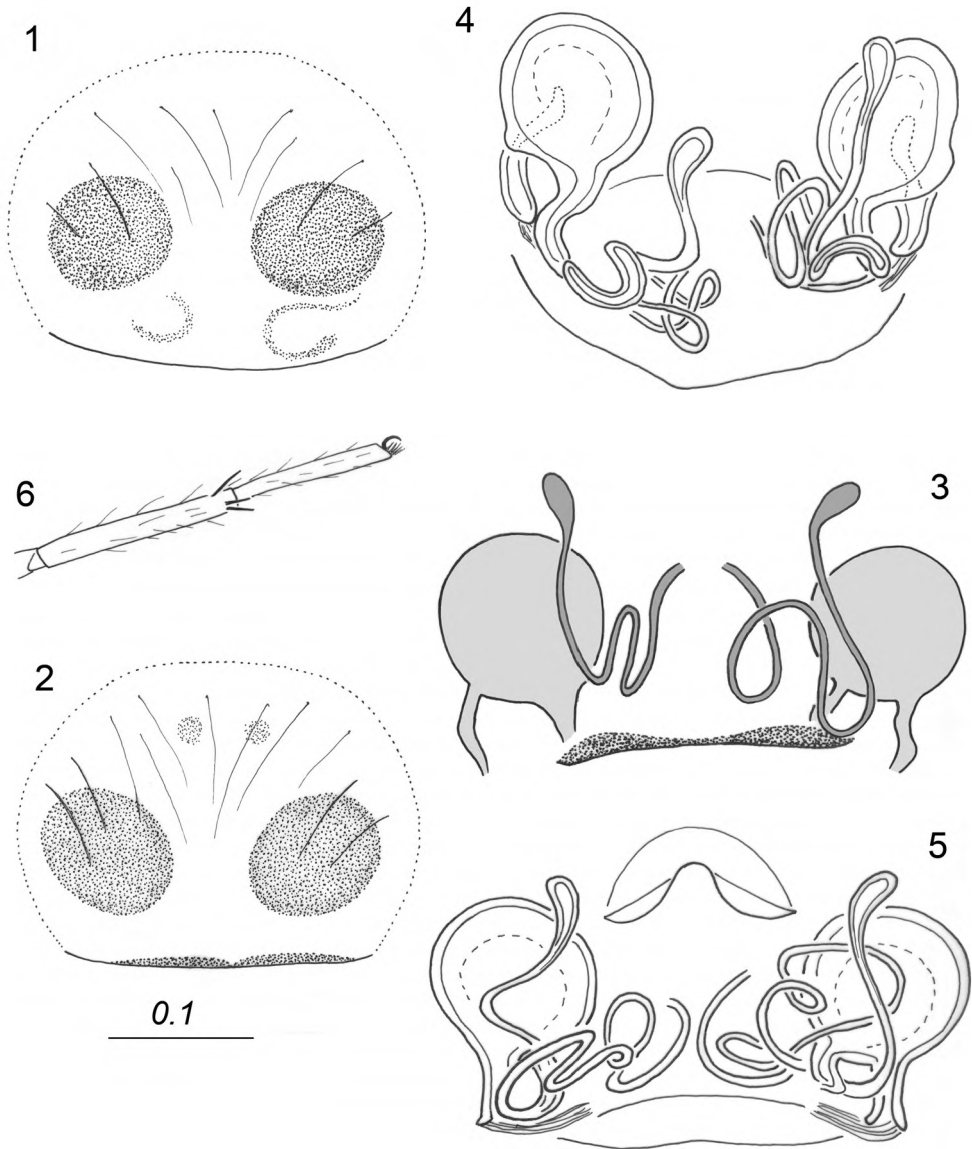
The paper presents the first record of *Hahnia difficilis* Harm, 1966 from Poland. This species was found on mountainous and sub-mountainous bogs.

SPECIES IDENTIFICATION

Female of *H. difficilis* (Fig. 15) is easily distinguished from congeners by the small, 'tentacle-shaped' secondary spermathecae. Copulatory openings are placed in the middle-anterior part of epigyne, copulatory ducts are thin, very long, primary spermathecae round and medium sized (Figs 1–6, 16).

However, recognizing males might prove to be more problematic, as they are similar to males of *Hahnia montana* (Blackwall, 1841) and – in smaller extent – to those of *Hahnia candida* Simon, 1875. Males of these species – so called *H. montana*-group, *sensu* Harm (1966) – have got roundish bulb, very thin and long embolus, hook-shaped tibial apophysis, sharp patellar apophysis that is directed posteriorly, as it may be seen by *H. difficilis* (Figs 7–9, 12–14). Recognizing males of *H. montana* (Fig. 19) and *H. difficilis* (Fig. 11) on basis of palpal structures is problematic. Harm (1966) recommends comparing femora of male palps

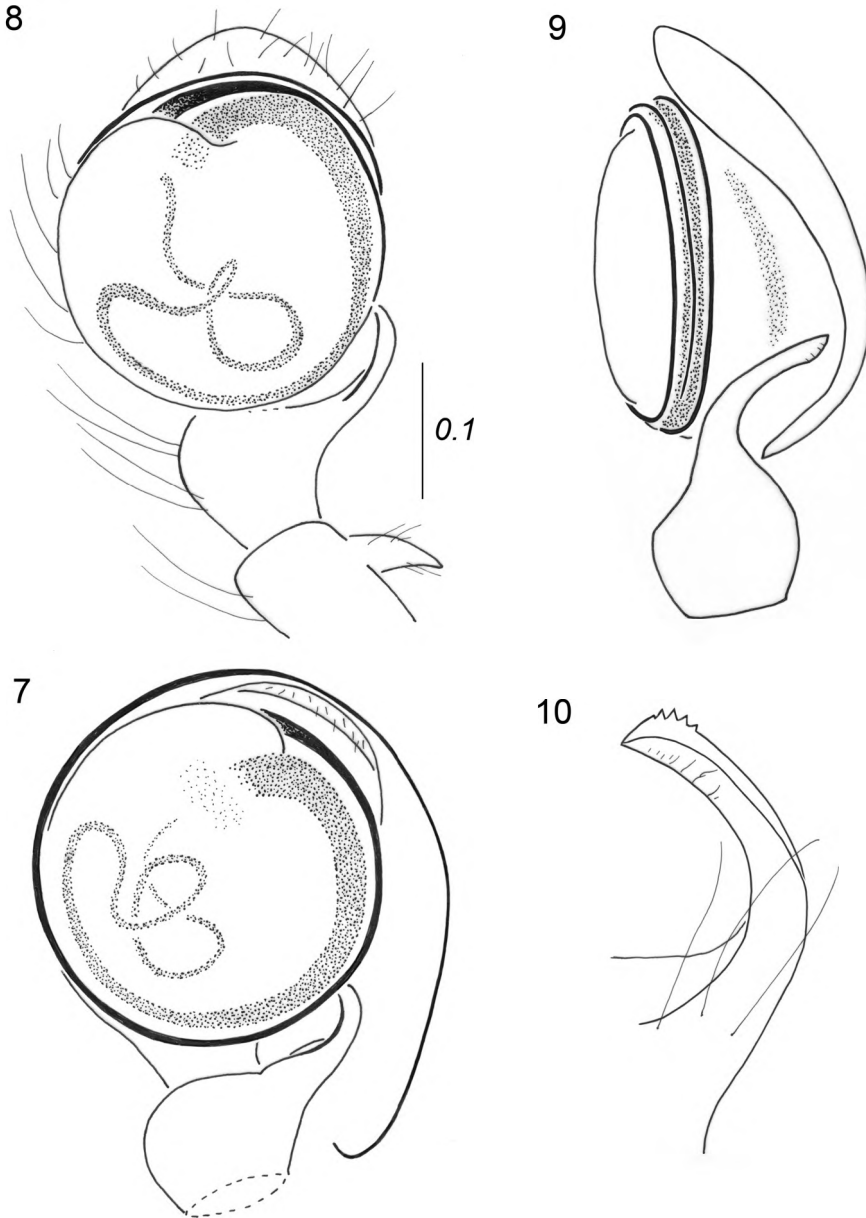
– *H. montana* has three deeply black spines on the ‘outer’ surface, while *H. difficilis* lacks this character. Even if these spines are broken, three large chaetopores are clearly visible.



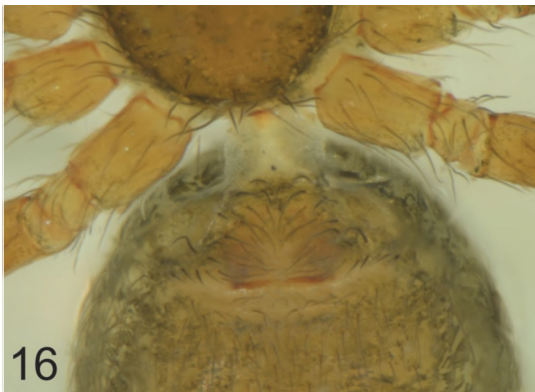
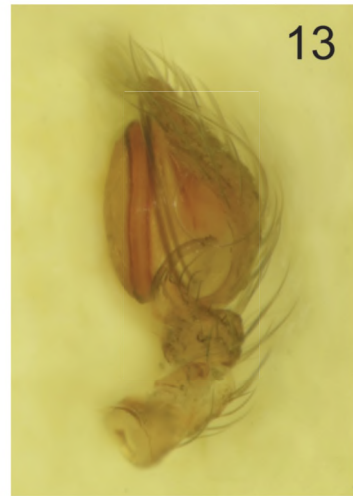
Figs 1–6. *Hahnia difficilis*, female: 1, 2 – epigyne, 3 – epigyne, dorsal view; 4, 5 – internal structure of epigyne (two specimens); 6 – distal segments of leg IV.

This seems to be the most reliable feature to tell apart these two species, however further differences can be listed: the bulb of *H. montana* is more convex than by *H. difficilis*; the embolus is longer in *H. difficilis* and encircles a bulb two and a half time (two times in *H. montana*); the arrangement of spermophore duct is other – in case of *H. montana* it begins in

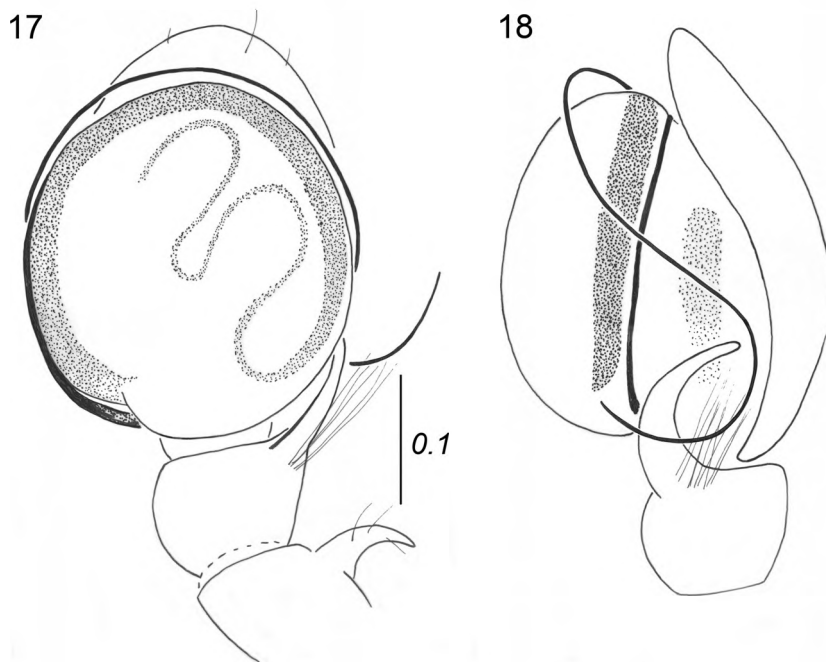
the posterior part of a bulb and its distal part is meandering, whereas in *H. difficilis* spermophore starts at the anterior part of a bulb and its distal part forms the crossing loops (compare Figs 7–9, 12–14 with Figs 17–18, 20–22). According to Miller (1971) *H. montana* has six small teeth on the tip of tibial apophysis, while in *H. difficilis* the number of such teeth is lower (4 to 5, as in Fig. 10).



Figs 7–10. *Hahnia difficilis*, male, palpal organ: 7, 8 – ventral view (two specimens); 9 – lateral view; 10 – tibial apophysis.



Figs 11–16. *Hahnia difficilis*: 11 – male, general appearance; 12 – palpal organ, ventral view; 13 – palpal organ, lateral view; 14 – palpal organ, dorsal view; 15 – female, general appearance; 16 – epigyne.



Figs 17–18. *Hahnia montana*, male, palpal organ: 17 – ventral view; 18 – lateral view.

THE RESULTS OF EXPLORATION

In total 34 specimens of *H. difficilis* were collected in southern Poland: Giant Mountains (Karkonosze), Isera Mountains (Góry Izerskie) and Orawa-Nowy Targ Basin (Kotlina Orawsko-Nowotarska). Spiders were collected by means of standard pitfall traps during the research of spiders’ assemblages on different mires (Table 1).

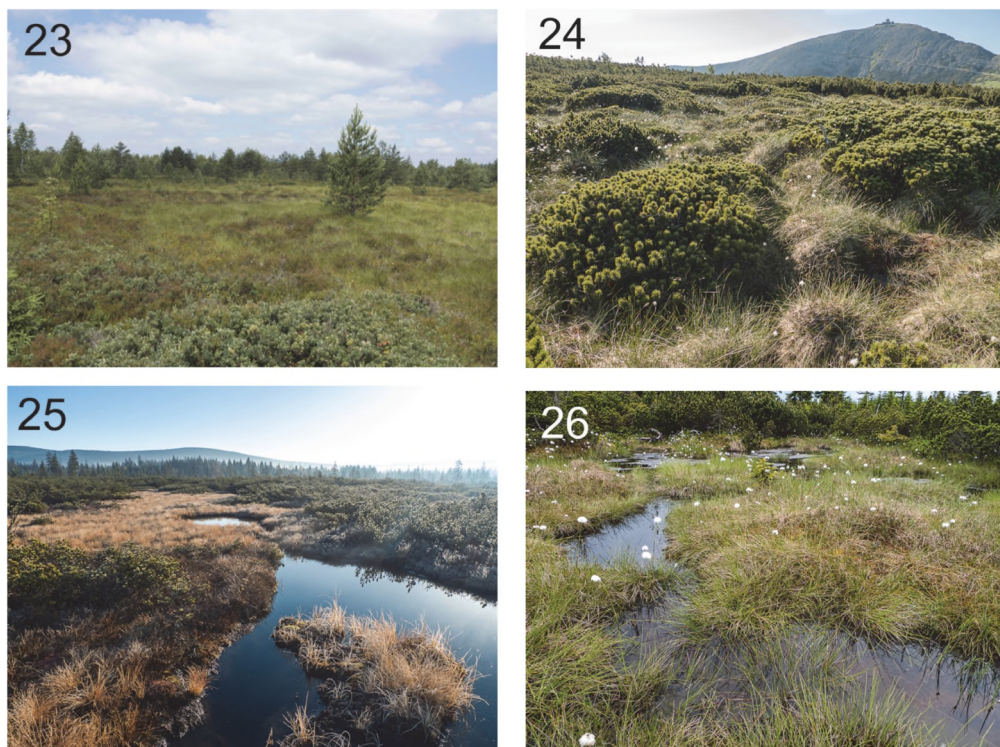
Table 1. Data on the studied material of *Hahnia difficilis*.

Region	Coordinates	UTM square	Altitude (m a.s.l.)	Exposure time of pitfall traps	N – ♂/♀
Orawa-Nowy Targ Basin (Puścizna Wielka/Piekielnik)	49°27'08" N 19°45'54" E	DV 17	657	4 Jun–28 Aug 2009 10 Sep–8 Oct 2009	5/2
Orawa-Nowy Targ Basin (Baligówka/Piekielnik)	49°27'58" N 19°48'38" E	DV 18	654	7 Jun–19 Jul 2008 29 Jul–13 Sep 2008 18 Oct–8 Nov 2008 29 Jul–13 Sep 2009	5/9
Orawa-Nowy Targ Basin (Pustać/Chyżne)	49°24'37" N 19°43'45" E	DV 07	693	14–28 Jul 2009	1/0
Karkonosze (Giant Mountains)	50°44'75" N 15°43'66" E	WS 52	1370	26 Jul–13 Aug 2010	1/0
Isera Valley	50°50'41" N 15°22'09" E	WS 23	835	4 Jul–10 Aug 2011 13 Jun–10 Aug 2012 29 Aug–23 Oct 2012	4/4
Slopes of Isera Mts	50°51'89" N 15°21'68" E	WS 23	915	2–23 Jul 2010 11–31 Aug 2010 18 Sept–18 Oct 2010	0/3



Figs 19–22. *Hahnia montana*: 19 – male, general appearance; 20 – palpal organ, ventral view; 21 – palpal organ, lateral view; 22 – palpal organ, dorsal view.

In Orawa-Nowy Targ region, *H. difficilis* was found on raised bogs, both on the apical part of their dome (Fig. 23) and near their margins, and in a pine bog forest. In Karkonosze this species was collected on a very small and highly isolated, subalpine peat bog that is partly overgrown by mountain pine (*Pinus mugo* Turra; Fig. 24). It was also trapped on a large peat bog, surrounded and overgrown by mountain pine in the Isera Valley (Fig. 25) and on a smaller one – a very similar peat bog, situated in a small saddle, within slopes of the Isera Mountains (Fig. 26).



Figs 23–26. Sampling areas: 23 – Baligówka, raised bog; 24 – Karkonosze Mountains, subalpine bog on Kopa; 25 – Isera Valley, peat bog; 26 – Isera Mountains, peat bog on a saddle among slopes of Isera Valley.

DISCUSSION

In the other studies, *H. difficilis* was recorded in fairly similar habitats. According to Harm (1966), it was found in the litter of coniferous and deciduous forests, among moss and on the mires. In the Tatra Mountains *H. difficilis* inhabited moss of forests (Svatoň 1983). It is also considered as a characteristic species for raised bogs (Buchar & Růžička 2002).

H. difficilis has been reported from nine European countries so far: Austria, Czech Republic, France, Germany, Italy, Liechtenstein, Romania, Slovakia, Switzerland (van Helsdingen 2013), so its known range is restricted only to central Europe, but it has not been recorded in Poland up to now. *H. difficilis* seems to inhabit solely mountainous areas.

The current checklist of Polish spiders (Rozwálka & Stańska 2008) contains seven *Hahnia* species (*candida* Simon, 1875; *helveola* Simon, 1875; *montana* (Blackwall, 1841); *nava* (Blackwall, 1841); *ononidum* Simon, 1875; *picta* Kulczyński, 1897; *pusilla* C.L. Koch, 1841).

Kulczyński (1882) described *Hahnia parva* (later synonymized with *H. montana*) from the Tatra Mountains, in the vicinity of Stawy Gąsienicowe. This record is based solely on a single male. Unfortunately, the type specimen was lost and the original description is insufficient to identify the species with certainty. It is highly plausible that Kulczyński collected the closely related *H. difficilis*, because the habitats are characteristic for this species (among moss, beneath mountain pine shrubs). The other records of *H. montana* in Poland come from Śnieżnik Kłodzki (Pax 1937) – so a long time before Harm's (1966) revision and the description of *H. difficilis* – and Orlickie Mountains (Woźny et al. 1988). The latter record is

based on a single male and cannot be verified. *H. montana* has been recently collected in the Western Tatra Mountains (Niski Uplaz, nearby Czerwony Żleb, 1650 m a.s.l., 49°13'37"N, 19°53'52"E, DV 15, 1♂, 3 Aug 2013, leg. R. Rozwalka). It was found among stones on a rocky slope with mountain pine. In previous studies *H. montana* was collected in leaf litter of different forests, in moss, among stones, in grasslands (Roberts 1993, Almquist 2005), but it was also found on peat bogs (Schikora 2003, Almquist 2005) and in the mountains: Tatra Mts (Gajdoš 1993, Svatoň & Kovalčík 2006) and Karkonosze Mts (Růžicka 2000). The problem of the distribution of *H. difficilis* and *H. montana* requires further research.

Hahnia candida is the other species that occurrence in Poland should be a matter of discussion. There have been four records of this species so far: in Karkonosze Mts (Dahl 1937, Pilawski 1962), Orlickie Mts. (Woźny et al. 1988) and Białowieża Forest (NE-Poland, Karpiński 1956). Despite subsequent intensive field studies in these areas (Starega & Kupryjanowicz 2001, Rozwalka unpub., Wiśniewski unpub.) it has never been found again. The material of *H. candida* from Poland is not available, the earlier records might have been misidentifications.

ACKNOWLEDGEMENTS

These studies were carried out with permissions of the Karkonosze National Park, the Ministry of Environment, Regional Directorate for Environmental Protection in Wrocław. We would like to thank Mr Włodzimierz Cichocki from the Muzeum Tatrzańskie for his help in collecting the part of the material.

REFERENCES

- ALMQUIST S. 2005. Swedish Araneae, part 1 – families Atypidae to Hahniidae (Linyphiidae excluded). Insect Systematics & Evolution, Supplement No. 62, 284 pp.
- BUCHAR J., RŮŽICKA V. 2002. Catalogue of spiders of the Czech Republic. Peres, Praha, 351 pp.
- DAHL M. 1937. Spinnentiere oder Arachnoidea, VIII. Familie: Hahniidae, Argyronetidae. Die Tierwelt Deutschlands 33. Teil. Gustav Fischer, Jena, pp. 100–114.
- GAJDOŠ P. 1993. Research of epigeic spider communities of high Mountain Valley in western Tatra (Jalovec Valley). Bollettino dell'Accademia Gioenia di Scienze Naturali, Catania 26: 145–163.
- HARM M. 1966. Die deutschen Hahniidae (Arach., Araneae). Senckenbergiana biologica 47: 345–370.
- HELSDINGEN P. J., van 2013. Araneae. In: Fauna Europaea Database (Version 2013.1). Available from <http://www.european-arachnology.org> (1 Oct 2013).
- KARPIŃSKI J. 1956. Pająki (Araneida) w biocenozie Białowieskiego Parku Narodowego [Spiders (Araneida) in the biocoenosis of the Białowieża National Park]. Roczniki Nauk Leśnych 14: 163–200.
- KULCZYŃSKI W. 1882. Opisy nowych gatunków pajaków z Tatr, Babiej góry i Karpat szlązkich [Descriptions of the new spider species from Tatra Mts., Babia Góra Mt. and Silesian Carpathian Mts.]. Pamiętniki Akademii Umiejętności w Krakowie. Wydział Matematyczno-Przyrodniczy 8: 1–42.
- KUPRYJANOWICZ J. 2008. Pająki, Araneae. In: BOGDANOWICZ W., CHUDZICKA E., PILIPIUK I. & SKIBIŃSKA E. (eds), Fauna of Poland. Characteristics and checklist of species, 3, pp. 223–239. Muzeum i Instytut Zoologii Polskiej Akademii Nauk, Warszawa, 603 pp.
- MILLER F. 1971. Řád Pavouci – Araneida [Order Spiders – Araneida]. In: DANIEL M., ČERNÝ V. (eds), Klíč zvěřeny ČSSR IV [Key to the fauna of Czechoslovakia IV], pp. 51–306. Akademie věd České republiky, Praha, 603 pp.
- NENTWIG W., BLICK T., GLOOR D., HÄNGGI A. & KROPF C. 2013. Spiders of Europe. Available from <http://www.araneae.unibe.ch> (Sep 2013).
- PAX F. 1937. Die Moorfauna des Glatzer Schneeberges. 2. Allgemeine Charakteristik der Hochmoore. Beiträge zur Biologie des Glatzer Schneeberges, Breslau, 3: 237–266.
- PILAWSKI S. 1962. Wstępne badania pajaków w Karkonoskim Parku Narodowym [Preliminary research of spiders in the Karkonosze National Park]. Acta Universitatis Wratislaviensis. Prace Zoologiczne 1: 181–188.
- PLATNICK N. I. 2013. The world spider catalog, version 14.0. American Museum of Natural History. Available from <http://research.amnh.org/iz/spiders/catalog> (1 Oct 2013).
- ROBERTS M. J. 1993. The spiders of Great Britain and Ireland. Harley Books. Vol. 1. Atypidae to Theridiosomatidae, 229 pp.
- ROZWALKA R. & STAŃSKA M. 2008. Check-list of spiders (Araneae) of Poland]. Available from <http://www.arachnologia.edu.pl>

- RŮŽIČKA V. 2000. Spiders (Araneae) of two valleys in the Krkonoše Mts. (Czech Republic). *Ekológia*, Bratislava 19, Supplement 3: 235–244.
- SCHIKORA H. B. 2003. Spinnen (Arachnida, Araneae) nord- und mitteleuropäischer Regenwassermoore entlang ökologischer und geographischer Gradienten. Verlag Mainz, Wissenschaftsverlag, Aachen, 567 pp.
- STARĘGA W. & KUPRYJANOWICZ J. 2001. Subclassis (podgromada): Araneae – pająki. Ordo (rząd): Araneomorpha. In: GUTOWSKI J. M., JAROSZEWICZ B. (eds), Catalogue of the fauna of Białowieża Primeval Forest, pp 55–63. Instytut Badawczy Leśnictwa, Warszawa, 403 pp. [In Polish]
- SVATOŇ J. 1983. Pavúky (Arachnida) centrálnej časti Vysokých Tatier [Spiders (Arachnida) in the central part of the High Tatra Mountains]. *Zborník prác o Tatranskom Národnom Parku* 24: 95–154.
- SVATOŇ J., KOVALČÍK R. 2006. Present state of knowledge of araneo-fauna in the Tatras National Park. *Oecologia Montana* 15: 1–14.
- WOŻNY M., CZAJKA M., PILAWSKI S., BEDNARZ S. 1988. Spiders (Aranei) of the polish Sudety Mountains. *Acta Universitatis Wratislaviensis* 972, *Prace Zoologiczne* 19: 53–130. [In Polish with English Summary]

STRESZCZENIE

[Pierwsze stwierdzenie *Hahnia difficilis* Harm, 1966 (Araneae, Hahniidae) w Polsce]

Hahnia difficilis Harm, 1966 (Hahniidae, Araneae) został znaleziony w Kotlinie Orawsko-Nowotarskiej, Karkonoszach i Górach Izerskich – są to pierwsze stwierdzenia tego gatunku w Polsce. Pająki zostały schwytane w pułapki Barbera, na torfowiskach wysokich. Samice *H. difficilis* są łatwo rozpoznawalne dzięki charakterystycznej budowie narządów płciowych, samce trudno odróżnić od blisko spokrewnionego gatunku – *H. montana*. Najprawdopodobniej gatunki te były często ze sobą mylone. W artykule wyszczególniono cechy, po których można odróżnić samce *H. difficilis* i *H. montana*, podano także nowe stwierdzenie *H. montana* z polskiej części Tatr.

Accepted: 2 December 2013