

# GENERA INSECTORUM

DIRIGÉS PAR

P. WYTSMAN

ORTHOPTERA

FAM. BLATTIDÆ

SUBFAM. NYCTIBORINÆ

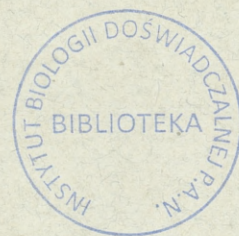
by R. SHELFORD

1908

PRIX : FR. 3.75

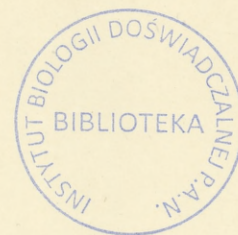
On souscrit chez M. P. Wytzman, Zoologiste, 43, rue Saint-Alphonse, à Bruxelles

Prospectus gratis et franco sur demande.



Bibli  
P. A.  
S. 17





# ORTHOPTERA

FAM. BLATTIDÆ

SUBFAM. NYCTIBORINÆ

WYKONANIE

WYKONANIE

# ORTHOPTERA

## FAM. BLATTIDÆ

### SUBFAM. NYCTIBORINÆ

by R. SHELFORD

WITH 1 COLOURED PLATE



THE Nyctiborinæ form the third division in the classification of the Blattidæ.

**Characters.** — Antennæ setaceous or plumose and incrassated. Head with the vertex exposed. Tegmina coriaceous and together with the pronotum generally covered with a fine silky pubescence, which in the larvæ extends over the whole body. Tegmina in all but one genus extending beyond the apex of the abdomen. Wings with anterior portion very large, costal veins somewhat irregular and ramose, ulnar vein multiramose, some of the rami incomplete and failing to reach the apex of the wing. Supra-anal lamina produced, triangular, its apex frequently incised slightly; sub-genital lamina of male narrow, slightly asymmetrical and with two styles, of female ample. Cerci long, pointed. Femora variously armed beneath; tarsi with large pulvilli and arolia (1). Ootheca large, flattened.

#### KEY TO THE GENERA

1. Tarsi with large pulvilli and arolia.
2. Tegmina and wings longer than the body.
3. Pronotum anteriorly parabolic, femora strongly armed. 1. GENUS NYCTIBORA, Burmeister.
- 3'. Pronotum transversely elliptic, femora sparsely armed.
4. Antennæ incrassated throughout the greater part of their length . . . . . 2. GENUS EUNYCTIBORA, nov. gen.

(1) In *Megaloblatta* however there is no arolium between the tarsal claws and the pulvilli are minute.

- 4'. *Apical half of antennæ setaceous* . . . . . 3. GENUS PARATROPES, Serville.  
 2'. *Tegmina truncate, short, wings minute* . . . . . 4. GENUS HEMINYCTOBORA, Saussure & Zehntner.  
 1'. *Tarsi with minute pulvilli and no arolia* . . . . . 5. GENUS MEGALOBLATTA, Dohrn.

## I. GENUS NYCTIBORA, BURMEISTER

**Nyctibora.** Burmeister, Handb. Ent. Vol. 2, p. 501 (1838).

**Nyctobora.** Saussure, Mém. Hist. Nat. Mexique, Blatt. p. 65 (1864).

**Characters.** — Antennæ setaceous, only slightly incrassated. Pronotum parabolic, posteriorly sub-truncate, sides deflexed. Tegmina with marginal area broad, near apex equal to half the total breadth of the tegmen. Wings rounded with anterior field broader than posterior, semi-corneous, ulnar vein with many rami. Femora strongly armed beneath. Pulvilli large, occupying the entire length of the second, third and fourth tarsal joints. Cerci long, pointed.

**Geographical distribution of species.** — Central and South America.

1. *N. limbata*, Thunberg, Mém. Acad. Sc. St. Pétersb. Vol. 10, p. 277 (1826) (Brazil). — **Plate, Fig. 5, 9.**  
*N. sericea*, Burmeister, Handb. Ent. Vol. 2, p. 501 (1838).  
*Blatta druryi*, Serville, Hist. Nat. Ins. Orth. p. 86 (1839).  
*N. terrestris*, Saussure, Rev. Zool. (2), Vol. 16, p. 315 (1864); Mém. Mexique, Blatt. p. 68 (1864).
2. *N. brunnea*, Thunberg, Mém. Acad. Sc. St. Pétersb. Vol. 10, p. 278 (1826) (Brazil).  
*N. holosericea*, Burmeister, Handb. Ent. Vol. 2, p. 502 (1838).  
*N. obscura*, Saussure, Rev. Zool. (2), Vol. 16, p. 316 (1864); Mém. Mexique, Blatt. p. 67, pl. 1, f. 9 (1864).
3. *N. tomentosa*, Serville, Hist. Nat. Ins. Orth. p. 86 (1839) (Surinam, Brazil).  
 ?*N. latipennis*, Burmeister, Handb. Ent. Vol. 2, p. 502 (1838).
4. *N. bohlsii*, Giglio-Tos, Boll. Mus. Zool. Univ. Torino, Vol. 12, n. 302, p. 7 (1897) (Paraguay).
5. *N. intermedia*, Saussure, Mém. Soc. Sc. Phys. Nat. Genève, Vol. 23, p. 105 (1873) (Brazil).
6. *N. humeralis*, Dohrn, Ent. Zeit. Stettin, Vol. 49, p. 129 (1888) (Upper Amazons).
7. *N. tenebrosa*, Walker, Cat. Blatt. Brit. Mus. p. 147 (1868) (Demerara).
8. *N. confusa*, Giglio-Tos, Boll. Mus. Zool. Univ. Torino, Vol. 12, n. 302, p. 7 (1897) (Paraguay).
9. *N. borellii*, Giglio-Tos, ibidem, p. 8 (1897) (Bolivia).
10. *N. glabra*, Giglio-Tos, ibidem, p. 9 (1897) (Bolivia).
11. *N. mexicana*, Saussure, Rev. Zool. Vol. 14, p. 227 (1862) (Mexico).
12. *N. azteca*, Saussure & Zehntner, Biol. Centr. Amer. Orth. Vol. 1, p. 56, pl. 4, f. 34 (1893) (Guatemala).  
 — **Plate, Fig. 2.**
13. *N. noctivaga*, Rehn, Trans. Amer. Ent. Soc. Vol. 29, p. 3 (1903) (Nicaragua).

### **Doubtful species :**

14. *N. lateralis*, Eschscholtz, Entomogr. p. 84 (1822).

## 2. GENUS EUNYCTIBORA, NOV. GEN.

**Characters.** — Similar to *Nyctibora*, Burmeister, but the antennæ strongly incrassated throughout the greater part of their length. Pronotum transversely elliptical, its posterior border as arcuate as, or more arcuate than, the anterior border. Sides not deflexed. Femora sparsely armed.

**Geographical distribution of species.** — South America.

1. *E. crassicornis*, Burmeister, Handb. Ent. Vol. 2, p. 501 (1838) (Brazil).  
*Blatta servillei*, Serville, Hist. Nat. Ins. Orth. p. 91 (1839).  
*Paratropes vestita*, Saussure, Rev. Zool. (2), Vol. 16, p. 308 (1864).
2. *E. omissa*, Brancsik, Jahresb. Ver. Trencsin. Comit. Vol. 24, p. 186, pl. 3, f. 1 (1901) (Argentina).
3. *E. bicolor*, Shelford, Ann. Mag. Nat. Hist. (7), Vol. 19, p. 36 (1907) (Peru).
4. *E. nigrocincta*, Shelford, ibidem, p. 37 (1907) (Colombia). — **Plate, Fig. 1.**

### 3. GENUS PARATROPES, SERVILLE

**Paratropes.** Serville, Hist. Nat. Ins. Orth. p. 117 (1839).

**Paratropa.** Brunner von Wattenwyl, Nouv. Syst. des Blatt. p. 148 (1865).

**Characters.** — Antennæ incrassated and plumose in basal half, the joints moniliform, apical half setaceous. Pronotum transversely elliptical, more arcuate posteriorly than anteriorly, sides not deflexed. Pronotum and tegmina with a sericeous pile. Tegmina pointed, almost lanceolate; marginal area at base more than half the total breadth of the tegmen. Wings pointed. Supra-anal lamina in both sexes produced, sub-triangular; sub-genital lamina of male narrow, asymmetrical with stout, flattened styles, of female large, ample, posteriorly sinuate. Cerci short, sub-spatulate. Femora very sparsely armed.

**Geographical distribution of species.** — Central and South America.

1. *P. elegans*, Burmeister, Handb. Ent. Vol. 2, p. 493 (1838) (Surinam, Upper Amazons).  
*P. bivitta*, Walker, Cat. Blatt. Brit. Mus. p. 150 (1868).  
*P. subsericeus*, Saussure, Rev. Zool. (2), Vol. 14, p. 229 (1862).
2. *P. lycoides*, Serville, Hist. Nat. Ins. Orth. p. 118 (1839) (Brazil).
3. *P. aequatorialis*, Saussure, Rev. Zool. (2), Vol. 16, p. 309 (1864); Miss. Sc. Mexique, Orth. p. 74 (1870) (Ecuador, Bolivia).  
*P. elegans*, Blanchard, in d'Orbigny, Voy. Amér. Mér. Vol. 6, p. 215, pl. 26, f. 4 (1846).  
*P. lycus*, ♀, Saussure, Rev. Zool. (2), Vol. 14, p. 229 (1862).  
*P. lanceolatus*, Walker, Cat. Blatt. Brit. Mus. p. 150 (1868).
4. *P. phalerata*, Erichson, in Schomburgk, Brit. Guiana, Vol. 3, p. 580 (1848) (Guiana, Brazil).— **Plate, Fig. 3, 4.**  
*P. lycus*, ♂, Saussure, Rev. Zool. (2), Vol. 14, p. 229 (1862).
5. *P. pica*, Walker, Cat. Blatt. Brit. Mus. p. 151 (1868) (Ega). — **Plate, Fig. 10.**
6. *P. mexicana*, Brunner von Wattenwyl, Nouv. Syst. des Blatt. p. 151, pl. 4, f. 15 (1865) (Mexico).  
*P. lycus*, var., Saussure, Rev. Zool. (2), Vol. 14, p. 229 (1862).
7. *P. bilunata*, Saussure & Zehntner, Biol. Centr. Amer. Orth. Vol. 1, p. 60 (1893) (Panama).
8. *P. biolleyi*, Saussure & Zehntner, ibidem, p. 60 (1893) (Costa Rica).

### 4. GENUS HEMINYCTOBORA, SAUSSURE & ZEHNTNER

**Heminyctobora.** Saussure & Zehntner, Biol. Centr. Amer. Orth. Vol. 1, p. 55 (1893).

**Characters.** — Allied to *Nyctibora*, Burmeister, but with the tegmina in both sexes truncate and corneous. Wings minute.

**Geographical distribution of species.** — Central America.

1. *H. truncata*, Saussure & Zehntner, Biol. Centr. Amer. Orth. Vol. 1, p. 56, pl. 4, f. 33 (1893) (Mexico, Guatemala). — **Plate, Fig. 8.**

### 5. GENUS MEGALOBLATTA, DOHRN

**Megaloblatta.** Dohrn, Ent. Zeit. Stettin, Vol. 48, p. 408 (1887); Saussure & Zehntner, Biol. Centr. Amer. Orth. Vol. 1, p. 56 (1893).

**Characters.** — Of large size. Antennæ setaceous. Pronotum elliptic, sides not deflexed. Tegmina and wings ample, marginal area of tegmina very broad. Supra-anal lamina produced, sub-quadrangle, sub-bilobate, sub-genital lamina of the male narrow, exceeded by the supra-anal lamina, furnished with two slender styles. Penultimate abdominal tergite strongly sinuate in the male, slightly

so in the female. Cerci elongate, pointed. Femora most sparsely armed beneath; pulvilli minute, arolia between tarsal joints absent.

**Geographical distribution of species.** — Central and South America.

1. *M. longipennis*, Walker, Cat. Blatt. Brit. Mus. p. 8 (1868) (Ecuador, Peru). — **Plate, Fig. 7.**  
*M. peruviana*, Dohrn, Ent. Zeit. Stettin, Vol. 48, p. 409 (1887).
2. *M. regina*, Saussure, Miss. Scient. Mexique, Orth. p. 116 (1870) (Brazil).
3. *M. blaberoides*, Walker, Cat. Derm. Salt. Brit. Mus. Vol. 5, Suppl. Blatt. p. 12 (1871) (Nicaragua, Panama). — **Plate, Fig. 6.**  
*M. rufipes*, Dohrn, Ent. Zeit. Stettin, Vol. 48, p. 409 (1887).

INDEX

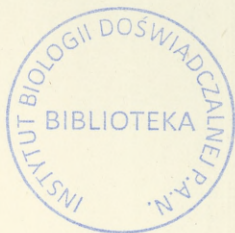
Pages.		Pages.		Pages.
aequatorialis, Sauss. ( <i>g. Paratropes</i> )	3	<b>Heminyctobora</b> (genus), Sauss.	obscura, Sauss. ( <i>g. Nyctibora</i> )	2
azteca, Sauss. ( <i>g. Nyctibora</i> )	2	& Zehnt.	omissa, Brancs. ( <i>g. Eunyctibora</i> )	2
bicolor, Shelf. ( <i>g. Eunyctibora</i> )	2	holosericea, Burm. ( <i>g. Nyctibora</i> )		
bilunata, Sauss. & Zehnt. ( <i>g. Paratropes</i> )	3	humeralis, Dohrn. ( <i>g. Nyctibora</i> )	<b>Paratropa</b> (genus), Brunn. v. W.	3
biolleyi, Sauss. & Zehnt. ( <i>g. Paratropes</i> )	3	intermedia, Sauss. ( <i>g. Nyctibora</i> )	<b>Paratropes</b> (genus), Serv.	3
bivitta, Walk. ( <i>g. Paratropes</i> )	3	lanceolatus, Walk. ( <i>g. Paratropes</i> )	peruviana, Dohrn ( <i>g. Megaloblatta</i> )	4
blaberoides, Walk. ( <i>g. Megaloblatta</i> )	4	lateralis, Esch. ( <i>g. Nyctibora</i> )	phalerata, Erichs. ( <i>g. Paratropes</i> )	3
bohlsii, Gig.-Tos. ( <i>g. Nyctibora</i> )	2	latipennis, Burm. ( <i>g. Nyctibora</i> )	pica, Walk. ( <i>g. Paratropes</i> )	3
borellii, Gig.-Tos. ( <i>g. Nyctibora</i> )	2	limbata, Thunb. ( <i>g. Nyctibora</i> )	regina, Sauss. ( <i>g. Megaloblatta</i> )	4
brunnea, Thunb. ( <i>g. Nyctibora</i> )	2	longipennis, Walk. ( <i>g. Megaloblatta</i> )	rufipes, Dohrn ( <i>g. Megaloblatta</i> )	4
confusa, Gig.-Tos. ( <i>g. Nyctibora</i> )	2	lycoides, Serv. ( <i>g. Paratropes</i> )	sericea, Burm. ( <i>g. Nyctibora</i> )	2
crassicornis, Burm. ( <i>g. Nyctibora</i> )	2	lycus, Sauss. ( <i>g. Paratropes</i> )	servillei, Serv. ( <i>g. Eunyctibora</i> )	2
druryi, Serv. ( <i>g. Nyctibora</i> )	2	<b>Megaloblatta</b> (genus), Dohrn	subsericeus, Sauss. ( <i>g. Paratropes</i> )	3
elegans, Blanch. ( <i>g. Paratropes</i> )	3	mexicana, Sauss. ( <i>g. Nyctibora</i> )	tenebrosa, Walk. ( <i>g. Nyctibora</i> )	2
elegans, Burm. ( <i>g. Paratropes</i> )	3	mexicana, Brunn. v. W. ( <i>g. Paratropes</i> )	terrestris, Sauss. ( <i>g. Nyctibora</i> )	2
<b>Eunyctibora</b> (genus), Shelf.	2	nigrocincta, Shelf. ( <i>g. Eunyctibora</i> )	tomentosa, Serv. ( <i>g. Nyctibora</i> )	2
glabra, Gig.-Tos. ( <i>g. Nyctibora</i> )	2	noctivaga, Rehn ( <i>g. Nyctibora</i> )	truncata, Sauss. & Zehnt. ( <i>g. Heminyctobora</i> )	3
		<b>Nyctibora</b> (genus), Burm.	vestita, Sauss. ( <i>g. Eunyctibora</i> )	2
		<b>Nyctobora</b> (genus), Sauss.		

EXPLANATION OF PLATE

- Fig. 1. *Eunyctibora nigrocincta*, Shelford.  
 — 2. *Nyctibora azteca*, Saussure & Zehntner.  
 — 3. *Paratropes phalerata*, Erichson. Apex of abdomen, ♂, from below.

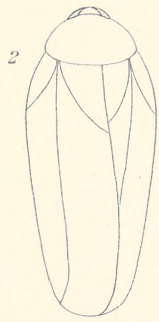


- Fig. 4. *Paratropes phalerata*, Erichson.  
— 5. *Nyctibora limbata*, Thunberg. Apex of abdomen, ♂, from below.  
— 6. *Megaloblatta blaberoides*, Walker. Apex of abdomen, ♂, from below.  
— 7. *Megaloblatta longipennis*, Walker.  
— 8. *Heminyctobora truncata*, Saussure & Zehntner.  
— 9. *Nyctibora limbata*, Thunberg.  
— 10. *Paratropes pica*, Walker.
- 

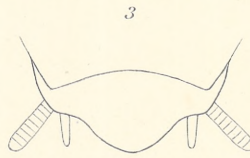


Oxford, May 15<sup>th</sup> 1908.





*Nyctibora azteca*



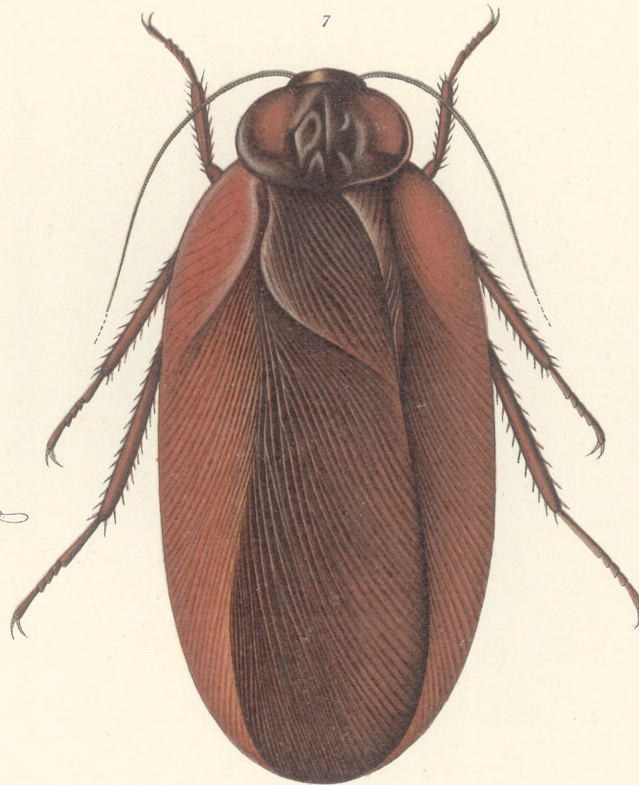
*Paratropes subsericea*



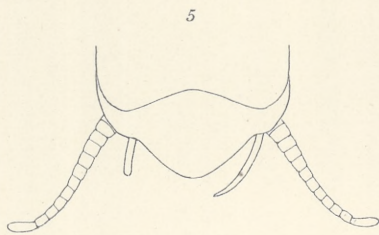
*Eunyctibora nigrocincta*



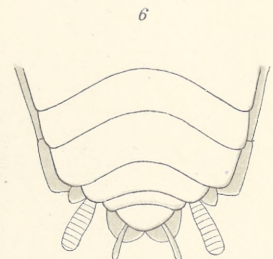
*Paratropes phalerata*



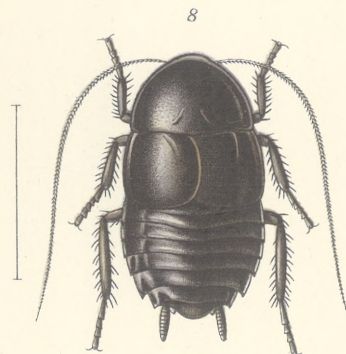
*Megaloblatta longipennis*  
(Natural size)



*Nyctibora limbata* ♂



*Megaloblatta blaberoides* ♂



*Heminyctobora truncata*



*Nyctibora limbata*



*Paratropes pica*

FAM. BLATTIDÆ

SUBFAM. NYCTIBORINÆ





