



# GENERA INSECTORUM

DIRIGÉS PAR

P. WYTSMAN

ORTHOPTERA

FAM. BLATTIDÆ

SUBFAM. PHYLLODROMIINÆ

by R. SHELFORD

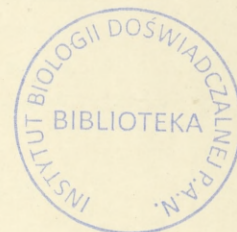
1908

PRIX : FR. 10.55

On souscrit chez M. P. Wytzman, Zoologiste, 43, rue Saint-Alphonse, à Bruxelles  
Prospectus gratis et franco sur demande.



FAM. BLATTIDÆ  
SUBFAM. ECTOBINÆ



ERRATA AND ADDENDA

An examination of a considerable number of types enables me to make the following corrections and additions in my list of the species of the Subfamily Ectobiinæ :

Genus **Ectobia**.

- delete *E. flavocincta*, Scudder [= *Ischnoptera pensylvanica*, De Geer].  
*E. africana*, Saussure, to be transferred to *Theganopteryx*.

Genus **Theganopteryx**.

- delete *T. punctulata*, Saussure & Zehntner [= *Phyllodromia*].  
add *T. circumcincta*, Reiche & Fairmaire, in Ferret & Galinier, Voy. Abyss. Vol. 3, p. 421, pl. 27, f. 3 (1847) (Abyssinia).  
add *T. pulchella*, Gerstäcker, Mitth. Ver. Vorpomm. Vol. 14, p. 61 (1883) (Cameroons).  
add *T. parilis*, Walker, Cat. Blatt. Brit. Mus. p. 110 (1865) (Hong-Kong).  
add? *T. sabauda*, Giglio-Tos, Boll. Mus. Zool. Univ. Torino, Vol. 22, n. 556, p. 2 (1907) (Uganda).

Genus **Hemithyrsocera**.

- H. nigra*, Brunner von Wattenwyl, is synonymous with *H. palliata*, Fabricius, Ent. Syst. Suppl. p. 186 (1798).

Genus **Escala**.

- add *Ischnoptera annulata*, Tepper, Trans. Roy. Soc. S. Australia, Vol. 17, p. 51 (1893) as a synonym of *Escala circumducta*, Walker.

Genus **Anaplecta**.

- delete *A. minutissima*, De Geer [= *Holocompsa*].  
add <sup>(1)</sup>*A. pumila*, Stål, Freg. Eugen. Resa, Ent. p. 309 (1858) (Brazil).  
add *A. abortiva*, Caudell, Bull. Mus. Brooklyn Inst. Vol. 1, p. 105 (1904) (Brownsville, U. S. A.).  
add *A. pulchella*, Rehn, Proc. Acad. Nat. Sc. Philad. p. 262 (1906) (Demerara).

Genus **Hololampra**.

- delete *H. madecassa*, Saussure [= *Ceratinoptera*].  
add *H. misella*, Stål, Oefv. Vet. Akad. Förh. Vol. 13, p. 166 (1856) (Natal).

GENUS PHORTICOLEA, BOLIVAR

**Phorticolea**. Bolivar, Mitt. Schweiz. Ent. Ges. Vol. 11, p. 138 (1905).

**Characters.** — Apterous, pubescent. Eyes small, remote. Antennæ with basal third incrassate, hirsute. Pronotum anteriorly rounded, almost covering vertex of head, posteriorly truncate. Penultimate

(1) Possibly conspecific with *A. lateralis*, Burmeister.

abdominal tergite in ♀ tumid in middle, posterior margin bisinuate, in ♂ posterior margin produced in the middle. Supra-anal lamina of ♀ transverse. Sub-genital lamina of ♂ small, provided with two styles. Femora compressed, front pair fimbriated beneath, posterior pair shortly spinose towards apex. Tibiæ very spinose. Tarsi elongate, arolium present between tarsal claws.

**Geographical distribution of species.** — Brazil.

1. *P. testacea*, Bolivar, Mitt. Schweiz. Ent. Ges. Vol. 2, p. 139 (1905) (Rio Grande do Sul, in ant's nests).

---

Oxford, May 15<sup>th</sup> 1908.

# ORTHOPTERA

FAM. BLATTIDÆ

SUBFAM. PHYLLODROMIINÆ



# ORTHOPTERA

## FAM. BLATTIDÆ

### SUBFAM. PHYLLODROMIINÆ

by R. SHELFORD

WITH I COLOURED AND I PLAIN PLATE

---



THE subfamily Phyllodromiinæ forms the second division of the family of Blattidæ.

**Characters.** — Antennæ setaceous or plumose. Head with the vertex more or less exposed. Scutellum sometimes exposed. Tegmina coriaceous or corneous, fully developed, reduced or scale-like. Wings fully developed, reduced or absent, costal veins generally numerous, regular, parallel, rarely with a small triangular apical field, never with a large folded and reflected apical area, ulnar vein with few exceptions ramose. Legs slender; femora generally strongly spined beneath, tarsi without pulvilli; an arolium nearly always present between the tarsal claws. Supra-anal lamina of both sexes of diverse shapes but typically produced and triangular; subgenital lamina of male with styles, one of which may be absent. Ootheca various in form, in some genera similar to that of the Ectobiinæ, in others coriaceous, carried by the female with the suture directed to one side and deposited only a few hours before the emergence of the larvæ.

This subfamily on account of the ill-defined genera and the enormous number of species presents more difficulties to the systematist than any other of the group. In the accompanying synoptical key to the genera I have ventured to introduce some modifications of the systems drawn up by previous authorities, but I have no great confidence in the permanency of my present views, nor any belief that the key is less artificial than its predecessors. The genus *Temnopteryx* cannot well be separated from the genus *Ceratinoptera* and I expect that eventually it will be found necessary to merge them. The genus *Phyllodromia* comprising more than 150 species is so unwieldy that its subdivision is a consummation devoutly to be hoped for, but such efforts as have been made are not successful and have led merely to the erection of more ill-defined and highly artificial genera; *Onychostylus*, *Desmosia*, *Mareta* are cases in point and the last I have merged in *Phyllodromia* seeing that it is founded on a character shewn by more

than one species in other genera of the subfamily. The genus *Nothoblatta* of Bolivar does not seem to be a Phyllodromine as suggested, for the femora are entirely unarmed beneath. Both *Ellipsoidion* and *Ischnoptera* grade into *Phyllodromia* in the most confusing manner. To add to the perplexities of the systematic worker in this group, the subfamily itself is not well-marked off from the Ectobiinæ. The characters presented by the wing-venation, the armature of the femora and the form of the supra-anal lamina are most untrustworthy guides on account of the protean variation that they exhibit. In a previous communication (Trans. Ent. Soc. Lond. p. 231, 1906) I expressed the view that the only crucial difference between the two subfamilies was the ramose ulnar vein of the wings in the Phyllodromiinae and the simple ulnar vein in the Ectobiinæ, but even this character is unreliable, for in *Ceratinoptera*, a characteristic Phyllodromiine genus, as shewn by the membranous ootheca of some species, the ulnar vein of the wing is simple. To put the matter briefly, this subfamily is full of interest for the evolutionist, but it is the despair of the systematist.

## KEY TO THE GENERA

1. *Eyes well-developed.*
2. *Eyes not joined on vertex of the head.*
3. *Genital styles of male not bifurcate at apex.*
4. *Arolia present between the tarsal claws.*
5. *Tegmina exceeding the apex of the abdomen, usually considerably so.*
6. *Ulnar veins of tegmina angulate. (Antennæ incrassated and plumose).*
  7. *Anterior ulnar vein of tegmina simple . . . . .* 1. GENUS PSEUDOMOPS, Serville.
  - 7'. *Anterior ulnar vein of tegmina biramose . . . . .* 2. GENUS PSEUDOTHYRSOCERA, Shelford.
- 6'. *Ulnar veins of tegmina not angled (1).*
  7. *Ulnar vein of wings sending branches to dividing vein.*
    8. *Antennæ incrassated and hirsute.*
      9. *Pronotum discoidal, mid- and hind-femora unarmed* 9. GENUS CALOBLATTA, Saussure.
      - 9'. *Pronotum trapezoidal, mid- and hind-femora armed* 10. GENUS PSEUDISCHNOPTERA, Saussure.
    - 8'. *Antennæ not incrassated nor hirsute.*
      9. *Femora strongly armed beneath . . . . .* 5. GENUS ISCHNOPTERA, Burmeister.
      - 9'. *Femora weakly armed beneath.*
        10. *Tegmina narrow, overlapping considerably . . . . .* 7. GENUS CHRASTOBLATTA, Saussure & [Zehntner.
        - 10'. *Tegmina broad, not overlapping considerably . . . . .* 8. GENUS PIROBLATTA, Shelford.
    - 7'. *Ulnar vein of wings not sending branches to dividing vein.*
      8. *Antennæ incrassated and hirsute.*
        9. *Tegmina corneous, their venation obscured . . . . .* 3. GENUS PACHNEPTERYX, Brunner von [Wattenwyl.
        - 9'. *Tegmina coriaceous, their venation not obscured . . . . .* 4. GENUS ELLIPSIDION, Saussure.
      - 8'. *Antennæ not incrassated nor hirsute.*
        9. *Head very broad.*
          10. *Anterior field of tegmina very broad . . . . .* 18. GENUS MACROPHYLLODROMIA, Saussure [& Zehntner.

(1) Except in a few species of *Ischnoptera*.



- 10'. *Anterior field of tegmina not broad* . . . . . 17. Genus PSEUDOPHYLLODROMIA, Brunner  
 9'. *Head not very broad.* [von Wattenwyl.]  
 10. *Maxillary palpi enormous* . . . . . 12. Genus DURYODANA, Kirby.  
 10'. *Maxillary palpi not large.*  
 11. *Convex insects.* . . . . . 16. Genus LIOSILPHA, Stål.  
 11'. *Depressed insects.*  
 12. *Apical triangle of wings prominent* . . . . . 15. Genus LUPPARIA, Walker.  
 12'. *Apical triangle of wings not prominent, or absent* 11. Genus PHYLLODROMIA, Serville.
5. *Tegmina if present not exceeding the apex of the abdomen.*  
 6. *Tegmina as long as, or shorter than the abdomen, not lobiform.*  
 7. *Tegmina very short, quadrate or obliquely truncate in both sexes* . . . . . 24. Genus TEMNOPTERYX, Brunner von  
 7'. *Tegmina of varying length, lanceolate in the male.* [Wattenwyl.]  
 8. *Ulnar vein simple.*  
 9. *Supra-anal lamina of male bilobed* . . . . . 23. Genus ANISOPYGIA, Saussure.  
 9'. *Supra-anal lamina not bilobed* . . . . . 21. Genus CERATINOPTERA, Brunner von  
 8'. *Ulnar vein ramose.* [Wattenwyl.]  
 9. *Supra-anal lamina rounded* . . . . . 19. Genus ALLACTA, Saussure & Zehntner.  
 9'. *Supra-anal lamina produced.* . . . . . 20. Genus ANALLACTA, nov. gen.
- 6'. *Tegmina lobiform or absent.*  
 7. *Tegmina lobiform* . . . . . 25. Genus LOBOPTERA, BrunnervonWatten-  
 7'. *Tegmina absent* . . . . . 27. Genus APTEROBLATTA, Shelford. [wyl.]
- 4'. *No arolia between the tarsal claws.*  
 5. *Tegmina lobiform* . . . . . 26. Genus PARALOBOPTERA, Saussure.  
 5'. *Tegmina not lobiform.*  
 6. *Ulnar vein of wings simple* . . . . . 22. Genus PARACERATINOPTERA, Saussure.  
 6'. *Ulnar vein of wings branched* . . . . . 6. Genus PARATEMNOPTERYX, Saussure.
- 3'. *Genital styles of male bifurcate at apex* . . . . . 14. Genus ONYCHOSTYLUS, Bolivar.  
 2'. *Eyes joined on vertex of the head* . . . . . 13. Genus DESMOSIA, Bolivar.  
 1'. *Eyes rudimentary.* . . . . . 28. Genus ATTAPHILA, Wheeler.

## I. GENUS PSEUDOMOPS, SERVILLE

**Pseudomops.** Serville, Ann. Sc. Nat. p. 41 (1831); Hist. Ins. Orth. p. 115 (1839).

**Thyrsocera.** Burmeister et auctores (in parte).

**Characters.** — Ocelli absent. Antennæ with basal half densely hirsute except in the male sex of some species. Pronotum with posterior border obtusely angled. Tegmina with the anterior ulnar vein simple, the branches of the posterior ulnar vein forming an angle with the main stem, longitudinal. Wings without a triangular apical field, veins stout, branches of the ulnar vein few. Supra-anal lamina triangular, emarginate. Openings of the odoriferous glands on the abdominal tergites in the male sex usually conspicuous. Cerci elongate, in some species spatulate. Sub-genital lamina of male with styles. Femora strongly armed beneath.

**Geographical distribution of species.** — Southern States of North America, Central America, South America.

**Species with non-spatulate cerci :**

1. *P. oblongata*, Linnæus, Syst. Nat. (ed. 10), Vol. 1, p. 425, n. 9 (1758) (Surinam).
2. *P. intercepta*, Burmeister, Handb. Ent. Vol. 2, p. 497, n. 10 (1838) (Central America, Honduras).  
*Thyrsocera tolteca*, Saussure, Rev. Zool. (2), Vol. 14, p. 168 (1862).
3. *P. inclusa*, Walker, Cat. Blatt. Brit. Mus. p. 212 (1868) (Brazil, Pernambuco).  
*Thyrsocera amoena*, Saussure, Mém. Soc. Sc. Phys. Nat. Genève, Vol. 23, p. 97 (1873).
4. *P. laticornis*, Perty, Del. Anim. Art. p. 117, pl. 23, f. 4 (1834) (Brazil).  
*Thyrsocera dubia*, Saussure, Rev. Zool. (2), Vol. 14, p. 168 (1862).  
*P. concinna*, Walker, Cat. Blatt. Brit. Mus. p. 82 (1868).
5. *P. annulicornis*, Burmeister, Handb. Ent. Vol. 2, p. 500, n. 9 (1838) (Brazil).  
*P. deceptura*, Walker, Cat. Blatt. Brit. Mus. p. 82 (1868).
6. *P. aaurantiaca*, Saussure & Zehntner, Biol. Centr. Amer. Orth. Vol. 1, p. 32, pl. 3, f. 6, 7 (1893) (Panama).
7. *P. grata*, Rehn, Trans. Amer. Ent. Soc. Vol. 29, p. 260 (1903) (Costa Rica).
8. *P. americana*, Saussure, Rev. Zool. (2), Vol. 21, p. 111 (1869) (Argentine).
9. *P. mimica*, Walker, Cat. Blatt. Brit. Mus. p. 80 (1868) (Brazil).
10. *P. cincta*, Burmeister, Handb. Ent. Vol. 2, p. 499, n. 3 (1838) (Central America, Texas).  
*Thyrsocera mexicana*, Saussure, Rev. Zool. (2), Vol. 14, p. 168 (1862).  
*Thyrsocera sallei*, Saussure, ibidem, p. 168 (1862).
11. *P. neglecta*, Shelford, Trans. Ent. Soc. Lond. p. 256 (1906) (Rio Grande do Sul, Brazil).
12. *P. affinis*, Burmeister, Handb. Ent. Vol. 2, p. 499, n. 4 (1838) (Surinam, Brazil).  
*Thyrsocera hirticornis*, Burmeister, ibidem, p. 499, n. 10 (1838).
13. *P. flavipes*, Burmeister, ibidem, p. 499, n. 5 (1838) (Brazil).
14. *P. discicollis*, Burmeister, ibidem, p. 1012 (1838) (Mexico).
15. *P. angusta*, Walker, Cat. Blatt. Brit. Mus. p. 81 (1868) (Santarem, Colombia). — **Plate I, Fig. 1.**
16. *P. burri*, Shelford, Trans. Ent. Soc. Lond. p. 257, pl. 14, f. 1 (1906) (Ecuador).
17. *P. magna*, Shelford, ibidem, p. 259 (1906) (Ecuador). — **Plate I, Fig. 2.**
18. *P. albostrigata*, Shelford, ibidem, p. 259 (1906) (Ecuador).
19. *P. bicolor*, Shelford, ibidem, p. 260, pl. 16, f. 12, pl. 14, f. 7 (1906) (Ecuador).
20. *P. gueriniiana*, Saussure, Rev. Zool. (2), Vol. 14, p. 168 (1862); Mém. Mexique, Blatt. p. 124 (1864). (Mexico).
21. *P. obscura*, Saussure, Mission Sc. Mexique, Orth. p. 52 (1870) (Bolivia).

**Species with spatulate cerci :**

22. *P. femoralis*, Walker, Cat. Blatt. Brit. Mus. p. 81 (1868) (Brazil).  
*Thyrsocera crinicornis*, Brunner von Wattenwyl, Nouv. Syst. des Blatt. p. 126 (1865).
23. *P. brunneri*, Saussure, Rev. Zool. (2), Vol. 21, p. 111 (1869) (Surinam).
24. *P. crinicornis*, Burmeister, Handb. Ent. Vol. 2, p. 499, n. 2 (1838) (Brazil).  
*P. affinis*, Walker, Cat. Blatt. Brit. Mus. p. 79 (1868).
25. *P. luctuosa*, Saussure, Rev. Zool. (2), Vol. 20, p. 99 (1868) (Surinam).
26. *P. tristicula*, Stål, Freg. Eugen. Resa, Ent. Vol. 5, p. 310 (1858) (Brazil).
27. *P. simulans*, Stål, ibidem, p. 310 (1858) (Brazil).
28. *P. nigrita*, Saussure, Rev. Zool. (2), Vol. 21, p. 111 (1869) (Brazil).
29. *P. puiggarii*, Bolivar, An. Soc. Esp. Hist. Nat. Vol. 10, p. 354 (1881) (Brazil).
30. *P. melana*, Walker, Cat. Blatt. Brit. Mus. p. 80 (1868) (Brazil).

**2. GENUS PSEUDOTHYRSOCERA, SHELFORD**

**Pseudothyrsocera.** Shelford, Trans. Ent. Soc. Lond. p. 250 (1906).

**Characters.** — Similar to *Pseudomops*, Serville, but with the anterior ulnar vein of the tegmina bifurcated instead of simple, the pronotum truncate posteriorly, and the antennæ generally incrassated and hirsute at the base in both sexes.

**Geographical distribution of species.** — Indo-Malayan Islands, Celebes and Philippines.

1. *P. scutigera*, Walker, Cat. Blatt. Brit. Mus. p. 212 (1868) (Borneo).
2. *P. pica*, Walker, ibidem, p. 213 (1868) (Singapore, Sumatra). — Plate I, Fig. 3.
3. *P. xanthophila*, Walker, ibidem, p. 230 (1868) (Celebes).
4. *P. montana*, Shelford, Trans. Ent. Soc. Lond. p. 251 (1906) (Borneo).
5. *P. ruficollis*, Shelford, ibidem, p. 251, pl. 14, f. 6 (1906) (Penang).
6. *P. lugubris*, Stål, Oefv. Vet.-Akad. Förh. Vol. 34 (10), p. 33 (1877) (Philippines).
7. *P. rufiventris*, Stål, ibidem, p. 33 (1877) (Philippines).  
*P. semicineta*, Stål, ibidem, p. 33 (♀) (1877).
8. *P. circumcincta*, Stål, ibidem, p. 33 (1877) (Philippines).  
*P. circumclusa*, Stål, ibidem, p. 34 (♀) (1877).
9. *P. signata*, Brunner von Wattenwyl, Nouv. Syst. des Blatt. p. 119 (1865) (Philippines).

**3. GENUS PACHNEPTERYX, BRUNNER VON WATTENWYL**

**Pachnepteryx.** Brunner von Wattenwyl, Nouv. Syst. des Blatt. p. 116 (1865).

**Characters.** — Allied to *Pseudothyrsocera*, Shelford. Antennæ hirsute at base in both sexes. Pronotum with posterior border truncate, exposing the scutellum. Tegmina acuminate, corneous, the venation indistinct or quite obscured. Wings without triangular apical field. Femora strongly armed beneath.

**Geographical distribution of species.** — Philippine Islands.

1. *P. pruinosa*, Brunner von Wattenwyl, Nouv. Syst. des Blatt. p. 117 (1865) (Philippines).
2. *P. ventralis*, Walker, Cat. Blatt. Brit. Mus. p. 85 (1868) (Philippines).
3. *P. pallidicollis*, Stål, Oefv. Vet.-Akad. Förh. Vol. 34 (10), p. 33 (1877) (Philippines).
4. *P. signaticollis*, Stål, ibidem, p. 33 (1877) (Philippines).

**4. GENUS ELLIPSIDION, SAUSSURE**

**Ellipsoidion.** Saussure, Mém. Soc. Sc. Phys. Nat. Genève, Vol. 17, p. 146 (1863).

**Apolyta.** Brunner von Wattenwyl, Nouv. Syst. des Blatt. p. 112 (1865).

**Characters.** — Antennæ long, basal two-thirds incrassated, hirsute. Pronotum transversely elliptical, anteriorly not covering the vertex of the head, posteriorly truncate, exposing the large scutellum. Tegmina semi-corneous with the branches of the posterior ulnar vein ramose, not angulate. Median vein of the wings with the apex furcate, no triangular apical field. Femora strongly armed beneath. Ootheca chitinous, carried by the female with the suture uppermost.

**Geographical distribution of species.** — Australia and New Guinea.

1. *E. variegatum*, Fabricius, Syst. Ent. p. 273, n. 13 (1775) (Australia).  
*? E. vestitum*, Burmeister, Handb. Ent. Vol. 2, p. 498, n. 11 (1838).
2. *E. australe*, Saussure, Mém. Soc. Sc. Phys. Nat. Genève, Vol. 17, p. 146, pl. 1, f. 11 (1863) (Australia).  
*E. pellucidum*, Brunner von Wattenwyl, Nouv. Syst. des Blatt. p. 114, n. 2, pl. 3, f. 10 (1865).  
*E. placens*, Walker, Cat. Derm. Salt. Brit. Mus. Vol. 5, Suppl. Blatt. p. 29 (1871) (larva).
3. *E. aurantium*, Saussure, Rev. Zool. (2), Vol. 16, p. 312 (1864) (Australia).
4. *E. reticulatum*, Saussure, ibidem, p. 312 (1864) (Australia).
5. *E. gracile*, Butler, Cist. Ent. Vol. 1, p. 294 (1874) (Rockhampton, Australia).
6. *E. femoratum*, Brunner von Wattenwyl, Nouv. Syst. des Blatt. p. 101 (1865) (Sydney, Australia).
7. *E. quadripunctatum*, Tepper, Trans. Roy. Soc. S. Austral. Vol. 17, p. 45 (1893) (Adelaide, Australia).

8. *E. humerale*, Tepper, Trans. Roy. Soc. S. Austral. Vol. 17, p. 46 (1893) (Australia).
9. *E. decoratum*, Tepper, ibidem, p. 46 (1893) (Australia).
10. *E. bicolor*, Tepper, ibidem, Vol. 19, p. 152 (1895) (Cape York, Australia).
11. *E. testaceum*, Tepper, Horn Exped. Centr. Austr. Pt. 2, p. 358 (1896) (Central Australia).
12. *E. litura*, Tepper, ibidem, p. 359 (1896) (Central Australia).
13. *E. albovittatum*, Saussure, Mém. Soc. Sc. Phys. Nat. Genève, Vol. 23, p. 95 (1873) (Australia).
14. *E. histrionicum*, Rehn, Proc. U. S. Nat. Mus. Vol. 27, p. 544 (1904) (Australia).
15. *E. castaneum*, Shelford, Ann. Mag. Nat. Hist. (7), Vol. 19, p. 28 (1907) (New Guinea). — **Plate I, Fig. 6.**

**Doubtful species :**

16. *E. marginiferum*, Walker, Cat. Blatt. Brit. Mus. p. 107 (1868) (Australia).
17. *E. depressum*, Walker, Cat. Derm. Salt. Brit. Mus. Vol. 5, Suppl. Blatt. p. 28 (1871) (Australia).
18. *E. ramosum*, Walker, ibidem, p. 29 (1871) (Australia).

## 5. GENUS ISCHNOPTERA, BURMEISTER

**Ischnoptera.** Burmeister, Handb. Ent. Vol. 2, p. 500 (1838).

**Platamodes.** Scudder, Boston Journ. Nat. Hist. Vol. 7, p. 417 (1862).

**Characters.** — Antennæ much longer than the body, not incrassated, nor hirsute. Pronotum typically trapezoidal, sides deflexed, anteriorly not quite covering vertex of head. Tegmina and wings reduced in the females of some species, in the males always longer than the body. Wings with the ulnar vein sending some branches towards the dividing vein and others towards the apex of the wing. Subgenital lamina of the male frequently asymmetrical and provided with one or with two styles. Cerci elongate. Legs long, slender; femora strongly spinose. Ootheca, where known, coriaceous in texture and carried by the female with the suture directed to one side.

**Geographical distribution of species.** — All the regions of the world, except the Palæarctic.

**a. Ethiopian species :**

1. *I. cinnamomea*, Gerstäcker, Mitth. Ver. Vorpomm. Vol. 14, p. 62 (1883) (Cameroons).  
*I. basalis*, Gerstäcker, ibidem, p. 63 (1883).
2. *I. punctifrons*, Gerstäcker, ibidem, p. 63 (1883) (Cameroons).  
*I. aegrota*, Gerstäcker, ibidem, p. 64 (1883).
3. *I. relucens*, Gerstäcker, ibidem, p. 65 (1883) (Ogowe).
4. *I. bocagii*, Bolivar, Journ. Sc. Acad. Lisboa, Vol. 8, p. 107 (1881) (Angola).
5. *I. strigosa*, Schaum, Peters Reise Mossamb. Zool. Vol. 5, p. 108 (1862) (Mozambique).
6. *I. neutra*, Saussure, Abh. Senckenb. Ges. Frankfurt, Vol. 21, p. 571 (1899) (East Africa).
7. *I. incuriosa*, Saussure, ibidem, p. 571 (1899) (East Africa).
8. *I. bimaculata*, Gerstäcker, Arch. f. Naturg. Vol. 35, p. 206 (1869) (East Africa). — **Plate I, Fig. 5.**
9. *I. picea*, Schulthess, Ann. Mus. Stor. Nat. Genova, Vol. 39, p. 166 (1898) (Somaliland).
10. *I. natalensis*, Walker, Cat. Blatt. Brit. Mus. p. 117 (1868) (Natal). — **Plate I, Fig. 4.**
11. *I. jallae*, Giglio-Tos, Boll. Mus. Zool. Univ. Torino, Vol. 22, n. 563, p. 2 (1907) (Upper Zambesi).
12. *I. longstaffi*, Shelford, Ann. Mag. Nat. Hist. (8), Vol. 1, p. 157, pl. 9, f. 8 (1908) (Zambesi).
13. *I. malagassa*, Saussure & Zehntner, in Grandidier, Hist. Nat. Madag. Orth. Vol. 1, p. 18, pl. 6, f. 66 (1895) (Madagascar).
14. *I. sikorae*, Saussure, Soc. Ent. Zürich, Vol. 6, p. 25 (1891) (Madagascar).

**b. Oriental species :**

15. *I. ruficollis*, Fabricius, Ent. Syst. Vol. 2, p. 10 (1793) (India).
16. *I. continua*, Walker, Cat. Derm. Salt. Brit. Mus. Vol. 5, Suppl. Blatt. p. 22 (1871) (Bombay).

17. *I. brevipes*, Walker, Cat. Derm. Salt. Brit. Mus. Vol. 5, Suppl. Blatt. p. 22 (1871) (Bombay).
18. *I. arcta*, Brunner von Wattenwyl, Nouv. Syst. des Blatt. p. 132 (1865) (Ceylon).
19. *I. procerata*, Brunner von Wattenwyl, ibidem (1865) (Ceylon).
20. *I. biligata*, Walker, Cat. Blatt. Brit. Mus. p. 123 (1868) (Ceylon).
21. *I. himalayica*, Brunner von Wattenwyl, Nouv. Syst. des Blatt. p. 129 (1865) (Himalayas).
22. *I. ectobioides*, Saussure, Mém. Soc. Sc. Phys. Nat. Genève, Vol. 23, p. 104 (1873) (S. China).
23. *I. multiramosa*, Brunner von Wattenwyl, Ann. Mus. Stor. Nat. Genova, Vol. 33, p. 23, pl. 1, f. 8 (1893) (Burma).
24. *I. fusca*, Brunner von Wattenwyl, ibidem, p. 24 (1893) (Burma).
25. *I. modesta*, Brunner von Wattenwyl, ibidem, p. 24 (1893) (Burma).
26. *I. indica*, Brunner von Wattenwyl, Nouv. Syst. des Blatt. p. 130 (1865) (Malacca).
27. *I. reversa*, Walker, Cat. Blatt. Brit. Mus. Suppl. p. 147 (1869) (Singapore).
28. *I. ridleyi*, Shelford, Ann. Mag. Nat. Hist. (7), Vol. 19, p. 26 (1907) (Singapore).
29. *I. cavernicola*, Shelford, ibidem, p. 27 (1907) (Borneo).
30. *I. excavata*, Shelford, Trans. Ent. Soc. Lond. p. 265, pl. 16, f. 11 (1906) (Borneo).
31. *I. montis*, Shelford, ibidem, p. 266, pl. 16, f. 10 (1907) (Borneo).
32. *I. flavicollis*, Serville, Hist. Ins. Orth. p. 69 (1839) (Java).
33. *I. perpulchra*, Shelford, Ann. Mag. Nat. Hist. (7), Vol. 19, p. 27 (1907) (Celebes).
34. *I. ramosa*, Saussure, Mém. Soc. Sc. Phys. Nat. Genève, Vol. 20, p. 254 (1869) (E. Indies).

**c. Australian species :**

35. *I. australis*, Saussure, Mém. Soc. Sc. Phys. Nat. Genève, Vol. 17, p. 155, pl. 1, f. 17 (1863) (Australia).
36. *I. fulva*, Saussure, ibidem, p. 156, pl. 1, f. 18 (1863) (Australia).
37. *I. australiae*, Brunner von Wattenwyl, Nouv. Syst. des Blatt. p. 95 (1865) (New South Wales).
38. *I. termitina*, Saussure, Mém. Soc. Sc. Phys. Nat. Genève, Vol. 17, p. 157, pl. 1, f. 19 (1863) (Australia).
39. *I. triramosa*, Saussure, ibidem, Vol. 20, p. 252, (1869) (Australia).
40. *I. centralis*, Walker, Cat. Blatt. Brit. Mus. p. 120 (1868) (South Australia).
41. *I. anastomosa*, Tepper, Trans. Roy. Soc. S. Austral. Vol. 17, p. 53 (1893) (South Australia).
42. *I. contraria*, Tepper, ibidem, p. 54 (1893) (South Australia).
43. *I. manicata*, Tepper, ibidem, p. 53 (1893) (South Australia).
44. *I. obscura*, Tepper, ibidem, p. 54 (1893) (Australia).
45. *I. parallela*, Tepper, ibidem, p. 53 (1893) (Australia).
46. *I. brunneonigra*, Tepper, ibidem, Vol. 19, p. 155 (1895) (Victoria).

**d. Nearctic species :**

47. *I. pensylvanica*, De Geer, Mém. Ins. Vol. 3, p. 537, pl. 44, f. 4 (1773) (United States).  
*I. nortoniana*, Saussure, Rev. Zool. (2), Vol. 14, p. 169 (1862).  
*Ectobia flavocincta* (1), Scudder, Journ. Boston Soc. Nat. Hist. Vol. 7, p. 419 (1862).  
*Blatta borealis*, Saussure, ibidem, p. 166 (1862).
48. *I. uhleriana*, Saussure, Rev. Zool. (2), Vol. 14, p. 169 (1862) (United States).  
*Platamodes unicolor*, Scudder, Journ. Boston Soc. Nat. Hist. Vol. 7, p. 417 (1862).
49. *I. deropeltiformis*, Brunner von Wattenwyl, Nouv. Syst. des Blatt. p. 87 (1865) (North America).
50. *I. hyalina*, Scudder, Trans. Amer. Ent. Soc. Vol. 2, p. 307 (1869) (Texas).
51. *I. major* (2), Saussure & Zehntner, Biol. Centr. Amer. Orth. Vol. 1, p. 54 (1893) (Tennessee, United States).
52. *I. inaequalis*, Saussure & Zehntner, ibidem, p. 36, pl. 6, f. 14-17 (1893) (Texas, Mexico).
53. *I. occidentalis*, Saussure, Rev. Zool. (2) Vol. 14, p. 170 (1862) (New Orleans, Mexico).
54. *I. coulouiana*, Saussure, ibidem, p. 169 (1862) (Texas, Mexico).
55. *I. translucida*, Saussure, Mém. Hist. Nat. Mexique, Blatt. p. 85 (1864) (North America).
56. *I. divisa*, Saussure & Zehntner, Biol. Centr. Amer. Orth. Vol. 1, p. 40 (1893) (Georgia, North Mexico).

(1) Erroneously included in the first part (*Ectobinae*) of this work.

(2) This may be synonymous with *I. hyalina*, Scudder.

57. *I. bolliana*, Saussure & Zehntner, Biol. Centr. Amer. Orth. p. 40 (1893) (Texas, New Mexico).  
 58. *I. borealis*, Brunner von Wattenwyl, Nouv. Syst. des Blatt. p. 133 (1865) (Delaware).  
 59. *I. nigricollis*, Walker, Cat. Blatt. Brit. Mus. p. 118 (1868) (Georgia).  
 60. *I. johnsoni*, Rehn, Ent. News, Philad. Vol. 14, p. 234 (1903) (Florida, Indiana).  
*I. intricata*, Blatchley, 27th Ann. Rep. Dept. Geol. and Nat. Resources of Indiana, p. 186 [1902] (1903).  
 61. *I. virginica*, Brunner von Wattenwyl, Nouv. Syst. des Blatt. p. 86 (1865) (Virginia).

**e. Neotropical Species :**

62. *I. brasiliensis*, Brunner von Wattenwyl, Nouv. Syst. des Blatt. p. 130 (1865) (Brazil).  
*I. clara*, Walker, Cat. Blatt. Brit. Mus. p. 114 (1868).  
 63. *I. rufa*, De Geer, Mém. Hist. Ins. Vol. 3, p. 538, pl. 44, f. 7 (1773) (Brazil).  
*I. rufa*, Brunner von Wattenwyl, Nouv. Syst. des Blatt. p. 131, pl. 3, f. 13 (1865).  
*I. consobrina*, Saussure, Rev. Zool. (2), Vol. 14, p. 170 (1862).  
 64. *I. marginata*, Brunner von Wattenwyl, ibidem, p. 132 (1865) (Brazil).  
 65. *I. erythrina*, Walker, Cat. Blatt. Brit. Mus. p. 219 (1868) (Brazil).  
 66. *I. fumata*, Burmeister, Handb. Ent. Vol. 2, p. 500 (1838) (Brazil).  
 67. *I. morio*, Burmeister, ibidem (1838) (Colombia).  
 68. *I. melasa*, Walker, Cat. Blatt. Brit. Mus. p. 118 (1868) (Santarem).  
 69. *I. rubiginosa*, Walker, ibidem, p. 121 (1868) (Santarem).  
 70. *I. hebes*, Walker, ibidem, p. 122 (1868) (Santarem).  
 71. *I. hamata*, Giglio-Tos, Boll. Mus. Zool. Univ. Torino, Vol. 13, n. 311, p. 4 (1898) (Ecuador).  
 72. *I. sancta*, Giglio-Tos, ibidem, p. 5 (1898) (Ecuador).  
 73. *I. josephina*, Giglio-Tos, ibidem, p. 4 (1898) (Ecuador).  
 74. *I. bilunata*, Saussure, Rev. Zool. (2), Vol. 21, p. 111 (1869) (Bolivia).  
 75. *I. vilis*, Saussure, ibidem, p. 112 (1869) (Corrientes).  
 76. *I. ocularis*, Saussure, Mém. Soc. Sc. Phys. Nat. Genève, Vol. 23, p. 103 (1873) (Cayenne).  
 77. *I. nyctoboroides*, Rehn, Proc. Acad. Nat. Sc. Philad. p. 266 (1906) (British Guiana).  
 78. *I. ignobilis*, Saussure, Rev. Zool. (2), Vol. 16, p. 313 (1864) (Buenos Aires, Guatemala).  
 79. *I. castanea*, Saussure, ibidem, Vol. 21, p. 112 (1869) (Brazil, Mexico).  
 80. *I. parvula*, Saussure, ibidem, Vol. 21, p. 112 (1869) (Brazil, Nicaragua, Cuba).  
 81. *I. festae*, Griffini, Boll. Mus. Zool. Univ. Torino, Vol. 11, n. 236, p. 2 (1896) (Panama).  
 82. *I. bergrothi*, Griffini, ibidem, p. 3 (1896) (Panama).  
 83. *I. conformis*, Saussure & Zehntner, Biol. Centr. Amer. Orth. Vol. 1, p. 37, pl. 3, f. 25 (1893) (Nicaragua).  
 84. *I. inca*, Saussure & Zehntner, ibidem, p. 38, pl. 4, f. 23 (1893) (Guatemala). — **Plate I, Fig. 6a.**  
 85. *I. nana*, Saussure & Zehntner, ibidem, p. 39 (1893) (Nicaragua).  
 86. *I. annulicornis*, Saussure & Zehntner, ibidem, p. 40 (1893) (Guatemala).  
 87. *I. undulifera*, Walker, Cat. Derm. Salt. Brit. Mus. Vol. 5, Suppl. p. 31 (1871) (Nicaragua).  
 88. *I. mexicana*, Saussure, Rev. Zool. (2), Vol. 14, p. 170 (1862) (Mexico).  
 89. *I. nahua*, Saussure, ibidem, Vol. 20, p. 356 (1868) (Mexico).  
 90. *I. asteca*, Saussure, ibidem, Vol. 14, p. 170 (1862) (Mexico).  
 91. *I. tolteca*, Saussure, ibidem, Vol. 20, p. 356 (1868) (Mexico).  
 92. *I. peruana*, Saussure, ibidem, Vol. 14, p. 169 (1862) (Peru).  
 93. *I. taczanowskii*, Bolivar, An. Soc. Esp. Hist. Nat. Vol. 10, p. 467 (1881) (Peru).  
 94. *I. elongata*, Beauvois, Ins. Afr. Amér. p. 183, Orth. pl. 1b, f. 5 (1805) (Haiti).  
 95. *I. bicolor*, Beauvois, ibidem, pl. 1b, f. 6 (1805) (Haiti).  
 96. *I. jamaicana*, Rehn, Trans. Amer. Ent. Soc. Vol. 29, p. 264 (1903) (Jamaica).  
 97. *I. adusta*, Caudell, The Canad. Entom. p. 237 (1905) (Porto Rico).  
 98. *I. excisa*, Bolivar, Mém. Soc. Zool. Fr. Vol. 1, p. 124 (1888) (Cuba).

**Doubtful species :**

99. *I. gracilis*, Burmeister, Handb. Ent. Vol. 2, p. 500, n. 2 (1838) (Cape of Good Hope).  
 100. *I. cincta*, Fabricius, Mant. Ins. Vol. 1, p. 226, n. 17 (1787) (North? America).  
 101. *I. castanea*, Blanchard, in Gay, Hist. fis. Chile, Zool. Vol. 6, p. 18, pl. 1, f. 2 (1851) (Chili).  
*? I. brevipennis*, Saussure, Rev. Zool. (2), Vol. 16, p. 313 (1864).

## 6. GENUS PARATEMNOPTERYX, SAUSSURE

**Paratemnopteryx.** Saussure, Mém. Soc. Sc. Phys. Nat. Genève, Vol. 20, p. 273 (1869).

**Characters.** — Allied to *Ischnoptera*, Burmeister, but differing in the absence of arolia between the tarsal claws. Males with fully developed tegmina and wings, females with reduced tegmina and rudimentary wings. Ulnar vein of wing sending at least one incomplete branch towards the dividing vein. Styles flattened and partially fused with the sub-genital lamina in the male sex.

**Geographical distribution of species.** — Australia.

1. *P. australis*, Saussure, Mém. Soc. Sc. Phys. Nat. Genève, Vol. 20, p. 273, pl. 3, f. 22 (1869) (Adelaide, Melbourne, Western Australia).  
*P. australis*, Tepper, Trans. Roy. Soc. S. Austral. Vol. 19, p. 149 (1895).
2. *P. blattoides*, Tepper (♂ only), ibidem, p. 150 (1895) (Melbourne). — **Plate 2, Fig. 10.**
3. *P. ? zietzi*, Tepper, Trans. Roy. Soc. S. Austral. Vol. 19, p. 20 (1895) (South Australia).

## 7. GENUS CHRASTOBLATTA, SAUSSURE & ZEHNTNER

**Chrastoblatta.** Saussure & Zehntner, in Grandidier, Hist. Nat. Madag. Orth. Vol. 1, p. 20 (1895).

**Characters.** — Head flattened, vertex broad, not covered by the pronotum. Pronotum transversely elliptical, flattened, posteriorly truncate exposing the scutellum. Tegmina narrow, crossing strongly and in repose exposing the sides of the abdomen, discoidal sectors longitudinal. Wings with narrow anterior field and few costals, ulnar vein sending two or three branches to apex of wing, one to three incomplete branches to the dividing vein, no apical triangle. Femora sparsely spined beneath, their genicular spines prominent. Supra-anal lamina transverse. Cerci elongate.

**Geographical distribution of species.** — Madagascar.

1. *C. tricolor*, Saussure & Zehntner, in Grandidier, Hist. Nat. Madag. Orth. Vol. 1, p. 21, pl. 2, f. 17 (1895) (Madagascar).
2. *C. dimidiata*, Saussure, Mém. Soc. Sc. Phys. Nat. Genève, Vol. 17, p. 160 (1863) (Madagascar).  
*Proscratea marginata*, Brunner von Wattenwyl, Nouv. Syst. des Blatt. p. 326 (1865).

## 8. GENUS PIROBLATTA, SHELFORD

**Piroblatta.** Shelford, Ann. Mag. Nat. Hist. (7), Vol. 19, p. 29 (1907).

**Characters.** — Allied to *Chrastoblatta*, Saussure & Zehntner, but head almost entirely covered by pronotum. Tegmina broad and not crossing strongly. Wings with a prominent triangular apical area; ulnar vein bifurcate and sending also two or three incomplete branches to the dividing vein. Supra-anal lamina in the male somewhat quadrately produced, in the female triangularly produced. Front femora unarmed beneath, mid- and hind-femora very sparsely armed.

**Geographical distribution of species.** — Madagascar.

1. *P. bouvieri*, Shelford, Trans. Ent. Soc. Lond. p. 236 (1906) (Madagascar).
2. *P. alluandi*, Shelford, Ann. Mag. Nat. Hist. (7), Vol. 19, p. 29 (1907) (Madagascar).

## 9. GENUS CALOBLATTA, SAUSSURE

**Caloblatta.** Saussure, Soc. Ent. Zürich, Vol. 8, p. 57 (1893); Saussure & Zehntner, Biol. Centr. Amer. Orth. Vol. 1, p. 33 (1893).

**Characters.** — Antennæ with basal half incrassated and hirsute. Vertex of head not covered by pronotum. Surface of pronotum and tegmina velvety. Pronotum discoidal, sides barely deflexed. Ulnar vein of wings sending branches to the apex of the wing and some incomplete branches to the dividing vein. Front femora armed on the anterior margin beneath, the other femora unarmed; posterior tarsi very long, equal in length to the tibiæ. Supra-anal lamina in the male transverse, in the female triangular. Cerci moderate, depressed.

**Geographical distribution of species.** — Central America.

1. *C. bicolor*, Saussure, Soc. Ent. Zürich, Vol. 8, p. 57 (1893); Saussure & Zehntner, Biol. Centr. Amer. Orth. Vol. 1, p. 33 (1893) (Costa Rica, Nicaragua).
2. *C. tricolor*, Saussure, ibidem, p. 57 (1893); Saussure & Zehntner, ibidem, p. 34, pl. 3, f. 11-13 (1893) (Guatemala, Nicaragua).

## 10. GENUS PSEUDISCHNOPTERA, SAUSSURE

**Pseudischnoptera.** Saussure, Rev. Zool. (2), Vol. 21, p. 112 (1869).

**Characters.** — Body depressed. Antennæ incrassated and hirsute throughout their entire length. Pronotum trapezoidal, anterior margin arcuate, not covering vertex of head, posterior margin truncate, exposing the scutellum. Tegmina and wings longer than the abdomen in the male, shorter than the abdomen in the female. Tegmina coriaceous and punctate, their external margins sinuate, discoidal sectors longitudinal. Wings coloured; ulnar vein giving off branches to apex of wing and to the dividing vein. Supra-anal lamina in the male triangular, sub-genital lamina elongate and with two styles. Cerci long, mid- and hind- femora unarmed on the anterior margin beneath, but with four to five spines on the posterior margin and with one median spine, near the trochanteral articulation.

**Geographical distribution of species.** — South America, West Indies.

1. *P. lineata*, Olivier, Enc. Méth. Ins. Vol. 4, p. 317 (1789) (Cayenne, Antilles).  
*P. lineata*, Saussure, Mission Sc. Mexique, Orth. p. 67 (1870).

## 11. GENUS PHYLLODROMIA, SERVILLE

**Phyllodromia.** Serville, Hist. Ins. Orth. p. 105 (1839).

**Mareta.** Bolivar, Ann. Soc. Ent. Fr. p. 369 (1895).

**Characters.** — Vertex of head not covered by pronotum, distance apart of eyes scarcely greater than their breadth. Scutellum not exposed. Tegmina and wings usually longer than the body in both sexes (1), discoidal sectors of tegmina usually oblique. Wings with the ulnar vein typically multi-ramose (2), all the rami directed towards the apex of the wing; triangular apical field sometimes present.

(1) *P. supellectilium*, Serville, is an exception.

(2) *P. germanica*, Linnæus, is an exception.



Supra-anal lamina very variable in both sexes, but typically triangularly produced in the male. Scent-gland openings usually conspicuous. Sub-genital lamina of the male with a pair of small styles. Femora strongly armed beneath. Arolia present between the tarsal claws. Oothecæ, where known, coriaceous, carried by the female with the suture directed to one side.

**Geographical distribution of species.** — Cosmopolitan.

**a. Cosmopolitan species :**

1. *P. germanica*, Linnæus, Syst. Nat. (ed. 12), Vol. 1 (2), p. 668 (1767) (Cosmopolitan).  
*Blatta obliquata*, Daldorff, Skriv. Nat. Selsk. Vol. 2 (2), p. 164 (1793).  
*Ischnoptera bivittata*, Thomas, Proc. Davenport Acad. Sc. Vol. 1, p. 250, pl. 36, f. 1, 2 (1876).
2. *P. bivittata*, Serville, Hist. Ins. Orth. p. 108 (1839) (Cosmopolitan).
3. *P. supellectilium*, Serville, ibidem, p. 114 (1839) (Cosmopolitan). — **Plate 2, Fig. 2.**  
*Blatta cubensis*, Saussure, Rev. Zool. (2), Vol. 14, p. 165 (1862).  
*Blatta capensis*, Saussure, ibidem, Vol. 16, p. 210 (1864).  
*Blatta incisa*, Walker, Cat. Blatt. Brit. Mus. p. 109 (1868).  
*Blatta extenuata*, Walker, ibidem, p. 221 (1868).  
*Ischnoptera quadriplaga*, Walker, ibidem, p. 121 (1868).  
*Blatta phalerata*, Saussure, Mém. Soc. Sc. Phys. Nat. Genève, Vol. 17, p. 151, pl. 1, f. 16 (1864).  
*Blatta subfasciata*, Walker, Cat. Derm. Brit. Mus. Vol. 5, Suppl. Blatt. p. 26 (1871).  
*Blatta transversalis*, Walker, ibidem, p. 25 (1871).  
*Blatta figurata*, Walker, ibidem, p. 24 (1871).  
*Phyllostromia delta*, Kirby, Ann. Mag. Nat. Hist. (7), Vol. 5, p. 280 (1900).
4. *P. rufescens*, Beauvois, Ins. Afr. Amér. p. 183, Orth. pl. 1 b, f. 7 (1805) (Cosmopolitan).  
*Blatta capitata*, Saussure, Rev. Zool. (2), Vol. 14, p. 167 (1862).  
*Epilampra blattoides*, Saussure, Mém. Soc. Sc. Phys. Nat. Genève, Vol. 17, p. 145 (1863).  
*Ischnoptera terminalis*, Walker, Cat. Blatt. Brit. Mus. p. 122 (1868).  
*Ischnoptera depricata*, Walker, ibidem, p. 215 (1868).

**b. Ethiopian species :**

5. *P. parenthesis*, Gerstäcker, Mitth. Ver. Vorpomm. Vol. 14, p. 57 (1883) (Ogowe, West Africa).
6. *P. hemerobina*, Gerstäcker, ibidem, p. 57 (1883) (Ogowe, West Afrika).
7. *P. centralis*, Gerstäcker, ibidem, p. 58 (1883) (Cameroons).
8. *P. pustulosa*, Gerstäcker, ibidem, p. 59 (1883) (Cameroons).
9. *P. patricia*, Gerstäcker, ibidem, p. 60 (1883) (Cameroons).
10. *P. amplicollis*, Gerstäcker, ibidem, p. 66 (1883) (Gaboon).
11. *P. obsoleta*, Gerstäcker, ibidem, p. 66 (1883) (Gold Coast).
12. *P. mirabilis*, Shelford, Deutsche Ent. Zeitschr. p. 116, pl. 2, f. 3 (1908) (Cameroons).
13. *P. conradti*, Shelford, ibidem, p. 117, pl. 2, f. 4 (1908) (Cameroons).
14. *P. neutra*, Shelford, ibidem, p. 118, pl. 2, f. 6 (1908) (Cameroons).
15. *P. alluaudi*, Bolivar, Ann. Soc. Ent. Fr. p. 171 (1893) (West Africa).
16. *P. reducta*, Walker, Cat. Blatt. Brit. Mus. p. 220 (1868) (West Africa).
17. *P. beauvoisii*, Walker, ibidem, p. 101 (1868) (Sierra Leone).
18. *P. cassiphila*, Rochebrune, Bull. Soc. Philom. Paris, (7), Vol. 7, p. 175 (1883) (Senegambia).
19. *P. munzigeri*, Saussure, Mém. Soc. Sc. Phys. Nat. Genève, Vol. 23, p. 94 (1873) (Bogos, West Africa).
20. *P. albovariegata*, Shelford, Ann. Mag. Nat. Hist. (7), Vol. 19, p. 31 (1907) (Fernando Po).
21. *P. trigonalis*, Saussure, Abh. Senckenb. Ges. Frankfurt, Vol. 21, p. 574 (1899) (East Africa).
22. *P. nigromarginata*, Shelford, Wiss. Ergebn. Schwed. Zool. Exp. Kilimandjaro etc., pt. 17, Orthoptera Blattodea, p. 19, pl. 3, f. 12 (1907) (German E. Africa, Kilimanjaro).
23. *P. sjöstedti*, Shelford, ibidem, p. 20 (1907) (German E. Africa).
24. *P. insignis*, Shelford, ibidem, p. 20, pl. 3, f. 8 (1907) (Kilimanjaro).
25. *P. testacea*, Shelford, ibidem, p. 21, pl. 2, f. 14 (1907) (German E. Africa).
26. *P. ruficeps*, Kirby, Ann. Mag. Nat. Hist. (7), Vol. 5, p. 280 (1900) (Nyasaland, N.E. Rhodesia).
27. *P. lobiventris*, Saussure, Ann. Mus. Stor. Nat. Genova, Vol. 35, p. 73 (1895) (Shoa, Gallaland).
28. *P. constricta*, Saussure, ibidem, p. 74 (1895) (Erythræa, Somaliland).

29. *P. corommensis*, Schulthess-Schindler, Ann. Mus. Stor. Nat. Genova, Vol. 39, p. 165 (1898) (Somaliland).  
 30. *P. scioana*, Adelung, Ann. Mus. Zool. St-Petersb. Vol. 9, p. 421 (1905) (Abyssinia).  
 31. *P. desertorum*, Adelung, ibidem, p. 424 (1905) (Abyssinia).  
 32. *P. cordofana*, Brunner von Wattenwyl, Nouv. Syst. des Blatt. p. 97 (1865) (Khartoum).  
 33. *P. treitliana*, Werner, Sitz. Ber. Akad. Wiss. Wien. Vol. 114, Abt. 1, p. 377 (1906) (Egypt).  
 34. *P. arundinicola*, Werner, ibidem, p. 377 (1906) (Egypt).  
 35. *P. angustefasciata*, Werner, ibidem, p. 378 (1906) (Egypt).  
 36. *P. trivirgata*, Werner, ibidem, Vol. 116, Abt. 1, p. 172 (1907) (Egyptian Soudan).  
 37. *P. aequatorialis*, Werner, ibidem, p. 172 (1907) (Egyptian Soudan).  
 38. *P. pallidula*, Werner, ibidem, p. 173 (1907) (Egyptian Soudan).  
 39. *P. madecassa*, Saussure, Ann. Mus. Stor. Nat. Genova, Vol. 35, p. 72 (1895) (Somaliland, Madagascar).  
 40. *P. saussurei*, nom. nov. (Madagascar).  
     *P. incisa*, Saussure & Zehntner, in Grandidier, Hist. Nat. Madag. Orth. Vol. 1, p. 37, pl. 1, f. 8 (1895).  
 41. *P. fissa*, Saussure & Zehntner, in Grandidier, Hist. Nat. Madag. Orth. Vol. 1, p. 39, pl. 1, f. 11 (1895) (Madagascar).  
 42. *P. ferrea*, Saussure & Zehntner, ibidem, p. 36, pl. 1, f. 7 (1895) (Madagascar).  
 43. *P. lacrymula*, Saussure & Zehntner, ibidem, p. 31, pl. 1, f. 10 (1895) (Madagascar).  
 44. *P. opima*, Saussure & Zehntner, ibidem, p. 40, pl. 1, f. 13 (1895) (Madagascar).  
 45. *P. voeltzkowiana*, Saussure & Zehntner, ibidem, p. 15, pl. 4, f. 42 (1895) (Madagascar).  
 46. *P. zehntneri*, nom. nov. (Madagascar, Kilimanjaro).  
     *Theganopteryx (Pseudectobia) punctulata* (1), Saussure & Zehntner, Hist. Nat. Madag. Orth. Vol. 1, p. 15 (1895).  
 47. *P. neglecta*, nom. nov. (Madagascar).  
     *Blatta humberiana*, Saussure, Abh. Senckenb. Ges. Frankfurt, Vol. 21, p. 574 (1899).  
 48. *P. liturifera*, Stål, Freg. Eugen. Resa, Ent. p. 308 (1858) (Mauritius).  
 49. *P. innotabilis*, Walker, Cat. Derm. Salt. Mus. Vol. 5, Suppl. Blatt. p. 21 (1871) (Seychelles).  
     *Mareta conspicienda*, Bolivar, Ann. Soc. Ent. Fr. p. 371 (1895).  
 50. *P. bitaeniata*, Stål, Oefv. Vet. Akad. Förh. Vol. 15, p. 308 (1858) (South-Africa).  
 51. *P. macilenta*, Saussure & Zehntner, in Grandidier, Hist. Nat. Madag. Orth. Vol. 1, p. 33, pl. 1, f. 12 (1895) (South Africa).  
 52. *P. macroptera*, Walker, Cat. Blatt. Brit. Mus. p. 104 (1868) (Natal).

### c. Oriental species :

53. *P. reticulata*, Fabricius, Ent. Syst. Suppl. p. 186 (1798) (India).  
 54. *P. marginata*, Bolivar, Ann. Soc. Ent. Fr. p. 288 (1897) (S. India).  
 55. *P. humberiana*, Saussure, Mém. Soc. Sc. Phys. Nat. Genève, Vol. 17, p. 130 (1863) (India, China).  
     *Phyllodromia cognata*, Brunner von Wattenwyl, Nouv. Syst. des Blatt. p. 92 (1865).  
     *Blatta lalistriga*, Walker, Cat. Blatt. Brit. Mus. p. 106 (1868).  
     *Blatta subreticulata*, Walker, Cat. Derm. Salt. Brit. Mus. Vol. 5, Suppl. Blatt. p. 23 (1871).  
 56. *P. telephoroides*, Walker, Cat. Derm. Salt. Brit. Mus. Vol. 5, Suppl. Blatt. p. 23 (1871) (Bombay).  
     *Blatta annulifera*, Walker, ibidem, p. 24 (1871).  
 57. *P. fasciceps*, Walker, ibidem, p. 25 (1871) (Bombay).  
 58. *P. lycoides*, Walker, ibidem, p. 23 (1871) (Bombay).  
 59. *P. inexacta*, Walker, ibidem, p. 26 (1871) (Bombay).  
 60. *P. submarginata*, Walker, ibidem, p. 27 (1871) (Cahar).  
 61. *P. ramifera*, Walker, ibidem, p. 27 (1871) (Nepaul).  
 62. *P. luneli*, Saussure, Rev. Zool. (2), Vol. 20, p. 355 (1868) (Nilgiris).  
 63. *P. diluta*, Saussure, Mém. Soc. Sc. Phys. Nat. Genève, Vol. 17, p. 153 (1863) (Ceylon).  
 64. *P. ceylanica*, Saussure, Rev. Zool. (2), Vol. 20, p. 355 (1868) (Ceylon).  
 65. *P. mendica*, nom. nov. (Ceylon, India).  
     *Blatta humberiana*, Saussure, Mém. Soc. Sc. Phys. Nat. Genève, Vol. 17, p. 155 (1863); Vol. 20, p. 246 (1869).  
 66. *P. mellea*, Krauss, Anz. Akad. Wiss. Wien, p. 54 (1902) (Arabia).

(1) Erroneously included in the first part (*Ectobinae*) of this work.

67. *P. curvinervis*, Saussure & Zehntner, in Grandidier, Hist. Nat. Madag. Orth. Vol. 1, p. 32 (1895) (Burma, Java).
68. *P. aliena*, Brunner von Wattenwyl, Ann. Mus. Stor. Nat. Genova, Vol. 33, p. 15 (1893) (Upper Burma).
69. *P. birmanica*, Brunner von Wattenwyl, ibidem, p. 17, pl. 1, f. 4 (1893) (Burma).
70. *P. unicolor*, Brunner von Wattenwyl, ibidem, p. 18 (1893) (Mandalay, Burma).
71. *P. subtilis*, Brunner von Wattenwyl, ibidem, p. 18 (1893) (Pegu, Burma).
72. *P. brunneri*, nom. nov. (Upper Burma).  
*P. punctulata*, Brunner von Wattenwyl, Ann. Mus. Stor. Nat. Genova, Vol. 33, p. 18 (1893).
73. *P. feae*, nom. nov. (Burma).  
*P. marmorata*, Brunner von Wattenwyl, Ann. Mus. Stor. Nat. Genova, Vol. 33, p. 19 (1893).
74. *P. vicina*, Brunner von Wattenwyl, ibidem, p. 19 (1893) (Burma).
75. *P. immunda*, Brunner von Wattenwyl, ibidem, p. 20 (1893) (Pegu, Burma).
76. *P. fuliginosa*, Brunner von Wattenwyl, ibidem, p. 16, pl. 1, f. 2 (1893) (Burma).
77. *P. lugubris*, Brunner von Wattenwyl, ibidem, p. 16, pl. 1, f. 3 (1893) (Rangoon, Burma).
78. *P. majuscula*, Walker, Cat. Blatt. Brit. Mus. Suppl. p. 139 (1869) (Siam).
79. *P. polygrapha*, Walker, Cat. Blatt. Brit. Mus. p. 222 (1868) (Siam).
80. *P. sordida*, Brunner von Wattenwyl, Nouv. Syst. des Blatt. p. 104 (1868) (Cambodia).
81. *P. marmorata*, Walker, Cat. Blatt. Brit. Mus. Suppl. p. 140 (1869) (Mt Ophir, Malay Peninsula). —  
**Plate 2, Fig. 1.**
82. *P. vilis*, Brunner von Wattenwyl, Nouv. Syst. des Blatt. p. 103 (1865) (Malacca).
83. *P. lituricollis*, Walker, Cat. Blatt. Brit. Mus. p. 105 (1868) (Bhamo, Upper Burma; Amoy, China).  
*Blatta colligata*, Walker, ibidem, p. 221 (1868).  
*P. bisignata*, Brunner von Wattenwyl, Ann. Mus. Stor. Nat. Genova, Vol. 33, p. 15, pl. 1, f. 1 (1893).
84. *P. isomorpha*, Walker, Cat. Blatt. Brit. Mus. p. 108 (1868) (Hong-Kong).
85. *P. sinensis*, Walker, ibidem, Suppl. p. 148 (1869) (Hong-Kong).
86. *P. pallidiola*, Shiraki, Ann. Zool. Japon, Vol. 6, p. 20, pl. 2, f. 1 (1906) (Japan).
87. *P. ferruginea*, Brunner von Wattenwyl, Nouv. Syst. des Blatt. p. 102 (1865) (East Indies).
88. *P. megaspila*, Walker, Cat. Blatt. Brit. Mus. p. 98 (1868) (Penang, Java).  
*Blatta arborifera*, Walker, ibidem, p. 100 (1868).
89. *P. picturata*, Shelford, Ann. Mag. Nat. Hist. (7), Vol. 19, p. 30 (1907) (Singapore).
90. *P. contingens*, Walker, Cat. Blatt. Brit. Mus. p. 229 (1868) (Singapore, Borneo).  
*Blatta humeralis*, Walker, ibidem, Suppl. p. 140 (1869).
91. *P. virescens*, Walker, Cat. Blatt. Brit. Mus. p. 231 (1868) (Borneo).
92. *P. obtusifrons*, Walker, ibidem, p. 226 (1868) (Borneo).
93. *P. elegans*, Walker, ibidem, p. 226 (1868) (Borneo).
94. *P. laterifera*, Walker, ibidem, p. 231 (1868) (Borneo).
95. *P. hamifera*, Walker, ibidem, p. 224 (1868) (Borneo).
96. *P. funebris*, Walker, ibidem, p. 225 (1868) (Borneo).
97. *P. notulata*, Stål, Freg. Eugèn. Resa, Ent. p. 308 (1858) (Borneo, Java, Tahiti).  
*P. hieroglyphica*, Brunner von Wattenwyl, Nouv. Syst. des Blatt. p. 105 (1865).
98. *P. irregulariter-vittata*, Brunner von Wattenwyl, Abh. Senckenb. Ges. Frankfurt, Vol. 24, p. 202, pl. 16, f. 1 (1898) (Borneo, Java).
99. *P. rectangulariter-vittata*, Brunner von Wattenwyl, ibidem, p. 203, pl. 16, f. 3 (1898) (Borneo).
100. *P. triangulariter-vittata*, Brunner von Wattenwyl, ibidem, p. 203, pl. 16, f. 4 (1898) (Borneo).
101. *P. longecalata*, Brunner von Wattenwyl, ibidem, p. 205, pl. 16, f. 9 (1898) (Borneo).
102. *P. nitens*, Brunner von Wattenwyl, ibidem, p. 204, pl. 16, f. 6 (1898) (Borneo).
103. *P. castanea*, Brunner von Wattenwyl, ibidem, p. 204, pl. 16, f. 7 (1898) (Borneo).
104. *P. terminalis*, Brunner von Wattenwyl, ibidem, p. 206, pl. 16, f. 11 (1898) (Borneo).
105. *P. puncticollis*, Brunner von Wattenwyl, ibidem, p. 206, pl. 16, f. 12 (1898) (Borneo).
106. *P. nimbata*, Shelford, Ann. Mag. Nat. Hist. (7), Vol. 19, p. 31 (1907) (Borneo).
107. *P. nebulosa*, Shelford, ibidem, p. 32 (1907) (Borneo).
108. *P. hevitii*, Shelford, ibidem, p. 33 (1907) (Borneo).
109. *P. picteti*, Fritze, Rev. Suisse Zool. Vol. 7, p. 337 (1899) (Java).
110. *P. subgenitalis*, Fritze, ibidem, p. 336 (1899) (Java, Sumatra).
111. *P. nodosa*, Fritze, ibidem, p. 335 (1899) (Java).

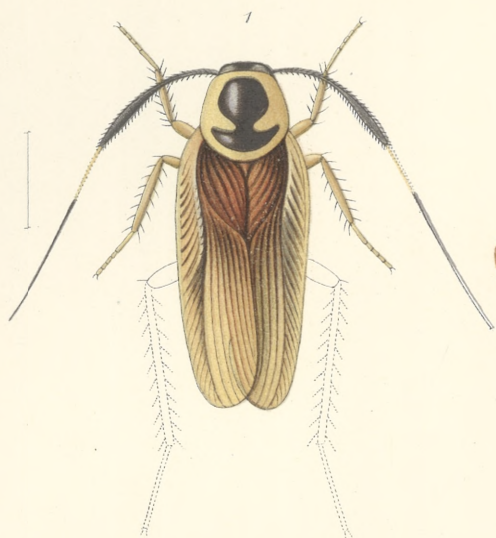
112. *P. adversa*, Saussure & Zehntner, in Grandidier, Hist. Nat. Madag. Orth. Vol. 1, p. 33, pl. 1, f. 9 (1895) (Java).  
 113. *P. variegata*, Brunner von Wattenwyl, Abh. Senckenb. Ges. Frankfurt, Vol. 24, p. 205, pl. 16, f. 10 (1898) (Java).  
 114. *P. latius-vittata*, Brunner von Wattenwyl, ibidem, p. 202, pl. 16, f. 2 (1898) (Java).  
 115. *P. molesta*, Brunner von Wattenwyl, ibidem, p. 203, pl. 16, f. 5 (1898) (Java).  
 116. *P. secura*, Krauss, Denkschr. Med. Nat. Ges. Jena, Vol. 8, p. 749 (1903) (Java).  
 117. *P. anceps*, Krauss, ibidem, p. 749 (1903) (Java).  
 118. *P. picticollis*, Walker, Cat. Blatt. Brit. Mus. Suppl. p. 140 (1869) (Celebes).  
 119. *P. ignobilis*, Walker, Cat. Blatt. Brit. Mus. p. 224 (1868) (Sula Islands).  
 120. *P. sequens*, Walker, ibidem, p. 229 (1868) (Celebes).  
 121. *P. nigrolineata*, Stål, Oefv. Vet.-Akad. Förh. Vol. 34, p. 34 (1877) (Philippines).

**d. Australian species :**

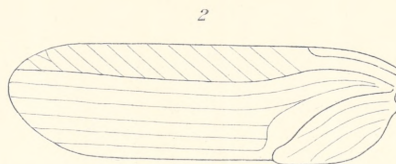
122. *P. affinis*, Saussure, Mém. Soc. Sc. Phys. Nat. Genève, Vol. 20, p. 248 (1869) (Banda).  
 123. *P. amplexans*, Walker, Cat. Blatt. Brit. Mus. p. 223 (1868) (Morty).  
 124. *P. guttifera*, Walker, ibidem, p. 230 (1868) (Aru Islands).  
 125. *P. suffusa*, Walker, ibidem, p. 223 (1868) (New Guinea).  
 126. *P. contigua*, Walker, ibidem, p. 228 (1868) (Celebes, New Guinea).  
*Blatta propinqua*, Walker, ibidem, p. 228 (1868).  
 127. *P. papua*, Saussure & Zehntner, in Grandidier, Hist. Nat. Madag. Orth. Vol. 1, p. 25, foot-note (1895) (Rockhampton, Australia).  
 128. *P. concisa*, Walker, Cat. Derm. Salt. Brit. Mus. Vol. 5, Suppl. Blatt. p. 29 (1871) (Australia).  
 129. *P. liturata*, Tepper, Trans. Roy. Soc. S. Austral. Vol. 19, p. 150 (1895) (Victoria).  
 130. *P. magna*, Tepper, ibidem, p. 19 (1895) (South Australia).  
 131. *P. conjuncta*, Walker, Cat. Blatt. Brit. Mus. p. 109 (1868) (New Zealand).  
 132. *P. obtusata*, Brunner von Wattenwyl, Proc. Zool. Soc. Lond. p. 892 (1895) (Hawaiian Islands).  
 133. *P. hospes*, Perkins, Fauna Hawaii. Orth. p. 5 (1899) (Hawaiian Islands).

**e. Neotropical species :**

134. *P. adspersicollis*, Stål, Freg. Eugen. Resa, Ent. p. 308 (1858) (Brazil, West Indies, Honduras).  
*Blatta latimargo*, Walker, Cat. Blatt. Brit. Mus. p. 97 (1868).  
 135. *P. pellucida*, Burmeister, Handb. Ent. Vol. 2, p. 498 (1838) (Brazil).  
 136. *P. conspersa*, Brunner von Wattenwyl, Nouv. Syst. des Blatt. p. 106 (1865) (Brazil).  
 137. *P. fasciata*, Brunner von Wattenwyl, ibidem, p. 107 (1865) (Brazil).  
 138. *P. minor*, Brunner von Wattenwyl, ibidem, p. 94 (1865) (Brazil).  
 139. *P. annulicornis*, Walker, Cat. Blatt. Brit. Mus. p. 219 (1868) (Brazil).  
 140. *P. parana*, Walker, ibidem, p. 100 (1868) (Para, Brazil).  
 141. *P. santarema*, Walker, ibidem, p. 107 (1868) (Santarema, Brazil).  
 142. *P. flexivitta*, Walker, ibidem, p. 216 (1868) (Santarema, Brazil).  
 143. *P. varicornis*, Walker, ibidem, p. 216 (1868) (Santarema, Brazil).  
 144. *P. cercalis*, Walker, ibidem, p. 214 (1868) (? Brazil).  
 145. *P. partita*, Walker, ibidem, p. 104 (1868) (? Brazil).  
 146. *P. fusca*, Saussure, Rev. Zool. (2), Vol. 21, p. 110 (1869) (Corrientes, Argentine).  
 147. *P. borellii*, Giglio-Tos, Boll. Mus. Zool. Univ. Torino, Vol. 9, n. 184, p. 2 (1894) (Paraguay).  
 148. *P. titania*, Rehn, Trans. Amer. Ent. Soc. Vol. 29, p. 267 (1903) (British Guiana).  
 149. *P. inexpectata*, Rehn, Proc. Acad. Nat. Sc. Philad. p. 268 (1906) (British Guiana).  
 150. *P. albida*, Saussure, Rev. Zool. (2), Vol. 21, p. 110 (1869) (New Granada).  
 151. *P. festae*, Giglio-Tos, Boll. Mus. Zool. Univ. Torino, Vol. 13, n. 311, p. 2 (1898) (Ecuador).  
 152. *P. nigrita*, Bolivar, An. Soc. Esp. Hist. Nat. Vol. 10, p. 477 (1881) (Ecuador).  
 153. *P. pallipes*, Scudder, Proc. Boston Soc. Nat. Hist. Vol. 12, p. 342 (1869) (Napo, Peru).  
 154. *P. intermedia*, Saussure & Zehntner, Biol. Centr. Amer. Orth. Vol. 1, p. 18 (1893) (Peru).  
 155. *P. reticularis*, Blanchard, in Gay, Hist. fis. Chile, Zool. Vol. 6, p. 15 (1852) (Chili).



*Pseudomops angusta.*



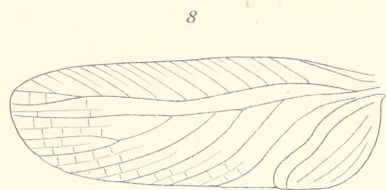
*Pseudomops magna.*



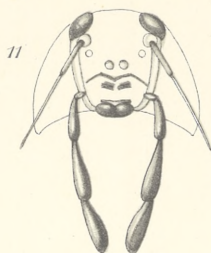
*Pseudothyrsocera pica*



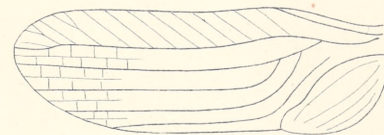
*Luppavia adimontialis*



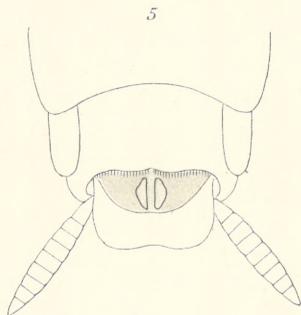
*Pseudophyllodromia laticeps.*



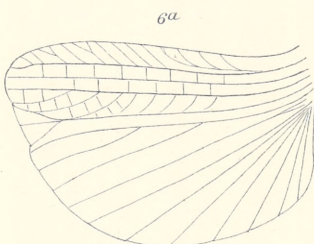
*Duryodana palpalis*



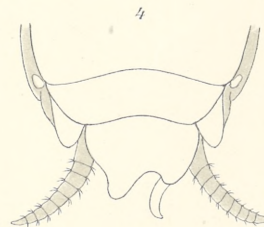
*Pseudophyllodromia hystrix.*



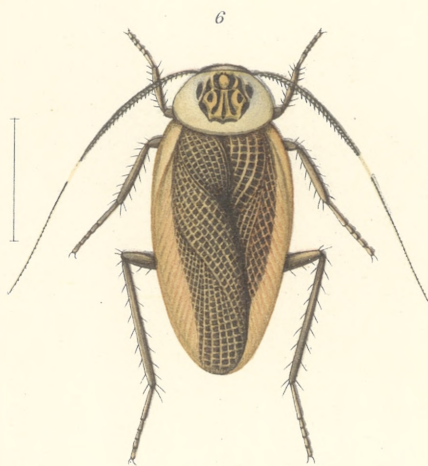
*Ischnoptera bimaculata*



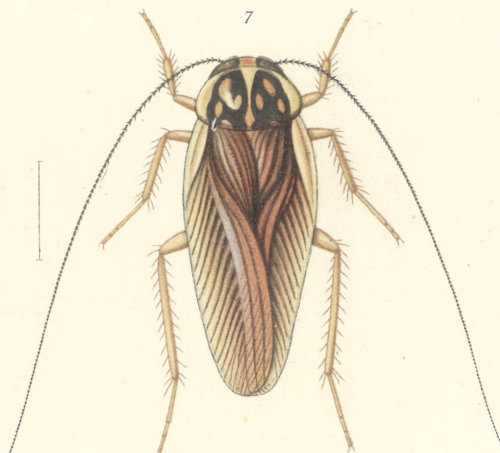
*Ischnoptera inca.*



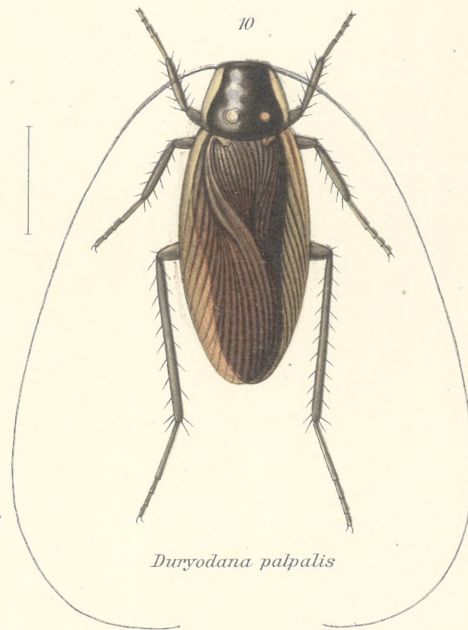
*Ischnoptera natalensis. ♂*



*Ellipsoidion castaneum*



*Pseudophyllodromia angustata*

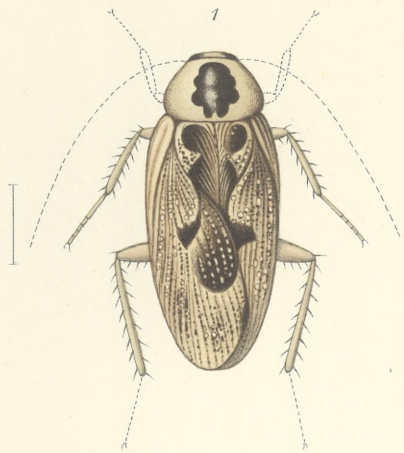


*Duryodana palpalis*

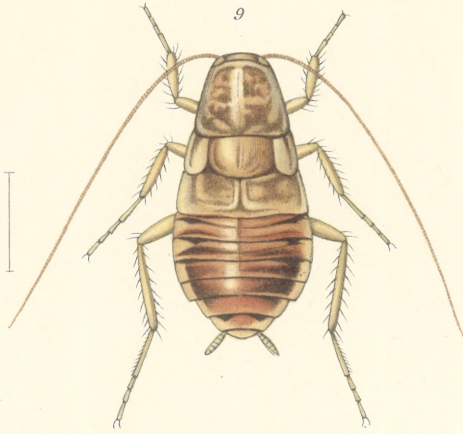
FAM. BLATTIDÆ

SUBFAM. PHYLLODROMIINÆ

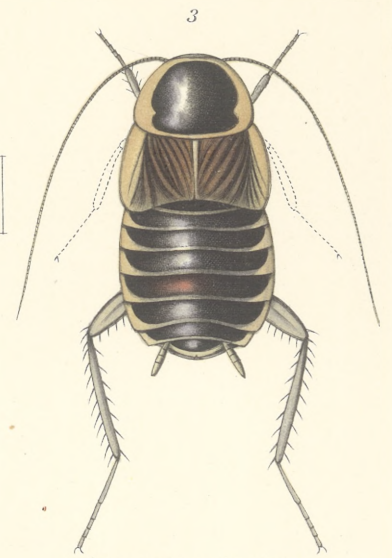




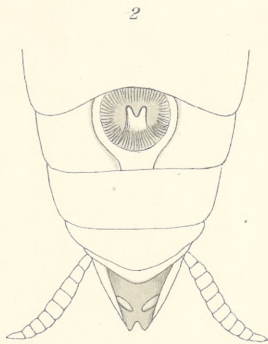
*Phyllodromia marmorata*



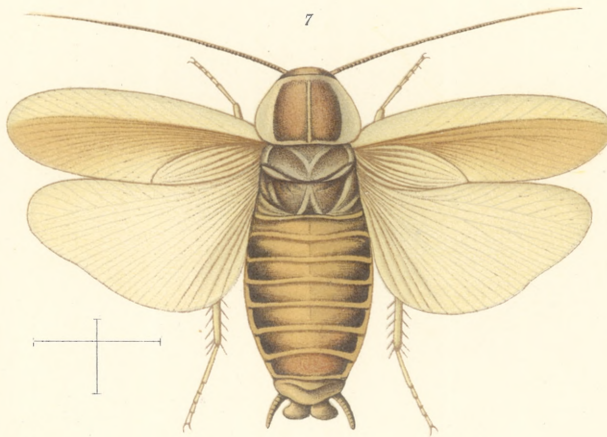
*Lobopecta peculiaris*



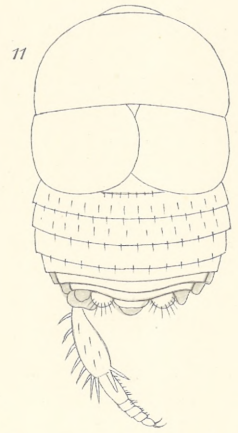
*Temnopteryx abyssinica*



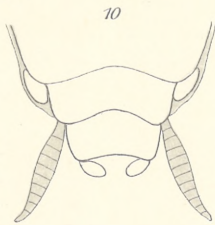
*Phyllodromia supellectilium*. ♂



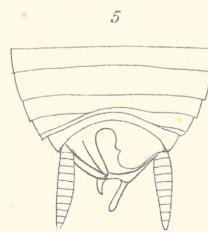
*Allacta spuria*



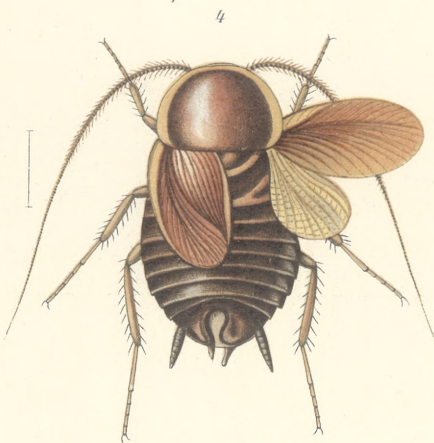
*Attaphila bergi*. ♂



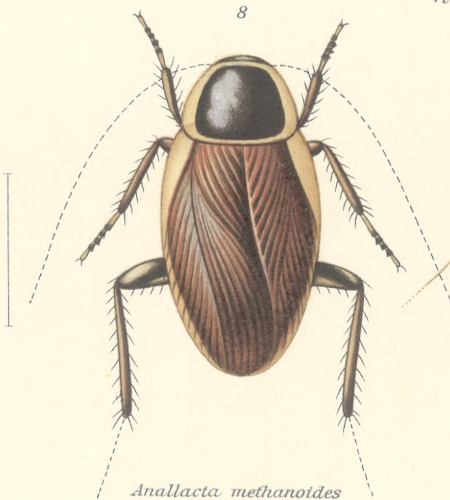
*Paratemnopteryx blattoides* ♂



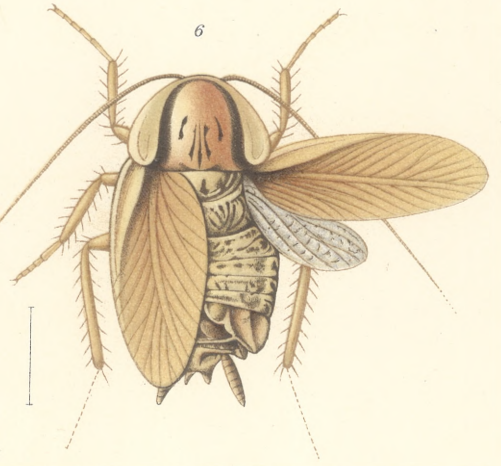
*Anisopygia jocosichunis* ♂



*Anisopygia jocosichunis*



*Anallacta methanoides*



*Ceratoptera inscripta*

FAM. BLATTIDÆ

SUBFAM. PHYLLODROMIINÆ





156. *P. strigata*, Blanchard, in Gay, Hist. fis. Chile, Zool. Vol. 6, p. 17, pl. 1, f. 4 (1852) (Chili).  
 157. *P. pavidata*, Rehn, Trans. Amer. Ent. Soc. Vol. 29, p. 268 (1903) (Costa Rica).  
 158. *P. spectativa*, Rehn, ibidem, p. 268 (1903) (Costa Rica).  
 159. *P. fraterna*, Saussure & Zehntner, Biol. Centr. Amer. Orth. Vol. 1, p. 44 (1893) (Chontales, Nicaragua).  
 160. *P. subpectinata*, Saussure & Zehntner, ibidem, p. 17, pl. 4, f. 18 (1893) (Guatemala).  
 161. *P. zapoteca*, Saussure, Rev. Zool. (2), Vol. 14, p. 166 (1862) (Guatemala, Mexico).  
 162. *P. brunneriana*, Saussure, ibidem, Vol. 20, p. 98 (1868) (Mexico).  
 163. *P. nahua*, Saussure, ibidem, p. 355 (1868) (Mexico).  
 164. *P. totonaca*, Saussure, ibidem, Vol. 14, p. 165 (1862) (Mexico).  
 165. *P. dilatata*, Saussure, ibidem, Vol. 20, p. 98 (1868) (Mexico).  
 166. *P. orizabae*, Saussure, ibidem, p. 355 (1868) (Mexico).  
 167. *P. acolhua*, Saussure, ibidem, p. 99 (1868) (Mexico).  
 168. *P. mexicana*, Saussure, ibidem, Vol. 16, p. 311 (1864) (Mexico).  
 169. *P. vitrea*, Brunner von Wattenwyl, Nouv. Syst. des Blatt. p. 109, pl. 2, f. 8 (1865) (Mexico, ? Fiji).  
 170. *P. azteca*, Saussure & Zehntner, Biol. Centr. Amer. Orth. Vol. 1, p. 43 (1893) (Mexico).  
 171. *P. alaris*, Saussure & Zehntner, ibidem, p. 43 (1893) (Mexico).  
 172. *P. maya*, Saussure & Zehntner, ibidem, p. 45 (1893) (Mexico).  
 173. *P. chichimeca*, Saussure & Zehntner, ibidem, p. 46, pl. 4, f. 22 (1893) (Mexico).  
 174. *P. punctulata*, Beauvois, Ins. Afr. Amér. p. 184, Orth. pl. 1 b, f. 8 (1805) (Mexico, Haiti, Cuba).  
*Blatta delicatula*, Guérin, in Ramon de la Sagra, Hist. Cuba, Ins. p. 346 (1847).  
 175. *P. vacillans*, Walker, Cat. Blatt. Brit. Mus. p. 114 (1868) (Haiti).  
 176. *P. incisa*, Walker, ibidem, p. 109 (1868) (Haiti).  
 177. *P. antiguensis*, Saussure & Zehntner, Biol. Centr. Amer. Orth. Vol. 1, p. 17 (1893) (Antigua, Cuba).  
 178. *P. detersa*, Walker, Cat. Blatt. Brit. Mus. p. 215 (1868) (Jamaica).  
 179. *P. reticulosa*, Walker, ibidem, p. 103 (1868) (Jamaica, Saint Vincent).  
*P. semivitrea*, Brunner von Wattenwyl, Proc. Zool. Soc. Lond. p. 203, pl. 15, f. 2 (1892).  
 180. *P. insularis*, Walker, Cat. Blatt. Brit. Mus. p. 101 (1868) (Jamaica).  
 181. *P. notata*, Brunner von Wattenwyl, Proc. Zool. Soc. Lond. p. 602, pl. 52, f. 1 (1893) (Grenada).  
 182. *P. infuscata*, Bruner, Journ. New York Ent. Soc. Vol. 14, p. 139 (1906) (Trinidad).  
 183. *P. binotata*, Bruner, ibidem, p. 140 (1906) (Trinidad).

#### Doubtful species :

184. *Blatta asiatica*, Pallas, Reise, Vol. 2, p. 727 (1773) (Siberia).  
 185. *Blatta bicincta*, Walker, in Melliss, St. Helena, p. 166 (1875) (St Helena).

## 12. GENUS DURYODANA, KIRBY

**Duryodana.** Kirby, Ann. Mag. Nat. Hist. (7), Vol. 12, p. 274 (1903).

**Characters.** — Differs only from *Phyllodromia*, Serville, in the very large size of the maxillary palpi.

**Geographical distribution of species.** — Borneo.

1. *D. palpalis*, Walker, Cat. Blatt. Brit. Mus. p. 225 (1868) (Borneo). — **Plate I, Fig. 10, 11.**

*Phyllodromia palpata*, Brunner von Wattenwyl, Abh. Senckenb. Ges. Frankfurt, Vol. 24, p. 207, pl. 16, f. 13 (1898).

## 13. GENUS DESMOSIA, BOLIVAR

**Desmosia.** Bolivar, Ann. Soc. Ent. Fr. p. 369 (1895).

**Characters.** — Front of head rather convex, separated from the vertex by the eyes, which are adjoined, a suture only dividing them. Palpi slender, second joint twice as long as third. First joint

of antennæ very long. Pronotum transversely elliptical, anteriorly truncate not covering vertex of head, posteriorly slightly arcuate. Tegmina and wings as in *Phyllodromia*. Seventh abdominal tergite of male with the posterior margin sinuate. Supra-anal lamina of male transverse, its posterior margin obtusely angulate and excised in the middle. Sub-genital lamina of male small, with two styles. Cerci long, the apical half subulate.

**Geographical distribution of species.** — Seychelle Islands.

1. *D. alluaudi*, Bolivar, Ann. Soc. Ent. Fr. p. 371 (1895) (Seychelle Islands).

#### 14. GENUS ONYCHOSTYLUS, BOLIVAR

**Onychostylus.** Bolivar, Ann. Soc. Ent. Fr. p. 289 (1897).

**Characters.** — Allied to *Phyllodromia*, Serville, but with the last joint of the maxillary palpi much shorter than the penultimate joint. Pronotum transverse. Supra-anal lamina in the male transverse, in the female with a median lobe, narrowly excised in the middle. Sub-genital lamina in the male deeply excised, styles bifid at apex and spined.

**Geographical distribution of species.** — India.

1. *O. unguiculatus*, Bolivar, Ann. Soc. Ent. Fr. p. 290, pl. 10, f. 4, 4a, 4b (1897) (Trichinopoly, India).

#### 15. GENUS LUPPARIA, WALKER

**Lupparia.** Walker, Cat. Blatt. Brit. Mus. p. 65 (1868)

**Pseudectobia.** Saussure, Mém. Soc. Sc. Phys. Nat. Genève, Vol. 20, p. 234 (1869); Shelford, Ann. Mag. Nat. Hist. (7), Vol. 19, p. 36 (1907).

**Characters.** — Allied to *Phyllodromia*, Serville but wings with a prominent triangular apical area, ulnar vein ramose. Femora strongly armed. Supra-anal lamina produced triangularly.

**Geographical distribution of species.** — Mascarene Islands, India Malay Archipelago.

1. *L. insularis*, Saussure, Mém. Soc. Sc. Phys. Nat. Genève, Vol. 20, p. 237 (1869) (Mauritius).
2. *L. pallidula*, Bolivar, Ann. Soc. Ent. Fr. p. 287, pl. 10, f. 3 (1897) (South India).
3. *L. adimonialis*, Walker, Cat. Blatt. Brit. Mus. p. 66 (1868) (Philippines). — Plate I, Fig. 12.

#### 16. GENUS LIOSILPHA, STÅL

**Liosilpha.** Stål, Bih. Svensk. Akad. Vol. 2 (13), p. 10 (1874).

**Characters.** — Broad, convex insects. Tegmina short, scarcely exceeding apex of abdomen, their venation often obsolete in the anal and discoidal fields, marginal field broad. Wings with a minute apical triangle or none, ulnar vein multiramose. Femora strongly armed. Sub-genital lamina of male with large, asymmetrical and strongly chitinised styles.

**Geographical distribution of species.** — Africa, Japan, Brazil.

1. *L. curta*, Walker, Cat. Blatt. Brit. Mus. p. 220 (1868) (Congo).
2. *L. anomala*, Saussure, Mém. Soc. Sc. Phys. Nat. Genève, Vol. 20, p. 248 (1869) (Gaboon).
3. *L. alluaudi*, Shelford, Ann. Mag. Nat. Hist. (7), Vol. 19, p. 35 (1907) (Madagascar).
4. *L. japonica*, Shelford, ibidem, p. 33 (1907) (Japan).
5. *L. pumicata*, Stål, Freg. Eugen. Resa, Ent. p. 309 (1858) (Brazil).

## 17. GENUS PSEUDOPHYLLODROMIA, BRUNNER VON WATTENWYL

**Pseudophyllodromia.** Brunner von Wattenwyl, *Nouv. Syst. des Blatt.* p. 111 (1865).

**Characters.** -- Head very broad, not covered by the pronotum, eyes widely separate. Pronotum transversely elliptical. Tegmina somewhat attenuated towards apex, anterior ulnar vein ramose, posterior ulnar vein simple, angled. Wings with ulnar vein ramose. Supra-anal lamina triangular, produced. Front femora with a few long spines on anterior margin beneath, succeeded distally by close-set pili-form setæ.

**Geographical distribution of species.** -- Borneo, Singapore, Philippines, Central and South America.

The Oriental species differ from the Neotropical species in the following characters :

<i>Branches of ulnar vein of tegmina oblique numerous, branches of ulnar vein of wings numerous</i> . . . . .	PSEUDOPHYLLODROMIA.
<i>Branches of ulnar vein of tegmina longitudinal, parallel, three in number, branches of ulnar vein of wings three to four in number</i> . . . . .	EUPHYLLODROMIA, nov. subg.

## a. PSEUDOPHYLLODROMIA

1. *P. ornata*, Brunner von Wattenwyl, *Nouv. Syst. des Blatt.* p. 112 (1865) (Philippines).
2. *P. laticeps*, Walker, *Cat. Blatt. Brit. Mus. Suppl.* p. 142 (1869) (Singapore, Borneo). — **Plate I, Fig. 8.**  
*Phyllodromia laticaput*, Brunner von Wattenwyl, *Abh. Senckenb. Ges. Frankf.* Vol. 24, p. 205, pl. 16, f. 8 (1898).
3. *P. pulcherrima*, Shelford, *Trans. Ent. Soc. Lond.* p. 266, pl. 14, f. 3 (1906) (Sarawak, Borneo).
4. *P. bipunctata*, Walker, *Cat. Blatt. Brit. Mus. Suppl.* p. 141 (1869) (Celebes).

## b. EUPHYLLODROMIA

5. *P. alternans*, Serville, *Hist. Ins. Orth.* p. 114 (1839) (Cayenne).
6. *P. pavonacea*, Rehn, *Trans. Amer. Ent. Soc.* Vol. 29, p. 263 (1903) (British Guiana).
7. *P. prona*, Rehn, *Proc. Acad. Nat. Sc. Philad.* p. 264 (1906) (British Guiana).
8. *P. fasciatella*, Saussure, *Rev. Zool.* (2), Vol. 20, p. 99 (1868) (Surinam).
9. *P. hystrix*, Saussure, *ibidem*, Vol. 21, p. 110 (1869) (Venezuela, Colombia). — **Plate I, Fig. 9.**  
*P. histrio*, Saussure, *Mission Sc. Mexique*, Vol. 6, p. 46 (1870).
10. *P. heydeniana*, Saussure, *Rev. Zool.* (2), Vol. 16, p. 313 (1864) (Brazil).
11. *P. obscura*, Saussure, *Mém. Soc. Sc. Phys. Nat. Genève*, Vol. 23, p. 98 (1873) (Brazil).
12. *P. lineolata*, Dalman, *Anal. Ent.* p. 87 (1823) (Brazil).  
*? P. lineolata*, Saussure, *Mém. Soc. Sc. Phys. Nat. Genève*, Vol. 23, p. 98 (1873).
13. *P. variegata*, Walker, *Cat. Blatt. Brit. Mus.* p. 112 (1868) (Brazil).
14. *P. perloides*, Walker, *ibidem*, p. 217 (1868) (Brazil).
15. *P. peruana*, Saussure, *Rev. Zool.* (2), Vol. 16, p. 311 (1864) (Peru).
16. *P. angustata*, Latreille, in *Humboldt & Bonpland., Observ. Zool.* Vol. 1, p. 146, pl. 15, f. 9 (1807) (Vera Cruz, Mexico).  
*Blatta venosa*, Saussure, *Rev. Zool.* (2), Vol. 16, p. 310 (1864). — **Plate I, Fig. 7.**

**Doubtful species :**

17. *P. liturifera*, Walker, *Cat. Derm. Salt. Brit. Mus.* Vol. 5, *Suppl. Blatt.* p. 21 (1871) (West Coast of North America).

## 18. GENUS MACROPHYLLODROMIA, SAUSSURE & ZEHNTNER

**Macrophyllodromia.** Saussure & Zehntner, Biol. Centr. Amer. Orth. Vol. 1, p. 46 (1893).

**Characters.** — Allied to *Pseudophyllodromia*, Brunner von Wattenwyl, but tegmina broader, their anterior field very broad, with numerous costal veins, discoidal sectors oblique. Wings with anterior field very broad, ulnar vein multiramose. Front femora armed beneath on the front margin with a complete row of long spines.

**Geographical distribution of species.** — Mexico.

1. *M. maximiliani*, Saussure, Mém. Soc. Sc. Phys. Nat. Genève, Vol. 23, p. 100, pl. 10, f. 35 (1873) (Mexico).

## 19. GENUS ALLACTA, SAUSSURE & ZEHNTNER

**Allacta.** Saussure & Zehntner, in Grandidier, Hist. Nat. Madag. Orth. Vol. 1, p. 45 (1895).

**Abrodiaeta.** Brunner von Wattenwyl, Ann. Mus. Stor. Nat. Genova, Vol. 33, p. 20 (1893).

**Characters.** — Small species, very like *Phyllodromia* in appearance. Tegmina and wings usually shorter than the body. Median vein of wings absent or given off as a branch of the radial, sometimes branched, costal veins few and irregular, ulnar vein ramose. Supra-anal lamina rounded. Femora weakly spined.

**Geographical distribution of species.** — India, Ceylon, Burma, Borneo, Australia.

1. *A. crassivenosa*, Bolivar, Ann. Soc. Ent. Fr. p. 290 (1897) (India).
2. *A. latipennis*, Brunner von Wattenwyl, Nouv. Syst. des Blatt. p. 109 (1865) (Ceylon, New Zealand?, Australia?).
3. *A. modesta*, Brunner von Wattenwyl, Ann. Mus. Stor. Nat. Genova, Vol. 33, p. 21, pl. 1, f. 5 (1893) (Burma)
4. *A. parva*, Shelford, Trans. Ent. Soc. Lond. p. 268 (1906) (Borneo).
5. *A. spuria*, Brunner von Wattenwyl, Nouv. Syst. des Blatt. p. 96 (1865) (Fiji, Australia). — **Plate 2, Fig. 7.**  
*Blatta mundicola*, Walker, Cat. Blatt. Brit. Mus. p. 101 (1868).  
*Blatta inguinata*, Walker, ibidem, p. 103 (1868).  
*Blatta latirupta*, Walker, ibidem, Suppl. p. 143 (1869).  
*Blatta bitaeniata*, Saussure, Mém. Soc. Sc. Phys. Nat. Genève, Vol. 20, p. 243 (1869).  
*Apolyta marginata*, Tepper, Trans. Roy. Soc. S. Austral. Vol. 19, p. 152 (1895).
6. *A. similis*, Saussure, Mém. Soc. Sc. Phys. Nat. Genève, Vol. 20, p. 245 (1869) (Australia).  
*Blatta patula*, Walker, Cat. Blatt. Brit. Mus. Suppl. p. 143 (1869).  
*Apolyta pallida*, Tepper, Trans. Roy. Soc. S. Austral. Vol. 17, p. 46 (1893).
7. *A. pallescens*, Tepper, Trans. Roy. Soc. S. Austral. Vol. 19, p. 152 (1895) (Victoria).

## 20. GENUS ANALLACTA, NOV. GEN.

**Allacta** (part). Saussure & Zehntner, in Grandidier, Hist. Nat. Madag. Orth. Vol. 1, p. 45 (1895).

**Characters.** — Large coriaceous insects, superficially resembling species of Periplanetine genera, such as *Methana* and *Periplaneta*. Marginal field of tegmina very broad. Wings sometimes reduced, median vein sometimes ramose, sometimes absent, costals more numerous than in the preceding genus, rather irregular, ulnar vein ramose. Supra-anal lamina triangular, produced. Femora strongly armed.

**Geographical distribution of species.** — Madagascar.

1. *A. lobata*, Saussure, Soc. Ent. Zurich, Vol. 6, p. 25 (1891) (Madagascar).  
*A. lobata*, Saussure & Zehntner, in Grandidier, Hist. Nat. Madag. Orth. Vol. 1, p. 46, pl. 1, f. 4 (1895).
2. *A. undata*, Saussure & Zehntner, ibidem, p. 47, pl. 1, f. 5 (1895) (Madagascar).
3. *A. brachyptera*, Saussure & Zehntner, ibidem, p. 49, pl. 1, f. 6 (1895) (Madagascar).
4. *A. abbreviata*, Saussure & Zehntner, ibidem, p. 50 (1895) (Madagascar).
5. ***A. methanoides*, nov. sp.** (1) (Madagascar). — Plate 2, Fig. 8.

**21. GENUS CERATINOPTERA, BRUNNER VON WATTENWYL**

**Ceratinoptera.** Brunner von Wattenwyl, Nouv. Syst. des Blatt. p. 75 (1865).

**Balta.** Tepper, Trans. Roy. Soc. S. Austral. Vol. 17, p. 40 (1893).

**Characters.** — Tegmina very variable in size, sometimes reaching the apex of the abdomen, sometimes much reduced, always lanceolate in the male, sometimes quadrate in the female. Wings well-developed, reduced or rudimentary, ulnar vein simple, occasionally bifurcate, never ramose. Supra-anal lamina of male usually triangular. Femora strongly armed.

**Geographical distribution of species.** — All the regions of the world except the Palearctic.

1. *C. dimidiata*, Gerstäcker, Arch. f. Naturg. Vol. 35, p. 205 (1869) (East Africa).
2. *C. abyssinica*, Saussure, Mém. Soc. Sc. Phys. Nat. Genève, Vol. 23, p. 93 (1873) (Abyssinia).
3. *C. variegata*, Schulthess-Schindler, Bull. Soc. Vaudoise Sc. Nat. Vol. 35, p. 191, pl. 8, f. 1 (1899) (East Africa, Delagoa Bay, Transvaal).  
*C. hottentota*, Saussure, Abh. Senckenb. Ges. Frankf. Vol. 21, p. 575 (1899).  
*Aphlebia transvaaliensis*, Kirby, Ann. Mag. Nat. Hist. Lond. (7), Vol. 5, p. 278 (1900).
4. *C. portalensis*, Giglio-Tos, Boll. Mus. Zool. Univ. Torino, Vol. 22, n. 556, p. 1 (1907) (Uganda).
5. *C. bimaculata*, Shelford, Wiss. Ergebn. Schwed. Zool. Exp. Kilimandjaro etc., pt. 17. Orthoptera Blattodea, p. 23 (1907) (German E. Africa).
6. *C. usambarensis*, nom. nov. (German E. Africa).  
*C. castanea*, Shelford, ibidem, p. 23 (1907).
7. *C. sjöstedti*, Shelford, ibidem, p. 23, pl. 3, f. 16-17 (1907) (German E. Africa).
8. *C. variabilis*, Shelford, ibidem, p. 24 (1907) (Kilimandjaro).
9. *C. perpulchra*, Shelford, ibidem, p. 25, pl. 2, f. 2, pl. 3, f. 13 (1907) (Kilimandjaro).
10. *C. ovata*, Shelford, ibidem, p. 25 (1907) (German E. Africa).
11. *C. bolivari*, Adelung, Ann. Mus. Zool. St. Petersburg. Vol. 9, p. 431 (1905) (Gallaland).
12. *C. schulthessi*, Kirby, Syn. Cat. Orth. Vol. 1, p. 103 (1904) (South, West and East Africa,? Ceylon).  
*Temnopteryx ferruginea*, Schulthess-Schindler, Ann. Mus. Stor. Nat. Genova, Vol. 39, p. 165 (1898).
13. *C. inscripta*, Walker, Cat. Blatt. Brit. Mus. p. 145 (1868) (Natal). — Plate 2, Fig. 6.
14. *C. madecassa*, Saussure, Mém. Soc. Sc. Phys. Nat. Genève, Vol. 20, p. 238, pl. 3, f. 19 (1869) (Madagascar).
15. *C. abbreviata*, Saussure, ibidem. Vol. 17, p. 149, pl. 1, f. 13 (1864) (Réunion Island).
16. *C. martini*, Bolivar, Ann. Soc. Ent. Fr. p. 292, pl. 10, f. 6 (1897) (Trichinopoly, India).
17. *C. fulva*, Brunner von Wattenwyl, Nouv. Syst. des Blatt. p. 85 (1865) (Java).
18. *C. sundaica*, Fritze, Rev. Suisse Zool. Vol. 7, p. 338 (1900) (Java).
19. *C. coulouiana*, Saussure, Mém. Soc. Sc. Phys. Nat. Genève, Vol. 17, p. 150, pl. 1, f. 14 (1864) (Australia).  
*Paratemnopteryx blattoides*, Tepper (♀), Trans. Roy. Soc. S. Austral. Vol. 19, p. 149 (1895).

(1) *A. methanoides*, nov. sp. — ♂. Allied to *A. undata*, Saussure & Zehntner, but disc of pronotum unmarked. Lateral margins of pronotum and mediastinal area of tegmina testaceous. Median vein of wing a branch of the radial vein. Supra-anal lamina triangular, produced, apex not emarginate, sub-genital lamina transverse, widely emarginate. — Total length 20 mm.; length of tegmina 15.5 mm.; pronotum 5.4 mm. × 8 mm. — Antongil Bay, N. E. Madagascar.

20. *C. platysoma*, Walker, Cat. Blatt. Brit. Mus. p. 111 (1868) (Western Australia).
21. *C. epilamproides*, Tepper, Trans. Roy. Soc. S. Austral. Vol. 17, p. 40 (1893) (Kangaroo Is., Australia).
22. *C. ferruginea*, Tepper, ibidem, Vol. 19, p. 148 (1895) (Victoria)
23. *C. texensis*, Saussure & Zehntner, Biol. Centr. Amer. Orth. Vol. 1, p. 52, pl. 3, f. 31 (1893) (Texas, New Mexico).
24. *C. lutea*, Saussure & Zehntner, ibidem, p. 48 (1893) (Georgia, U. S. America).
25. *C. tarasca*, Saussure, Rev. Zool. (2), Vol. 14, p. 164 (1862) (Mexico).
26. *C. otomia*, Saussure, ibidem, Vol. 20, p. 98 (1868) (Mexico).
27. *C. limbata*, Saussure, ibidem, p. 98 (1868) (Mexico).
28. *C. sumichrasti*, Saussure, ibidem, p. 97 (1868) (Mexico).
29. *C. olmeca*, Saussure, ibidem, p. 354 (1868) (Mexico).
30. *C. kaupiana*, Saussure, Mém. Soc. Sc. Phys. Nat. Genève, Vol. 23, p. 92 (1873) (Mexico).
31. *C. nitida*, Saussure & Zehntner, Biol. Centr. Amer. Orth. Vol. 1, p. 53, pl. 4, f. 31, 32 (1893) (Mexico).
32. *C. guatemalae*, Saussure & Zehntner, ibidem, p. 53, pl. 4, f. 27, 28 (1893) (Guatemala).
33. *C. fissa*, Saussure & Zehntner, ibidem, p. 54, pl. 4, f. 29, 30 (1893) (Guatemala).
34. *C. lobipennis*, Saussure, Mission Sc. Mexique, Orth. p. 26 (1870) (Brazil).
35. *C. facies*, Walker, Cat. Blatt. Brit. Mus. p. 102 (1868) (? Brazil).
36. *C. picta*, Brunner von Wattenwyl, Nouv. Syst. des Blatt. p. 76, pl. 1, f. 4 (1865) (Brazil).
37. *C. castanea*, Brunner von Wattenwyl, ibidem, p. 77 (1865) (Brazil).
38. *C. ardua*, Giglio-Tos, Boll. Mus. Zool. Univ. Torino, Vol. 12, n. 302, p. 3 (1897) (Argentine).
39. *C. continua*, Giglio-Tos, ibidem, p. 4 (1897) (Argentine).
40. *C. peruviana*, Brunner von Wattenwyl, Nouv. Syst. des Blatt. p. 78 (1865) (Peru).
41. *C. dimorpha*, Bolivar, An. Soc. Esp. Hist. Nat. Vol. 10, p. 464, pl. 8, f. 4 (1881) (Peru).
42. *C. snodgrassi*, McNeill, Proc. Acad. Nat. Sc. Wash. Vol. 3, p. 493 (1901) (Galapagos Islands).
43. *C. incommoda*, Kirby, Journ. Linn. Soc. Lond. Vol. 20, p. 533 (1894) (Fernando Noronha).
44. *C. diaphana*, Fabricius, Ent. Syst. Vol. 2, p. 11 (1792) (West Indies).
45. *C. poeyi*, Saussure, Rev. Zool. (2), Vol. 14, p. 164 (1862) (Cuba).
46. *C. porcellana*, Saussure, ibidem, p. 164 (1862) (Cuba).

#### Doubtful species :

47. *C. pygmaea*, Beauvois, Ins. Afr. Amér. p. 184, Orth. pl. 1b, f. 9 (1805) (Haiti).
48. *C. discalis*, Walker, Cat. Blatt. Brit. Mus. p. 111 (1868) (West Australia).
49. *C. latipes*, Walker, ibidem, p. 165 (1868) (St. Helena, Sierra Leone).

## 22. GENUS PARACERATINOPTERA, SAUSSURE

**Paraceratinoptera.** Saussure, Rev. Zool. (2), Vol. 20, p. 357 (1868); Mission Sc. Mexique, Orth. p. 87 (1870).

**Characters.** — Differs from *Ceratinoptera*, Brunner von Wattenwyl, in the absence of arolia between the tarsal claws. Tegmina corneous, lanceolate, as long as, or shorter than, the body. Wings small, ulnar vein bifurcate. Supra-anal lamina triangular in both sexes, sub-genital lamina of male with styles.

**Geographical distribution of species.** — Central America.

1. *P. nahua*, Saussure, Rev. Zool. (2), Vol. 20, p. 357 (1868) (Mexico, Guatemala).
2. *P. dohrniana*, Saussure & Zehntner, Biol. Centr. Amer. Orth. Vol. 1, p. 49 (1893) (Guatemala).

## 23. GENUS ANISOPYGIA, SAUSSURE

**Anisopygia.** Saussure, Soc. Ent. Zurich, Vol. 8, p. 57 (1893); Saussure & Zehntner, Biol. Centr. Amer. Orth. Vol. 1, p. 49 (1893).

**Characters.** — Allied to *Ceratinoptera*, Brunner von Wattenwyl. Antennæ slightly incrassated. Pronotum not covering vertex of head. Tegmina corneous, abbreviated. Wings rudimentary. Penultimate abdominal tergite strongly sinuate. Supra-anal lamina in the male divided almost to the base into two unequal lobes; sub-genital lamina in the male asymmetrical with two unequal styles.

**Geographical distribution of species.** — Guatemala.

1. *A. jocosicluna*, Saussure, Soc. Ent. Zurich, Vol. 8, p. 57 (1893) (Guatemala). — **Plate 2, Fig. 4, 5.**  
*A. jocosicluna*, Saussure & Zehntner, Biol. Centr. Amer. Orth. Vol. 1, p. 50, pl. 1, f. 25, 26 (1893).

## 24. GENUS TEMNOPTERYX, BRUNNER VON WATTENWYL

**Temnopteryx.** Brunner von Wattenwyl, Nouv. Syst. des Blatt. p. 83 (1865).

**Characters.** — The same as in *Ceratinoptera*, but the tegmina in both sexes quadrate or obliquely truncate, not extending beyond the second abdominal tergite. Wings usually present, but rudimentary, equalling the tegmina in length.

**Geographical distribution of species.** — India, Philippines, Samoa, Africa, Madagascar.

1. *T. brachyptera*, Bolivar, An. Soc. Esp. Hist. Nat. Vol. 19, p. 301, pl. 1, f. 2 (1890) (North Africa).
2. *T. abyssinica*, Saussure & Zehntner, in Grandidier, Hist. Nat. Madag. Orth. Vol. 1, p. 51, foot-note (1895) (Massowa, Abyssinia). — **Plate 2, Fig. 3.**  
*T. saussurei*, Bolivar, Ann. Soc. Ent. Fr. Vol. 66, p. 292 (1897).
3. *T. brunneri*, Adelung, Ann. Mus. Zool. St-Petersb. Vol. 9, p. 433 (1905) (Abyssinia).
4. *T. caffra*, Saussure, Abh. Senckenb. Ges. Frankfurt, Vol. 21, p. 577 (1899) (East Africa).
5. *T. ectobioides*, Shelford, Wiss. Ergebn. Schwed. Zool. Exp. Kilimandjaro etc., pt. 17, Orthoptera, Blattodea, p. 26, pl. 2, f. 12 (1907) (German E. Africa).
6. *T. affinis*, Shelford, ibidem, p. 27 (1907) (Meru, Kilimandjaro).
7. *T. rufa*, Shelford, ibidem, p. 27 (1907) (Kilimandjaro).
8. *T. nana*, Saussure, Mém. Soc. Sc. Phys. Nat. Genève, Vol. 20, p. 241 (1869) (Senegal).
9. *T. phalerata*, Saussure, Rev. Zool. (2), Vol. 16, p. 309 (1864) (South Africa).
10. *T. inconspicua*, Brunner von Wattenwyl, Nouv. Syst. des Blatt. p. 85 (1865) (Cape Town).
11. *T. elizabethae*, Kirby, Ann. Mag. Nat. Hist. (7), Vol. 5, p. 279 (1900) (Cape Colony).
12. *T. sakalava*, Saussure, Soc. Ent. Zurich, Vol. 6, p. 25 (1891) (Madagascar, Zanzibar).  
*T. sakalava*, Saussure & Zehntner, in Grandidier, Hist. Nat. Madag. Orth. Vol. 1, p. 51, pl. 1, f. 16 (1895).
13. *T. panteli*, Saussure, Soc. Ent. Zurich, Vol. 6, p. 25 (1891) (Madagascar).  
*T. panteli*, Saussure & Zehntner, in Grandidier, Hist. Nat. Madag. Orth. Vol. 1, p. 52, pl. 1, f. 15 (1895).
14. *T. madecassa*, Saussure & Zehntner, in Grandidier, Hist. Nat. Madag. Orth. Vol. 1, p. 53 (1895) (Madagascar).
15. *T. indica*, Saussure, Mém. Soc. Sc. Phys. Nat. Genève, Vol. 17, p. 130 (1864) (Pondicherry, India).
16. *T. truncata*, Saussure, ibidem, p. 148, pl. 1, f. 12 (1864) (Pondicherry, India).
17. *T. alca*, Bolivar, Ann. Soc. Ent. Fr. p. 293, pl. 10, f. 7 (1897) (Trichinopoly, India).
18. *T. bicolor*, Bolivar, ibidem, p. 293 (1897) (Trichinopoly, India).
19. *T. dimidiatipes*, Bolivar, An. Soc. Esp. Hist. Nat. Vol. 19, p. 300, pl. 1, f. 1 (1890) (Philippines).
20. *T. obscura*, Saussure, Mém. Soc. Sc. Phys. Nat. Genève, Vol. 20, p. 241 (1869) (Samoa).
21. *T. abbreviata*, Tepper, Trans. Roy. Soc. S. Austral. Vol. 19, p. 164 (1895) (Victoria).

## 25. GENUS LOBOPTERA, BRUNNER VON WATTENWYL

**Loboptera.** Brunner von Wattenwyl, *Nouv. Syst. des Blatt.* p. 79 (1865).

**Characters.** — Ocelli absent. Vertex of head not covered by the pronotum. Tegmina lobiform and wings absent in both sexes. Abdomen broad. Supra-anal lamina produced, obtuse in the male, emarginate in the female. Sub-genital lamina in the male triangular, obtuse, without styles, in the female ample, emarginate. Femora strongly armed, rather compressed; an arolium present between the tarsal claws.

**Geographical distribution of species.** — Cosmopolitan.

1. *L. decipiens*, Germar, *Reise in Dalmatien*, p. 249 (1817) (Southern Europe, Madeira, Asia Minor).
2. *L. fortunata*, Krauss, *Zool. Anz.* Vol. 15, p. 165 (1892) (Canary Islands).
3. *L. maroccana*, Bolivar, *Act. Soc. Esp. Hist. Nat.* Vol. 23, p. 84 (1894) (Morocco).
4. *L. minor*, Bolivar, *ibidem*, p. 85 (1894) (Morocco).
5. *L. tartara*, Saussure, in Fedtschenko, *Reise in Turkestan*, *Orth.* p. 8, pl. 1, f. 5 (1874) (Turkestan).
6. *L. indica*, Brunner von Wattenwyl, *Nouv. Syst. des Blatt.* p. 82 (1865) (India).
7. *L. peculiaris*, Burr, *Bull. Liverpool Mus.* Vol. 2, p. 42 (1900); *Nat. Hist. Sokotra*, p. 415, pl. 25, f. 8 (1903) (Sokotra). — **Plate 2, Fig. 9.**
8. *L. nitida*, Shelford, *Wiss. Ergebn. Schwed. Zool. Exp. Kilimandjaro etc.* pt. 17, *Orthoptera, Blattodea*, p. 28 (1907) (German E. Africa).
9. *L. duplovittata*, Saussure, *Soc. Ent. Zurich*, Vol. 6, p. 25 (1891) (Madagascar).
10. *L. trivittata*, Erichson, *Arch. f. Naturg.* Vol. 8, p. 248 (1842) (Tasmania).
11. *L. halmaturina*, Tepper, *Trans. Roy. Soc. S. Austral.* Vol. 17, p. 36 (1893) (Kangaroo Isl., Australia).
12. *L. duodecimsignata*, Tepper, *ibidem*, p. 36 (1893) (Adelaide, Australia).
13. *L. circumcincta*, Tepper, *ibidem*, p. 37 (1893) (Kangaroo Isl., Australia).
14. *L. tricolor*, Tepper, in Horn, *Exped. Centr. Austral.* Vol. 2, p. 357 (1896) (Central Australia).
15. *L. extranea*, Perkins, *Fauna Hawaii. Orth.* p. 6 (1899) (Hawaiian Islands).
16. *L. americana*, Scudder, *Proc. Acad. Nat. Sc. Davenport*, Vol. 8, p. 93, pl. 2, f. 4 (1899) (Arizona).
17. *L. schaefferi*, Rehn, *Psyche*, Vol. 11, p. 72 (1904) (South Texas).
18. *L. annulicornis*, Saussure & Zehntner, *Biol. Centr. Amer. Orth.* Vol. 1, p. 54 (1893) (Mexico).
19. *L. aequalis*, Walker, *Cat. Derm. Salt.* Vol. 5, *Suppl. Blatt.* p. 21 (1871) (Brazil).
20. *L. laurenziana*, Giglio-Tos, *Boll. Mus. Zool. Univ. Torino*, Vol. 12, n. 302, p. 2 (1897) (Argentine).
21. *L. borellii*, Giglio-Tos, *ibidem*, p. 3 (1897) (Argentine, Bolivia).
22. *L. araucana*, Saussure, *Rev. Zool. (2)*, Vol. 21, p. 109 (1869) (Chili).

## 26. GENUS PARALOBOPTERA, SAUSSURE

**Paraloboptera.** Saussure, *Mission Sc. Mexique, Orth.* p. 86 (1870).

**Characters.** — Differs only from *Loboptera*, Brunner von Wattenwyl, in the absence of arolia between the tarsal claws.

**Geographical distribution of species.** — South America and Abyssinia.

1. *P. unicolor*, Saussure, *Rev. Zool. (2)*, Vol. 20, p. 100 (1868) (Buenos Aires).
2. *P. ras*, Adelung, *Ann. Mus. Zool. St-Petersb.* Vol. 9, p. 437 (1905) (Abyssinia).

## 27. GENUS APTEROBLATTA, SHELFORD

**Apteroblatta.** Shelford, *Wiss. Ergebn. Schwed. Zool. Exp. Kilimandjaro etc.*, pt. 17, *Orthoptera, Blattodea*, p. 28 (1907).



**Characters.** — Allied to *Loboptera*, Brunner von Wattenwyl, but tegmina entirely absent in both sexes. Arolia present.

**Geographical distribution of species.** — East Africa, Abyssinia.

1. *A. perplexa*, Shelford, Wiss. Ergebn. Schwed. Zool. Exp. Kilimandjaro etc., pt. 17. Orthoptera, Blattodea, p. 28, pl. 2, f. 3, 13 (1907) (Kilimandjaro).
2. *A. adelungi*, Shelford, ibidem, p. 29 (1907) (Abyssinia).

## 28. GENUS ATTAPHILA, WHEELER

**Attaphila.** Wheeler, The Amer. Natur. Vol. 34, p. 856-862 (1900).

**Characters.** — Body oval. Head strongly transverse, towards the middle as broad as long. Antennæ with the first joint large, dilated gradually towards the apex and slightly curved, the second small, sub-quadrate, the third and fourth short and transverse, the following increasing distally in length. Eyes very narrow and reduced. Pronotum barely covering vertex of head, posteriorly truncate. Tegmina in male sub-quadrate, with internal posterior angle rounded, reaching to end of the metanotum; absent in the female. Wings absent. Abdomen depressed, broad; penultimate tergite narrow transverse; supra-anal lamina triangular produced in the male, in the female trapezoidal with the posterior border emarginate; sub-genital lamina of male with one style. Cerci short, rounded, not segmented. Legs short, robust, femora armed beneath, tibiæ strongly, spined, tarsal claws with arolia. All the species inhabit ants' nests.

**Geographical distribution of species.** — Southern United States, South America.

1. *A. fungicola*, Wheeler, The Amer. Natur. Vol. 34, p. 856-862, f. 3-5 (1900) (Texas).
2. *A. bergi*, Bolivar, Comun. Mus. Nac. Buenos Aires, Vol. 1, p. 334 (1901) (Argentine, Uruguay). — **Plate 2, Fig. 11.**
3. *A. sexdentis*, Bolivar, Mitt. Schweiz. Ent. Ges. Vol. 11, p. 137 (1905) (Rio Grande do Sul, Brazil).
4. *A. schuppi*, Bolivar, ibidem, p. 138 (1905) (Porto Alegre, Brazil).
5. *A. aptera*, Bolivar, ibidem, p. 137 (1905) (Colombia).

### INDEX

Pages.		Pages.		Pages.
19	abbreviata, Sauss. & Zehnt. ( <i>g. Anal-lacta</i> )	14	adpersicollis, Stål ( <i>g. Phyllo-dromia</i> )	15
19	abbreviata, Sauss. ( <i>g. Ceratinoptera</i> )	8	adusta, Caud. ( <i>g. Ischnoptera</i> )	14
21	abbreviata, Tepp. ( <i>g. Temnopteryx</i> )	14	adversa, Sauss. & Zehnt. ( <i>g. Phyllo-dromia</i> )	4
18	<b>Abrodiæta</b> (genus), Brunn. v. W.	6	aegrota, Gerst. ( <i>g. Ischnoptera</i> )	11
19	abyssinica, Sauss. ( <i>g. Ceratinoptera</i> )	22	aequalis, Walk. ( <i>g. Loboptera</i> )	6
21	abyssinica, Sauss. & Zehnt. ( <i>g. Temnopteryx</i> )	12	aequatorialis, Wern. ( <i>g. Phyllo-dromia</i> )	21
15	acolhua, Sauss. ( <i>g. Phyllo-dromia</i> )	4	affinis, Burm. ( <i>g. Pseudomops</i> )	21
23	adelungi, Shelf. ( <i>g. Apteroblatta</i> )	4	affinis, Walk. ( <i>g. Pseudomops</i> )	13
16	adimonalis, Walk. ( <i>g. Lupparia</i> )	14	affinis, Sauss. ( <i>g. Phyllo-dromia</i> )	18
		21	affinis, Shelf. ( <i>g. Temnopteryx</i> )	9
			alaris, Sauss. & Zehnt. ( <i>g. Phyllo-dromia</i> )	
			albida, Sauss. ( <i>g. Phyllo-dromia</i> )	
			albobstriata, Shelf. ( <i>g. Pseudomops</i> )	
			albovariegata, Shelf. ( <i>g. Phyllo-dromia</i> )	
			albovittatum, Sauss. ( <i>g. Ellipsoidion</i> )	
			alca, Bol. ( <i>g. Temnopteryx</i> )	
			aliena, Brunn. v. W. ( <i>g. Phyllo-dromia</i> )	
			<b>Allacta</b> (genus), Sauss. & Zehnt.	
			alluaudi, Shelf. ( <i>g. Piroblatta</i> )	

	Pages.		Pages.		Pages.
alluaudi, Bol. ( <i>g. Phyllostromia</i> )	11	beauvoisii, Walk. ( <i>g. Phyllostromia</i> )	11	cassiphila, Rochebr. ( <i>g. Phyllostromia</i> )	11
alluaudi, Bol. ( <i>g. Desmosia</i> )	16	bergi, Bol. ( <i>g. Attaphila</i> )	23	castanea, Sauss. ( <i>g. Ischnoptera</i> )	8
alluaudi, Shelf. ( <i>g. Liosilpha</i> )	16	bergrothi, Griff. ( <i>g. Ischnoptera</i> )	8	castanea, Blanch. ( <i>g. Ischnoptera</i> )	8
alternans, Serv. ( <i>g. Pseudophyllostromia</i> )	17	bicincta, Walk. ( <i>g. Phyllostromia</i> )	15	castanea, Brunn. v. W. ( <i>g. Phyllostromia</i> )	13
americana, Sauss. ( <i>g. Pseudomops</i> )	4	bicolor, Shelf. ( <i>g. Pseudomops</i> )	4	castanea, Brunn. v. W. ( <i>g. Ceratinoptera</i> )	20
americana, Scudd. ( <i>g. Lobopectera</i> )	22	bicolor, Tepp. ( <i>g. Ellipsoidion</i> )	6	castaneum, Shelf. ( <i>g. Ellipsoidion</i> )	6
amœna, Sauss. ( <i>g. Pseudomops</i> )	4	bicolor, Beauv. ( <i>g. Ischnoptera</i> )	8	cavernicola, Shelf. ( <i>g. Ischnoptera</i> )	7
amplectens, Walk. ( <i>g. Phyllostromia</i> )	14	bicolor, Sauss. ( <i>g. Caloblatta</i> )	10	centralis, Walk. ( <i>g. Ischnoptera</i> )	7
amplicollis, Gerst. ( <i>g. Phyllostromia</i> )	11	bicolor, Bol. ( <i>g. Temnopteryx</i> )	21	centralis, Gerst. ( <i>g. Phyllostromia</i> )	11
<b>Anallacta</b> (genus), Shelf.	18	biligata, Walk. ( <i>g. Ischnoptera</i> )	7	<b>Ceratinoptera</b> (genus), Brunn.	
anastomosa, Tepp. ( <i>g. Ischnoptera</i> )	7	bilunata, Sauss. ( <i>g. Ischnoptera</i> )	8	v. W.	19
anceps, Krauss. ( <i>g. Phyllostromia</i> )	14	bimaculata, Gerst. ( <i>g. Ischnoptera</i> )	6	cercalis, Walk. ( <i>g. Phyllostromia</i> )	14
angusta, Walk. ( <i>g. Pseudomops</i> )	4	bimaculata, Shelf. ( <i>g. Ceratinoptera</i> )	19	ceylanica, Sauss. ( <i>g. Phyllostromia</i> )	12
angustata, Latr. ( <i>g. Pseudophyllostromia</i> )	17	binotata, Brun. ( <i>g. Phyllostromia</i> )	15	chichimeca, Sauss. & Zehnt. ( <i>g. Phyllostromia</i> )	15
angustefasciata, Wern. ( <i>g. Phyllostromia</i> )	12	bipunctata, Walk. ( <i>g. Pseudophyllostromia</i> )	17	<b>Chrastoblatta</b> (genus), Sauss. & Zehnt.	9
<b>Anisopygia</b> (genus), Sauss.	21	birmanica, Brunn. v. W. ( <i>g. Phyllostromia</i> )	13	cincta, Burm. ( <i>g. Pseudomops</i> )	4
annulicornis, Burm. ( <i>g. Pseudomops</i> )	4	bisignata, Brunn. v. W. ( <i>g. Phyllostromia</i> )	13	cincta, Fabr. ( <i>g. Ischnoptera</i> )	8
annulicornis, Sauss. & Zehnt. ( <i>g. Ischnoptera</i> )	8	bitaeniata, Stål ( <i>g. Phyllostromia</i> )	12	cinnamomea, Gerst. ( <i>g. Ischnoptera</i> )	6
annulicornis, Walk. ( <i>g. Phyllostromia</i> )	14	bitaeniata, Sauss. ( <i>g. Allacta</i> )	18	circumcincta, Stål ( <i>g. Pseudothyrsocera</i> )	5
annulicornis, Sauss. & Zehnt. ( <i>g. Lobopectera</i> )	22	bivittata, Thom. ( <i>g. Phyllostromia</i> )	11	circumcincta, Tepp. ( <i>g. Lobopectera</i> )	22
annulifera, Walk. ( <i>g. Phyllostromia</i> )	12	bivittata, Serv. ( <i>g. Phyllostromia</i> )	11	circumclusa, Stål ( <i>g. Pseudothyrsocera</i> )	5
anomala, Sauss. ( <i>g. Liosilpha</i> )	16	blattoides, Tepp. ( <i>g. Paratemnopteryx</i> )	9	clara, Walk. ( <i>g. Ischnoptera</i> )	8
antiguensis, Sauss. & Zehnt. ( <i>g. Phyllostromia</i> )	15	blattoides, Sauss. ( <i>g. Phyllostromia</i> )	11	cognata, Brunn. v. W. ( <i>g. Phyllostromia</i> )	12
<b>Apolyta</b> (genus), Brunn. v. W.	5	bocagii, Bol. ( <i>g. Ischnoptera</i> )	6	colligata, Walk. ( <i>g. Phyllostromia</i> )	13
aptera, Bol. ( <i>g. Attaphila</i> )	23	bolivari, Adel. ( <i>g. Ceratinoptera</i> )	19	concinna, Walk. ( <i>g. Pseudomops</i> )	4
<b>Apteroblatta</b> (genus), Shelf.	22	bolliana, Sauss. & Zehnt. ( <i>g. Ischnoptera</i> )	8	concinna, Walk. ( <i>g. Phyllostromia</i> )	14
araucana, Sauss. ( <i>g. Lobopectera</i> )	22	borealis, Sauss. ( <i>g. Ischnoptera</i> )	7	conformis, Sauss. & Zehnt. ( <i>g. Ischnoptera</i> )	8
arborifera, Walk. ( <i>g. Phyllostromia</i> )	13	borealis, Brunn. v. W. ( <i>g. Ischnoptera</i> )	8	conjuncta, Walk. ( <i>g. Phyllostromia</i> )	14
arcta, Brunn. v. W. ( <i>g. Ischnoptera</i> )	7	borellii, Gig. Tos. ( <i>g. Phyllostromia</i> )	14	conradi, Shelf. ( <i>g. Phyllostromia</i> )	11
ardua, Gig.-Tos. ( <i>g. Ceratinoptera</i> )	20	borellii, Gig. Tos. ( <i>g. Lobopectera</i> )	22	consobrina, Sauss. ( <i>g. Ischnoptera</i> )	8
arundinicola, Wern. ( <i>g. Phyllostromia</i> )	12	bouvieri, Shelf. ( <i>g. Piroblatta</i> )	9	consobrina, Brunn. v. W. ( <i>g. Phyllostromia</i> )	14
asiatica, Pallas. ( <i>g. Phyllostromia</i> )	15	brachyptera, Sauss. & Zehnt. ( <i>g. Anallacta</i> )	19	conspicienda, Bol. ( <i>g. Phyllostromia</i> )	12
<b>Attaphila</b> (genus), Bol.	23	brachyptera, Bol. ( <i>g. Temnopteryx</i> )	21	constricta, Sauss. ( <i>g. Phyllostromia</i> )	11
aurantiaca, Sauss. & Zehnt. ( <i>g. Pseudomops</i> )	4	brasiliensis, Brunn. v. W. ( <i>g. Ischnoptera</i> )	8	contigua, Walk. ( <i>g. Phyllostromia</i> )	14
aurantium, Sauss. ( <i>g. Ellipsoidion</i> )	5	brevipennis, Sauss. ( <i>g. Ischnoptera</i> )	8	contingens, Walk. ( <i>g. Phyllostromia</i> )	13
australe, Sauss. ( <i>g. Ellipsoidion</i> )	5	brevipes, Walk. ( <i>g. Ischnoptera</i> )	7	continua, Walk. ( <i>g. Ischnoptera</i> )	6
australiae, Brunn. v. W. ( <i>g. Ischnoptera</i> )	7	brunneonigra, Tepp. ( <i>g. Ischnoptera</i> )	7	continua, Gig.-Tos. ( <i>g. Ceratinoptera</i> )	20
australis, Sauss. ( <i>g. Ischnoptera</i> )	7	brunneri, Sauss. ( <i>g. Pseudomops</i> )	4	contraria, Tepp. ( <i>g. Ischnoptera</i> )	7
australis, Sauss. ( <i>g. Paratemnopteryx</i> )	9	brunneri, Shelf. ( <i>g. Phyllostromia</i> )	13	cordofana, Brunn. v. W. ( <i>g. Phyllostromia</i> )	12
azteca, Sauss. ( <i>g. Ischnoptera</i> )	8	brunneri, Adel. ( <i>g. Temnopteryx</i> )	21	corommensis, Schulth. ( <i>g. Phyllostromia</i> )	12
azteca, Sauss. & Zehnt. ( <i>g. Phyllostromia</i> )	15	brunneriana, Sauss. ( <i>g. Phyllostromia</i> )	15	couloniana, Sauss. ( <i>g. Ischnoptera</i> )	7
		burri, Shelf. ( <i>g. Pseudomops</i> )	4	couloniana, Sauss. ( <i>g. Ceratinoptera</i> )	19
		caffra, Sauss. ( <i>g. Temnopteryx</i> )	21		
<b>Balta</b> (genus), Tepp.	19	<b>Caloblatta</b> (genus), Sauss.	10		
basalis, Gerst. ( <i>g. Ischnoptera</i> )	6	capensis, Sauss. ( <i>g. Phyllostromia</i> )	11		
		capitata, Sauss. ( <i>g. Phyllostromia</i> )	11		

Pages.		Pages.		Pages.
	crassivenosa, Bol. ( <i>g. Allacta</i> )	18		
	crinicornis, Burm. ( <i>g. Pseudomops</i> )	4		
	crinicornis, Brunn. v. W. ( <i>g. Pseudomops</i> )	4		
	cubensis, Sauss. ( <i>g. Phyllochromia</i> )	11		
	curta, Walk. ( <i>g. Liosilpha</i> )	16		
	curvinervis, Sauss. & Zehnt. ( <i>g. Phyllochromia</i> )	13		
	deceptura, Walk. ( <i>g. Pseudomops</i> )	4		
	decipiens, Germ. ( <i>g. Lobopecta</i> )	22		
	decoratum, Tepp. ( <i>g. Ellipsidion</i> )	6		
	delicatula, Guér. ( <i>g. Phyllochromia</i> )	15		
	delta, Kirby ( <i>g. Phyllochromia</i> )	11		
	depressum, Walk. ( <i>g. Ellipsidion</i> )	6		
	deprivata, Walk. ( <i>g. Phyllochromia</i> )	11		
	deropeltiformis, Brunn. v. W. ( <i>g. Ischnoptera</i> )	7		
	desertorum, Adel. ( <i>g. Phyllochromia</i> )	12		
	<b>Desmosia</b> (genus), Bol.	15		
	detersa, Walk. ( <i>g. Phyllochromia</i> )	15		
	diaphana, Fabr. ( <i>g. Ceratoptera</i> )	20		
	dilatata, Sauss. ( <i>g. Phyllochromia</i> )	15		
	diluta, Sauss. ( <i>g. Phyllochromia</i> )	12		
	dimidiata, Sauss. ( <i>g. Chrostoblatta</i> )	9		
	dimidiata, Gerst. ( <i>g. Ceratoptera</i> )	19		
	dimidiatipes, Bol. ( <i>g. Temnopteryx</i> )	21		
	dimorpha, Bol. ( <i>g. Ceratoptera</i> )	20		
	discalis, Walk. ( <i>g. Ceratoptera</i> )	20		
	discicollis, Burm. ( <i>g. Pseudomops</i> )	4		
	divisa, Sauss. & Zehnt. ( <i>g. Ischnoptera</i> )	7		
	dohrniana, Sauss. & Zehnt. ( <i>g. Paraceratoptera</i> )	20		
	dubia, Sauss. ( <i>g. Pseudomops</i> )	4		
	duodecimsignata, Tepp. ( <i>g. Lobopecta</i> )	22		
	duplovittata, Sauss. ( <i>g. Lobopecta</i> )	22		
	<b>Duryodana</b> (genus), Kirby	15		
	ectobioides, Sauss. ( <i>g. Ischnoptera</i> )	7		
	ectobioides, Shelf. ( <i>g. Temnopteryx</i> )	21		
	elegans, Walk. ( <i>g. Phyllochromia</i> )	13		
	elizabethae, Kirby ( <i>g. Temnopteryx</i> )	21		
	<b>Ellipsidion</b> (genus), Sauss.	5		
	elongata, Beauv. ( <i>g. Ischnoptera</i> )	8		
	epilamproides, Tepp. ( <i>g. Ceratoptera</i> )	20		
	erythrina, Walk. ( <i>g. Ischnoptera</i> )	8		
	<b>Euphyllochromia</b> (subgenus), Shelf.	17		
	excavata, Shelf. ( <i>g. Ischnoptera</i> )	7		
	excisa, Bol. ( <i>g. Ischnoptera</i> )	8		
	extenuata, Walk. ( <i>g. Phyllochromia</i> )	11		
	extranea, Perk. ( <i>g. Lobopecta</i> )	22		
	facies, Walk. ( <i>g. Ceratoptera</i> )	20		
	fasciata, Brunn. v. W. ( <i>g. Phyllochromia</i> )	14		
	fasciatella, Sauss. ( <i>g. Pseudophyllochromia</i> )	17		
	fasciceps, Walk. ( <i>g. Phyllochromia</i> )	12		
	feae, Shelf. ( <i>g. Phyllochromia</i> )	13		
	femoralis, Walk. ( <i>g. Pseudomops</i> )	4		
	femoratum, Brunn. v. W. ( <i>g. Ellipsidion</i> )	5		
	ferrea, Sauss. & Zehnt. ( <i>g. Phyllochromia</i> )	12		
	ferruginea, Brunn. v. W. ( <i>g. Phyllochromia</i> )	13		
	ferruginea, Tepp. ( <i>g. Ceratoptera</i> )	20		
	ferruginea, Schulth. ( <i>g. Ceratoptera</i> )	19		
	festae, Griff. ( <i>g. Ischnoptera</i> )	8		
	festae, Gig.-Tos. ( <i>g. Phyllochromia</i> )	14		
	figurata, Walk. ( <i>g. Phyllochromia</i> )	11		
	fissa, Sauss. & Zehnt. ( <i>g. Phyllochromia</i> )	12		
	fissa, Sauss. & Zehnt. ( <i>g. Ceratoptera</i> )	20		
	flavicollis, Serv. ( <i>g. Ischnoptera</i> )	7		
	flavipes, Burm. ( <i>g. Pseudomops</i> )	4		
	flavocincta, Scudd. ( <i>g. Ischnoptera</i> )	7		
	flexivitta, Walk. ( <i>g. Phyllochromia</i> )	14		
	fortunata, Krauss. ( <i>g. Lobopecta</i> )	22		
	fraterna, Sauss. & Zehnt. ( <i>g. Phyllochromia</i> )	15		
	fuliginosa, Brunn. v. W. ( <i>g. Phyllochromia</i> )	13		
	fulva, Sauss. ( <i>g. Ischnoptera</i> )	7		
	fulva, Brunn. v. W. ( <i>g. Ceratoptera</i> )	19		
	fumata, Burm. ( <i>g. Ischnoptera</i> )	8		
	funebri, Walk. ( <i>g. Phyllochromia</i> )	13		
	fungicola, Wheel. ( <i>g. Attaphila</i> )	23		
	fusca, Brunn. v. W. ( <i>g. Ischnoptera</i> )	7		
	fusca, Sauss. ( <i>g. Phyllochromia</i> )	14		
	germanica, Linné ( <i>g. Phyllochromia</i> )	11		
	gracile, Butl. ( <i>g. Ellipsidion</i> )	5		
	gracilis, Burm. ( <i>g. Ischnoptera</i> )	8		
	grata, Rehn. ( <i>g. Pseudomops</i> )	4		
	guatemalae, Sauss. & Zehnt. ( <i>g. Ceratoptera</i> )	20		
	guerina, Sauss. ( <i>g. Pseudomops</i> )	4		
	guttifera, Walk. ( <i>g. Phyllochromia</i> )	14		
	halmaturina, Tepp. ( <i>g. Lobopecta</i> )	22		
	hamata, Gig.-Tos. ( <i>g. Ischnoptera</i> )	8		
	hamifera, Walk. ( <i>g. Phyllochromia</i> )	13		
	hebes, Walk. ( <i>g. Ischnoptera</i> )	8		
	hemerobina, Gerst. ( <i>g. Phyllochromia</i> )	11		
	hewitti, Shelf. ( <i>g. Phyllochromia</i> )	13		
	heydeniana, Sauss. ( <i>g. Pseudophyllochromia</i> )	17		
	hieroglyphica, Brunn. v. W. ( <i>g. Phyllochromia</i> )	13		
	himalayica, Brunn. v. W. ( <i>g. Ischnoptera</i> )	7		
	hirticornis, Burm. ( <i>g. Pseudomops</i> )	4		
	histrion, Sauss. ( <i>g. Pseudophyllochromia</i> )	17		
	histrionicum, Rehn. ( <i>g. Ellipsidion</i> )	6		
	hospes, Perk. ( <i>g. Phyllochromia</i> )	14		
	hottentota, Sauss. ( <i>g. Ceratoptera</i> )	19		
	humbertiana, Sauss. ( <i>g. Phyllochromia</i> )	12		
	humeralis, Tepp. ( <i>g. Ellipsidion</i> )	6		
	humeralis, Walk. ( <i>g. Phyllochromia</i> )	13		
	hyalina, Scudd. ( <i>g. Ischnoptera</i> )	7		
	hystrix, Sauss. ( <i>g. Pseudophyllochromia</i> )	17		
	ignobilis, Sauss. ( <i>g. Ischnoptera</i> )	8		
	ignobilis, Walk. ( <i>g. Phyllochromia</i> )	14		
	immunda, Brunn. v. W. ( <i>g. Phyllochromia</i> )	13		
	inaequalis, Sauss. & Zehnt. ( <i>g. Ischnoptera</i> )	7		
	inca, Sauss. & Zehnt. ( <i>g. Ischnoptera</i> )	8		
	incisa, Walk. ( <i>g. Phyllochromia</i> )	15		
	incisa, Sauss. & Zehnt. ( <i>g. Phyllochromia</i> )	12		
	inclusa, Walk. ( <i>g. Pseudomops</i> )	4		
	incommoda, Kirby ( <i>g. Ceratoptera</i> )	20		
	inconspicua, Brunn. v. W. ( <i>g. Temnopteryx</i> )	21		
	incuriosa, Sauss. ( <i>g. Ischnoptera</i> )	6		
	indica, Brunn. v. W. ( <i>g. Ischnoptera</i> )	7		
	indica, Sauss. ( <i>g. Temnopteryx</i> )	21		
	indica, Brunn. v. W. ( <i>g. Lobopecta</i> )	22		
	inexacta, Walk. ( <i>g. Phyllochromia</i> )	12		
	inexpectata, Rehn. ( <i>g. Phyllochromia</i> )	14		
	infusca, Brun. ( <i>g. Phyllochromia</i> )	15		
	innotabilis, Walk. ( <i>g. Phyllochromia</i> )	12		
	inquinata, Walk. ( <i>g. Allacta</i> )	18		
	inscripta, Walk. ( <i>g. Ceratoptera</i> )	19		
	insignis, Shelf. ( <i>g. Phyllochromia</i> )	11		
	insularis, Walk. ( <i>g. Phyllochromia</i> )	15		
	insularis, Sauss. ( <i>g. Lupparia</i> )	16		
	intercepta, Burm. ( <i>g. Pseudomops</i> )	4		
	intermedia, Sauss. & Zehnt. ( <i>g. Phyllochromia</i> )	14		
	intricata, Blatch. ( <i>g. Ischnoptera</i> )	8		
	irregulariter-vittata, Brunn. v. W. ( <i>g. Phyllochromia</i> )	13		
	<b>Ischnoptera</b> (genus), Burm.	6		
	isomorpha, Walk. ( <i>g. Phyllochromia</i> )	13		
	jallae, Gig.-Tos. ( <i>g. Ischnoptera</i> )	6		
	jamaicana, Rehn ( <i>g. Ischnoptera</i> )	8		

	Pages.		Pages.		Pages.
japonica, Shelf. ( <i>g. Liosilpha</i> )	16	<b>Macrophyllodromia</b> (genus),		morio, Burm. ( <i>g. Ischnoptera</i> )	8
jocosicluna, Sauss. ( <i>g. Anisophygia</i> )	21	Sauss.	18	multiramosa, Brunn. v. W. ( <i>g. Ischnoptera</i> )	7
johnsoni, Rehn ( <i>g. Ischnoptera</i> )	8	macroptera, Walk. ( <i>g. Phyllodromia</i> )	12	mundicola, Walk. ( <i>g. Allacta</i> )	18
josephina, Gig.-Tos ( <i>g. Ischnoptera</i> )	8	madecassa, Sauss. ( <i>g. Phyllodromia</i> )	12	munzigeri, Sauss. ( <i>g. Phyllodromia</i> )	11
kaupiana, Sauss. ( <i>g. Ceratinoptera</i> )	20	madecassa, Sauss. ( <i>g. Ceratinoptera</i> )	19	nahua, Sauss. ( <i>g. Ischnoptera</i> )	8
lacrymula, Sauss. & Zehnt. ( <i>g. Phyllodromia</i> )	12	madecassa, Sauss. & Zehnt. ( <i>g. Temnopteryx</i> )	21	nahua, Sauss. ( <i>g. Phyllodromia</i> )	15
laterifera, Walk. ( <i>g. Phyllodromia</i> )	13	magna, Shelf. ( <i>g. Pseudomops</i> )	4	nahua, Sauss. ( <i>g. Paraceratinoptera</i> )	20
laticaput, Brunn. v. W. ( <i>g. Pseudophyllodromia</i> )	17	magna, Tepp. ( <i>g. Phyllodromia</i> )	14	nana, Sauss. & Zehnt. ( <i>g. Ischnoptera</i> )	8
laticeps, Walk. ( <i>g. Pseudophyllodromia</i> )	17	major, Sauss. & Zehnt. ( <i>g. Ischnoptera</i> )	7	nana, Sauss. ( <i>g. Temnopteryx</i> )	21
laticornis, Perty ( <i>g. Pseudomops</i> )	4	majuscula, Walk. ( <i>g. Phyllodromia</i> )	13	natalensis, Walk. ( <i>g. Ischnoptera</i> )	6
latimarco, Walk. ( <i>g. Phyllodromia</i> )	14	malagassa, Sauss. & Zehnt. ( <i>g. Ischnoptera</i> )	6	nebulosa, Shelf. ( <i>g. Phyllodromia</i> )	13
latipennis, Brunn. v. W. ( <i>g. Allacta</i> )	18	manicata, Tepp. ( <i>g. Ischnoptera</i> )	7	neglecta, Shelf. ( <i>g. Pseudomops</i> )	4
latipes, W. ( <i>g. Ceratinoptera</i> )	20	<b>Mareta</b> (genus), Bol	10	neglecta, Shelf. ( <i>g. Phyllodromia</i> )	12
latirupta, W. ( <i>g. Allacta</i> )	18	marginata, Brunn. v. W. ( <i>g. Ischnoptera</i> )	8	neutra, Sauss. ( <i>g. Ischnoptera</i> )	6
latistriga, Walk. ( <i>g. Phyllodromia</i> )	12	marginata, Brunn. v. W. ( <i>g. Chras-toblatta</i> )	9	neutra, Shelf. ( <i>g. Phyllodromia</i> )	11
latius-vittata, Brunn. v. W. ( <i>g. Phyllodromia</i> )	14	marginata, Bol. ( <i>g. Phyllodromia</i> )	12	nigricollis, Walk. ( <i>g. Ischnoptera</i> )	8
laurenziana, Gig.-Tos. ( <i>g. Lobopectera</i> )	22	marginata, Tepp. ( <i>g. Allacta</i> )	18	nigrita, Sauss. ( <i>g. Pseudomops</i> )	4
limbata, Sauss. ( <i>g. Ceratinoptera</i> )	20	marginifera, Walk. ( <i>g. Ellipsidion</i> )	6	nigrita, Bol. ( <i>g. Phyllodromia</i> )	14
lineata, Oliv. ( <i>g. Pseudischnoptera</i> )	10	marmorata, Brunn. v. W. ( <i>g. Phyllodromia</i> )	13	nigrolineata, Stål. ( <i>g. Phyllodromia</i> )	14
lineolata, Dalm. ( <i>g. Pseudophyllodromia</i> )	17	marmorata, Walk. ( <i>g. Phyllodromia</i> )	13	nigromarginata, Shelf. ( <i>g. Phyllodromia</i> )	11
<b>Liosilpha</b> (genus), Stål.	16	maroccana, Bol. ( <i>g. Lobopectera</i> )	22	nimbata, Shelf. ( <i>g. Phyllodromia</i> )	13
litura, Tepp. ( <i>g. Ellipsidion</i> )	6	martini, Bol. ( <i>g. Ceratinoptera</i> )	19	nitens, Brunn. v. W. ( <i>g. Phyllodromia</i> )	13
litureta, Tepp. ( <i>g. Phyllodromia</i> )	14	maximiliani, Sauss. ( <i>g. Macrophyllodromia</i> )	18	nitida, Sauss. & Zehnt. ( <i>g. Ceratinoptera</i> )	20
lituricollis, Walk. ( <i>g. Phyllodromia</i> )	13	maya, Sauss. & Zehnt. ( <i>g. Phyllodromia</i> )	15	nitida, Shelf. ( <i>g. Lobopectera</i> )	22
litureta, Stål. ( <i>g. Phyllodromia</i> )	12	megaspila, Walk. ( <i>g. Phyllodromia</i> )	13	nodosa, Fritze ( <i>g. Phyllodromia</i> )	13
litureta, Walk. ( <i>g. Pseudophyllodromia</i> )	17	melana, Walk. ( <i>g. Pseudomops</i> )	4	nortoniana, Sauss. ( <i>g. Ischnoptera</i> )	7
lobata, Sauss. ( <i>g. Anallacta</i> )	19	melasa, Walk. ( <i>g. Ischnoptera</i> )	8	notabilis, Walk. ( <i>g. Phyllodromia</i> )	12
lobipennis, Sauss. ( <i>g. Ceratinoptera</i> )	20	mellea, Krauss. ( <i>g. Phyllodromia</i> )	12	notata, Brunn. v. W. ( <i>g. Phyllodromia</i> )	15
lobiventris, Sauss. ( <i>g. Phyllodromia</i> )	11	mendica, Shelf. ( <i>g. Phyllodromia</i> )	12	notulata, Stål. ( <i>g. Phyllodromia</i> )	13
<b>Lobopectera</b> (genus), Brunn. v. W.	22	methanoides, Shelf. ( <i>g. Anallacta</i> )	19	nyctoboroides, Rehn ( <i>g. Ischnoptera</i> )	8
longealata, Brunn. v. W. ( <i>g. Phyllodromia</i> )	13	mexicana, Sauss. ( <i>g. Pseudomops</i> )	4	obliquata, Dald. ( <i>g. Phyllodromia</i> )	11
longstaffi, Shelf. ( <i>g. Ischnoptera</i> )	6	mexicana, Sauss. ( <i>g. Ischnoptera</i> )	8	oblongata, Linn. ( <i>g. Pseudomops</i> )	4
luctuosa, Sauss. ( <i>g. Pseudomops</i> )	4	mexicana, Sauss. ( <i>g. Phyllodromia</i> )	15	obscura, Sauss. ( <i>g. Pseudomops</i> )	4
lugubris, Stål. ( <i>g. Pseudothyrocera</i> )	5	mimica, Walk. ( <i>g. Pseudomops</i> )	4	obscura, Tepp. ( <i>g. Ischnoptera</i> )	7
lugubris, Brunn. v. W. ( <i>g. Phyllodromia</i> )	13	minor, Brunn. v. W. ( <i>g. Phyllodromia</i> )	14	obscura, Sauss. ( <i>g. Pseudophyllodromia</i> )	17
luneli, Sauss. ( <i>g. Phyllodromia</i> )	12	minor, Bol. ( <i>g. Lobopectera</i> )	22	obscura, Sauss. ( <i>g. Temnopteryx</i> )	21
<b>Lupparia</b> (genus), Walk.	16	mirabilis, Shelf. ( <i>g. Phyllodromia</i> )	11	obscura, Gerst. ( <i>g. Phyllodromia</i> )	11
lutea, Sauss. & Zehnt. ( <i>g. Ceratinoptera</i> )	20	modesta, Brunn. v. W. ( <i>g. Ischnoptera</i> )	7	obtusata, Brunn. v. W. ( <i>g. Phyllodromia</i> )	14
lycoides, Walk. ( <i>g. Phyllodromia</i> )	12	modesta, Brunn. v. W. ( <i>g. Allacta</i> )	18	obtusifrons, Walk. ( <i>g. Phyllodromia</i> )	13
macilenta, Sauss. & Zehnt. ( <i>g. Phyllodromia</i> )	12	molesta, Brunn. v. W. ( <i>g. Phyllodromia</i> )	14	occidentalis, Sauss. ( <i>g. Ischnoptera</i> )	7
		montana, Shelf. ( <i>g. Pseudothyrocera</i> )	5	ocularis, Sauss. ( <i>g. Ischnoptera</i> )	8
		montis, Shelf. ( <i>g. Ischnoptera</i> )	7	olmeca, Sauss. ( <i>g. Ceratinoptera</i> )	20
				<b>Onychostylus</b> (genus), Bol.	16
				opima, Sauss. & Zehnt. ( <i>g. Phyllodromia</i> )	12

Pages.		Pages		Pages.
15	orizabae, Sauss. ( <i>g. Phyllodromia</i> )	6	picea, Schulth. ( <i>g. Ischnoptera</i> )	14
17	ornata, Brunn. v. W. ( <i>g. Pseudophyllo-</i> <i>dromia</i> )	20	picta, Brunn. v. W. ( <i>g. Ceratinoptera</i> )	12
20	otomia, Sauss. ( <i>g. Ceratinoptera</i> )	13	picteti, Fritze ( <i>g. Phyllodromia</i> )	5
19	ovata, Shelf. ( <i>g. Ceratinoptera</i> )	14	picticollis, Walk. ( <i>g. Phyllodromia</i> )	15
5	<b>Pachnepteryx</b> (genus), Brunn. v. W.	13	picturata, Shelf. ( <i>g. Phyllodromia</i> )	7
18	pallescens, Tepp. ( <i>g. Allacta</i> )	9	<b>Piroblatta</b> (genus), Shelf.	7
18	pallida, Tepp. ( <i>g. Allacta</i> )	5	placens, Walk. ( <i>g. Ellipsoidion</i> )	8
5	pallidicollis, Stål. ( <i>g. Pachnepteryx</i> )	6	<b>Platamodes</b> (genus) Scudd.	8
13	pallidiola, Shir. ( <i>g. Phyllodromia</i> )	20	platysoma, Walk. ( <i>g. Ceratinoptera</i> )	8
12	pallidula, Wern. ( <i>g. Phyllodromia</i> )	20	poeyi, Sauss. ( <i>g. Ceratinoptera</i> )	21
16	pallidula, Bol. ( <i>g. Luffparia</i> )	13	polygrapha, Walk. ( <i>g. Phyllodromia</i> )	11
14	pallipes, Scudd. ( <i>g. Phyllodromia</i> )	20	porcellana, Sauss. ( <i>g. Ceratinoptera</i> )	11
15	palpalis, Walk. ( <i>g. Duryodana</i> )	19	portalensis, Gig.-Tos ( <i>g. Ceratino-</i> <i>ptera</i> )	6
15	palpata, Brunn. v. W. ( <i>g. Duryodana</i> )	7	procera, Brunn. v. W. ( <i>g. Ischnoptera</i> )	5
14	papua, Sauss. & Zehnt. ( <i>g. Phyllo-</i> <i>dromia</i> )	17	prona, Rehn. ( <i>g. Pseudophyllodromia</i> )	5
21	panteli, Sauss. ( <i>g. Temnopteryx</i> )	14	propinqua, Walk. ( <i>g. Phyllodromia</i> )	21
20	<b>Paraceratinoptera</b> (genus), Sauss.	5	pruinosa, Brunn. v. W. ( <i>g. Pachne-</i> <i>pteryx</i> )	4
7	parallela, Tepp. ( <i>g. Ischnoptera</i> )	16	<b>Pseudectobia</b> (genus), Sauss.	8
22	<b>Paraloboptera</b> (genus), Sauss.	10	<b>Pseudischnoptera</b> (genus), Sauss.	21
14	parana, Walk. ( <i>g. Phyllodromia</i> )	3	<b>Pseudomops</b> (genus), Serv.	22
9	<b>Paratemnopteryx</b> (genus), Sauss.	17	<b>Pseudophyllodromia</b> (genus), Brunn. v. W.	23
11	parenthesis, Gerst. ( <i>g. Phyllodromia</i> )	4	<b>Pseudothyrsocera</b> (genus), Shelf.	19
14	partita, Walk. ( <i>g. Phyllodromia</i> )	4	puiggarii, Bol. ( <i>g. Pseudomops</i> )	12
18	parva, Shelf. ( <i>g. Allacta</i> )	4	pulcherrima, Shelf. ( <i>g. Pseudophyllo-</i> <i>dromia</i> )	5
8	parvula, Sauss. ( <i>g. Ischnoptera</i> )	17	pumicata, Stål ( <i>g. Liosilpha</i> )	15
11	patricia, Gerst. ( <i>g. Phyllodromia</i> )	16	puncticollis, Brunn. v. W. ( <i>g. Phyllo-</i> <i>dromia</i> )	14
18	patula, Walk. ( <i>g. Allacta</i> )	13	punctifrons, Gerst. ( <i>g. Ischnoptera</i> )	23
15	pavida, Rehn. ( <i>g. Phyllodromia</i> )	6	punctulata, Sauss. & Zehnt. ( <i>g. Phyl-</i> <i>lodromia</i> )	5
17	pavonacea, Rehn. ( <i>g. Pseudophyllodro-</i> <i>mia</i> )	12	punctulata, Brunn. v. W. ( <i>g. Phyllo-</i> <i>dromia</i> )	18
22	peculiaris, Burr. ( <i>g. Lobopectera</i> )	13	punctulata, Beauv. ( <i>g. Phyllodromia</i> )	4
14	pellucida, Burm. ( <i>g. Phyllodromia</i> )	15	pustulosa, Gerst. ( <i>g. Phyllodromia</i> )	13
5	pellucidum, Brunn. v. W. ( <i>g. Ellip-</i> <i>sidion</i> )	11	pygmaea, Beauv. ( <i>g. Ceratinoptera</i> )	19
7	pensylvanica, De Geer ( <i>g. Ischnoptera</i> )	20	quadriplaga, Walk. ( <i>g. Phyllodromia</i> )	11
17	perloides, Walk. ( <i>g. Pseudophyllodro-</i> <i>mia</i> )	5	quadripunctatum, Tepp. ( <i>g. Ellip-</i> <i>sion</i> )	20
23	perplexa, Shelf. ( <i>g. Apteroblatta</i> )	12	ramifera, Walk. ( <i>g. Phyllodromia</i> )	19
7	perpulchra, Shelf. ( <i>g. Ischnoptera</i> )	7	ramosa, Sauss. ( <i>g. Ischnoptera</i> )	11
19	perpulchra, Shelf. ( <i>g. Ceratinoptera</i> )	6	ramosum, Walk. ( <i>g. Ellipsoidion</i> )	20
8	peruana, Sauss. ( <i>g. Ischnoptera</i> )	22	ras, Adel. ( <i>g. Paraloboptera</i> )	13
17	peruana, Sauss. ( <i>g. Pseudophyllodro-</i> <i>mia</i> )	11	reducta, Walk. ( <i>g. Phyllodromia</i> )	15
20	peruviana, Brunn. v. W. ( <i>g. Cerati-</i> <i>noptera</i> )	6	relucens, Gerst. ( <i>g. Ischnoptera</i> )	18
11	phalerata, Sauss. ( <i>g. Phyllodromia</i> )	11	rectangulariter-vittata, Brunn. v. W. ( <i>g. Phyllodromia</i> )	15
21	phalerata, Sauss. ( <i>g. Temnopteryx</i> )	11		15
10	<b>Phyllodromia</b> (genus), Serv.	6		15
5	pica, Walk. ( <i>g. Pseudothyrsocera</i> )	13		15
		13	reticularis, Blanch. ( <i>g. Phyllodromia</i> )	14
		13	reticulata, Fab. ( <i>g. Phyllodromia</i> )	12
		13	reticulatum, Sauss. ( <i>g. Ellipsoidion</i> )	5
		13	reticulosa, Walk. ( <i>g. Phyllodromia</i> )	15
		7	reversa, Walk. ( <i>g. Ischnoptera</i> )	7
		7	ridleyi, Shelf. ( <i>g. Ischnoptera</i> )	7
		8	rubiginosa, Walk. ( <i>g. Ischnoptera</i> )	8
		8	rufa, Brunn. v. W. ( <i>g. Ischnoptera</i> )	8
		8	rufa, De Geer ( <i>g. Ischnoptera</i> )	8
		21	rufa, Shelf. ( <i>g. Temnopteryx</i> )	21
		11	rufescens, Beauv. ( <i>g. Phyllodromia</i> )	11
		11	ruficeps, Kirby ( <i>g. Phyllodromia</i> )	11
		6	ruficollis, Fab. ( <i>g. Ischnoptera</i> )	6
		5	ruficollis, Shelf. ( <i>g. Pseudothyrsocera</i> )	5
		5	rufiventris, Stål ( <i>g. Pseudothyrsocera</i> )	5
		21	sakalava, Sauss. ( <i>g. Temnopteryx</i> )	21
		4	sallei, Sauss. ( <i>g. Pseudomops</i> )	4
		8	sancta, Gig.-Tos. ( <i>g. Ischnoptera</i> )	8
		14	santarema, Walk. ( <i>g. Phyllodromia</i> )	14
		12	saussurei, Shelf. ( <i>g. Phyllodromia</i> )	12
		21	saussurei, Bol. ( <i>g. Temnopteryx</i> )	21
		22	schaefferi, Rehn. ( <i>g. Lobopectera</i> )	22
		23	schuppi, Bol. ( <i>g. Attaphila</i> )	23
		19	schulthessi, Kirby ( <i>g. Ceratinoptera</i> )	19
		12	scioana, Adel. ( <i>g. Phyllodromia</i> )	12
		5	scutigera, Walk. ( <i>g. Pseudothyrsocera</i> )	5
		14	secura, Krauss. ( <i>g. Phyllodromia</i> )	14
		5	semicineta, Stål. ( <i>g. Pseudothyrsocera</i> )	5
		15	semivitreata, Brunn. v. W. ( <i>g. Phyllo-</i> <i>dromia</i> )	15
		14	sequens, Walk. ( <i>g. Phyllodromia</i> )	14
		23	sex-dentis, Bol. ( <i>g. Attaphila</i> )	23
		5	signata, Brunn. v. W. ( <i>g. Pseudothy-</i> <i>socera</i> )	5
		5	signaticollis, Stål. ( <i>g. Pachnepteryx</i> )	5
		6	sikorae, Sauss. & Zehnt. ( <i>g. Ischnop-</i> <i>ptera</i> )	6
		18	similis, Sauss. ( <i>g. Allacta</i> )	18
		4	simulans, Stål ( <i>g. Pseudomops</i> )	4
		13	sinensis, Walk. ( <i>g. Phyllodromia</i> )	13
		19	sjöstedti, Shelf. ( <i>g. Ceratinoptera</i> )	19
		11	sjöstedti, Shelf. ( <i>g. Phyllodromia</i> )	11
		20	snodgrassi, McNeill ( <i>g. Ceratinoptera</i> )	20
		13	sordida, Brunn. v. W. ( <i>g. Phyllodromia</i> )	13
		15	spectativa, Rehn. ( <i>g. Phyllodromia</i> )	15
		18	spuria, Brunn. v. W. ( <i>g. Allacta</i> )	18
		15	strigata, Blanch. ( <i>g. Phyllodromia</i> )	15
		6	strigosa, Schaum. ( <i>g. Ischnoptera</i> )	6
		11	subfasciata, Walk. ( <i>g. Phyllodromia</i> )	11
		13	subgenitalis, Fritze ( <i>g. Phyllodromia</i> )	13
		12	submarginata, Walk. ( <i>g. Phyllodromia</i> )	12
		15	subpectinata, Sauss. & Zehnt. ( <i>g. Phyl-</i> <i>lodromia</i> )	15

Pages.		Pages.		Pages.
12	subreticulata, Walk. ( <i>g. Phyllodromia</i> )	7	translucida, Sauss. ( <i>g. Ischnoptera</i> )	19
13	subtilis, Brunn. v. W. ( <i>g. Phyllodromia</i> )	19	transvaaliensis, Kirby ( <i>g. Ceratinoptera</i> )	14
14	suffusa, Walk. ( <i>g. Phyllodromia</i> )	11	transversalis, Walk. ( <i>g. Phyllodromia</i> )	14
20	sumichrasti, Sauss. ( <i>g. Ceratinoptera</i> )	12	treitliana, Wern. ( <i>g. Phyllodromia</i> )	17
19	sundaica, Fritze ( <i>g. Ceratinoptera</i> )	13	triangulariter-vittata, Brunn. v. W. ( <i>g. Phyllodromia</i> )	19
11	supellectilium, Serv. ( <i>g. Phyllodromia</i> )	9	tricolor, Sauss. & Zehnt. ( <i>g. Chrastoblatta</i> )	5
8	taczanowskii, Bol. ( <i>g. Ischnoptera</i> )	10	tricolor, Sauss. ( <i>g. Caloblatta</i> )	17
20	tarasca, Sauss. ( <i>g. Ceratinoptera</i> )	22	tricolor, Tepp. ( <i>g. Lobopectera</i> )	5
22	tartara, Sauss. ( <i>g. Lobopectera</i> )	11	trigonalis, Sauss. ( <i>g. Phyllodromia</i> )	5
12	telephoroides, Walk. ( <i>g. Phyllodromia</i> )	7	triramosa, Sauss. ( <i>g. Ischnoptera</i> )	13
21	<b>Temnopteryx</b> (genus), Brunn. v. W.	4	tristricula, Stål ( <i>g. Pseudomops</i> )	13
11	terminalis, Walk. ( <i>g. Phyllodromia</i> )	12	trivirgata, Wern. ( <i>g. Phyllodromia</i> )	13
13	terminalis, Brunn. v. W. ( <i>g. Phyllodromia</i> )	22	trivittata, Erichs. ( <i>g. Lobopectera</i> )	8
7	termitina, Sauss. ( <i>g. Ischnoptera</i> )	21	truncata, Sauss. ( <i>g. Temnopteryx</i> )	8
11	testacea, Shelf. ( <i>g. Phyllodromia</i> )	7	uhleriana, Sauss. ( <i>g. Ischnoptera</i> )	15
6	testaceum, Tepp. ( <i>g. Ellipsoidion</i> )	19	undata, Sauss. & Zehnt. ( <i>g. Anallacta</i> )	12
20	texensis, Sauss. & Zehnt. ( <i>g. Ceratinoptera</i> )	8	undulifera, Walk. ( <i>g. Ischnoptera</i> )	5
3	<b>Thyrsocera</b> (genus), Burm.	16	unguiculatus, Bol. ( <i>g. Onychostylus</i> )	9
14	titania, Rehn ( <i>g. Phyllodromia</i> )	7	unicolor, Scudd. ( <i>g. Ischnoptera</i> )	15
4	tolteca, Sauss. ( <i>g. Pseudomops</i> )	13	unicolor, Brunn. v. W. ( <i>g. Phyllodromia</i> )	15
8	tolteca, Sauss. ( <i>g. Ischnoptera</i> )	22	unicolor, Sauss. ( <i>g. Paralobopectera</i> )	12
15	tononaca, Sauss. ( <i>g. Phyllodromia</i> )	19	usambarensis, Shelf. ( <i>g. Ceratinoptera</i> )	9
		15	vacillans, Walk. ( <i>g. Phyllodromia</i> )	
			variabilis, Shelf. ( <i>g. Ceratinoptera</i> )	
			varicornis, Walk. ( <i>g. Phyllodromia</i> )	
			variegata, Brunn. v. W. ( <i>g. Phyllodromia</i> )	
			variegata, Walk. ( <i>g. Pseudophyllodromia</i> )	
			variegata, Schulth. ( <i>g. Ceratinoptera</i> )	
			variegatum, Fab. ( <i>g. Ellipsoidion</i> )	
			venosa, Sauss. ( <i>g. Pseudophyllodromia</i> )	
			ventralis, Walk. ( <i>g. Pachnepteryx</i> )	
			vestitum, Burm. ( <i>g. Ellipsoidion</i> )	
			vicina, Brunn. v. W. ( <i>g. Phyllodromia</i> )	
			vilis, Sauss. ( <i>g. Ischnoptera</i> )	
			vilis, Brunn. v. W. ( <i>g. Phyllodromia</i> )	
			virescens, Walk. ( <i>g. Phyllodromia</i> )	
			virginica, Brunn. v. W. ( <i>g. Ischnoptera</i> )	
			vitrea, Brunn. v. W. ( <i>g. Phyllodromia</i> )	
			voeltzkowiana, Sauss. & Zehnt. ( <i>g. Phyllodromia</i> )	
			xanthophila, Walk. ( <i>g. Pseudothyrsocera</i> )	
			zapoteca, Sauss. ( <i>g. Phyllodromia</i> )	
			zehntneri, Shelf. ( <i>g. Phyllodromia</i> )	
			zietzii, Tepp. ( <i>g. Paratemnopteryx</i> )	

## EXPLANATION OF PLATES

## PLATE I.

- Fig. 1. *Pseudomops angusta*, Walker.  
 — 2. *Pseudomops magna*, Shelford. Left tegmen.  
 — 3. *Pseudothyrsocera pica*, Walker.  
 — 4. *Ischnoptera natalensis*, Walker. ♂ Sub-genital lamina.  
 — 5. *Ischnoptera bimaculata*, Gerstäcker. Apex of abdomen, ♂, dorsal view.  
 — 6. *Ellipsoidion castaneum*, Shelford.  
 — 6a. *Ischnoptera inca*, Saussure & Zehntner. Left wing.  
 — 7. *Pseudophyllodromia angustata*, Latreille.  
 — 8. *Pseudophyllodromia laticeps*, Walker. Left tegmen.  
 — 9. *Pseudophyllodromia hystrix*, Saussure. Left tegmen.  
 — 10. *Duryodana palpalis*, Walker.  
 — 11. *Duryodana palpalis*, Walker. Head from below.  
 — 12. *Lupparia adimonialis*, Walker.

## PLATE 2.

- Fig. 1. *Phyllodromia marmorata*, Walker.  
— 2. *Phyllodromia supellectilium*, Serville. Apex of abdomen, ♂. Dorsal view.  
— 3. *Temnopteryx abyssinica*, Saussure & Zehntner.  
— 4. *Anisopygia jocosicluna*, Saussure.  
— 5. *Anisopygia jocosicluna*, Saussure, Apex of abdomen, ♂. Dorsal view.  
— 6. *Ceratinoptera inscripta*, Walker.  
— 7. *Allacta spuria*, Brunner von Wattenwyl.  
— 8. *Anallacta methanoides*, nov. sp.  
— 9. *Loboptera peculiaris*, Burr.  
— 10. *Paratemnopteryx blattoides*, Tepper. Apex of abdomen, ♂. Ventral view.  
— 11. *Attaphila bergi*, Bolivar (after Bolivar).

---

Oxford, May 15<sup>th</sup> 1908.

