

47/2012

**Raport Badawczy**

**RB/34/2012**

**Research Report**

**A detailed map of GHG related  
activity data in Poland, ready  
for use in Work Package 1.  
Deliverable 3.1**

**R. Bun, M. Lesiv, K. Boychuk,  
P. Topylko, O. Danylo,  
O. Yaremchyshyn, N. Charkovska,  
P. Boychuk, M. Galuschak, Z. Nahorski,  
J. Horabik, J. Jarnicka**

**Instytut Badań Systemowych  
Polska Akademia Nauk**

**Systems Research Institute  
Polish Academy of Sciences**



# **POLSKA AKADEMIA NAUK**

## **Instytut Badań Systemowych**

ul. Newelska 6

01-447 Warszawa

tel.: (+48) (22) 3810100

fax: (+48) (22) 3810105

Kierownik Zakładu zgłaszający pracę:  
Prof. zw. dr hab. inż. Zbigniew Nahorski

Warszawa 2012

## **D 3.1**

**Version** 1  
**Date** 29.02.2012  
**Author** LPNU, SRI  
**Dissemination level** PP  
**Document reference** D 3.1

# **GESAPU**

## **Geoinformation technologies, spatio-temporal approaches, and full carbon account for improving accuracy of GHG inventories**

### **Deliverable 3.1. A detailed map of GHG related activity data in Poland, ready for use in Work Package 1**

*Rostyslav Bun, Myroslava Lesiv (Editors),  
Mykola Gusti, Khrystyna Boychuk, Petro Topylko, Olha Danylo, Olena Yaremhyshyn,  
Nadiya Charkovska, Oleksandr Stryamets, Petro Boychuk*  
Lviv Polytechnic National University, Ukraine;

*Zbigniew Nahorski, Joanna Horabik, Jolanta Jarnicka,*  
Systems Research Institute, Polish Academy of Sciences, Poland

**Delivery Date: M18**

<b>Project Duration</b>	24 June 2010 – 23 June 2014 (48 Months)
<b>Coordinator</b>	Systems Research Institute of the Polish Academy of Sciences (SRI)
<b>Work package leader</b>	Systems Research Institute of the Polish Academy of Sciences (SRI)

## **Disclaimer**

The information in this document is subject to change without notice. Company or product names mentioned in this document may be trademarks or registered trademarks of their respective companies.

## **All rights reserved**

The document is proprietary of the GESAPU consortium members. No copying or distributing, in any form or by any means, is allowed without the prior written agreement of the owner of the property rights. This document reflects only the authors' view.

This project is supported by funding by the European Commission: FP7-PEOPLE-2009-IRSES, Project n° 247645.

**Project: #247645. Call: FP7-PEOPLE-2009-IRSES, Marie Curie Actions—International Research Staff Exchange Scheme (IRSES).**

**Work package 3. Improving accuracy of inventories by means of spatio-temporal statistical methods**

**Deliverable 3.1. A detailed map of GHG related activity data in Poland, ready for use in Work Package 1**

## **Content**

- 1. Maps of population density and GDP density for Poland**
- 2. Maps of activity data for Energy sector: stationary sources**
- 3. Maps of activity data for Energy sector: mobile sources**
- 4. Maps of activity data for Industry and Agriculture**

## **List of figures**

- Figure 1.1.** Relative change of population in Poland, 2000-2009
- Figure 1.2.** Population density of Poland, 2009
- Figure 1.3.** GDP per capita in Poland, 2009 (PLN/person, current prices)
- Figure 1.4.** GDP in Poland, 2009 (PLN/km<sup>2</sup>, current prices)
- Figure 1.5.** Relative GVA generated in industry (sectors B,C,D,E)
- Figure 1.6.** GDP generated in agriculture, forestry and fishing in Poland (Section A) (PLN/km<sup>2</sup>, current prices)
- Figure 1.7.** GDP generated in industry in Poland (Sections B,C,D,E) (PLN/km<sup>2</sup>, current prices)
- Figure 1.8.** GDP generated in industry excluding manufacturing in Poland, (Sections B,D,E) (PLN/km<sup>2</sup>, current prices)
- Figure 1.9.** GDP generated in manufacturing in Poland, (Section C) (PLN/km<sup>2</sup>, current prices)
- Figure 1.10.** GDP generated in construction in Poland (Section F) (PLN/km<sup>2</sup>, current prices)
- Figure 2.1.** Coal and natural gas consumption for Electricity and Heat Production in voivodeships
- Figure 2.2.** Localization of heat/power plants
- Figure 2.3.** Population using gas system (% of total population, Poland)
- Figure 2.4.** Dwelling fitted with central heating (% of total living area, Poland)
- Figure 2.5.** Disaggregated data on coal consumption in residential sector (kg/km<sup>2</sup>, Poland)
- Figure 2.6.** Disaggregated data on liquefied gas consumption in residential sector (10<sup>3</sup> ton/km<sup>2</sup>, Poland)
- Figure 2.7.** Disaggregated data on natural gas consumption in residential sector (TJ/km<sup>2</sup>, Poland)
- Figure 3.1.** Gasoline consumption by passenger cars (municipalities of Poland, 10<sup>3</sup> tons)

**Figure 3.2.** Diesel consumption by passenger cars (municipalities of Poland, 10<sup>3</sup> tons)

**Figure 3.3.** LPG consumption by passenger cars (municipalities of Poland, 10<sup>3</sup> tons)

**Figure 3.4.** Gasoline consumption by buses (municipalities of Poland, 10<sup>3</sup> tons)

**Figure 3.5.** Diesel consumption by buses (municipalities of Poland, 10<sup>3</sup> tons)

**Figure 3.6.** LPG consumption by buses (municipalities of Poland, 10<sup>3</sup> tons)

**Figure 3.7.** Gasoline consumption by lorries (municipalities of Poland, 10<sup>3</sup> tons)

**Figure 3.8.** Diesel consumption by lorries (municipalities of Poland, 10<sup>3</sup> tons)

**Figure 3.9.** Gasoline consumption by special vehicles and tractors (municipalities of Poland, 10<sup>3</sup> tons)

**Figure 3.10.** Diesel consumption by special vehicles and tractors (municipalities of Poland, 10<sup>3</sup> tons)

**Figure 3.11.** Automobile roads' capacity (Poland)

**Figure 3.12.** Spatial distribution of population (municipalities of Poland)

**Figure 4.1.** Cement plants' capacities (Gg)

**Figure 4.2.** Glass plants' capacities (Gg)

**Figure 4.3.** Fragment of geodatabase with data on population of livestock owned by individual farms in Poland

**Figure 4.4.** Population of cattle (dairy) owned by individual farms in Poland

**Figure 4.5.** Population of cattle (non-dairy) owned by individual farms of Poland

**Figure 4.6.** Population of swine owned by individual farms of Poland

**Figure 4.7.** Population of poultry owned by individual farms in Poland

**Figure 4.8.** Population of horses owned by individual farms in Poland

**Figure 4.9.** Population of sheep owned by individual farms in Poland

**Figure 4.10.** Population of goats owned by individual farms in Poland

**Figure 4.11.** Evergreen coniferous forest of Poland

**Figure 4.12.** Broadleaf forest of Poland

**Figure 4.13.** Mixed forest of Poland

## List of tables

**Table 2.1.** Fossil fuel used by power/heat stations of Polish voivodeships

**Table 2.2.** Information on power / heat stations

**Table 2.3.** Consumption of fossil fuels in residential sector of Poland

**Table 3.1.** Road motor vehicles by age groups (in %)

**Table 3.2.** Fuel consumption for transport needs

**Table 3.3.** Fuel consumption by transport categories

**Table 3.4.** Road motor vehicles in total

**Table 3.5.** Vehicle miles travelled

**Table 3.6.** Road motor vehicles by fuel type in total

**Table 3.7.** Fuel use for transport needs and in agriculture

**Table 3.8.** Road vehicles and tractors, in total

**Table 4.1.** Statistical data on Cement Industry in January, 2010

**Table 4.2.** Statistical data on Cement Industry in February, 2010

**Table 4.3.** Statistical data on Cement Industry in March, 2010

**Table 4.4.** Statistical data on Cement Industry in April, 2010

**Table 4.5.** Statistical data on Cement Industry in May, 2010

**Table 4.6.** Statistical data on Cement Industry in June, 2010

**Table 4.7.** Statistical data on Cement Industry in July, 2010

**Table 4.8.** Statistical data on Cement Industry in August, 2010

**Table 4.9.** Statistical data on Cement Industry in September, 2010

**Table 4.10.** Statistical data on Cement Industry in October, 2010

**Table 4.11.** Statistical data on Cement Industry in November, 2010

**Table 4.12.** Statistical data on Cement Industry in December, 2010

**Table 4.13.** Livestock population of Polish voivodeships, 2010

### 3. Maps of activity data for Energy sector: mobile sources

Statistical data on the use of fossil fuels in road transport and general activity parameters of the sector in Poland are available at the level of administrative units (voivodeships, districts, or municipalities) in yearbooks of transport statistics (GUS, 2011) and online statistical database (<http://www.stat.gov.pl/bdl/>). Separate parameters that are used in the model of spatial GHG emission inventory in road transport sector are available from statistical issues that contain transport statistics and summarising yearbooks (GUS, 2010).

For practical implementation of spatially distributed GHG inventory the following road transport activity data are used:

- Fuel consumption in road transport sector by fuel types, by vehicle types (*Figure 3.1-3.10, Tables 3.2-3.3*);
- Road motor vehicles by age groups (*Table 3.1*);
- Road motor vehicles in total (*Tables 3.4, 3.5, 3.6*);
- Vehicle mileage (*Table 3.5*);
- Roads' capacity and current state (*Figure 3.11*);
- Operation mode for each road segment ;
- Population density (*Figure 3.12*).

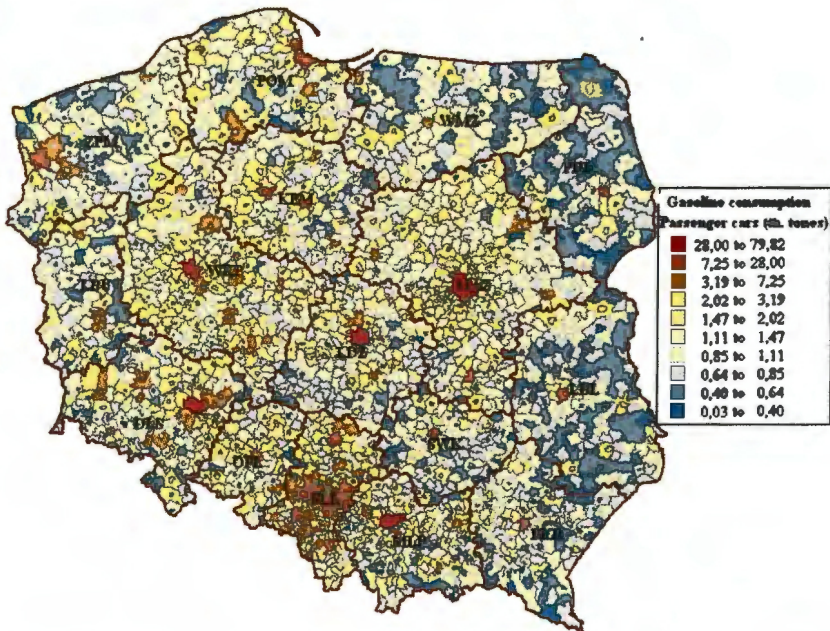


Figure 3.1. Gasoline consumption by passenger cars (municipalities of Poland, 2009,  $10^3$  tons)



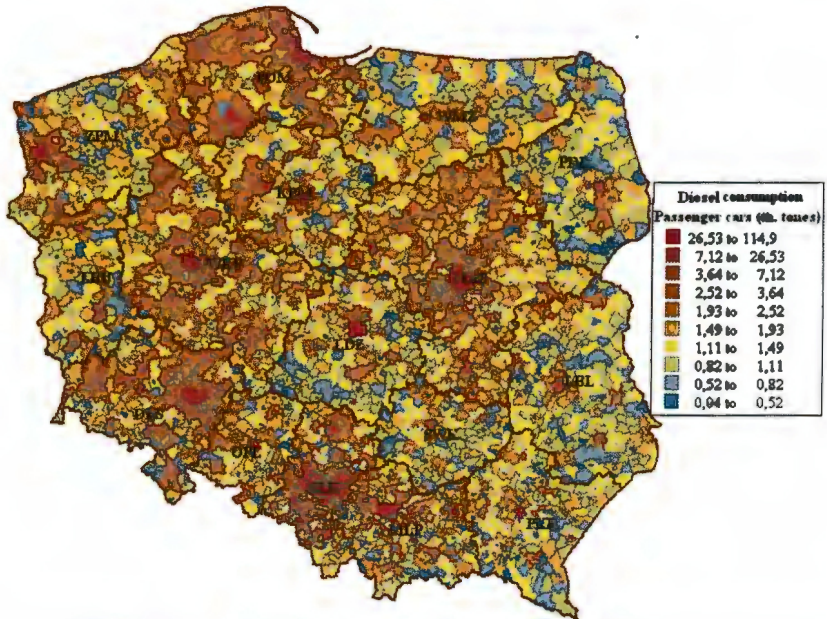


Figure 3.2. Diesel consumption by passenger cars (municipalities of Poland, 2009, 10<sup>3</sup> tons)

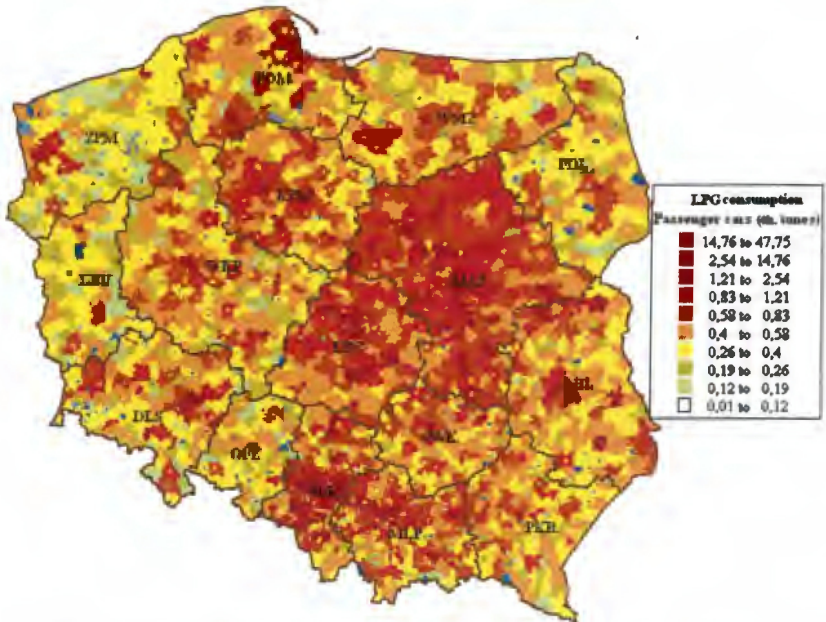


Figure 3.3. LPG consumption by passenger cars (municipalities of Poland, 2009, 10<sup>3</sup> tons)

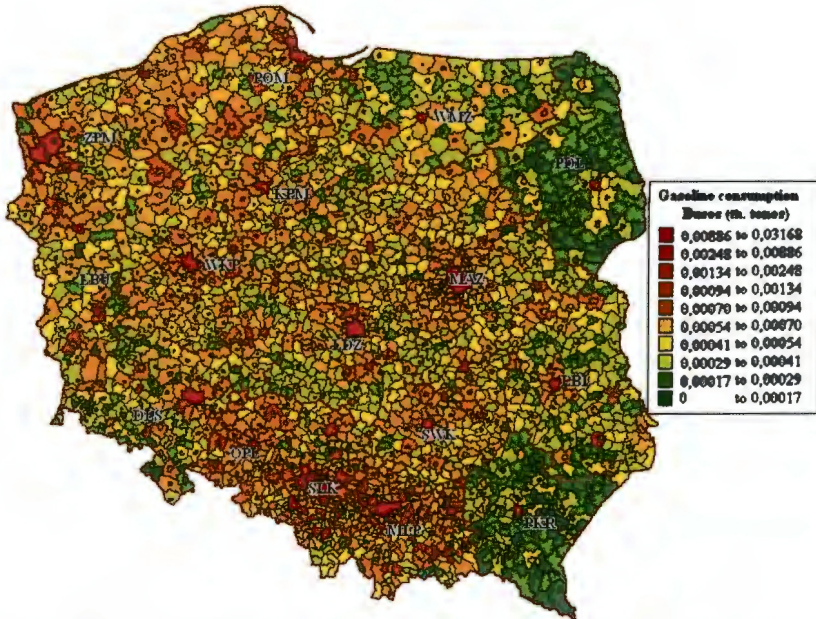


Figure 3.4. Gasoline consumption by buses (municipalities of Poland, 2009, 10<sup>3</sup> tons)

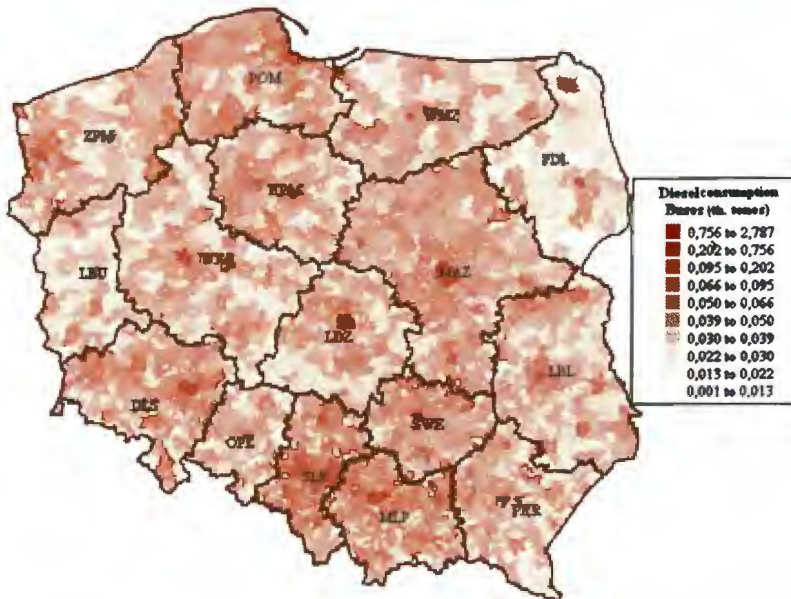


Figure 3.5. Diesel consumption by buses (municipalities of Poland, 2009, 10<sup>3</sup> tons)

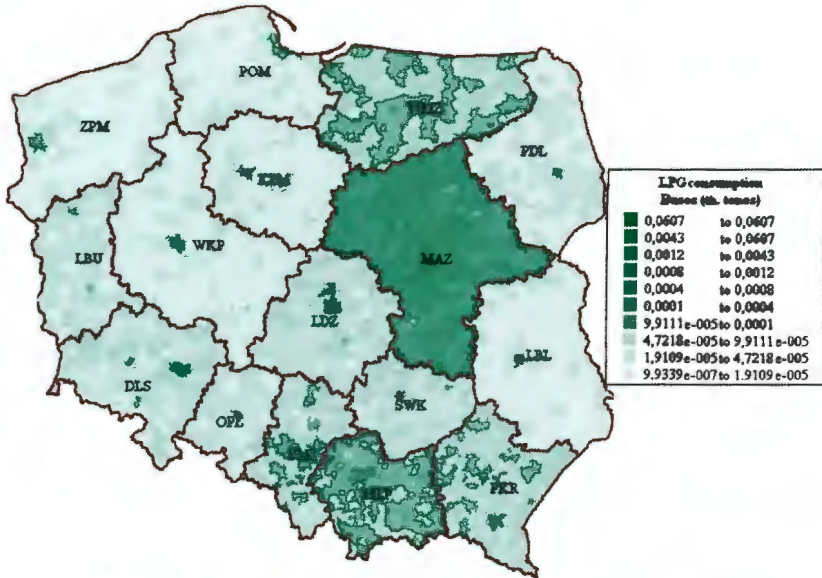


Figure 3.6. LPG consumption by buses (municipalities of Poland, 2009, 10<sup>3</sup> tons)

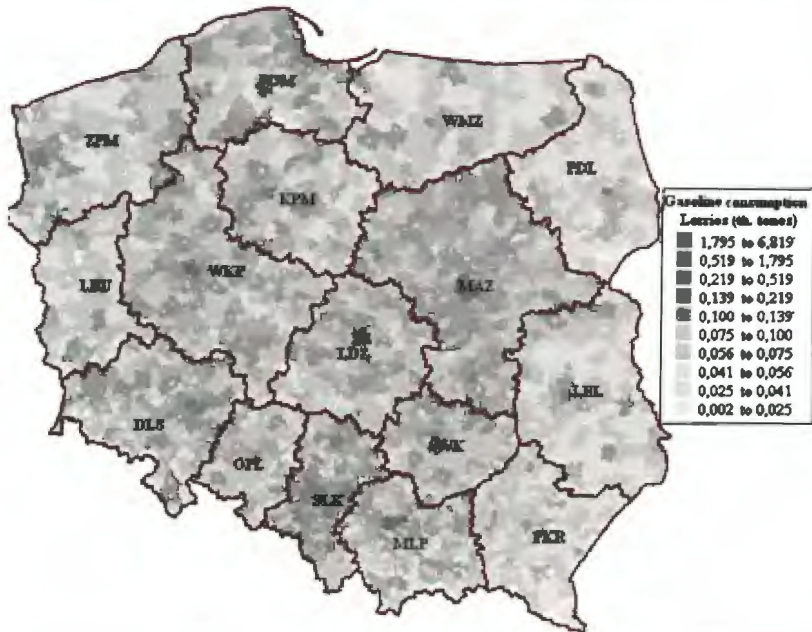


Figure 3.7. Gasoline consumption by lorries (municipalities of Poland, 2009, 10<sup>3</sup> tons)

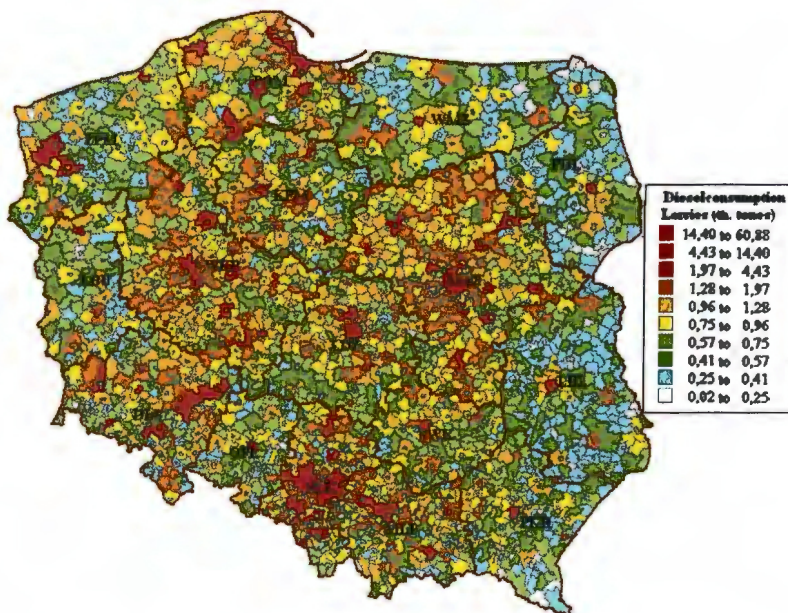


Figure 3.8. Diesel consumption by lorries (municipalities of Poland, 2009, 10<sup>3</sup> tons)

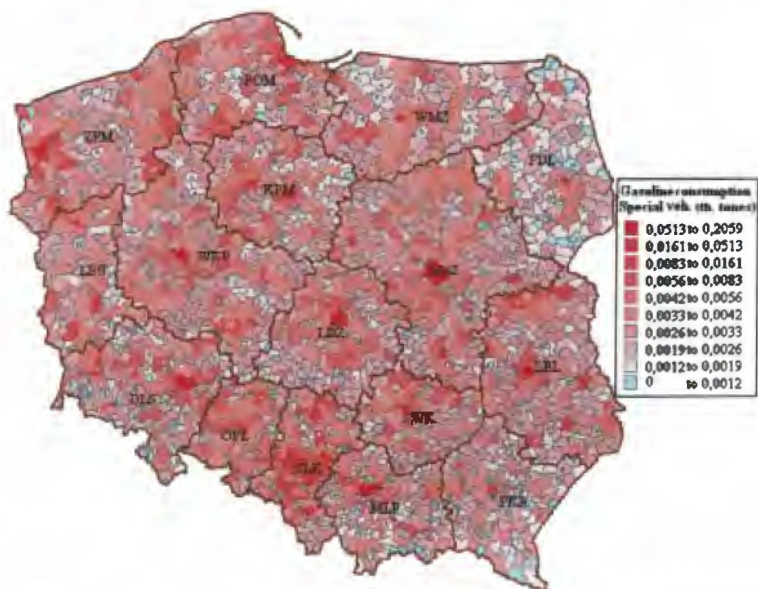
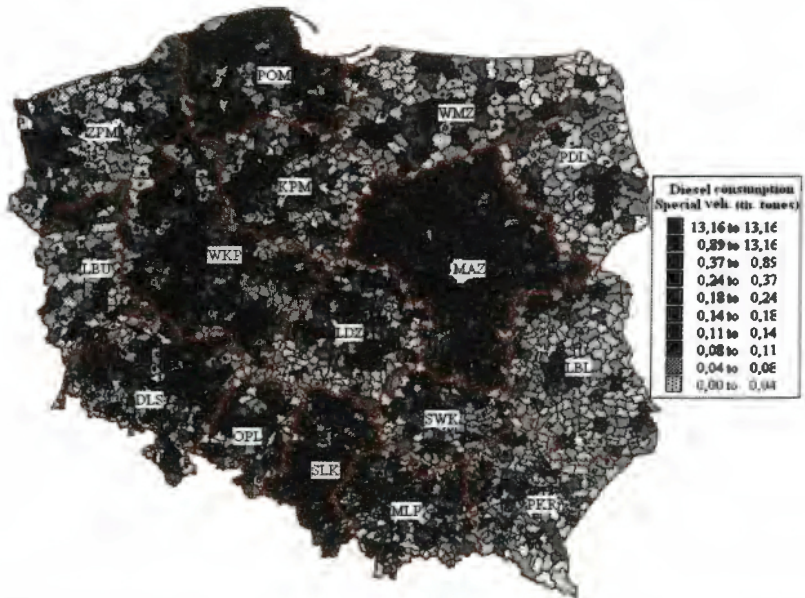


Figure 3.9. Gasoline consumption by special vehicles and tractors (municipalities of Poland, 2009, 10<sup>3</sup> tons)



**Figure 3.10.** Diesel consumption by special vehicles and tractors (municipalities of Poland, 2009,  $10^3$  tons)



**Figure 3.11.** Automobile roads' capacity (Poland, 2009)

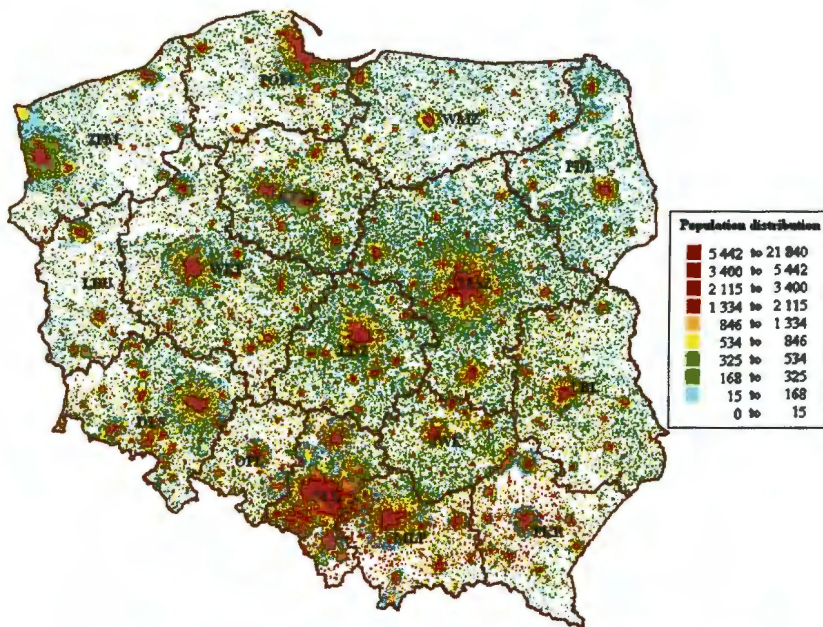


Figure 3.12. Spatial distribution of population (municipalities of Poland, 2009)

Table 3.1. Road motor vehicles by age groups (in %)

age in years	passenger cars	buses	lorries	road tractors
total	100	100	100	100
up to 2	5	4.80	7.6	14.7
3 to 5	6.7	5.8	8.6	14.7
6 to 10	18.5	12.8	22.7	26.1
11 to 15	28	17.5	19.5	19.2
16-20	17.6	18	11.9	11.6
21 to 30	17.1	32.5	18.2	10.5
31 and on	7.1	8.6	11.5	3.2

Table 3.2. Fuel consumption for transport needs

Steam coal (10 <sup>3</sup> tons)	Natural gas (mln.m <sup>3</sup> )	Liquid fuels from biomass (TJ)	Coke (10 <sup>3</sup> tons)	LPG (10 <sup>3</sup> tons)	Motor gasoline (10 <sup>3</sup> tons)	Aviation gasoline (10 <sup>3</sup> tons)	Jet fuel (10 <sup>3</sup> tons)	Diesel oil (10 <sup>3</sup> tons)	Light fuel oil (10 <sup>3</sup> tons)	Heave fuel oil (10 <sup>3</sup> tons)
94	432	4006	13	1643	4167	3	402	8423	17	128

**Table 3.3. Fuel consumption by transport categories**

Categories	Liquid fuels from biomass (TJ)	LPG (10 <sup>3</sup> tons)	Diesel oil (10 <sup>3</sup> tons)
Railways	0	0	125
Road transport	18501	1719	8219
Air transport	0	0	0
Inland navigation	0	0	6

Voivodeship	Table 3.4. Road motor vehicles in total										
	Motorcycles	Passenger cars	Buses	Special purpose vehicles	Lorries		Road tractor	Agricultural tractors	Goods and special trailers	Agricultural trailers	Semi-trailers
					Total	Of which vans					
Dolnośląskie	53621	1246585	7490	10649	185355	11090	11089	59919	53829	11259	13122
Kujawsko-Pomorskie	67505	883039	5070	6410	130911	9184	9387	94340	46903	40575	11468
Lubelskie	63477	860850	6130	7057	126610	13218	9725	188622	40495	29287	11645
Lubuskie	31541	448660	2211	3633	64787	4833	4881	25912	21553	7692	6286
Łódzkie	68381	1090803	5688	8101	186800	20261	11564	131192	44770	22011	14409
Małopolskie	76481	1374994	9984	10662	214333	16552	12754	111333	30119	9136	15577
Mazowieckie	116440	2521971	14127	20321	463265	24874	46552	208652	110540	25944	53502
Opolskie	20304	472048	2330	3929	59869	6783	4832	40374	27598	14905	6161
Podkarpackie	79657	803877	5091	8181	117651	11449	7153	100410	23109	7355	9233
Podlaskie	29977	450109	2258	3264	67447	6457	5435	110776	18455	16559	6276
Pomorskie	49267	966076	6023	7857	155667	8030	14337	54465	38286	12269	15525
Śląskie	87176	1950557	10009	15439	266980	27032	21406	55237	38749	10737	24800
Świętokrzyskie	34781	517005	4186	4461	101892	10074	6715	82713	15276	6582	8038
Warmińsko-Mazurskie	42981	551880	3417	4436	82631	5738	6348	56599	28054	12922	7145
Wielkopolskie	103590	1677765	7083	11255	265847	18910	21988	165007	90954	68309	29808
Zachodniopomorskie	49727	678431	4318	5942	105440	6163	7116	44450	39592	9733	8313
Total	974906	16494650	95415	131597	2595485	200648	201282	1530001	668282	305275	241308



**Table 3.5. Vehicle miles travelled**

<b>Voivodeship</b>	<b>Urban buses 10<sup>3</sup> km</b>
Dolnośląskie	78 105
Kujawsko-Pomorskie	58 712
Lubelskie	94 396
Lubuskie	35 140
Łódzkie	56 226
Małopolskie	73 778
Mazowieckie	140 642
Opolskie	43 695
Podkarpackie	91 930
Podlaskie	44 513
Pomorskie	63 385
Śląskie	87 059
Świętokrzyskie	45 789
Warmińsko-Mazurskie	46 628
Wielkopolskie	74 091
Zachodniopomorskie	53 609

Voivodeship	Table 3.6. Road motor vehicles by fuel type in total														
	Passenger cars			Lorries			Road tractors			Buses			Special vehicles		
	gasoline	diesel	LPG	gasoline	diesel	LPG	gasoline	diesel	LPG	gasoline	diesel	LPG	gasoline	diesel	LPG
Dolnośląskie	792872	280346	121583	50831	117428	7344	90	10617	-	251	6431	9	1711	7466	141
Kujawsko-Pomorskie	560091	169380	138170	37053	83034	7180	92	8995	3	250	4751	3	1419	4459	91
Lubelskie	503435	184828	170735	38957	77866	8863	135	9564	-	273	5827	4	2010	4863	144
Lubuskie	304575	94951	45782	18175	43484	2205	28	4817	-	147	2030	4	897	2611	39
Łódzkie	683017	183407	221033	53542	115560	15823	192	11302	2	308	5311	11	1769	6045	193
Małopolskie	823008	271128	194865	54117	133199	14813	95	11881	2	513	8817	57	1823	7796	255
Mazowieckie	1490924	522881	485383	127382	277062	53494	436	44590	1092	592	12687	618	3411	15318	1316
Opolskie	333767	90887	43836	19262	36631	2575	38	4699	3	204	2047	3	1018	2770	52
Podkarpackie	455229	155318	112776	26576	66826	7201	50	6634	1	113	4402	19	1186	4304	115
Podlaskie	273992	101864	72949	20078	42288	4809	26	5376	-	86	2161	4	779	2394	80
Pomorskie	533098	241863	97702	37651	93468	6428	131	12963	3	254	4914	3	1316	5354	80
Śląskie	1386838	348389	211777	79540	171376	15491	251	21089	57	422	9532	18	2654	12488	245
Świętokrzyskie	316261	96761	87737	30653	56967	6480	41	6444	-	204	3880	7	1114	3073	100
Warmińsko-Mazurskie	339407	116910	86121	24391	51980	4959	50	6191	1	148	3163	19	1046	3202	86
Wielkopolskie	1147905	353866	168732	73585	178643	11449	128	21791	2	448	6578	5	2528	8308	160
Zachodniopomorskie	452068	158100	66503	32512	67996	4264	69	6991	-	283	4004	3	1458	4300	119
Total	10396487	3370879	2325684	724305	1613808	173378	1852	193944	1166	4496	86535	787	26139	94751	3216

**Table3.7. Fuel use for transport needs and in agriculture**

Voivodeship	Fuel use for transport needs				Fuel use for agriculture		
	Coal (10 <sup>3</sup> tons)	Nat. gas (TJ)	Light fuel oil (10 <sup>3</sup> tons)	Heavy fuel oil (10 <sup>3</sup> tons)	Nat. gas (TJ)	Light fuel oil (10 <sup>3</sup> tons)	Heavy fuel oil (10 <sup>3</sup> tons)
Dolnośląskie	0.00	71.00	1.00	0.00	3.00	7.00	3.00
Kujawsko-Pomorskie	0.00	34.00	0.00	0.00	3.00	7.00	1.00
Lubelskie	0.00	49.00	0.00	0.00	3.00	7.00	3.00
Lubuskie	0.00	27.00	0.00	0.00	1.00	2.00	1.00
Łódzkie	1.00	13.00	0.00	0.00	2.00	4.00	2.00
Małopolskie	0.00	1309.00	0.00	0.00	2.00	4.00	3.00
Mazowieckie	84.00	12871.00	8.00	0.00	6.00	13.00	2.00
Opolskie	0.00	7.00	0.00	0.00	2.00	4.00	2.00
Podkarpackie	0.00	105.00	0.00	0.00	1.00	2.00	2.00
Podlaskie	1.00	9.00	0.00	0.00	2.00	4.00	2.00
Pomorskie	0.00	61.00	1.00	2.00	2.00	4.00	2.00
Śląskie	2.00	116.00	1.00	2.00	3.00	7.00	2.00
Świętokrzyskie	1.00	5.00	0.00	0.00	2.00	4.00	1.00
Warmińsko-Mazurskie	0.00	14.00	0.00	0.00	3.00	7.00	2.00
Wielkopolskie	1.00	212.00	1.00	0.00	8.00	18.00	3.00
Zachodniopomorskie	2.00	87.00	2.00	126.00	2.00	4.00	2.00
Total	92	14990	14	130	45	98	33

Table 3.8. Road vehicles and tractors, in total

Territorial unit	road vehicles and tractors	motorcycles total	motorcycles, engine capacity up to 125 cm3	passenger cars	buses, total	lorries	goods and persons carrying vehicles	special purpose vehicles (including sanitary)	road tractors		agricultural tractors	mopeds
	2009	2009	2009	2009	2009	2009	2009	2009	2009		2009	2009
	[unit]	[pcs]	[pcs]	[pcs]	[pcs]	[pcs]	[unit]	[pcs]	[pcs]	[pcs]	[pcs]	[pcs]
City with district status Biła Podlaska	30 075	1 141	326	23 800	196	3 365	450	225	351	344	997	1 015
City with district status Białystok	118 772	3 847	675	92 271	719	17 634	1 976	836	1 822	1 820	1 643	3 214
City with district status Bielsko-Biała	95 705	2 231	241	76 905	427	14 358	538	666	677	677	441	1 297
City with district status Bydgoszcz	205 631	8 996	2 824	163 850	1 095	27 515	1 745	1 318	1 808	1 798	1 049	5 042
City with district status Bytom	71 922	2 341	263	62 164	251	6 411	867	337	244	243	174	2 350
City with district status Capital City Warszawa	1 118 781	26 124	3 201	914 524	4 506	153 690	4 454	6 796	7 487	7 462	5 645	14 360
City with district status Chełm	33 312	1 639	498	25 826	274	3 631	410	285	329	326	1 328	896
City with district status Chorzów	42 795	1 328	151	36 290	94	4 551	656	228	174	173	130	1 078
City with district status Częstochowa	122 029	5 137	1 410	96 588	497	16 835	791	943	1 112	1 110	917	3 148
City with district status Dąbrowa Górnicza	65 678	1 868	268	54 334	250	7 503	703	614	537	534	572	1 229
City with district status Elbląg	55 293	2 953	813	43 810	392	6 805	600	411	332	330	590	937
City with district status Gdańsk	261 335	4 612	676	212 639	1 381	36 664	2 336	1 628	3 273	3 262	1 138	3 211

City with district status Gdynia	136 380	3 945	1 940	109 153	500	19 356	540	753	1 905	1 903	680	5 540
City with district status Gliwice	105 904	2 843	373	87 940	561	12 321	663	778	843	838	618	2 080
City with district status Gorzów Wielkopolski	62 128	2 433	471	49 825	283	7 932	502	427	641	640	587	2 618
City with district status Grudziądz	41 696	2 411	784	32 955	217	5 221	228	271	243	241	378	1 159
City with district status Jastrzębie-Zdrój	44 827	1 677	268	38 506	244	3 276	366	196	130	128	798	1 605
City with district status Jaworzno	45 364	2 128	400	37 537	459	4 385	704	248	237	236	370	1 571
City with district status Jelenia Góra	45 414	1 441	239	37 194	294	5 775	327	332	172	171	206	739
City with district status Kalisz	62 733	1 168	195	50 680	332	8 744	513	437	572	571	800	1 142
City with district status Katowice	190 122	4 478	526	148 816	1 548	29 758	3 172	1 667	3 238	3 200	617	2 857
City with district status Kielce	96 422	2 276	570	75 085	567	16 021	1 125	799	898	897	776	1 405
City with district status Konin	42 190	1 183	265	34 558	336	4 889	333	254	259	259	711	869
City with district status Koszalin	50 199	958	164	39 657	295	8 127	418	430	422	420	310	963
City with district status Kraków	417 620	10 475	1 795	340 884	2 254	55 250	3 668	2 720	3 214	3 201	2 823	5 350
City with district status Krosno	24 189	1 039	213	18 891	309	3 276	194	272	95	95	307	808
City with district status Legnica	45 450	862	111	37 546	265	5 654	447	422	320	320	381	1 112
City with district status Leszno	33 517	1 011	151	26 304	322	5 121	532	196	244	244	319	1 004
City with district status Łódź	345 062	5 650	517	286 926	1 341	45 164	8 344	1 821	2 488	2 414	1 672	5 242

City with district status Łomża	28 566	937	177	22 237	171	4 083	228	163	208	204	767	568
City with district status Lublin	167 755	5 006	930	129 609	1 364	24 916	1 524	1 393	2 317	2 282	3 083	2 433
City with district status Mysłowice	34 048	907	68	28 930	210	3 390	583	211	185	185	215	1 275
City with district status Nowy Sącz	39 368	1 086	231	30 337	380	6 237	312	281	554	551	493	1 085
City with district status Olsztyn	90 185	2 275	379	68 072	576	15 322	469	640	2 521	2 519	779	983
City with district status Opole	73 525	1 628	215	58 384	512	10 390	978	663	1 039	1 038	909	1 511
City with district status Ostrołęka	23 276	524	137	18 451	216	2 924	135	192	713	713	256	516
City with district status Piekary Śląskie	26 061	816	94	21 953	141	2 654	241	115	154	154	228	1 239
City with district status Piotrków Trybunalski	39 635	1 634	370	30 821	423	5 385	358	313	336	336	723	2 089
City with district status Płock	73 542	1 946	503	57 161	592	10 697	802	809	1 107	1 105	1 230	974
City with district status Poznań	355 890	10 189	1 753	280 845	1 052	55 881	3 186	2 120	2 902	2 892	2 900	5 110
City with district status Przemyśl	30 390	1 490	352	24 626	299	3 326	547	164	119	119	366	901
City with district status Radom	100 991	2 403	429	79 620	699	14 787	863	648	1 733	1 721	1 101	1 704
City with district status Ruda Śląska	60 617	2 074	230	52 134	244	5 294	1 299	429	212	208	230	2 295
City with district status Rybnik	71 416	2 363	306	59 735	362	7 487	968	415	505	504	549	3 838
City with district status Rzeszów	88 010	2 596	411	67 041	587	15 133	583	697	1 005	1 002	951	1 984
City with district status Siedlce	38 324	1 348	240	29 245	234	5 629	576	260	593	569	1 015	1 061

City with district status Siemianowice Śląskie	30 091	968	118	25 826	44	2 782	486	176	181	180	114	2 280
City with district status Skierniewice	24 887	900	161	19 654	115	3 198	339	181	218	217	621	964
City with district status Słupsk	44 189	1 140	238	34 518	406	6 881	476	426	322	320	496	785
City with district status Sopot	31 182	826	379	24 666	136	4 471	111	211	785	784	86	345
City with district status Sosnowiec	105 472	2 600	362	90 478	638	10 347	1 459	547	596	593	266	1 735
City with district status Suwałki	32 500	1 419	336	25 549	194	4 027	239	209	352	351	750	1 113
City with district status Świętochłowice	20 556	706	59	17 260	45	2 127	270	82	299	298	37	602
City with district status Świnoujście	17 124	1 007	205	13 877	109	1 833	108	118	58	58	122	730
City with district status Szczecin	194 884	5 269	710	158 583	840	25 530	513	1 455	2 235	2 228	972	2 501
City with district status Tarnobrzeg	23 791	982	243	18 434	243	2 826	214	230	166	165	910	609
City with district status Tarnów	51 510	1 717	315	41 382	343	6 801	318	441	303	303	523	1 475
City with district status Toruń	102 086	4 722	1 448	79 608	764	14 614	1 086	868	818	815	692	1 512
City with district status Tychy	67 875	1 684	172	53 195	266	8 935	1 156	444	2 696	2 688	634	1 210
City with district status Włocławek	54 070	2 874	935	42 316	412	7 151	535	395	297	297	597	1 383
City with district status Wrocław	379 210	9 941	1 563	303 761	1 922	54 499	2 412	3 234	3 430	3 425	2 423	4 703
City with district status Zabrze	78 018	2 689	296	65 705	168	8 428	1 030	468	401	399	159	2 761
City with district status Zamość	31 006	773	218	23 798	338	4 207	392	324	202	202	1 358	533

City with district status Zielona Góra	64 565	1 804	344	50 553	413	9 784	363	523	1 042	1 039	446	926
City with district status Żory	32 421	832	101	27 805	208	2 867	358	164	122	122	423	1 242
District aleksandrowski	31 188	1 385	531	22 292	58	3 130	272	144	164	164	4 011	2 368
District augustowski	34 087	2 065	619	22 208	100	3 008	334	169	136	135	6 401	1 342
District bartoszycki	33 897	2 429	906	24 002	222	3 083	362	192	221	221	3 748	1 427
District będziński	81 437	2 234	317	65 916	283	9 484	1 471	635	871	865	2 014	2 401
District belchatowski	64 324	2 938	708	49 289	507	5 985	551	447	501	496	4 657	4 903
District białobrzescki	28 962	1 154	419	18 189	81	5 600	772	148	140	133	3 650	946
District białogardzki	25 342	2 184	964	18 515	102	2 818	300	162	119	108	1 442	1 116
District białostocki	79 593	3 659	713	54 224	138	9 266	890	337	420	418	11 549	2 832
District białski	71 933	4 745	2 073	48 456	153	4 974	702	337	637	630	12 631	4 892
District bielski	88 196	3 558	700	71 226	200	9 681	914	453	427	427	2 651	3 020
District bielski	38 710	1 510	323	24 821	123	3 496	312	173	347	347	8 240	1 450
District bieruńsko-łędziński	29 955	1 103	120	24 747	82	2 668	443	268	160	160	927	2 003
District bieszczadzki	15 716	868	238	11 614	58	2 043	427	128	45	43	960	388
District biłgorajski	62 315	1 486	378	40 993	156	5 446	658	267	589	589	13 378	2 041
District bocheński	54 155	2 520	725	40 218	174	5 234	312	276	307	306	5 426	3 068
District bolesławiecki	32 632	848	231	27 547	182	2 750	93	196	273	272	834	1 359
District braniewski	23 568	1 971	902	16 541	68	2 195	95	137	93	93	2 563	1 869
District brodnicki	51 227	4 683	2 439	34 412	234	4 734	269	201	329	328	6 634	2 701



District brzeski	48 896	2 842	975	36 048	185	4 831	363	307	465	461	4 218	3 230
District brzeski	55 971	1 765	374	44 117	213	5 931	788	325	340	339	3 280	2 097
District brzeziński	23 352	1 548	691	15 184	59	3 071	207	154	244	244	3 092	907
District brzozowski	34 438	3 145	1 058	24 040	117	2 487	230	204	109	109	4 336	1 717
District buski	53 573	3 145	1 275	32 371	292	8 221	1 036	342	480	479	8 722	2 072
District bydgoski	64 200	3 886	1 405	46 866	188	7 920	488	299	532	532	4 509	3 496
District bytowski	46 462	2 262	850	33 943	153	4 842	368	289	321	319	4 652	2 845
District chełmiński	25 735	889	234	19 616	86	2 557	123	121	229	229	2 237	1 456
District chełmski	49 983	5 276	2 368	31 666	156	3 217	417	167	191	189	9 310	2 705
District chodzieski	35 902	3 163	1 572	25 579	75	4 202	317	191	301	301	2 391	1 498
District chojnicki	49 753	2 338	921	37 724	254	5 259	314	263	430	430	3 485	2 682
District choszczeński	29 649	2 683	1 318	20 794	107	2 720	294	157	125	124	3 063	1 540
District chrzanowski	66 650	3 243	676	54 456	333	6 531	641	396	480	476	1 211	2 462
District ciechanowski	54 589	2 724	963	37 841	343	6 021	506	228	565	565	6 867	2 077
District cieszyński	97 572	3 057	384	79 690	377	9 277	481	566	761	761	3 844	3 583
District czarnkowsko-trzcianecki	59 019	5 024	2 292	42 467	161	5 755	583	282	396	394	4 934	3 134
District częstochowski	87 917	7 002	3 025	63 713	209	9 693	653	646	750	750	5 904	4 358
District człuchowski	32 386	2 108	963	23 971	104	3 282	273	145	240	240	2 536	2 415
District dąbrowski	35 624	3 018	1 255	24 247	132	3 013	254	162	103	102	4 949	2 231
District dębicki	73 582	4 841	1 762	51 777	270	8 068	423	395	1 256	1 247	6 975	3 490
District drawski	34 048	3 838	1 805	23 588	125	3 598	466	212	214	205	2 473	1 874

District działowski	37 086	2 678	1 194	26 260	111	3 596	312	163	397	396	3 881	2 453
District dzierzoniowski	51 137	1 963	433	40 243	191	6 313	456	277	211	211	1 939	1 291
District elbląski	34 002	2 373	953	23 821	90	3 064	259	181	160	160	4 313	1 723
District etcki	35 038	2 059	594	25 693	144	4 007	251	223	219	218	2 693	1 571
District garwoliński	66 069	2 966	900	46 096	341	6 875	565	349	379	378	9 063	2 577
District gdański	66 193	2 720	1 734	46 564	325	9 617	295	475	2 737	2 730	3 754	2 038
District giżycki	29 995	1 413	373	22 912	132	3 267	291	188	82	82	2 001	1 278
District gliwicki	58 163	1 639	212	48 521	112	4 765	653	282	457	457	2 387	3 485
District głogowski	42 954	1 267	286	35 092	241	4 067	423	203	255	254	1 829	1 539
District głubczycki	33 914	889	227	25 181	153	3 546	574	210	164	163	3 771	1 281
District gnieźnieński	87 341	5 542	2 267	64 872	370	8 770	739	469	577	577	6 741	3 911
District gołdapski	14 467	1 003	329	10 307	79	1 354	135	135	35	35	1 554	928
District goleniowski	49 415	3 331	1 400	35 493	189	6 328	195	300	559	558	3 215	2 294
District golubsko- dobrzyński	31 709	2 256	1 006	21 645	45	2 739	219	166	267	267	4 591	1 560
District gorlicki	56 965	6 082	2 352	40 588	218	4 257	275	278	159	159	5 383	3 222
District górowski	23 241	519	156	18 205	101	2 323	57	124	95	95	1 874	1 406
District gorzowski	42 861	3 060	1 117	31 426	115	4 921	385	252	300	300	2 787	2 196
District gostyński	35 834	2 467	1 265	24 750	117	3 719	322	209	225	225	4 347	1 155
District gostyński	51 751	1 408	412	38 175	92	4 936	346	180	485	483	6 475	3 292
District grajewski	27 940	989	233	18 024	69	2 334	232	114	317	316	6 093	908
District grodziski	56 948	1 790	272	39 902	262	9 757	145	415	3 495	3 493	1 327	1 998
District grodziski	36 590	1 850	701	26 255	96	3 776	285	171	359	358	4 083	2 178

District grójecki	93 638	3 070	924	56 888	308	20 242	1 556	307	659	647	12 164	2 435
District grudziądzki	25 402	1 001	358	18 364	35	2 255	143	99	112	112	3 536	1 698
District gryficki	34 077	1 940	803	24 884	293	3 885	106	244	305	305	2 526	1 466
District gryfiński	50 657	3 547	1 538	37 358	176	5 058	289	302	338	338	3 878	2 171
District hajnowski	27 838	1 617	360	18 690	67	2 173	304	135	105	105	5 051	1 332
District hrubieszowski	38 260	843	269	23 978	146	2 487	348	174	143	143	10 489	1 583
District iławski	49 615	2 687	1 079	35 983	166	4 955	222	250	440	440	5 134	3 394
District inowrocławski	85 595	3 774	1 257	62 862	473	9 685	656	349	851	850	7 601	4 297
District janowski	27 665	1 609	578	15 954	84	2 575	163	138	206	205	7 099	1 017
District jarociński	46 321	933	215	37 495	74	3 785	317	185	394	394	3 455	2 050
District jarosławski	63 048	4 570	1 847	43 585	301	6 573	1 028	327	389	388	7 303	2 843
District jasielski	72 468	4 957	1 312	54 265	246	8 859	22	2 141	252	119	1 748	3 147
District jaworski	28 371	774	264	22 593	50	2 500	213	145	171	171	2 138	1 327
District jędrzejowski	56 086	2 744	966	36 798	286	5 480	708	309	705	704	9 764	2 459
District jeleniogórski	30 385	574	80	25 934	88	3 005	142	152	119	119	513	1 053
District kaliski	64 803	1 751	529	43 190	183	8 581	757	166	412	412	10 520	2 428
District kamiennogórski	20 218	840	100	16 501	102	2 012	94	115	120	120	528	756
District kamieński	27 899	1 662	635	20 522	195	3 330	182	221	211	211	1 758	1 326
District kartuski	78 042	4 078	2 650	56 694	405	10 433	375	508	490	489	5 429	3 872
District kazimierski	28 880	1 146	428	16 034	220	4 971	688	167	127	125	6 215	775
District kędzierzyńsko-kozielski	52 699	1 683	298	41 628	208	4 569	415	449	598	597	3 564	3 006

District kępiński	39 901	1 393	423	29 682	47	4 785	212	161	220	220	3 613	1 846
District kętrzyński	30 104	948	211	24 216	125	2 482	183	128	102	102	2 103	1 465
District kielecki	115 657	5 751	1 927	80 893	745	15 004	1 425	613	1 435	1 434	11 216	3 550
District kłobucki	63 739	4 872	2 275	45 981	168	7 587	465	346	449	449	4 336	3 459
District kłodzki	91 124	4 518	1 253	71 777	354	9 557	1 056	617	371	371	3 930	2 668
District kluczborski	38 447	1 222	256	30 119	118	3 378	376	260	229	226	3 121	2 538
District kolbuszowski	36 872	3 676	1 450	25 284	120	3 757	595	176	190	190	3 669	2 007
District kolneński	25 345	779	240	15 237	49	1 536	117	80	182	182	7 482	862
District kołobrzegi	40 360	1 850	611	30 693	296	5 018	532	282	206	204	2 015	1 253
District kolski	61 674	4 918	2 330	42 547	156	5 081	426	216	367	366	8 389	3 109
District konecki	44 135	2 210	752	33 041	252	5 433	593	269	249	249	2 681	2 107
District koniński	91 750	6 977	3 291	63 995	213	7 413	578	565	520	516	12 067	4 873
District kościański	53 595	1 534	294	40 675	123	6 046	447	201	515	514	4 501	3 228
District kościerski	42 242	3 050	1 458	30 013	150	4 365	179	213	749	747	3 698	2 851
District koszaliński	37 470	2 574	958	27 028	163	4 405	479	208	151	147	2 941	1 718
District kozienski	44 994	2 014	680	30 766	230	6 103	756	201	256	249	5 424	1 542
District krakowski	176 791	8 449	2 664	127 512	1 074	25 028	2 309	888	956	945	12 884	5 359
District krapkowicki	36 392	1 492	246	29 013	64	2 995	383	278	274	274	2 276	3 230
District kraśnicki	62 454	4 044	1 567	40 908	423	6 225	857	270	269	268	10 315	1 785
District krasnostawski	38 736	948	212	25 449	138	2 859	255	226	322	317	8 794	1 686
District krośniński	55 192	4 265	1 005	41 831	158	4 304	732	227	230	230	4 177	3 524
District krośniński	34 371	2 189	837	27 009	75	3 184	265	189	187	187	1 538	2 946

District krotoszyński	50 973	1 856	665	37 256	128	4 751	318	206	253	253	6 523	2 558
District kutnowski	71 241	5 277	2 718	48 007	253	7 711	705	386	722	722	8 885	1 873
District kwidzyński	46 145	1 884	771	35 379	205	4 743	219	284	527	527	3 123	2 327
District łancucki	41 964	2 632	632	29 957	261	4 122	248	200	302	301	4 490	2 642
District łaski	37 178	2 304	829	26 519	106	3 855	268	239	224	224	3 931	1 460
District łęborski	32 142	973	236	25 287	154	4 253	651	250	163	163	1 062	1 477
District łęczycy	42 349	1 948	841	25 041	144	6 955	458	159	316	316	7 786	1 423
District łęczynski	36 232	2 492	1 065	25 345	155	3 183	358	195	147	131	4 715	1 426
District legionowski	61 165	1 497	180	42 702	485	9 778	124	448	5 246	5 245	1 009	1 757
District legnicki	28 391	724	182	22 047	50	2 694	157	171	261	261	2 444	1 476
District leski	19 254	1 793	638	13 382	98	2 244	427	185	33	33	1 519	1 386
District leszczyński	37 145	827	162	27 516	87	4 190	343	166	239	239	4 120	1 914
District lezajski	34 913	3 265	1 193	23 022	158	2 727	501	172	188	187	5 381	2 242
District lidzbarski	24 384	2 025	775	16 952	145	2 647	196	145	114	114	2 356	1 136
District limanowski	70 987	1 277	260	52 831	429	9 088	637	414	805	794	6 143	4 884
District lipnowski	42 038	3 011	1 422	29 225	181	3 682	366	169	219	219	5 551	2 422
District lipski	29 019	1 234	465	18 210	54	3 263	496	102	229	226	5 927	991
District łobeski	22 647	2 101	1 045	15 988	51	2 075	111	119	150	150	2 163	1 391
District łódzki wschodni	44 957	1 893	415	33 055	178	6 019	556	305	416	412	3 091	1 653
District łomżyński	36 189	1 357	333	22 205	58	2 812	206	128	104	104	9 525	1 247
District łosiecki	24 585	765	237	15 700	95	2 385	387	146	452	452	5 042	735
District łowicki	60 724	4 065	1 676	37 871	188	7 283	602	300	460	459	10 557	1 986

District lubaczowski	29 431	3 141	1 641	18 986	61	2 152	278	94	73	73	4 924	1 456
District lubański	31 141	1 911	367	24 945	171	3 013	88	209	118	118	774	1 555
District lubartowski	49 875	3 162	1 167	33 619	291	4 639	461	314	190	190	7 660	2 485
District lubelski	102 708	5 815	2 027	65 432	304	11 248	1 343	508	596	588	18 805	2 625
District lubiński	49 047	964	117	41 388	478	4 687	377	296	281	280	953	1 369
District lubliniecki	48 371	3 683	1 352	36 631	133	4 319	267	332	486	485	2 787	3 520
District łukowski	66 768	3 557	1 282	42 883	186	6 660	494	287	1 101	1 097	12 094	3 069
District lwówecki	22 505	385	77	18 848	39	2 039	20	157	52	52	985	982
District makowski	31 450	765	225	22 677	26	3 221	225	153	545	545	4 063	1 110
District malborski	34 717	1 910	744	25 806	133	3 699	214	215	221	221	2 729	1 238
District miechowski	37 637	1 450	532	22 076	153	5 209	439	228	450	450	8 071	1 262
District międzychodzki	24 875	1 600	656	17 623	113	2 913	231	127	315	313	2 184	1 844
District międzyrzecki	37 092	1 930	642	27 707	123	4 047	498	277	341	341	2 667	2 146
District mielecki	71 520	3 760	1 233	51 955	288	7 131	411	372	615	612	7 399	3 829
District miłowski	50 118	1 766	189	40 888	127	5 388	729	359	585	584	1 005	2 408
District milicki	25 252	1 702	720	18 010	78	3 037	103	148	212	212	2 065	1 738
District miński	84 041	3 943	1 121	59 945	545	12 313	884	634	1 175	1 173	5 486	3 414
District mławski	47 487	2 658	1 235	32 357	190	5 104	417	234	622	612	6 322	1 880
District mogileński	31 470	2 131	1 111	21 779	85	2 909	233	155	373	373	4 038	1 850
District moniecki	26 406	985	190	15 305	42	1 970	219	74	123	123	7 907	1 054
District mrągowski	25 764	1 561	533	19 282	110	2 752	209	147	162	162	1 750	1 464
District myslenicki	74 321	4 472	1 560	53 956	519	9 299	890	397	435	409	5 243	2 331

District myśliborski	40 929	2 733	1 038	30 039	161	4 275	308	246	546	544	2 929	1 906
District myszkowski	52 742	2 574	1 011	39 405	197	6 911	437	292	549	549	2 814	2 172
District nakielski	49 854	3 335	1 367	35 766	246	4 610	335	250	623	621	5 024	2 902
District namysłowski	26 748	561	101	21 257	86	2 415	290	131	129	128	2 169	1 182
District nidzicki	17 917	1 146	426	12 518	62	1 738	276	104	125	125	2 224	1 436
District nizański	32 561	2 947	1 087	22 590	65	2 913	162	184	110	110	3 752	1 568
District nowodworski	59 483	1 849	380	40 500	288	9 988	412	426	3 439	3 433	2 993	2 306
District nowodworski	18 752	524	120	14 451	28	1 779	137	113	76	76	1 781	1 014
District nowomiejski	28 516	2 124	1 049	19 805	63	2 407	169	138	225	224	3 754	2 605
District nowosądecki	87 812	3 270	824	66 032	275	9 287	719	350	758	758	7 840	3 902
District nowosolski	43 279	2 105	579	33 945	238	4 673	327	241	328	328	1 749	2 721
District nowotarski	77 123	1 842	454	58 161	535	8 169	575	447	423	423	7 546	2 136
District nowotomyski	50 791	2 810	1 149	37 624	105	5 674	442	296	702	702	3 580	2 943
District nyski	82 369	3 048	782	63 853	411	8 731	1 275	523	565	565	5 238	3 457
District obornicki	40 834	2 934	1 240	29 510	106	4 638	474	219	518	518	2 909	1 895
District olawski	43 747	1 741	420	34 191	183	4 699	302	281	287	287	2 365	1 821
District olecki	19 959	1 570	554	14 597	62	1 954	140	128	84	84	1 564	1 031
District oleski	46 928	3 324	1 379	34 607	87	3 945	246	241	269	268	4 455	2 400
District oleśnicki	60 672	2 391	690	45 855	126	7 843	279	330	461	461	3 666	2 570
District olkuski	64 379	2 046	428	48 639	403	7 995	1 331	491	787	781	4 018	2 501
District olsztyński	64 352	3 525	1 085	48 013	262	7 359	446	405	318	316	4 470	2 939

District opatowski	39 662	2 136	1 829	25 000	58	3 811	422	131	388	388	8 138	1 027
District opoczyński	44 467	1 948	552	31 454	155	4 242	350	195	420	420	6 053	2 015
District opolski	42 879	2 412	874	25 821	315	6 072	573	210	206	206	7 843	1 418
District opolski	81 231	1 922	359	65 875	208	8 380	923	470	507	498	3 869	4 113
District ostródzki	54 779	3 080	974	40 802	272	6 111	527	327	295	295	3 892	3 031
District ostrolęcki	54 836	869	258	40 622	220	5 593	527	234	608	603	6 690	2 418
District ostrowiecki	49 400	1 904	519	37 723	265	4 816	257	249	352	351	4 090	3 666
District ostrowski	45 512	1 083	324	32 342	79	4 720	435	258	673	652	6 357	1 911
District ostrowski	98 927	4 547	1 741	74 982	311	10 879	626	353	471	471	7 384	4 284
District ostrzeszowski	38 730	1 589	624	28 237	56	3 761	212	133	305	305	4 649	2 852
District oświęcimski	81 646	3 290	546	67 451	459	6 680	719	398	412	412	2 956	3 153
District otwocki	70 970	2 707	532	51 290	518	11 370	163	617	1 670	1 670	2 798	2 690
District pabianicki	67 050	3 040	646	52 058	124	8 437	1 454	316	322	303	2 753	1 903
District pajęczański	35 058	2 420	1 092	23 165	111	4 031	281	186	513	512	4 632	1 997
District parczewski	24 089	1 707	685	15 898	42	1 767	143	129	122	120	4 424	2 976
District piaseczyński	83 417	2 238	260	66 770	222	11 353	305	473	938	937	1 423	3 309
District piłski	83 711	6 026	2 415	59 431	491	10 083	840	589	1 146	1 141	5 945	3 102
District pińczowski	29 315	1 336	459	17 389	157	4 422	577	155	231	230	5 625	1 101
District piotrkowski	55 925	2 357	582	38 240	220	5 440	424	363	455	455	8 850	4 365
District piski	27 887	1 992	734	20 478	126	2 578	210	156	139	139	2 418	1 442
District pleszewski	46 655	718	165	35 807	81	5 179	432	239	387	387	4 244	1 687
District płocki	94 936	6 686	3 126	62 476	211	10 048	1 154	415	950	946	14 150	2 649



District płoński	64 350	3 436	1 331	42 452	201	8 275	550	293	521	521	9 172	2 695
District poddębicki	34 199	2 372	1 141	21 200	103	3 983	414	165	96	96	6 280	1 251
District policki	34 478	1 289	217	27 774	130	4 126	113	268	233	230	658	1 276
District polkowicki	29 009	768	156	23 332	148	2 592	166	177	430	428	1 562	1 451
District poznański	215 780	8 618	2 208	159 194	704	31 729	1 996	1 108	5 710	5 707	8 717	7 940
District proszowicki	36 544	1 542	639	21 239	181	6 745	555	243	213	204	6 381	1 112
District prudnicki	35 092	1 188	260	25 911	143	2 641	276	179	280	279	4 750	1 679
District pruszkowski	94 920	3 354	442	71 436	289	14 955	336	876	2 244	2 244	1 766	2 438
District przasnyski	31 593	481	95	23 753	161	2 980	225	139	558	558	3 521	1 043
District przemyski	39 037	3 039	1 011	27 630	122	2 887	456	114	127	127	5 118	2 029
District przeworski	40 479	4 121	1 859	27 214	63	3 290	649	216	178	178	5 397	2 048
District przysuski	33 859	1 104	330	22 080	75	5 299	560	134	272	271	4 895	907
District pszczyński	62 168	1 889	203	49 727	206	6 325	740	425	441	441	3 155	3 408
District pucki	43 283	1 974	1 293	33 340	212	5 047	158	265	282	281	2 163	2 605
District puławski	65 835	3 482	1 066	46 718	407	7 313	981	372	397	394	7 146	2 426
District pułtuski	32 850	1 360	455	22 906	171	4 131	419	171	142	139	3 969	1 498
District pyrzycki	24 827	1 555	623	17 616	99	2 236	95	149	118	118	3 054	1 099
District raciborski	52 939	1 944	344	41 926	215	4 556	678	320	473	473	3 505	5 246
District radomski	82 954	2 777	858	60 245	202	9 766	616	385	888	888	8 691	3 039
District radomszczański	68 684	3 313	987	48 054	219	9 179	550	416	567	566	6 936	4 087
District radziejowski	30 262	1 445	658	20 525	104	2 184	227	104	260	260	5 640	2 584
District radzyński	39 101	2 401	937	25 601	161	3 031	313	225	504	504	7 178	1 839

District rawicki	41 481	896	217	30 869	137	4 200	414	192	366	366	4 821	2 109
District rawski	39 345	2 378	1 064	23 201	110	7 192	353	169	325	325	5 970	1 466
District ropczycko-sędziszowski	39 801	3 802	1 403	26 898	131	3 293	193	211	395	395	5 071	2 851
District rybnicki	40 676	1 379	176	34 319	91	3 319	339	161	328	328	1 079	3 707
District rycki	38 547	2 673	1 026	26 811	123	3 371	417	221	222	221	5 126	1 915
District rypiński	27 509	1 695	787	19 355	50	2 244	171	152	211	210	3 802	1 993
District rzeszowski	92 627	7 587	2 192	63 159	238	10 553	989	468	500	500	10 122	4 711
District sandomierski	62 680	3 225	1 264	35 999	238	12 606	920	255	575	571	9 782	1 202
District sanocki	46 402	3 206	1 063	33 401	468	5 088	800	354	197	196	3 688	1 827
District sejneński	17 043	2 200	875	10 043	28	978	197	76	75	75	3 643	1 011
District sępoleński	24 304	1 180	451	17 853	89	2 167	199	104	128	128	2 783	1 567
District siedlecki	55 620	2 555	919	35 451	59	5 336	517	201	644	609	11 374	2 335
District siemiatycki	32 083	1 464	495	19 939	145	2 613	224	130	297	297	7 495	1 057
District sieradzki	87 224	5 085	2 184	56 583	279	10 929	732	406	583	581	13 359	2 755
District sierpecki	50 841	3 797	2 009	35 231	213	4 215	418	231	368	368	6 786	1 497
District skarżyski	39 060	1 942	439	29 766	382	5 584	680	427	155	154	804	1 228
District skierniewicki	29 345	1 761	690	17 994	21	3 067	235	172	217	217	6 113	1 294
District sławieński	29 226	1 463	538	22 279	114	3 102	226	176	130	130	1 962	1 832
District ślubicki	27 345	2 326	933	20 217	110	2 680	206	184	368	367	1 460	1 778
District słupecki	43 066	3 235	1 625	29 648	97	3 746	332	201	227	224	5 912	1 990
District słupecki	47 003	2 528	824	35 346	186	5 060	444	274	274	265	3 334	2 282
District sochaczewski	64 228	3 951	1 605	43 842	179	9 235	1 095	363	1 413	1 412	5 245	2 188

District sookołowski	40 689	1 264	446	25 958	183	4 233	278	213	399	399	8 439	1 521
District sokółski	46 460	2 859	743	28 064	105	3 559	420	188	185	185	11 500	1 530
District średzki	37 376	2 060	813	27 012	82	4 692	392	163	211	210	3 156	2 212
District średzki	32 006	1 408	422	23 964	162	3 030	94	157	456	456	2 829	1 406
District śremski	37 437	1 818	637	27 787	122	3 938	347	197	491	491	3 084	2 648
District stalowowolski	50 681	3 320	971	37 802	217	5 299	552	298	330	329	3 415	1 964
District starachowicki	54 826	2 124	557	40 447	338	7 230	864	304	587	583	3 796	1 739
District stargardzki	62 647	3 951	1 525	46 740	424	6 927	385	403	429	428	3 773	2 659
District starogardzki	63 174	3 421	2 162	48 136	281	6 255	237	401	484	484	4 113	4 281
District staszowski	54 540	3 545	1 391	37 569	292	5 800	550	280	268	268	6 786	1 632
District strzelecki	40 389	1 582	281	32 103	127	2 948	259	200	457	457	2 972	3 912
District strzelecko-drezdenecki	35 381	2 922	1 267	25 650	142	3 692	314	184	335	334	2 456	1 963
District strzeliński	30 593	1 150	350	22 672	178	2 912	182	181	210	210	3 290	1 103
District strzyżowski	34 888	1 874	331	25 352	124	2 652	493	211	103	103	4 572	1 921
District sulęciński	21 968	1 934	828	16 236	78	1 907	169	162	100	100	1 551	1 282
District suski	42 653	2 196	446	31 105	164	4 777	271	260	308	307	3 843	2 304
District suwalski	26 912	1 944	647	17 705	49	1 797	154	96	124	124	5 197	953
District świdnicki	43 868	2 746	1 002	31 215	181	4 235	340	219	149	149	5 123	1 339
District świdnicki	85 334	3 176	704	66 506	375	10 332	686	464	607	607	3 874	2 667
District świdwiński	26 633	1 962	868	19 295	79	2 868	297	121	130	128	2 178	1 637
District świebodziński	31 148	1 499	394	24 379	71	2 887	209	183	238	237	1 891	1 991
District świecki	58 014	3 621	1 452	43 183	163	5 743	461	341	474	472	4 489	4 227

District szamotulski	59 520	3 240	1 239	45 135	100	5 820	493	246	612	611	4 367	3 211
District szczecinecki	31 692	921	257	25 417	141	3 610	308	155	293	290	1 155	2 144
District szczycieński	37 131	2 163	822	27 731	135	3 610	207	165	252	251	3 075	1 915
District sztumski	25 206	1 837	812	18 451	95	1 835	167	151	128	128	2 709	1 400
District szydlowiecki	24 004	1 242	495	17 719	61	2 913	323	133	188	187	1 748	1 271
District tarnobrzegi	30 922	2 741	978	21 141	89	2 648	295	141	302	302	3 860	1 414
District tarnogórski	65 004	2 398	338	52 576	260	7 278	807	455	655	651	1 382	4 203
District tarnowski	103 954	5 895	1 565	77 300	477	8 375	549	502	558	557	10 847	6 255
District tatrzański	31 407	1 290	426	22 306	402	3 541	268	335	122	120	3 411	1 225
District tczewski	67 609	3 801	2 674	50 625	521	7 540	177	526	563	560	4 032	3 007
District tomaszowski	69 695	3 966	1 271	50 039	197	8 348	531	315	597	597	6 233	3 989
District tomaszowski	50 310	849	171	34 062	273	4 299	534	204	264	260	10 359	1 562
District toruński	57 991	3 819	1 471	41 445	146	5 793	378	220	585	584	5 983	3 387
District trzebnicki	51 411	2 480	765	38 250	140	6 592	211	326	228	225	3 395	2 112
District tucholski	30 397	1 738	758	21 957	60	2 671	144	137	112	112	3 722	1 728
District turecki	58 550	4 385	2 295	41 668	212	5 106	398	256	399	399	6 524	2 417
District wąbrzeski	22 506	1 957	718	15 162	142	1 892	109	118	82	82	3 153	1 470
District wadowicki	81 799	4 129	1 011	63 025	381	9 346	438	489	374	372	4 055	2 763
District wągrowiecki	47 889	3 050	1 367	35 056	194	4 480	406	225	331	331	4 553	1 976
District wałbrzyski	84 459	3 149	567	67 081	738	11 349	1 282	580	429	428	1 133	1 243
District walecki	31 269	2 909	1 483	22 291	229	3 571	438	214	192	192	1 863	1 161

District warszawski zachodni	77 920	2 411	448	54 785	259	14 228	92	477	2 019	2 018	3 740	2 230
District wegorzewski	14 363	1 006	407	10 085	75	1 345	179	73	42	42	1 737	1 329
District węgrowski	46 598	2 830	1 178	30 083	172	5 638	513	286	356	356	7 233	1 981
District wejherowski	87 726	3 336	1 818	69 370	394	10 286	359	467	408	408	3 465	4 164
District wielicki	72 800	4 350	1 466	55 201	513	8 640	709	359	668	663	3 069	2 400
District wieluniński	51 944	2 687	998	34 030	259	6 761	479	310	473	473	7 424	1 542
District wieruszowski	30 220	1 208	392	21 541	45	3 172	196	116	210	210	3 928	1 419
District włocławski	59 323	3 999	1 881	39 612	108	5 397	459	224	180	180	9 801	3 388
District włodawski	27 815	2 624	1 319	18 467	94	2 337	396	125	99	98	4 069	1 812
District włoszczowski	27 537	1 297	455	18 890	94	2 493	229	161	284	282	4 318	1 429
District wodzisławski	81 735	2 016	260	70 242	136	6 369	722	340	624	623	2 008	6 233
District wołomiński	118 088	4 767	1 112	88 593	432	18 596	128	1 018	1 441	1 440	3 241	4 125
District wołowski	28 626	1 878	642	22 043	161	2 307	52	146	222	222	1 869	1 320
District wolsztyński	32 151	727	109	24 029	84	3 975	56	145	358	358	2 833	2 009
District wrocławski	74 410	2 663	652	55 182	154	9 597	360	425	637	636	5 752	2 594
District wrzesiński	45 116	2 044	617	33 869	110	4 696	246	208	232	232	3 957	2 391
District wschowski	22 318	839	239	17 132	68	2 462	151	123	135	135	1 559	1 310
District wysokomazowiecki	44 203	1 443	527	26 623	78	3 655	235	208	408	408	11 788	1 734
District wyszkowski	40 817	664	100	31 048	300	5 674	484	226	771	757	2 134	1 434
District ząbkowicki	41 842	2 003	605	30 781	169	4 277	485	302	266	266	4 044	1 457
District żagański	45 034	2 454	809	35 360	154	4 286	416	270	164	164	2 346	2 548

District zambrowski	26 630	903	216	16 964	123	2 506	170	148	241	241	5 745	942
District zamojski	61 124	2 047	707	38 541	170	4 553	689	242	273	272	15 298	2 035
District żarski	59 584	3 438	1 159	46 921	221	6 013	494	343	392	389	2 256	3 044
District zawierciański	58 433	1 817	370	44 429	198	6 296	511	451	426	425	4 816	2 520
District zduńskowolski	42 642	3 261	1 242	31 650	215	4 531	366	201	307	307	2 477	1 652
District zgierski	93 170	4 428	1 100	69 227	316	12 862	1 508	466	702	662	5 169	3 184
District zgorzelecki	43 490	1 051	201	36 543	230	3 859	345	335	293	293	1 179	2 046
District zielonogórski	54 562	2 608	735	42 300	120	6 319	534	275	321	320	2 619	2 716
District złotoryjski	22 655	530	88	18 554	120	2 041	181	147	118	118	1 145	990
District złotowski	38 590	2 566	1 079	28 193	131	3 632	341	192	230	229	3 646	2 201
District żniński	44 512	2 697	1 248	32 391	89	4 098	338	205	513	513	4 519	3 331
District zuromiński	26 415	1 158	482	17 422	56	2 692	173	88	92	92	4 907	1 100
District zwoleński	28 221	1 456	647	18 757	55	3 093	462	120	249	248	4 491	1 186
District żyrardowski	54 725	3 009	992	41 186	197	6 826	704	265	291	291	2 951	1 926
District żywiecki	76 826	4 575	1 024	58 519	358	9 355	412	380	508	508	3 131	2 369

## References

- GUS (2011). *Transport – wyniki działalności w 2010 r.: Informacje i opracowania statystyczne*. Główny urząd statystyczny, Warszawa. 268 p.
- GUS (2012). *Bank Danych Lokalnych: Główny Urząd Statystyczny*. Warszawa. <http://www.stat.gov.pl/bdl/>
- GUS (2010). *Zużycie paliw i nośników energii w 2009 r.*, Główny urząd statystyczny, Warszawa. 15 p.
- GUS (2010a) *Gospodarka paliwowo-energetyczna w latach 2008, 2009: Informacje i opracowania statystyczne*. Główny urząd statystyczny, Warszawa. 369 p.
- GUS (2010b) *Rocznik statystyczny województw*. Główny urząd statystyczny, Warszawa. 814 p.

