

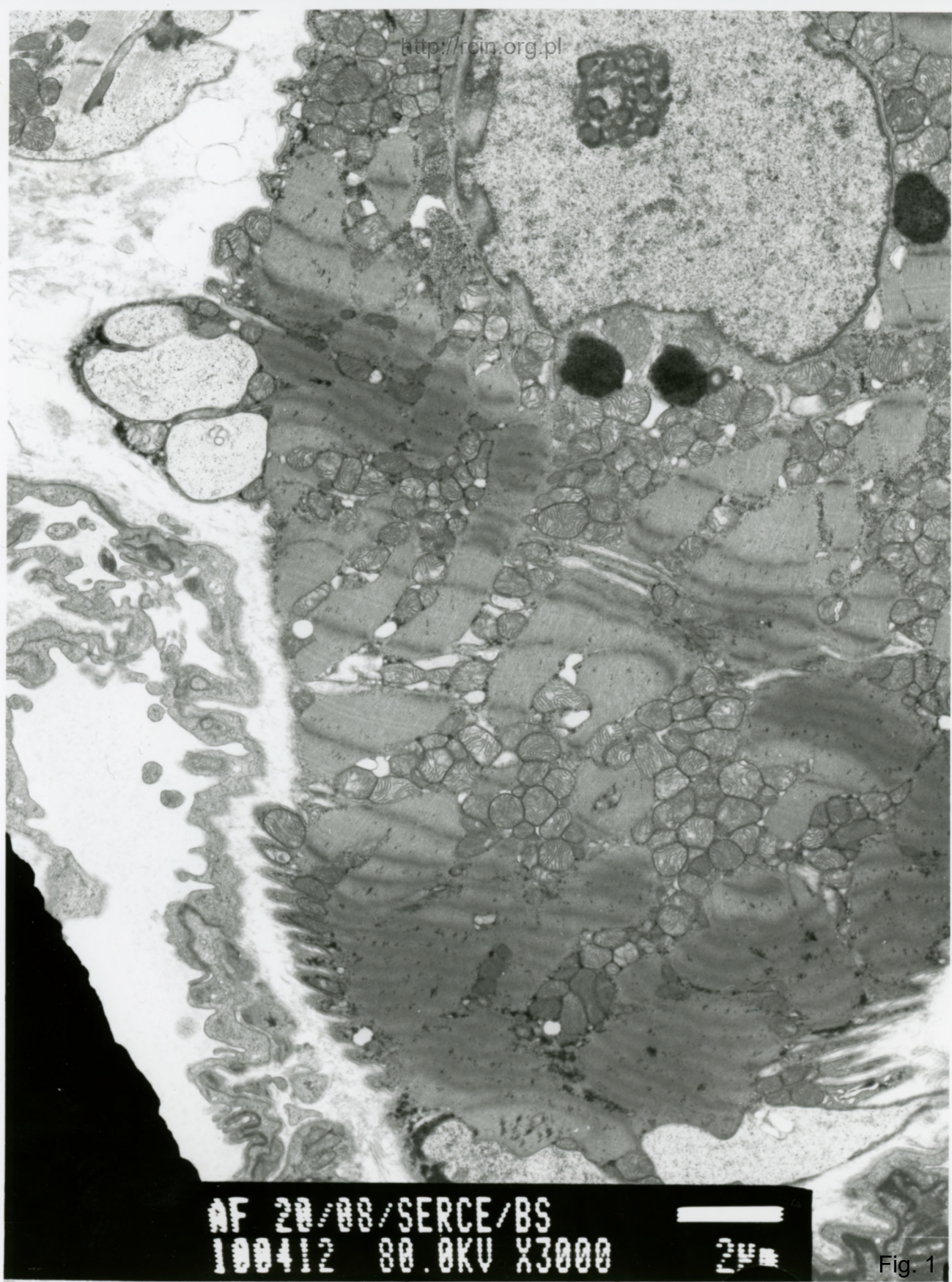
20/08

Zapalenie mięśnia sercowego

Analiza ultrastrukturalna wykazała zmiany w układzie sarkomerów (Fig. 1, 2). W cytoplazmie kardiomiocytów licznie występowały mitochondria. Siateczka śródplazmatyczna wykazywała cechy obrzęku (Fig. 3,4,5,6). Niektóre kardiomiocyty wykazywały cechy cytolizy (Fig. 7, 8). Obserwowano również wakuole autofagalne (Fig. 9). W niektórych kardiomiocytach jądra komórkowe charakteryzowały się nieregularnym kształtem (Fig. 10).

Myocarditis

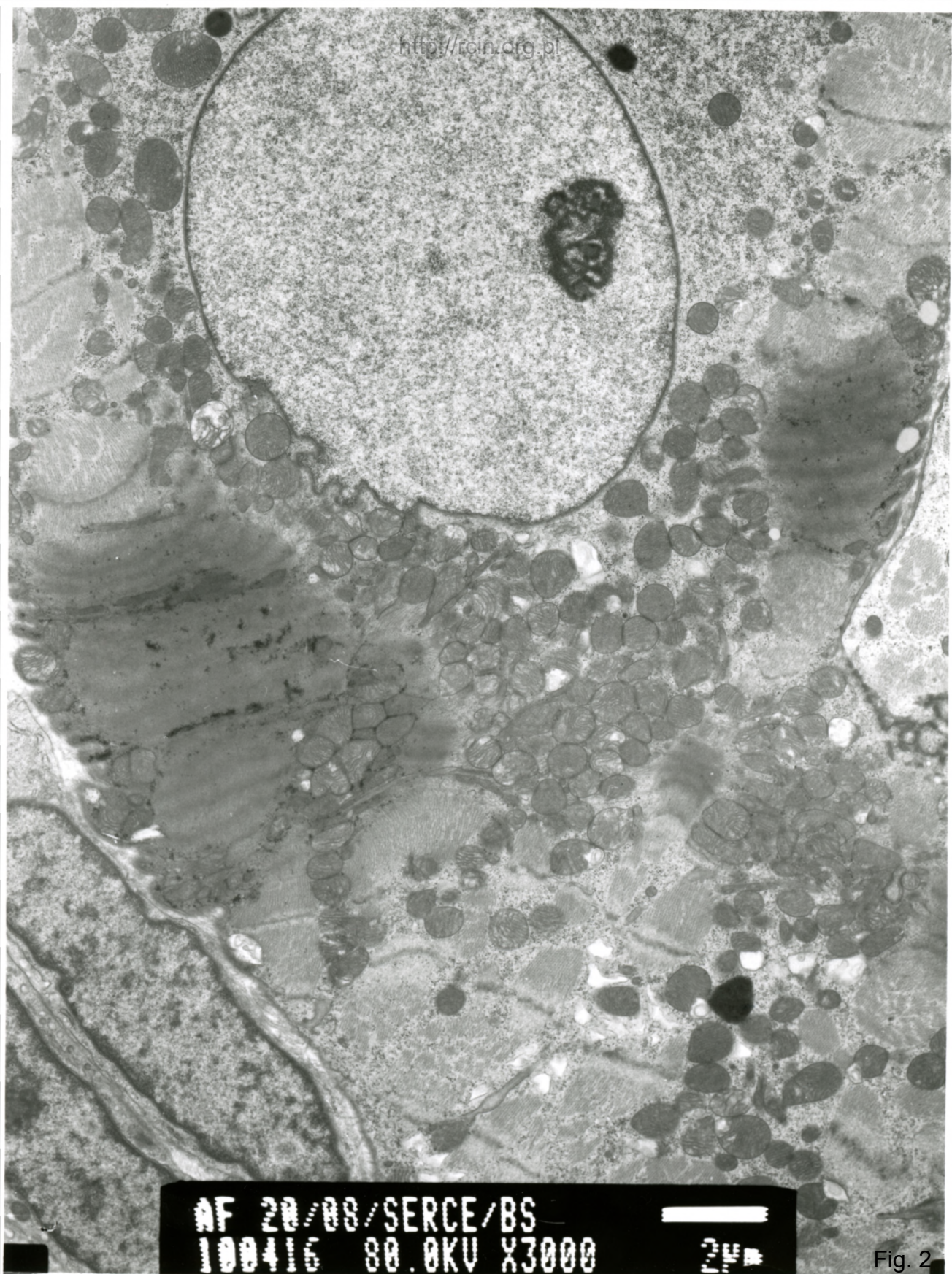
Ultrastructural analysis revealed changes in the sarcomere pattern (Figs. 1, 2). In the cytoplasm of cardiomyocytes abundant mitochondria were observed. The endoplasmic reticulum showed signs of edema (Figs 3, 4, 5, 6). Some cardiomyocytes showed features of cytolysis (Figures 7,8). Autophagous vacuoles were also observed (Fig. 9). In some cardiomyocytes, cell nuclei were characterized by an irregular shape (Fig. 10).



AF 20/08/SERCE/BS
100412 80.0KV X3000

2 μm

Fig. 1



AF 20/08/SERCE/BS
100416 80.0KV X3000

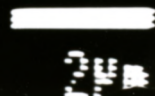
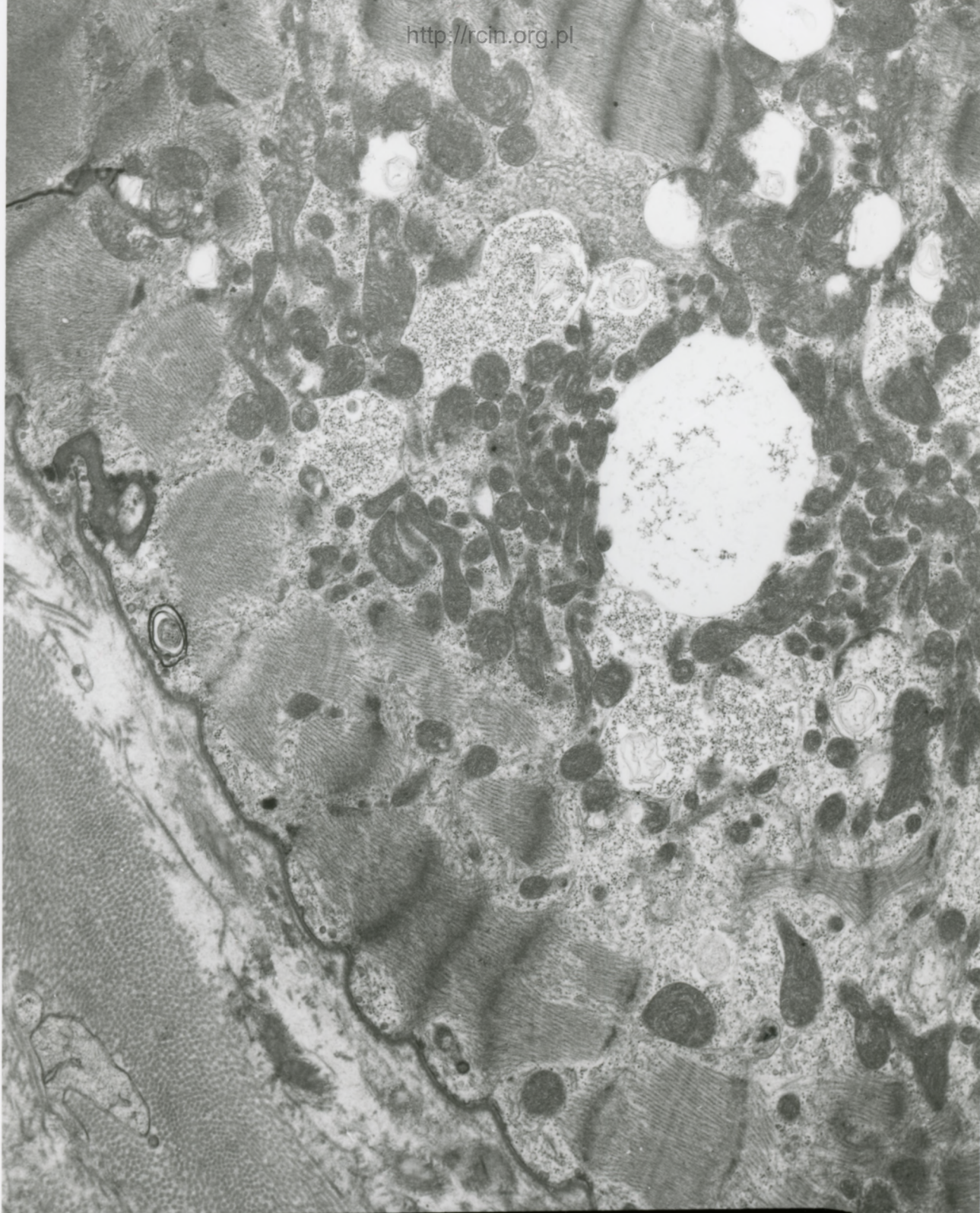


Fig. 2



MF 20/88/SERCE/BS
100415 80.0KV X5000

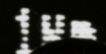
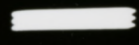
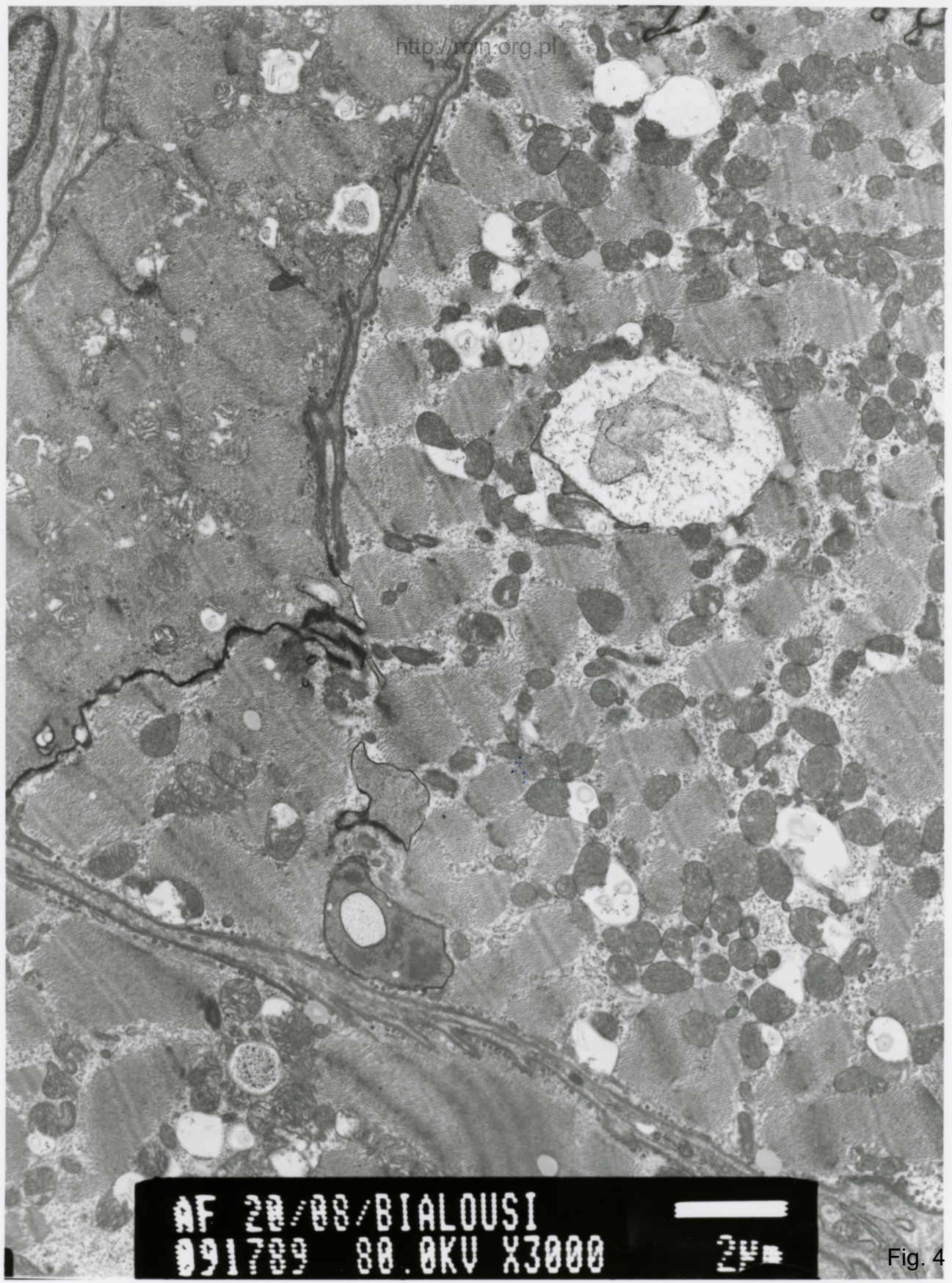
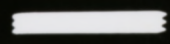


Fig. 3



AF 20/08/BIALOUSI
091709 80.0KV X3000



2µm

Fig. 4

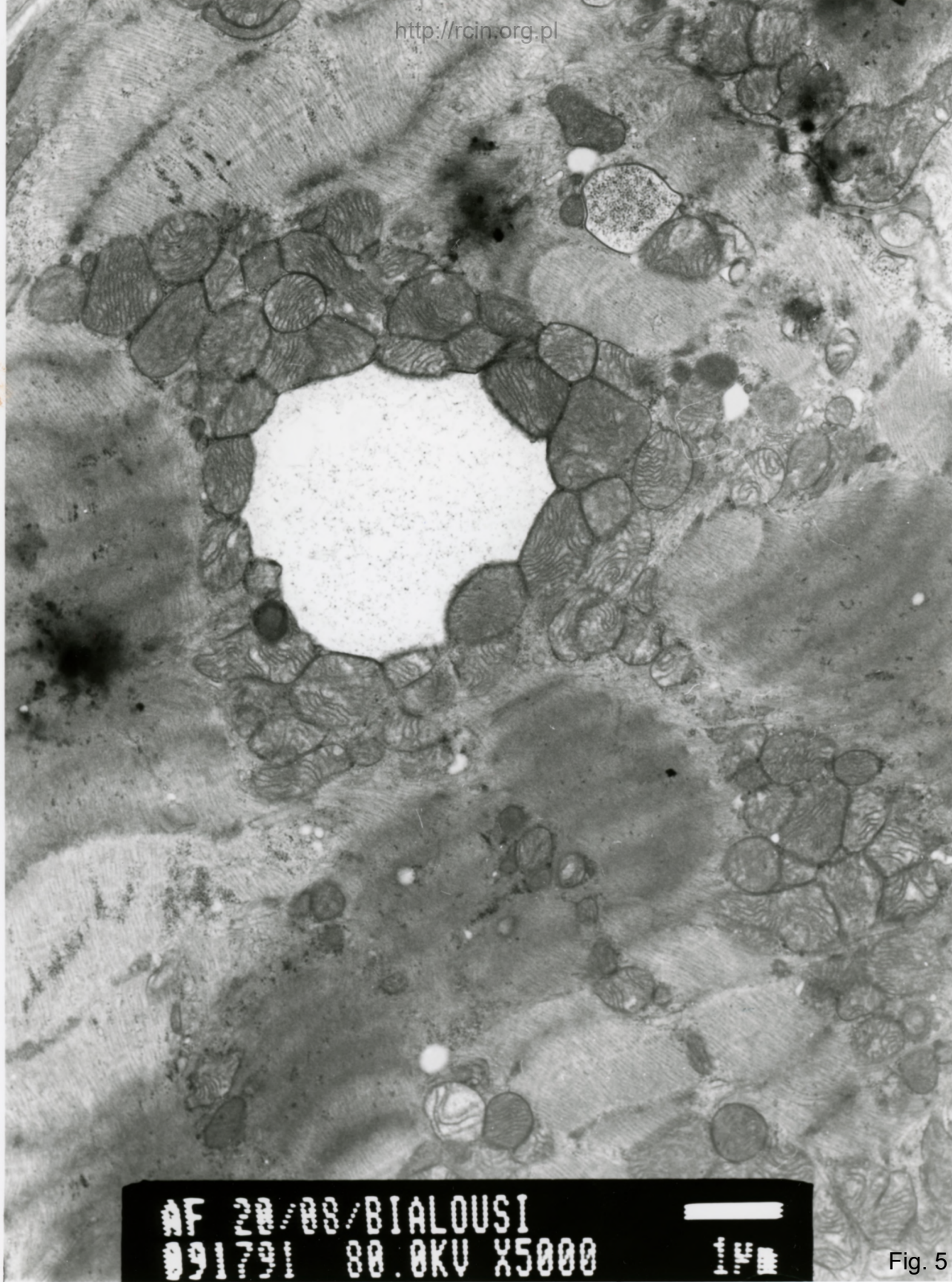
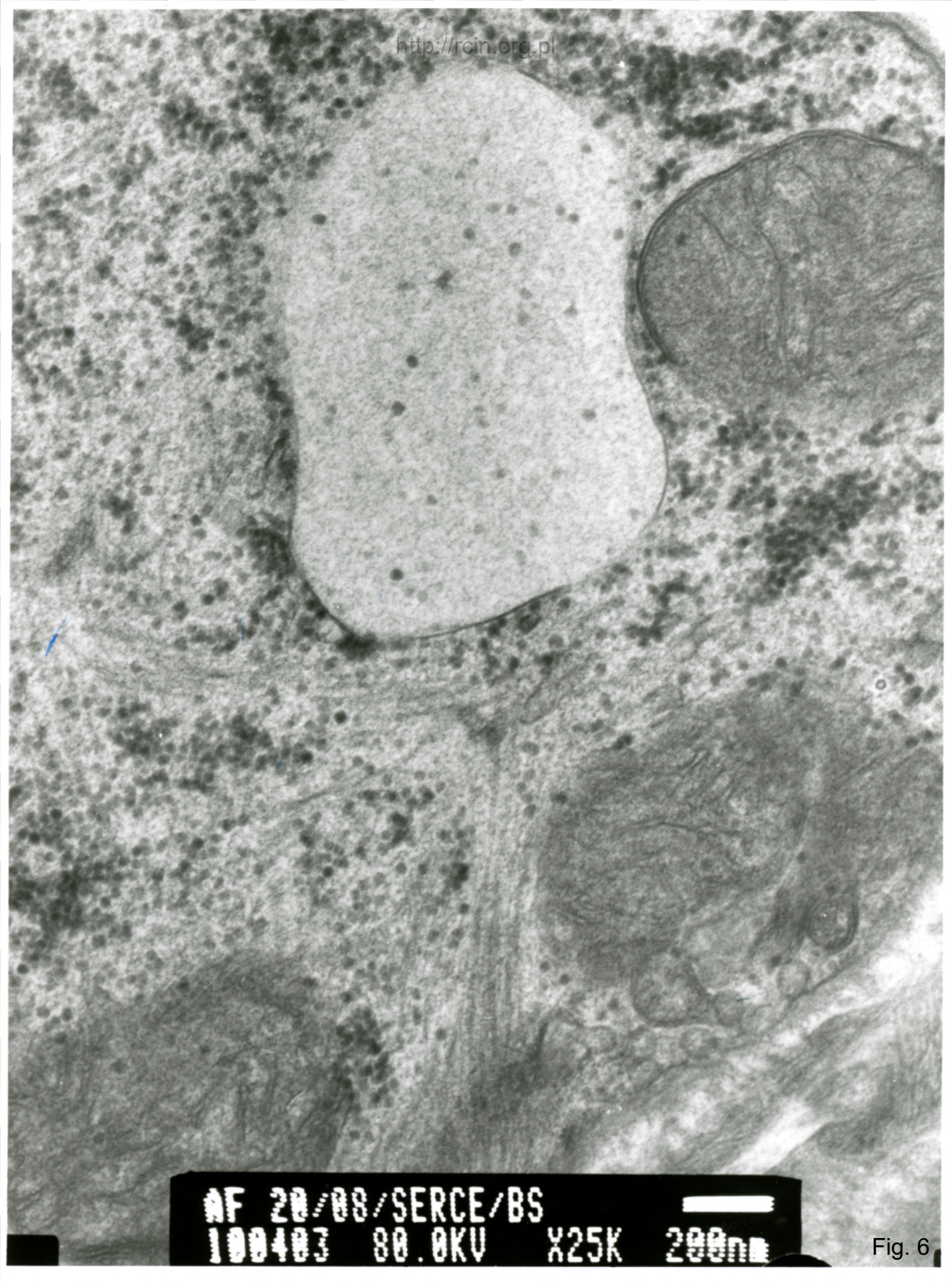


Fig. 5



AF 20/08/SERCE/BS
100403 80.0KV X25K 200nm

Fig. 6



AF 20/08/SERCE/BS
100413 80.0KV X2500

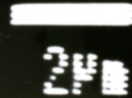
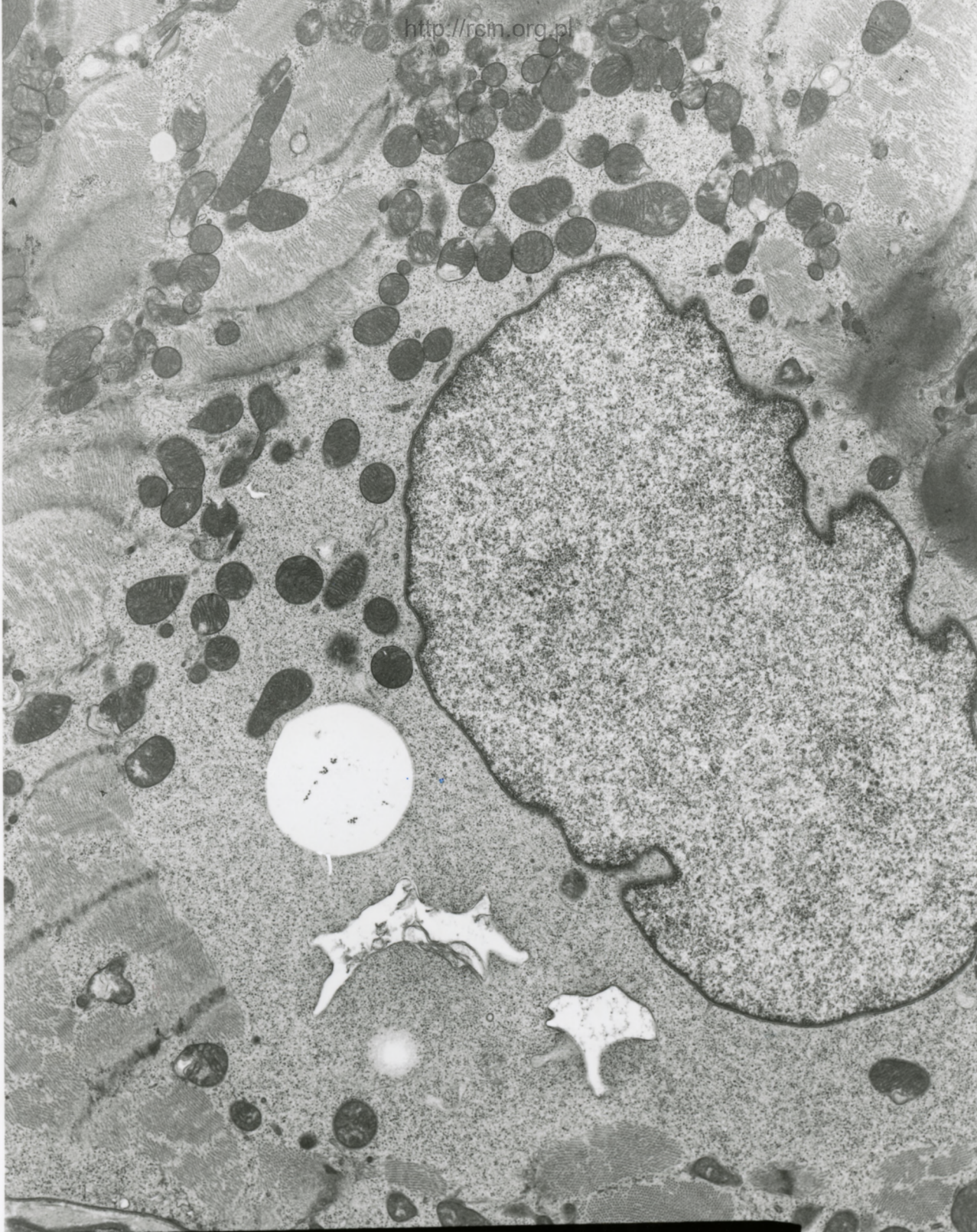
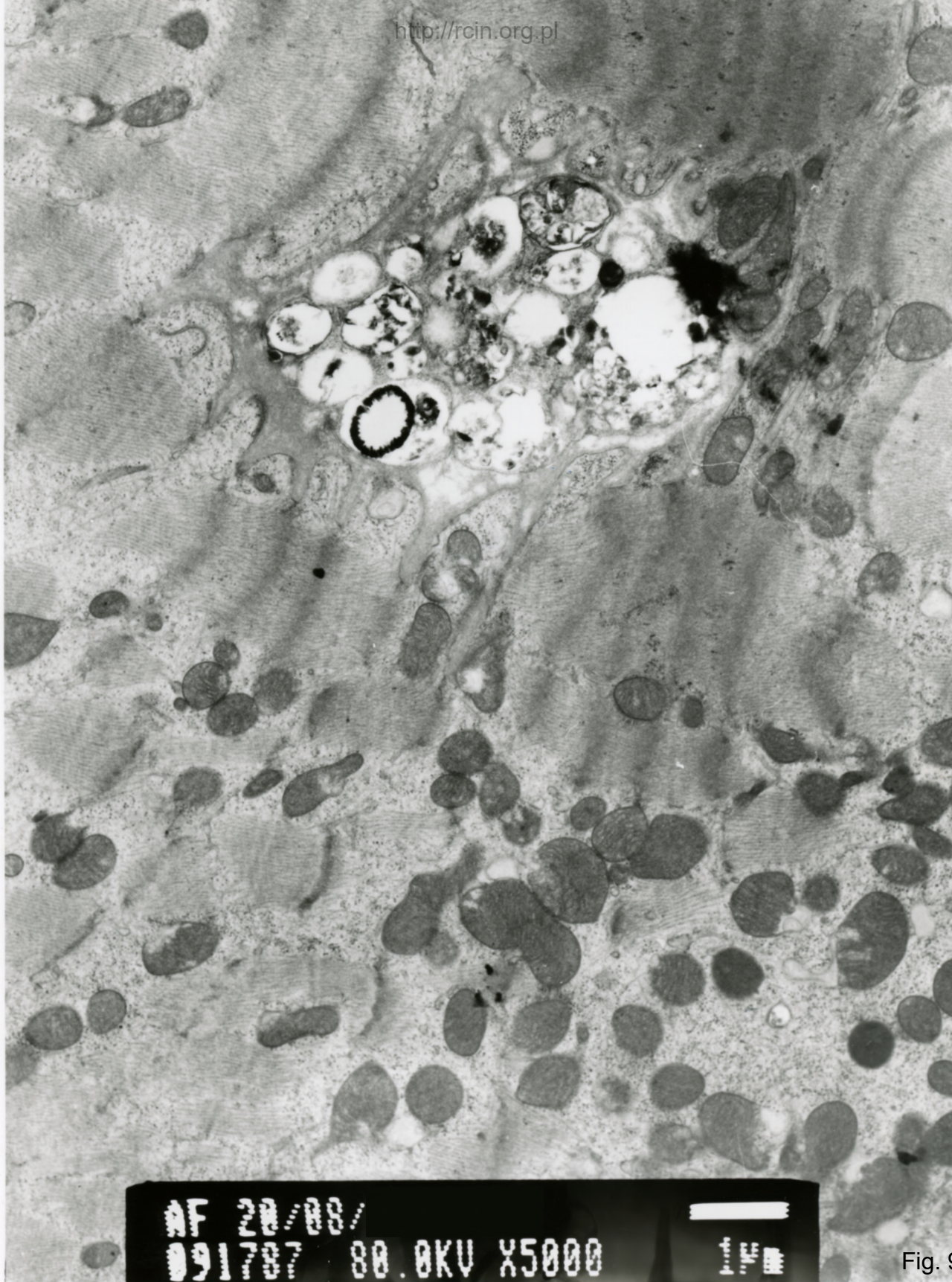


Fig. 7



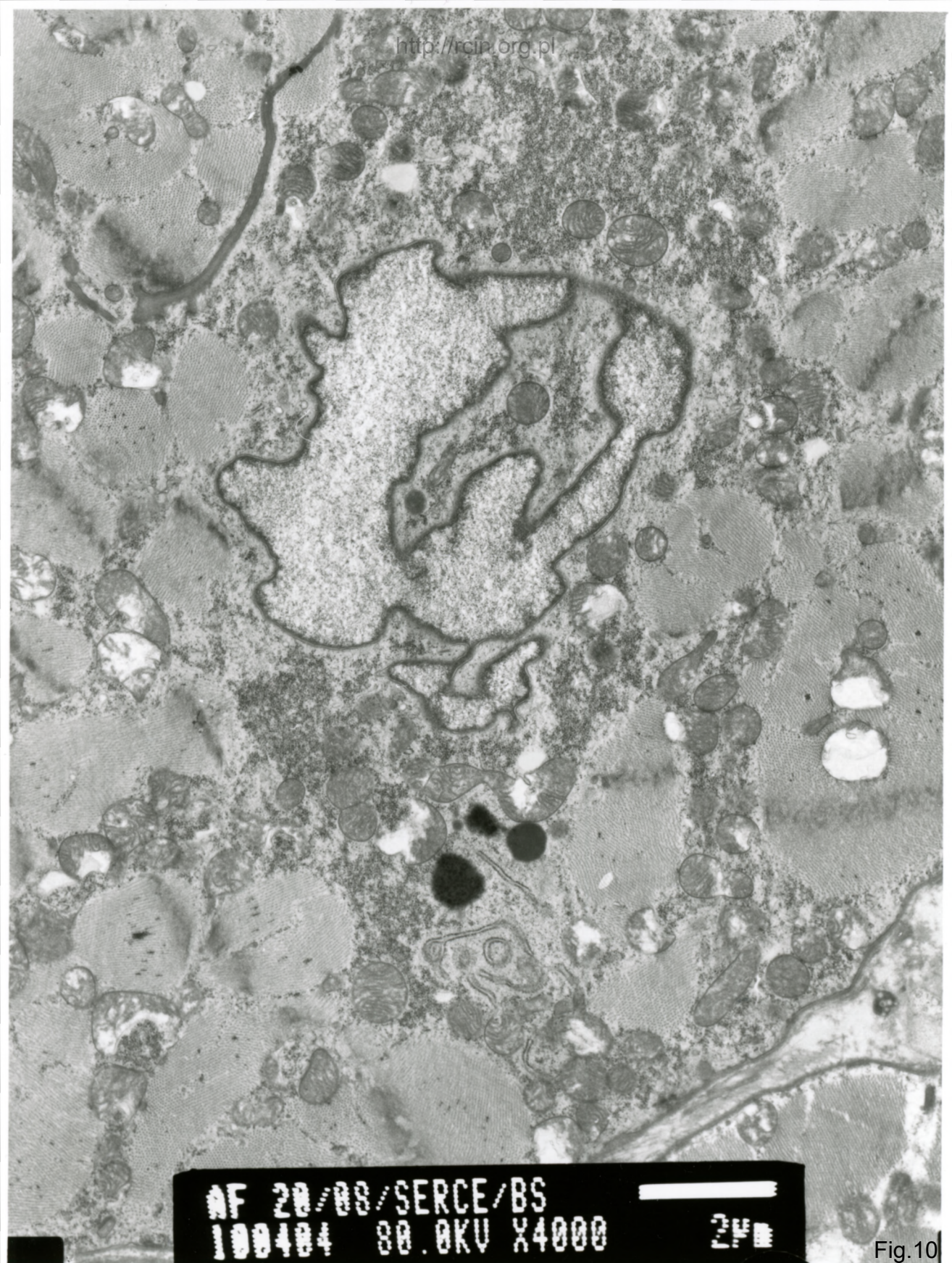
AF 20/08/
091700 80 AKU X3000 24

Fig. 8



AF 20/08/
091787 80.0KV X5000

Fig. 9



AF 20/88/SERCE/BS
100404 80.0KV X4000 2µm

Fig.10