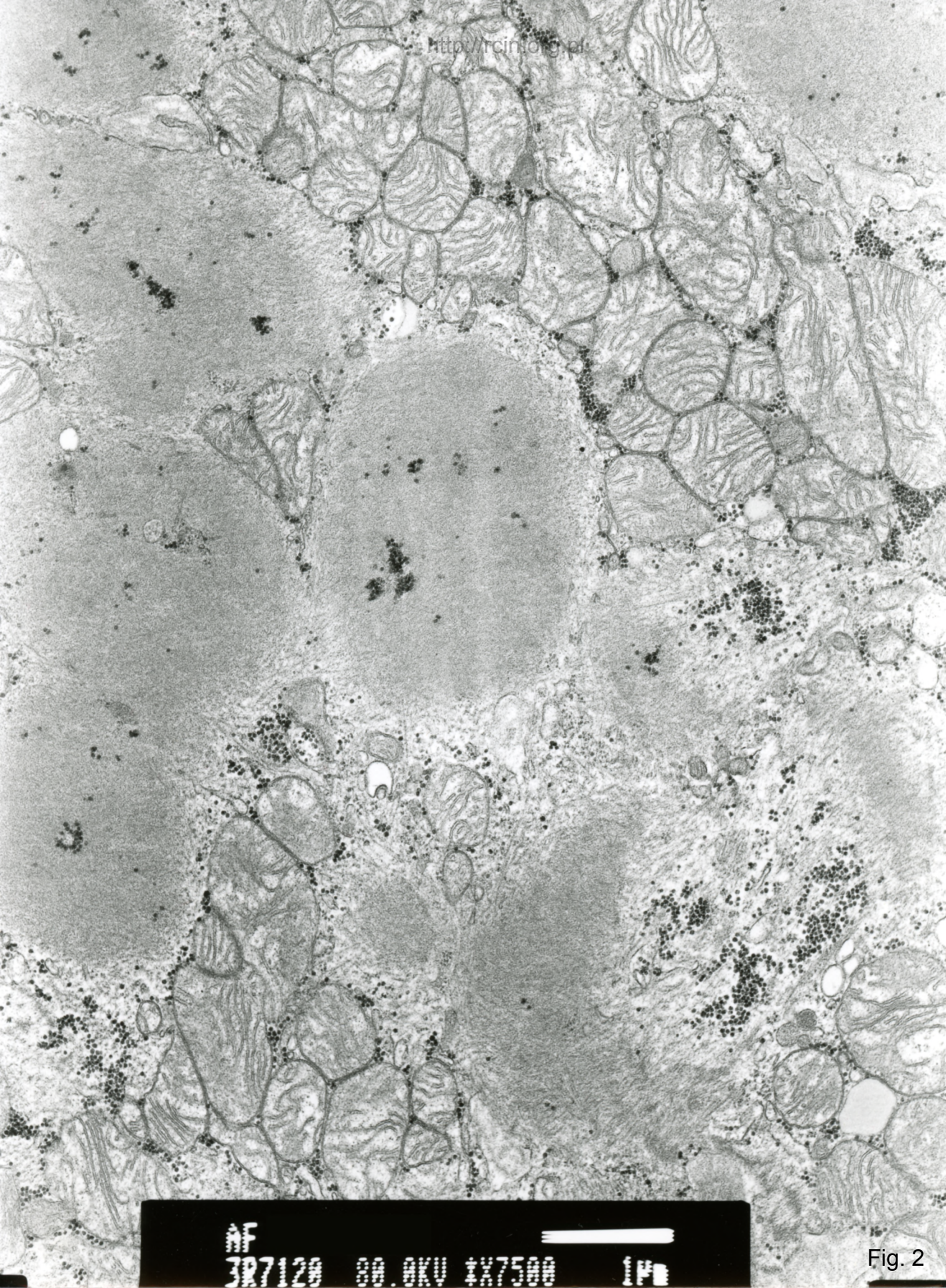


http://www.oxfordjournals.org/

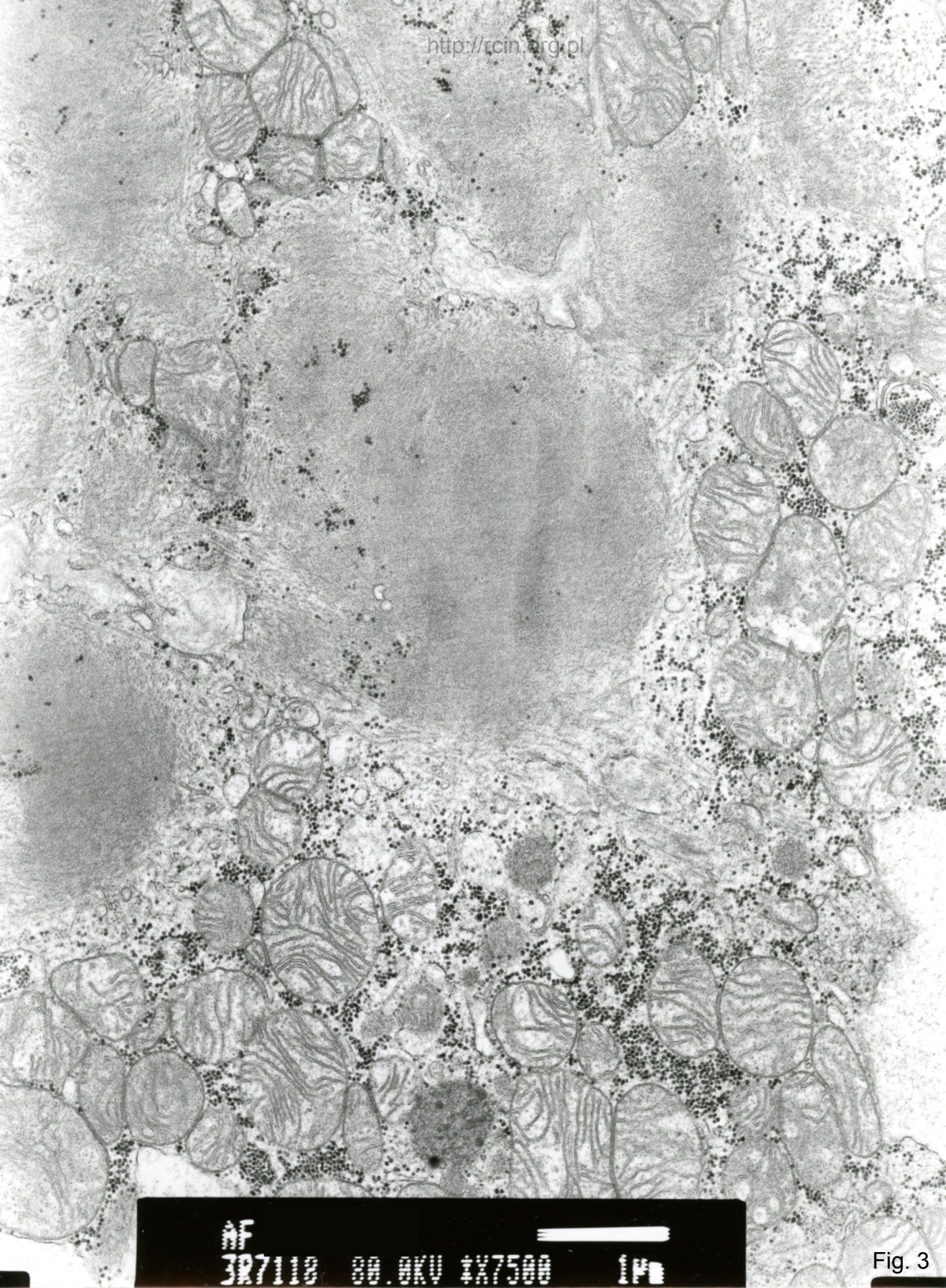
AF
3R7122 90.0KV X2500 2µm

Fig. 1



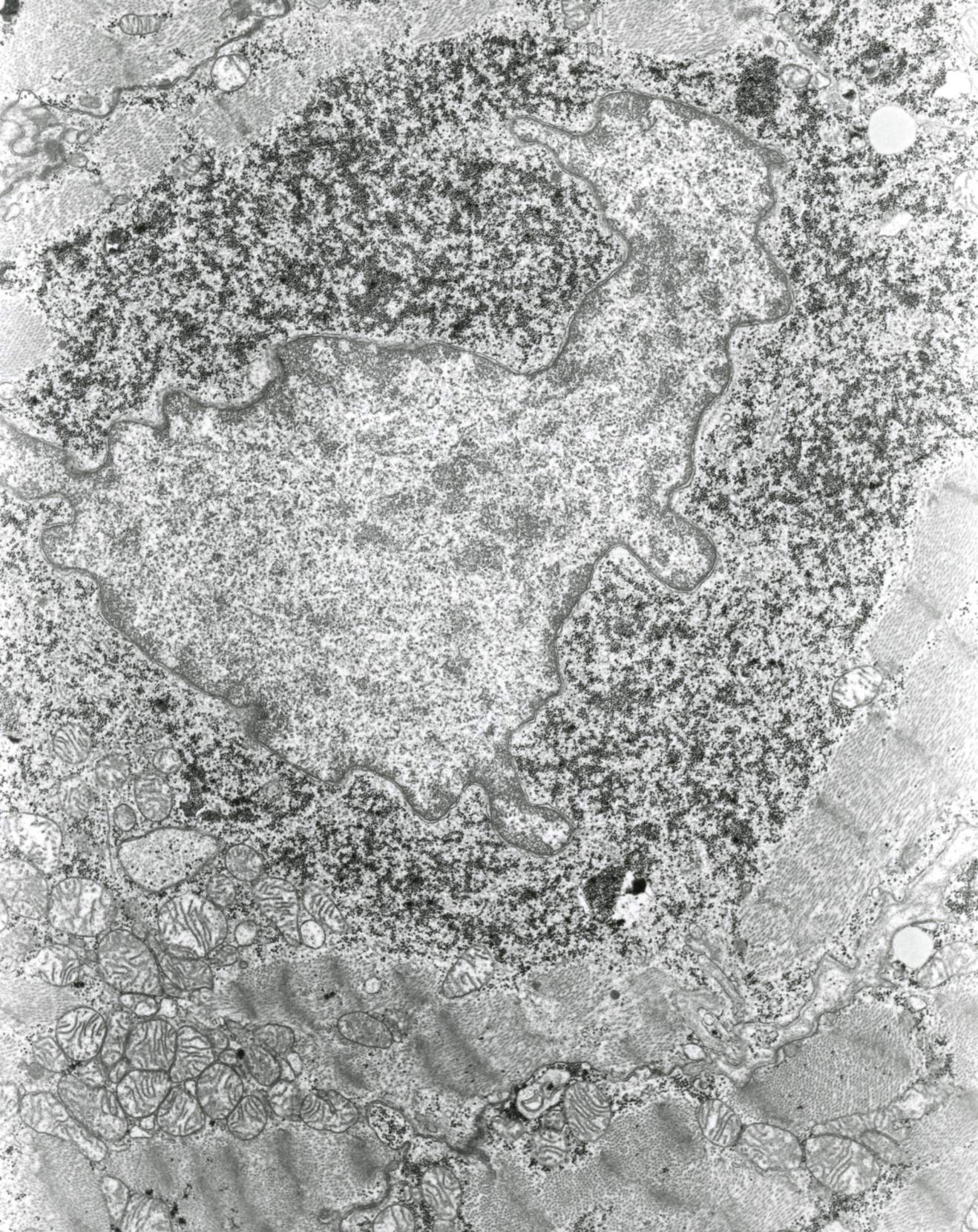
AF
3R7120 80.0KV 1X7500 1P

Fig. 2



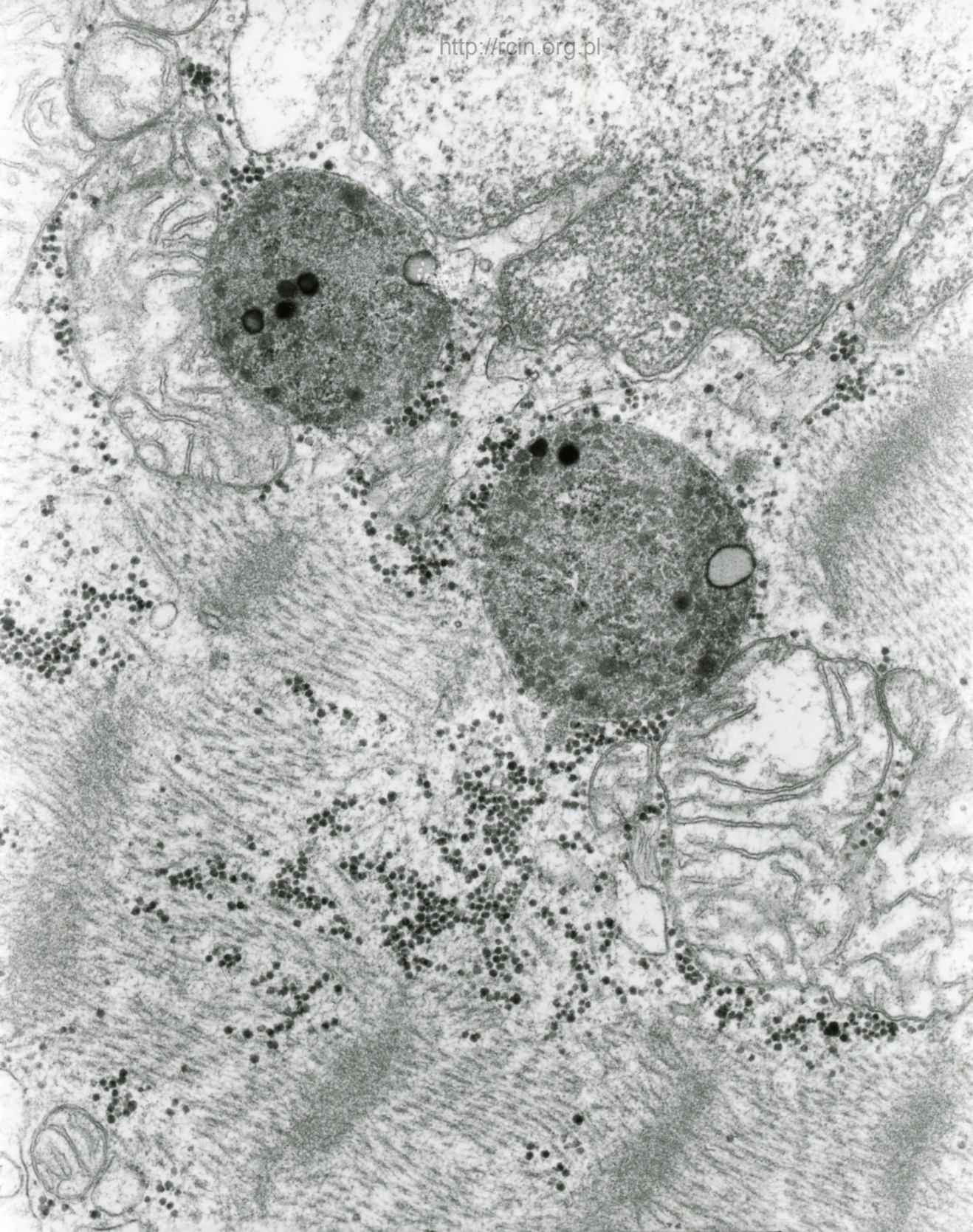
AF
3R7118 80.0KV X7500 1F

Fig. 3



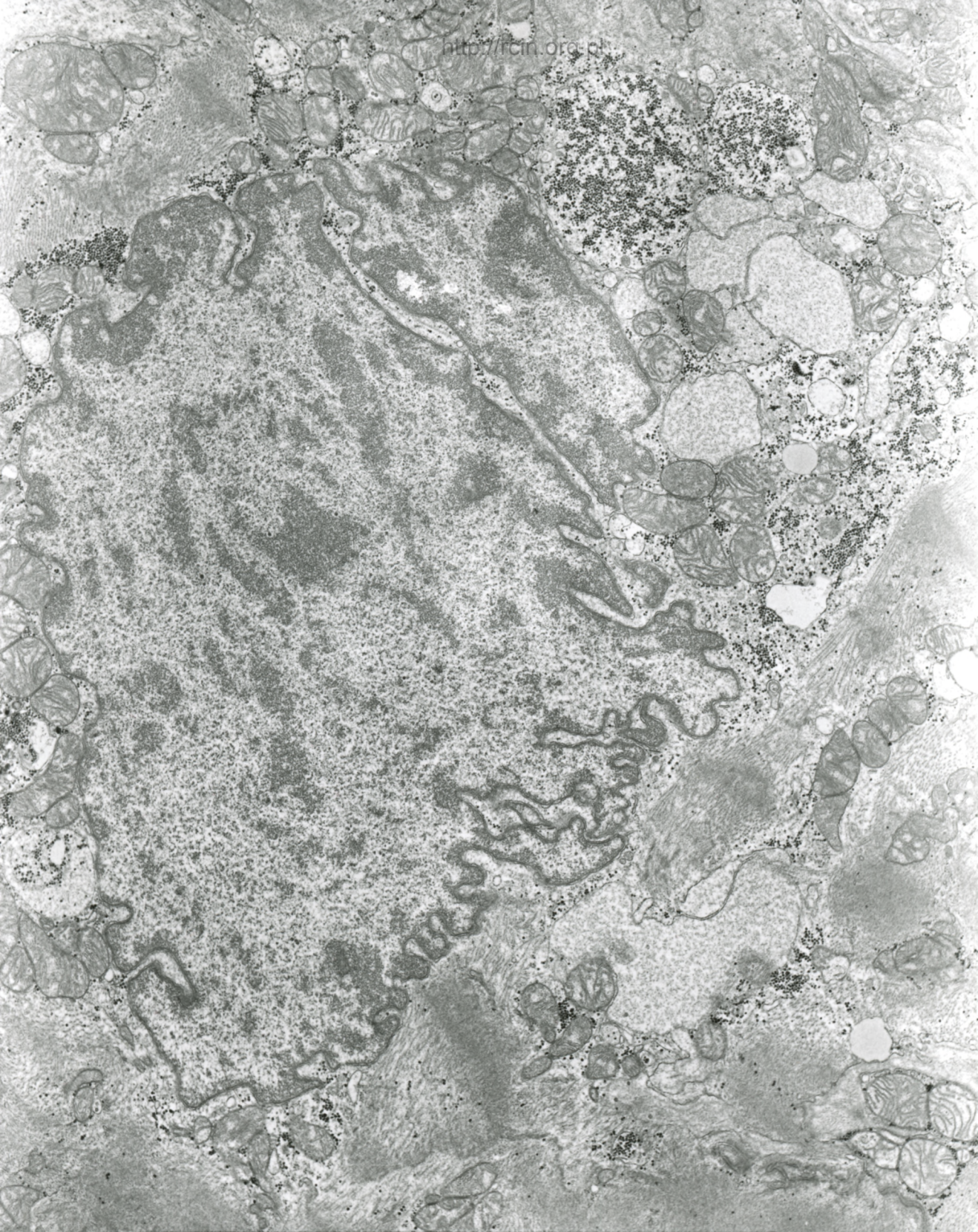
AF
3R7116 80.0KV 1X4000 2P

Fig. 4



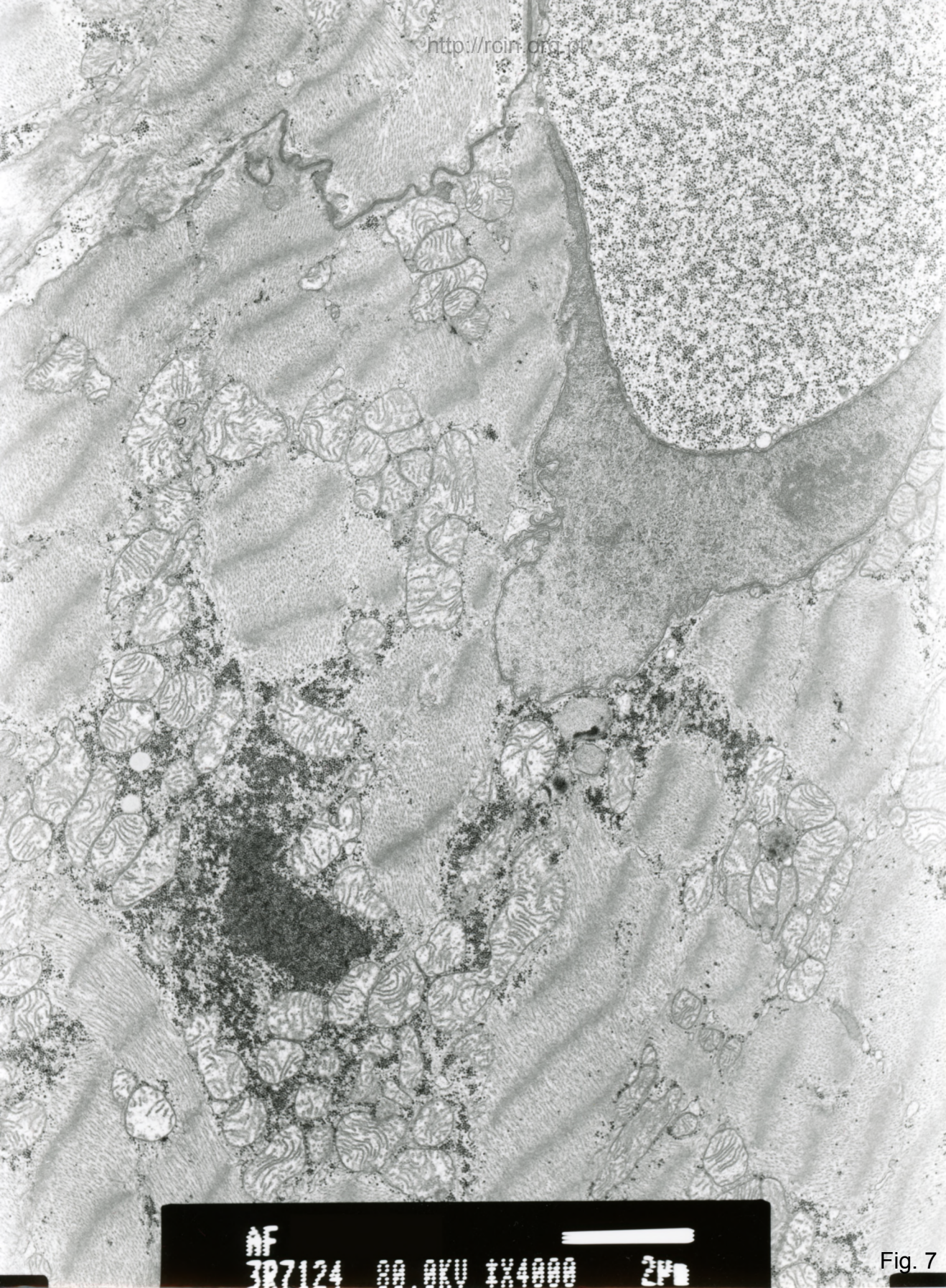
AF
3P7101 80.0KV X15K 500nm

Fig. 5



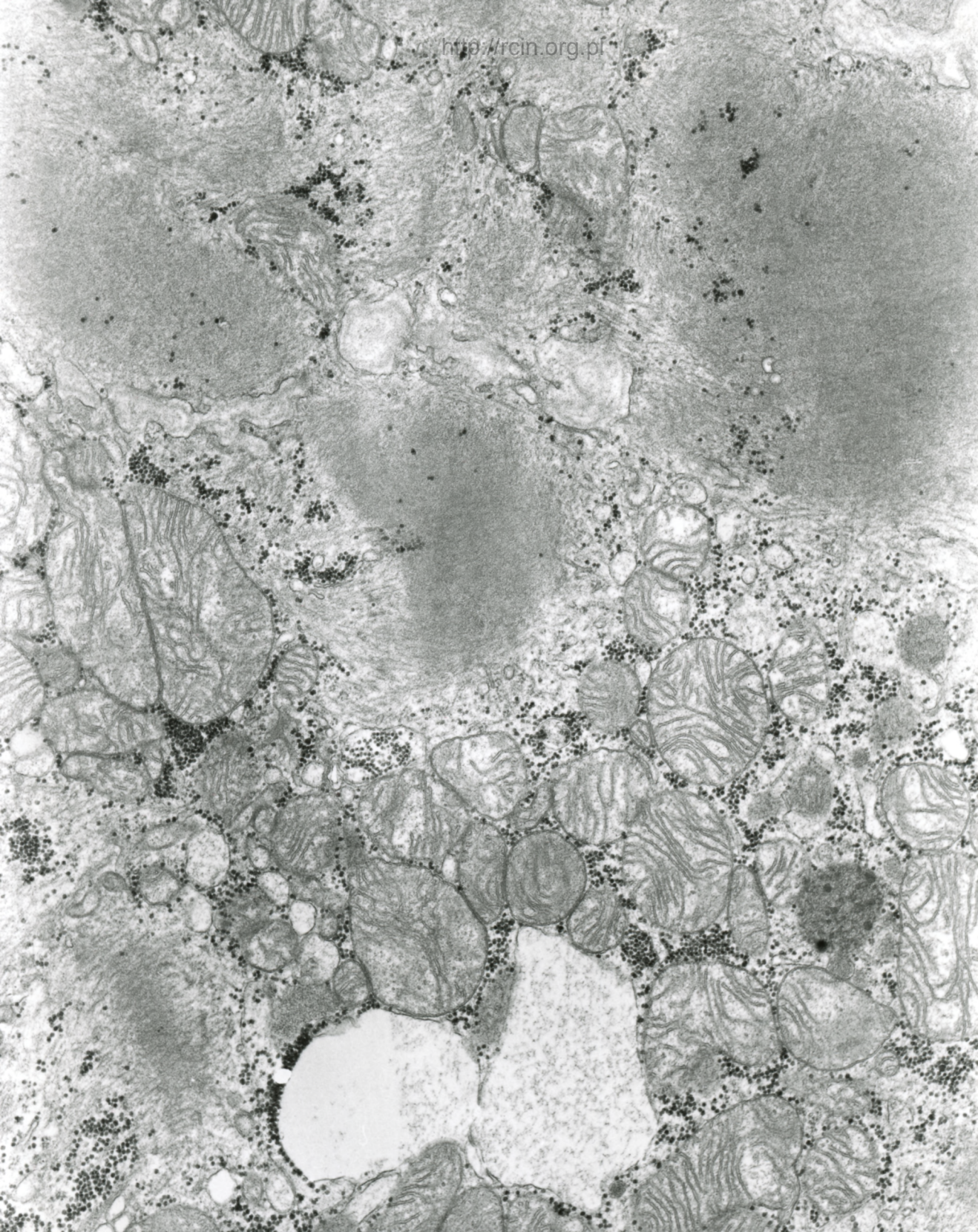
AF
3R7196 80.0KV 1X4000 2Pm

Fig. 6



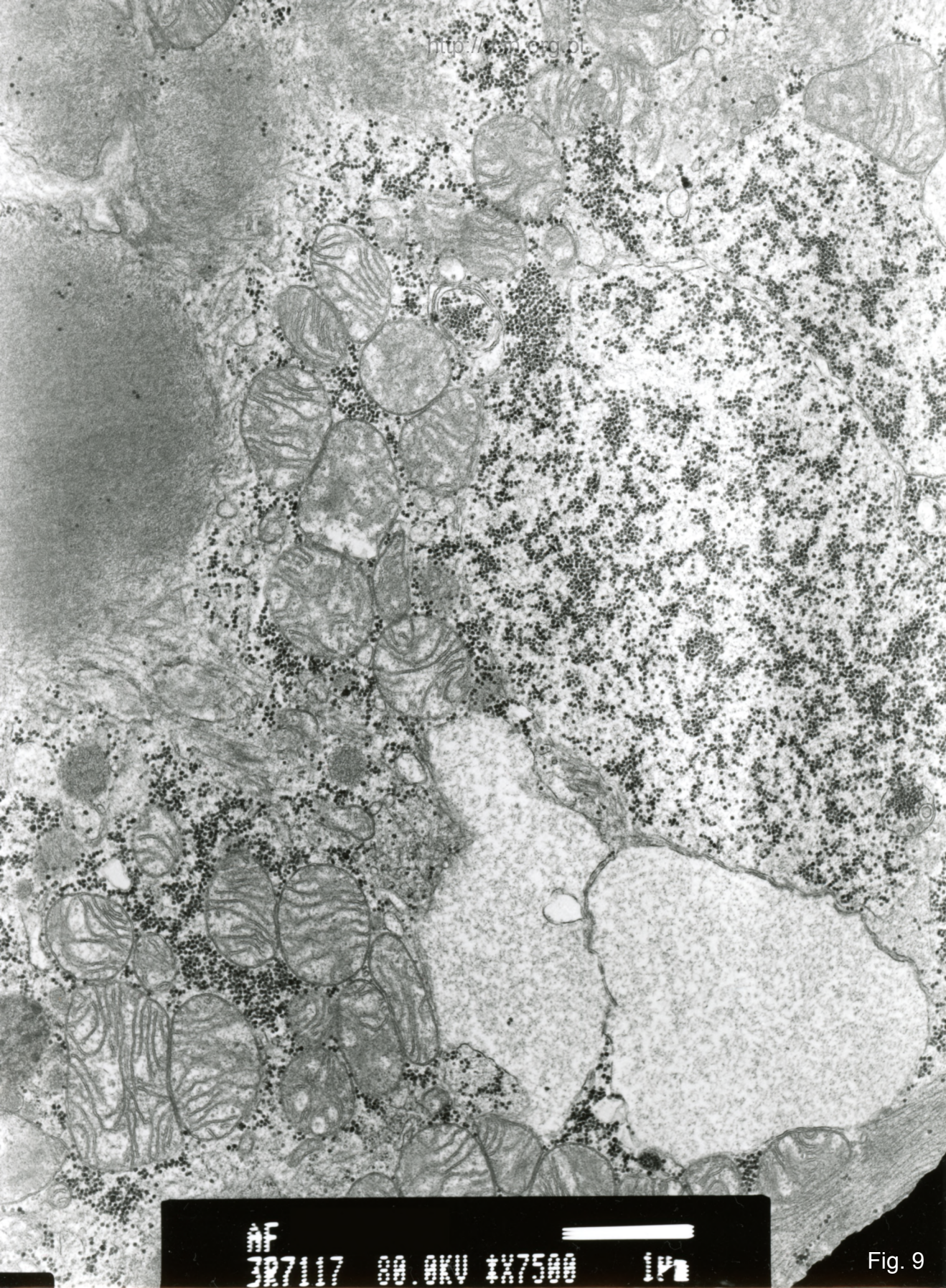
AF
3R7124 00 0KV 1X4000 2F

Fig. 7



AF
3R7119 80.0KV X7500 1F

Fig. 8



NF
327117 80.0KV X7500 1P

Fig. 9

2003 (br. nr)

Kardiomiopatia rozstrzeniowa

Analiza ultrastrukturalna ujawniła zatartą strukturę sarkomerów (Fig.1-3). W pobliżu jąder o różnych kształtach, zarówno prawidłowych jak i o pofałdowanej otoczce jądrowej obserwowano nagromadzenie glikogenu (Fig. 4,5), w niektórych przypadkach obłonionego (Fig 6,7). Obecne były także struktury wakuolarne (Fig. 8,9).

Dilated cardiomyopathy

Electron microscopy analysis revealed blurred sarcomere pattern (Fig.1-3). An accumulation of glycogen granules (Fig. 4,5), in some cases surrounded by membrane (Fig. 6,7), was observed near the nuclei of various shapes, both normal and with corrugated nuclear envelope. Vacuolar structures were also present (Figs 8,9).