

AF 55/09/SERCE/CS  
091744 80.0KV X2500

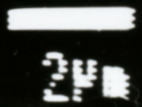
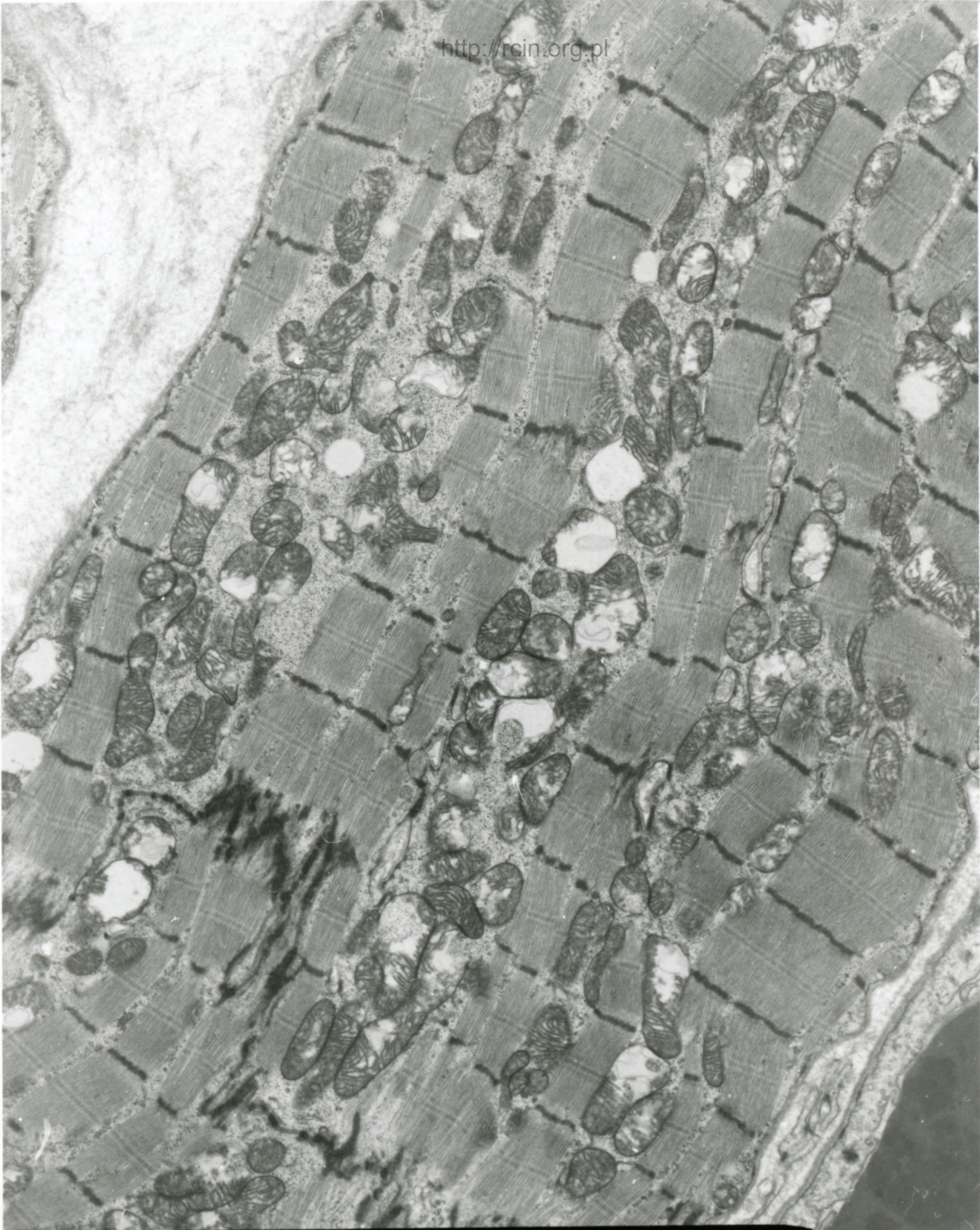
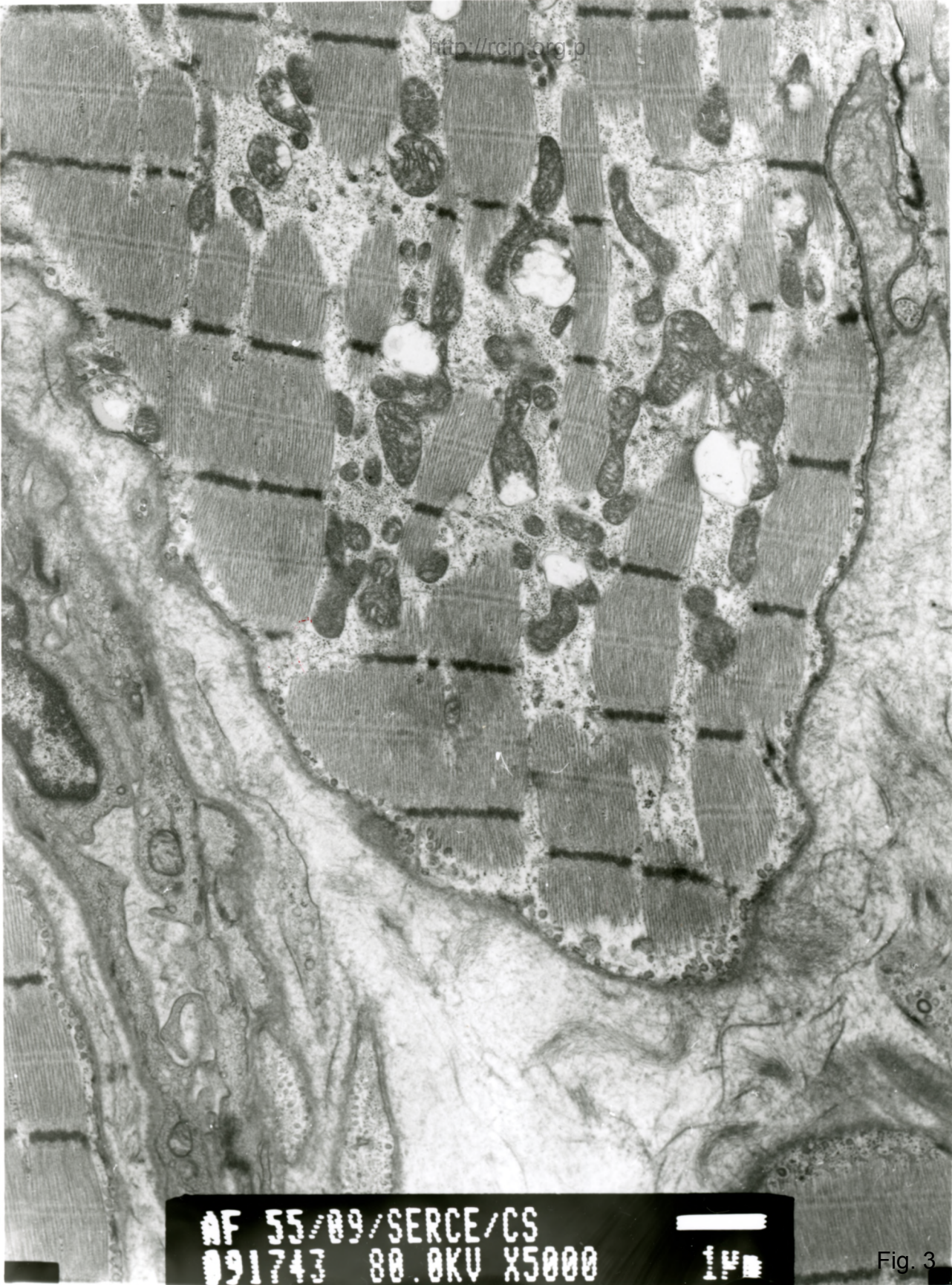


Fig. 1



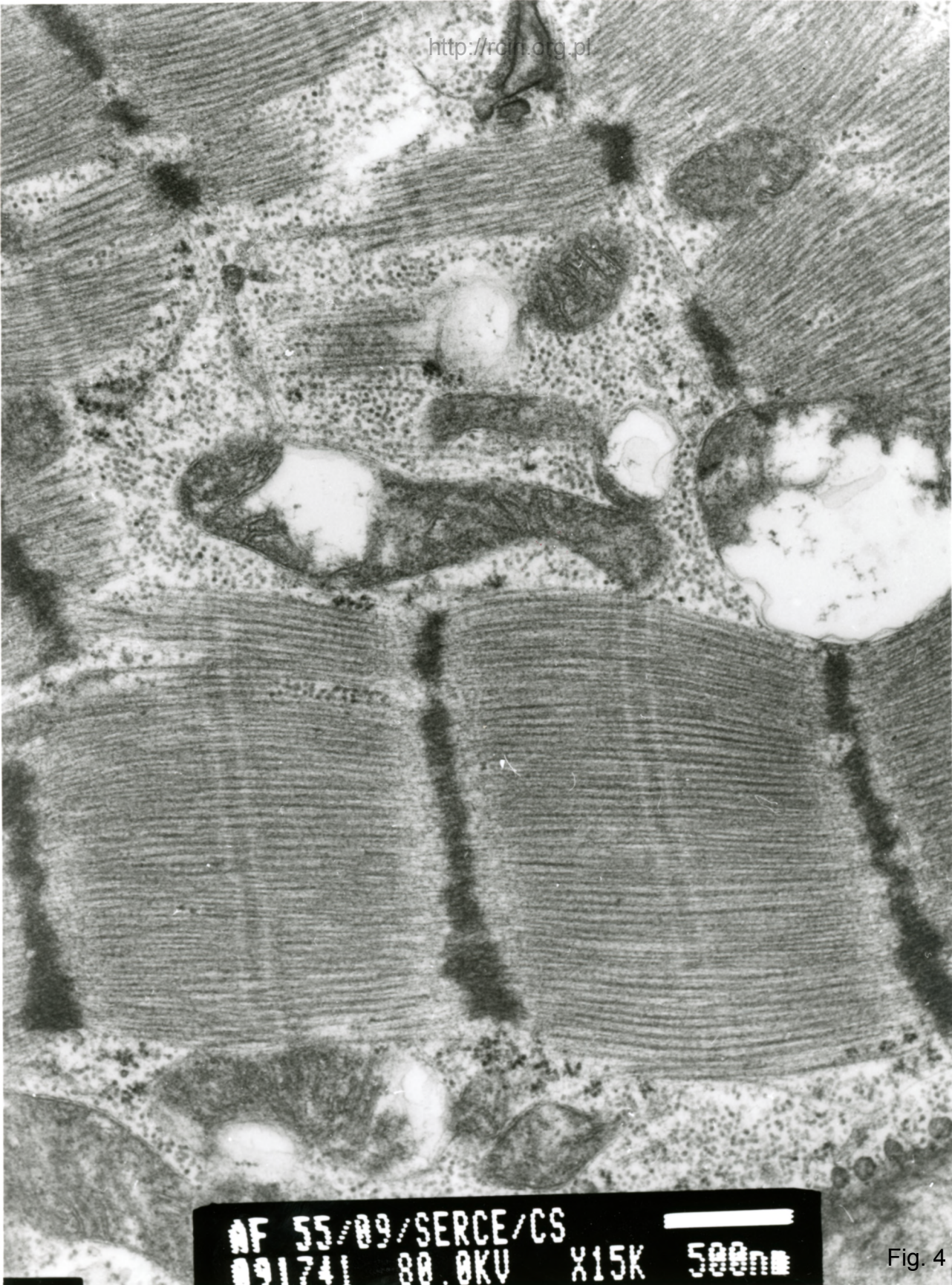
AF 55/89/SERCE/CS  
091745 80.0KV X4000 24

Fig. 2



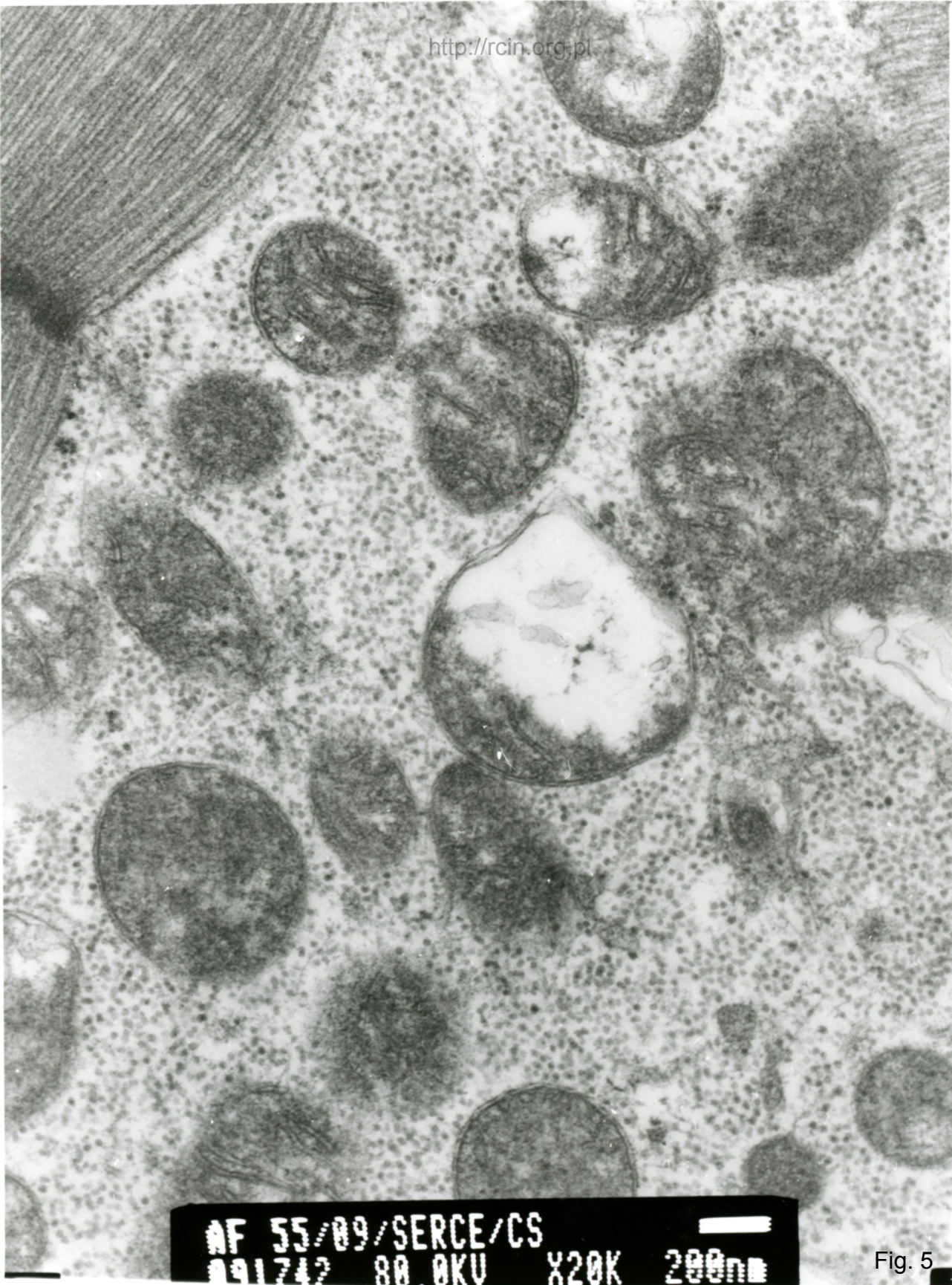
AF 55/09/SERCE/CS  
091743 80.0KV X5000 1µm

Fig. 3



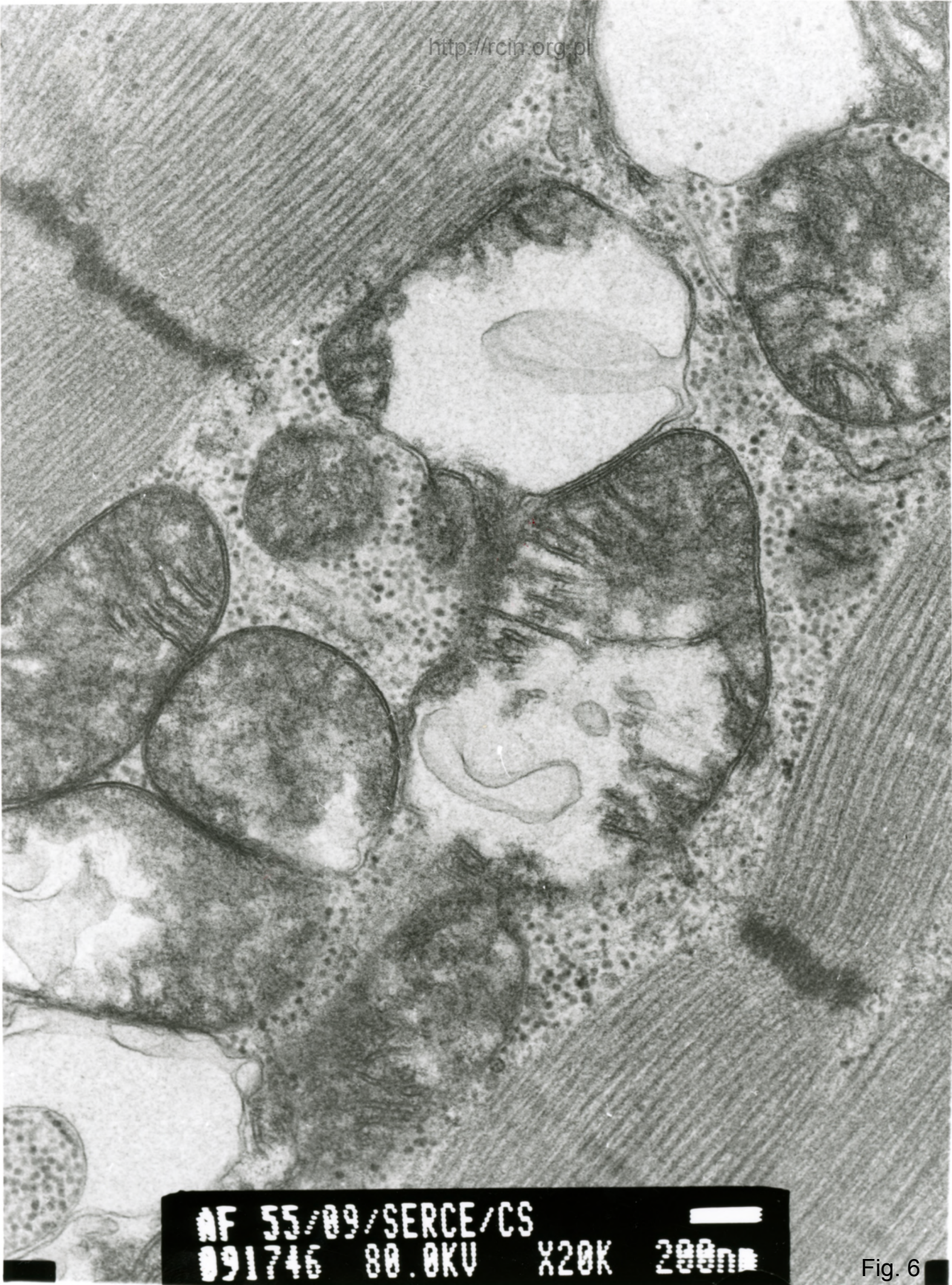
AF 55/89/SERCE/CS  
091741 80.0KV X15K 500nm

Fig. 4



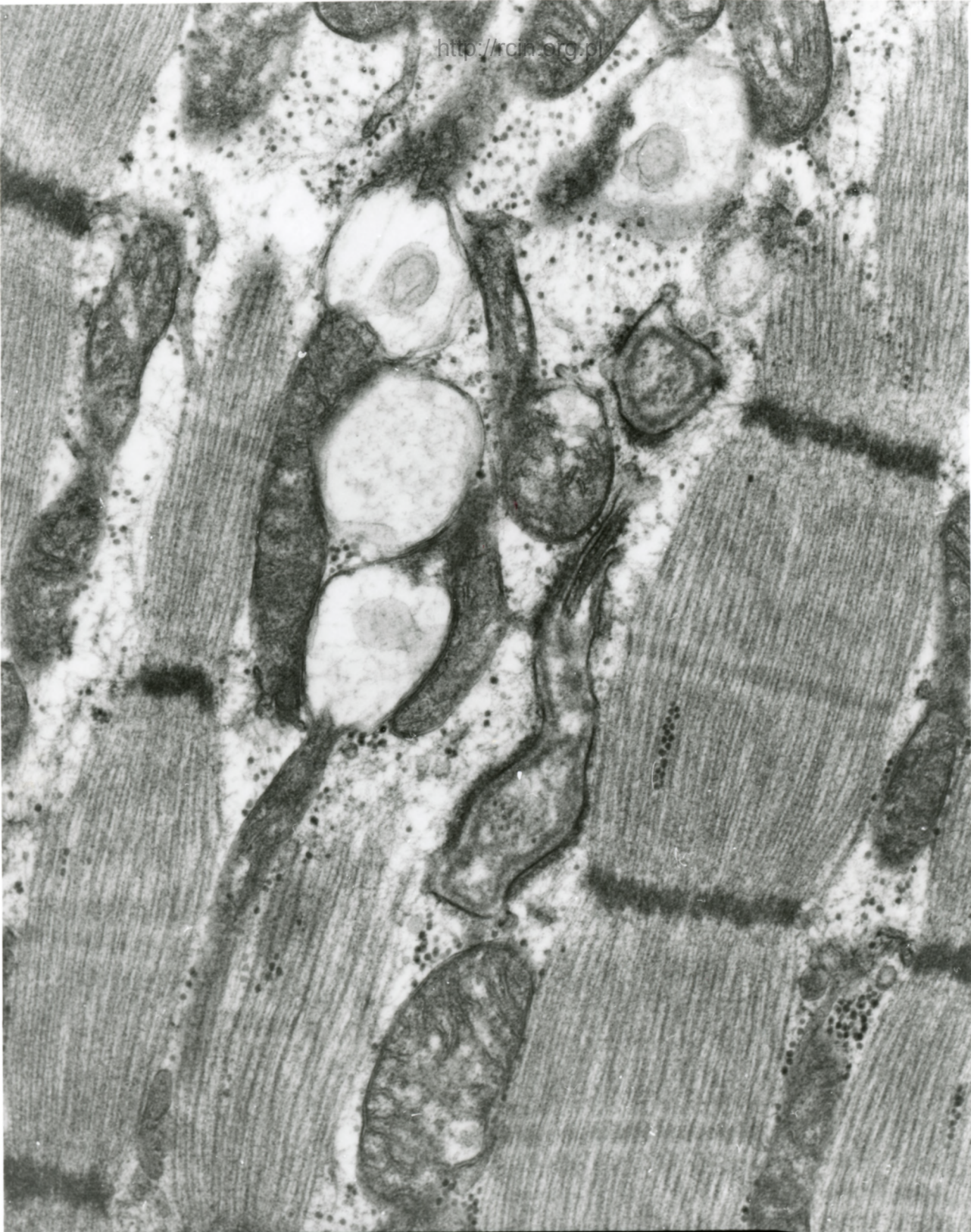
AF 55/09/SERCE/CS  
091742 80.0KV X20K 200nm

Fig. 5



AF 55/09/SERCE/CS  
091746 80.0KV X20K 200nm

Fig. 6



NF 55/89/SERCE/CS  
001710 88 AKU Y15K 500nm

Fig. 7

55/09 - biopsja lewej komory (patrz też 26/09 – biopsja uszka i 27/09 – biopsja komory)

1. 14

### Zapalenie mięśnia sercowego

Analiza ultrastrukturalna wykazała dezorganizację sarkomerów i cechy miocytolizy (Fig. 1). Między miofibrillami licznie występowały mitochondria o jasnej elektronowo macierzy, częściowo pozbawione grzebieni (Fig. 2-7).

### Myocarditis

Ultrastructural analysis revealed sarcomeric disorganization and features of myocytolysis (Fig. 1). Electron-bright matrix mitochondria, partially devoid of combs, were abundant between myofibrils (Figs. 2-7).