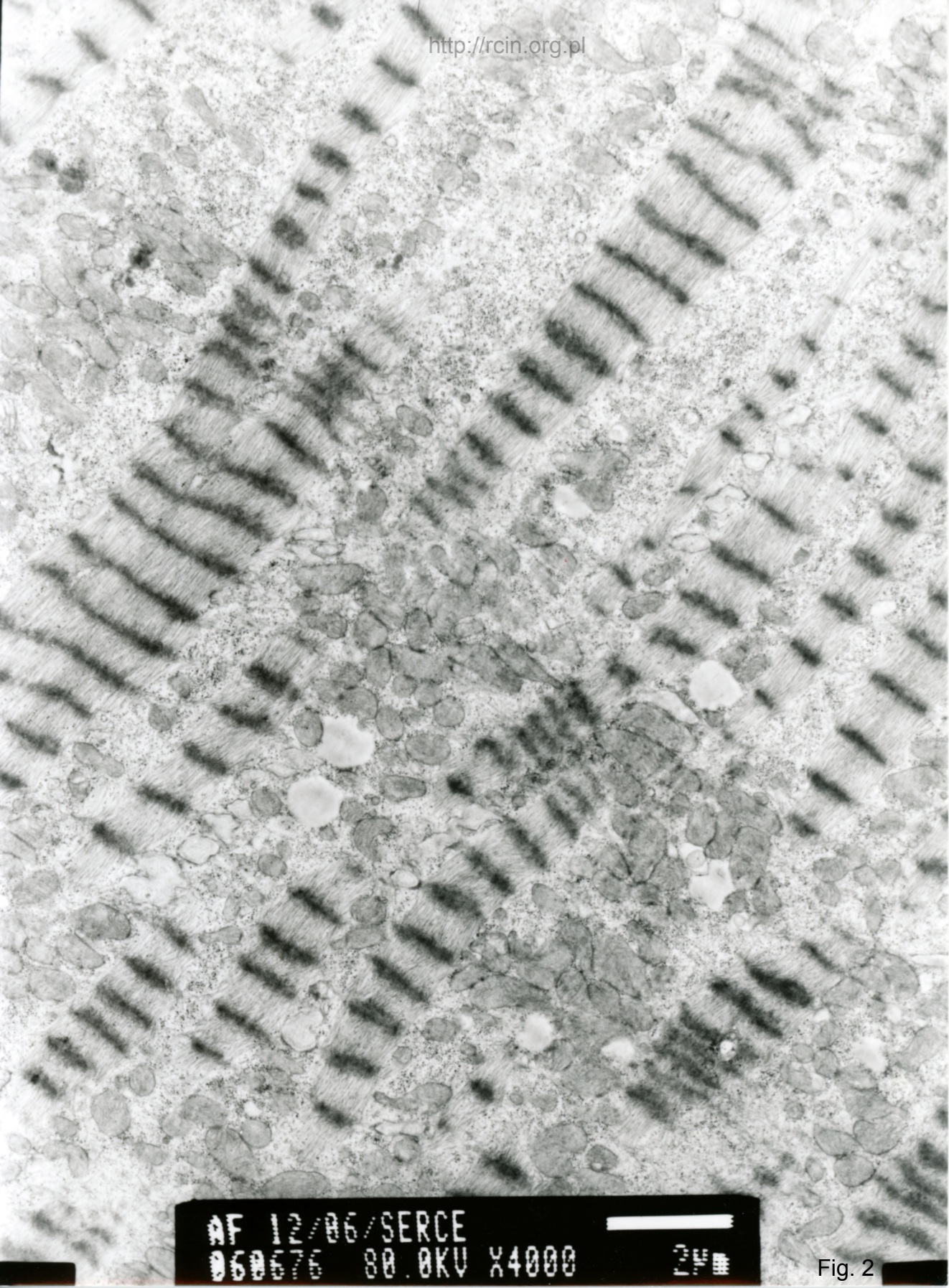


AF 12/06/SERCE
060575 80.0KV X4000 20µm

Fig. 1



AF 12/06/SERCE
060676 80.0KV X4000

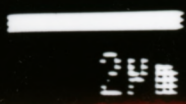
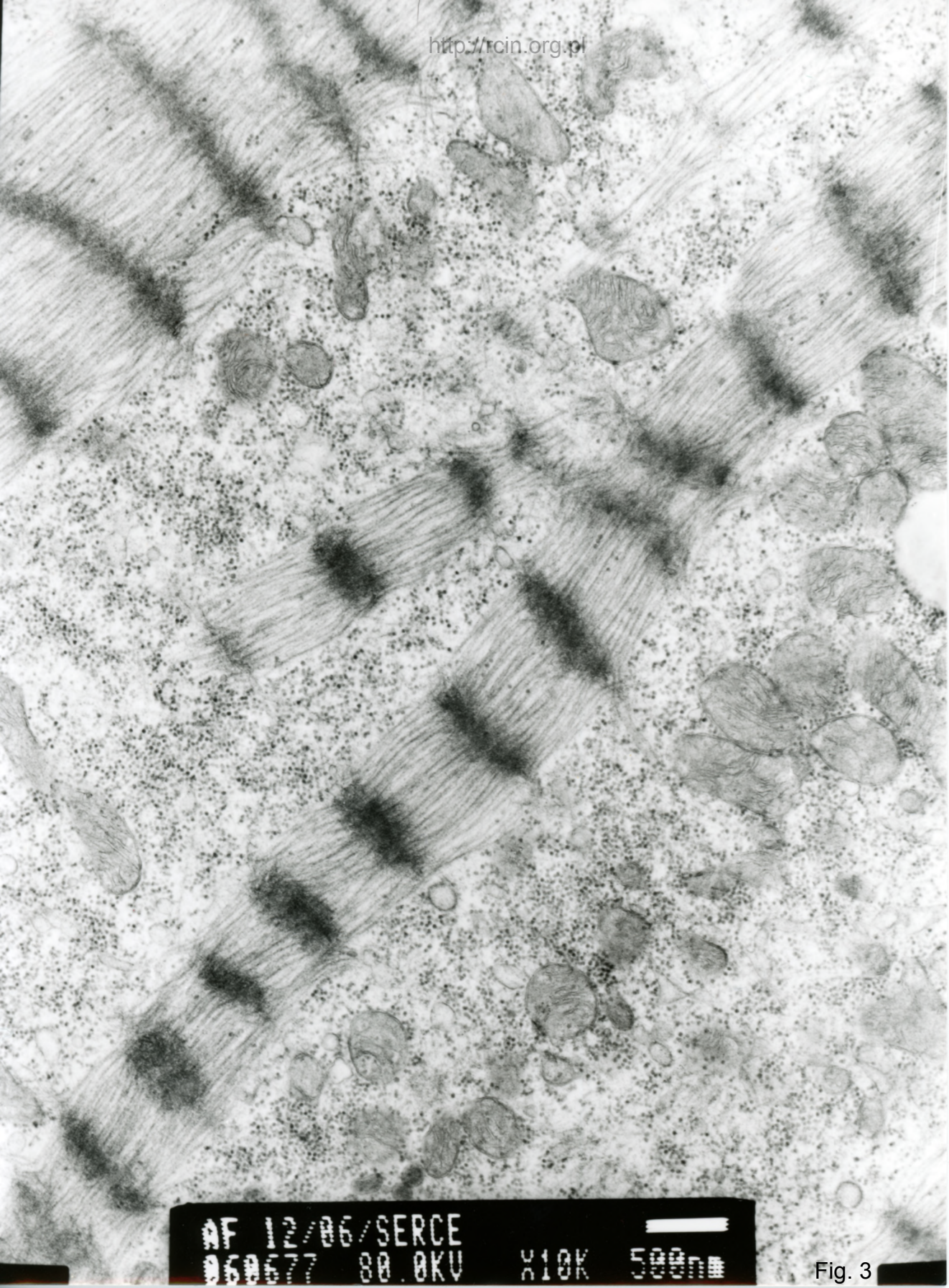
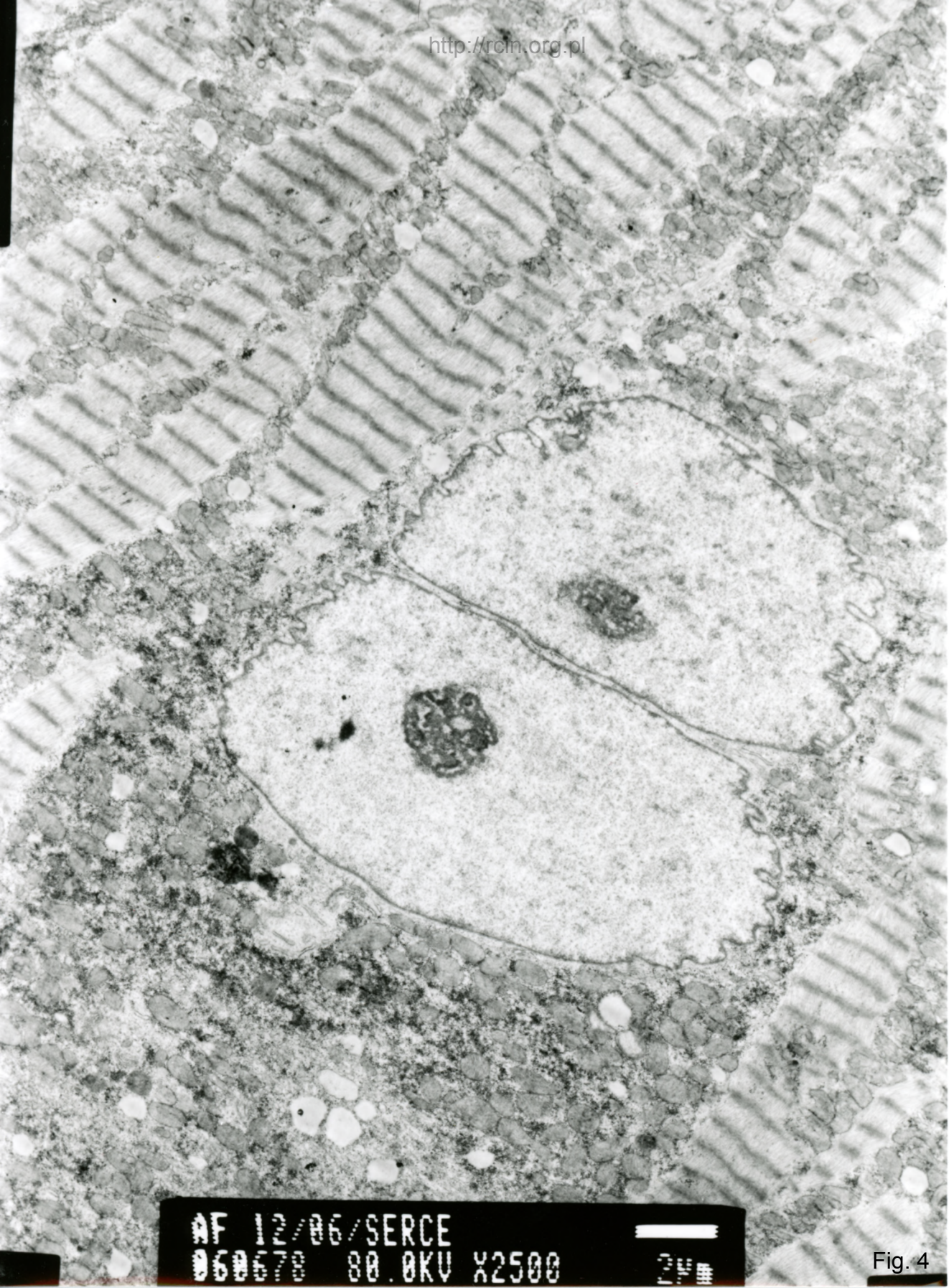


Fig. 2



AF 12/06/SERCE
060677 80.0KV X10K 500nm

Fig. 3



AF 12/06/SERCE
060678 80.0KV X2500 24

Fig. 4

12/06

1. 25

Kardiomiopatia o nieznannej etiologii-podejrzenie ogniskowego zapalenia mięśnia sercowego

Analiza ultrastrukturalna wykazała dezorganizację sarkomerów (Fig. 1-4). Mitochondria w takich kardiomiocytach posiadały zatartą strukturę, a w sarkoplazmie obecne były krople lipidów.

Cardiomyopathy of unknown etiology-suspected focal myocarditis

Ultrastructural analysis revealed sarcomere disorganization (Figs. 1-4). Mitochondria in such cardiomyocytes were characterized by a blurred structure and lipid droplets were present in the sarcoplasm.