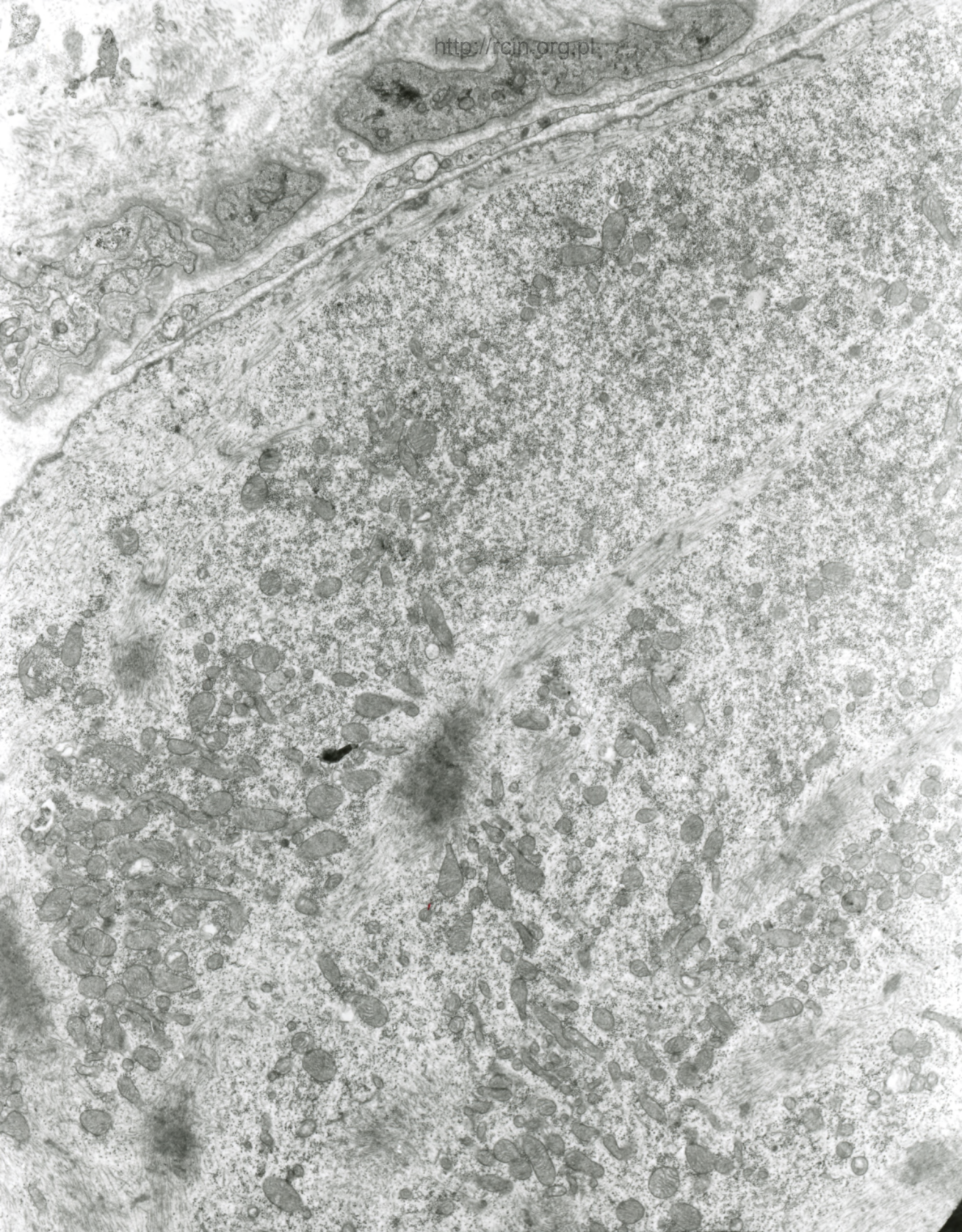


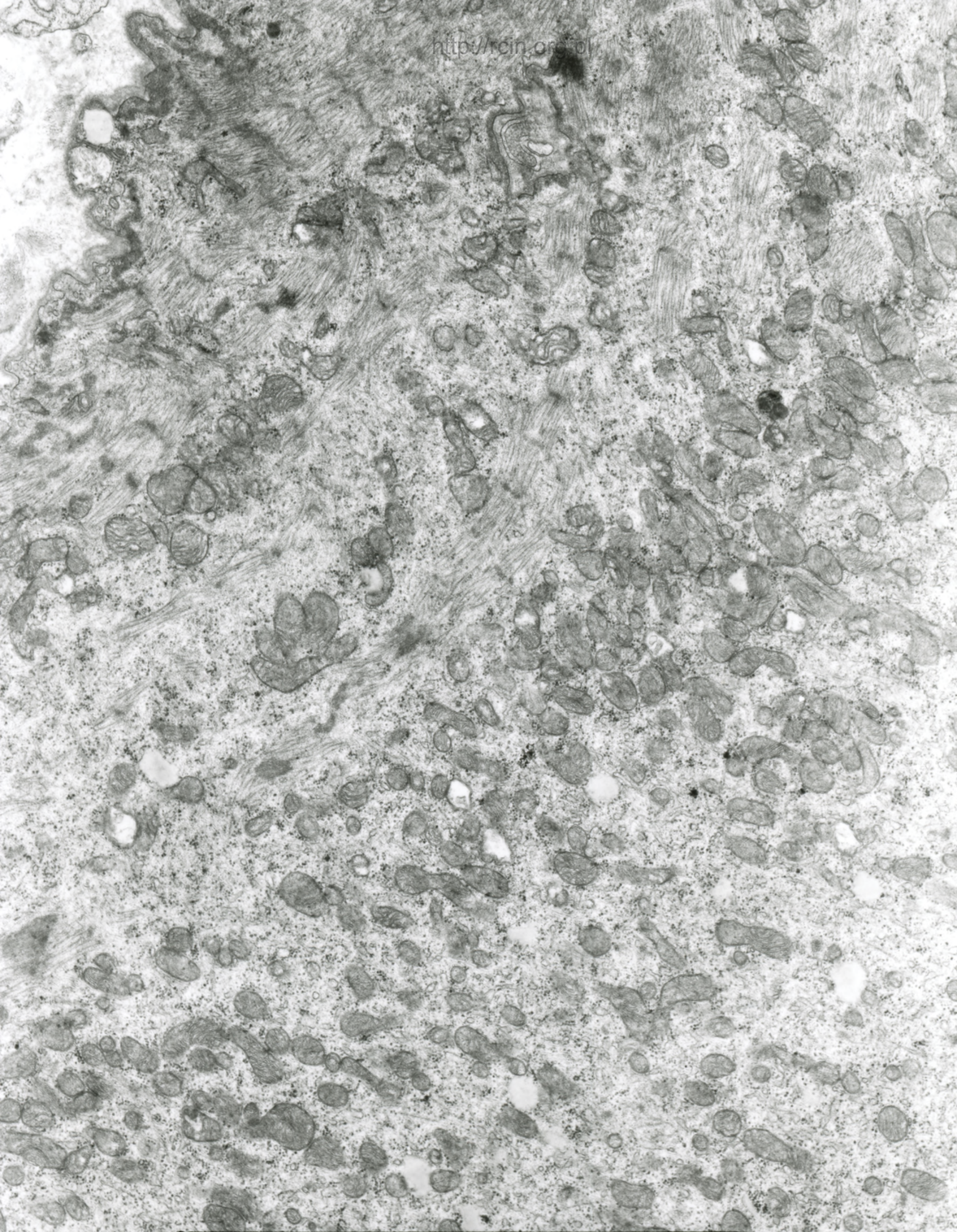
AF 70/06/SERCE
070942 8A AKU X2500

Fig. 1



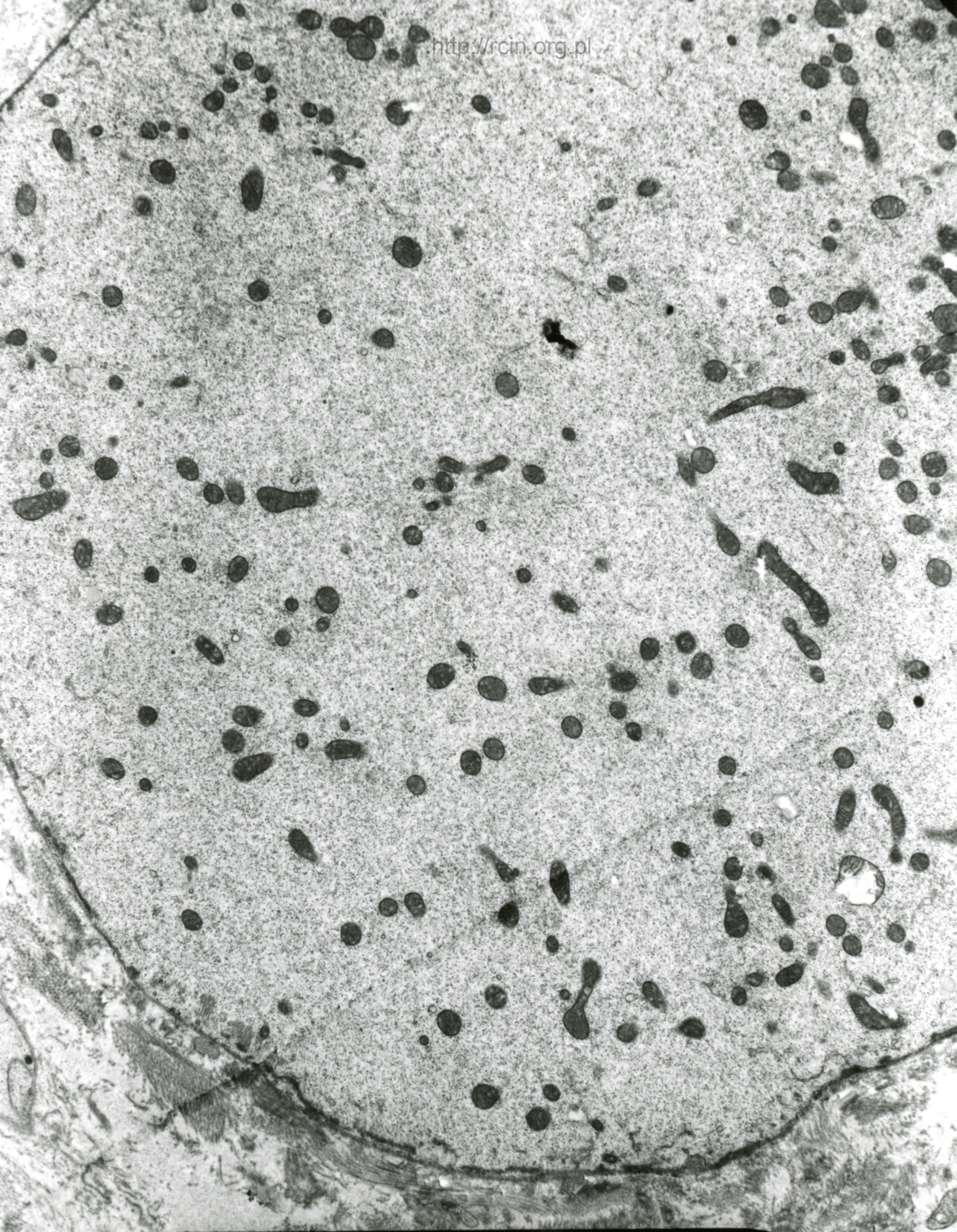
AF 70/06/SERCE
070943 80.0KV X3000 2µm

Fig. 2



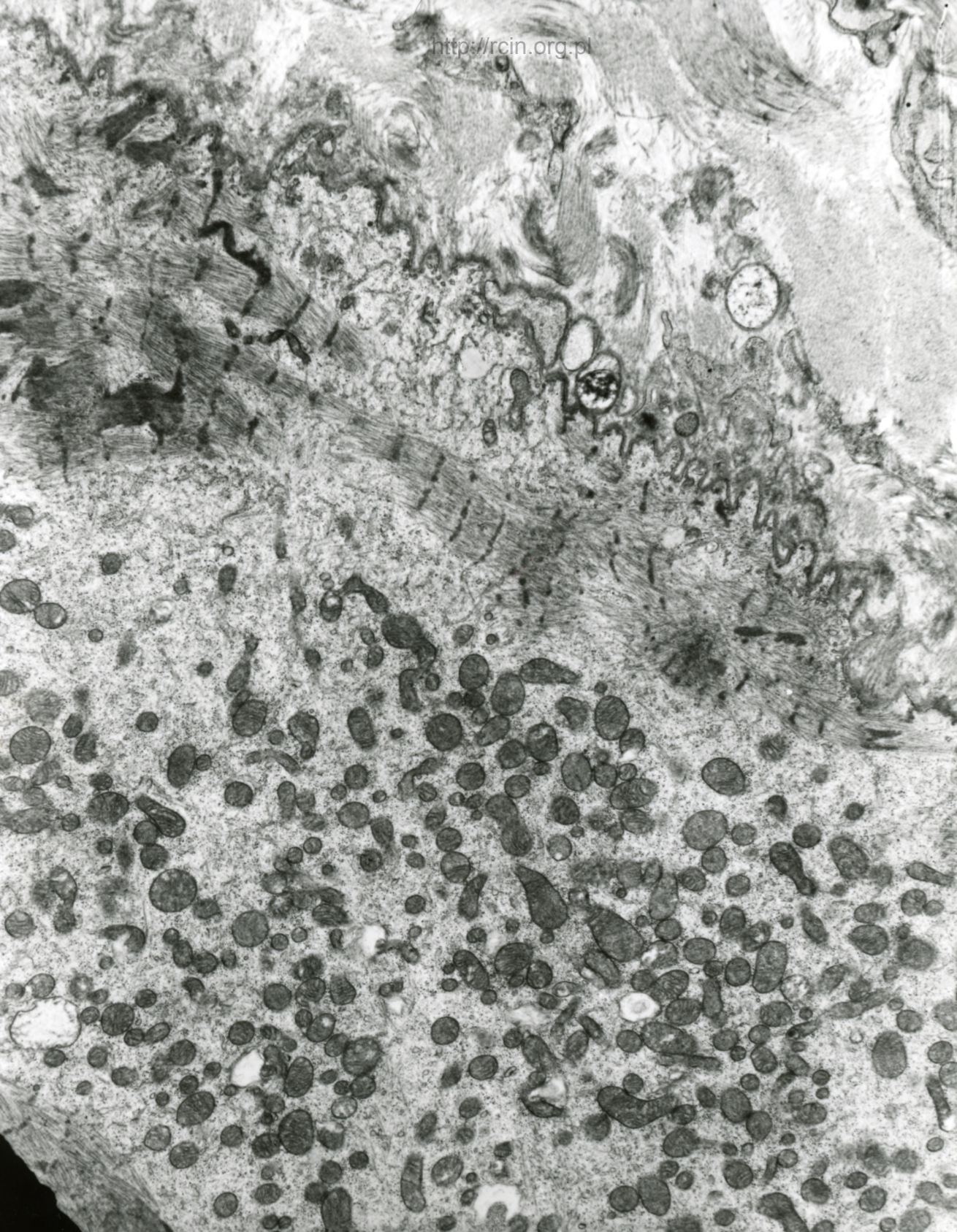
AF 70/06/SERCE
070939 88 AKU X5000

Fig. 3



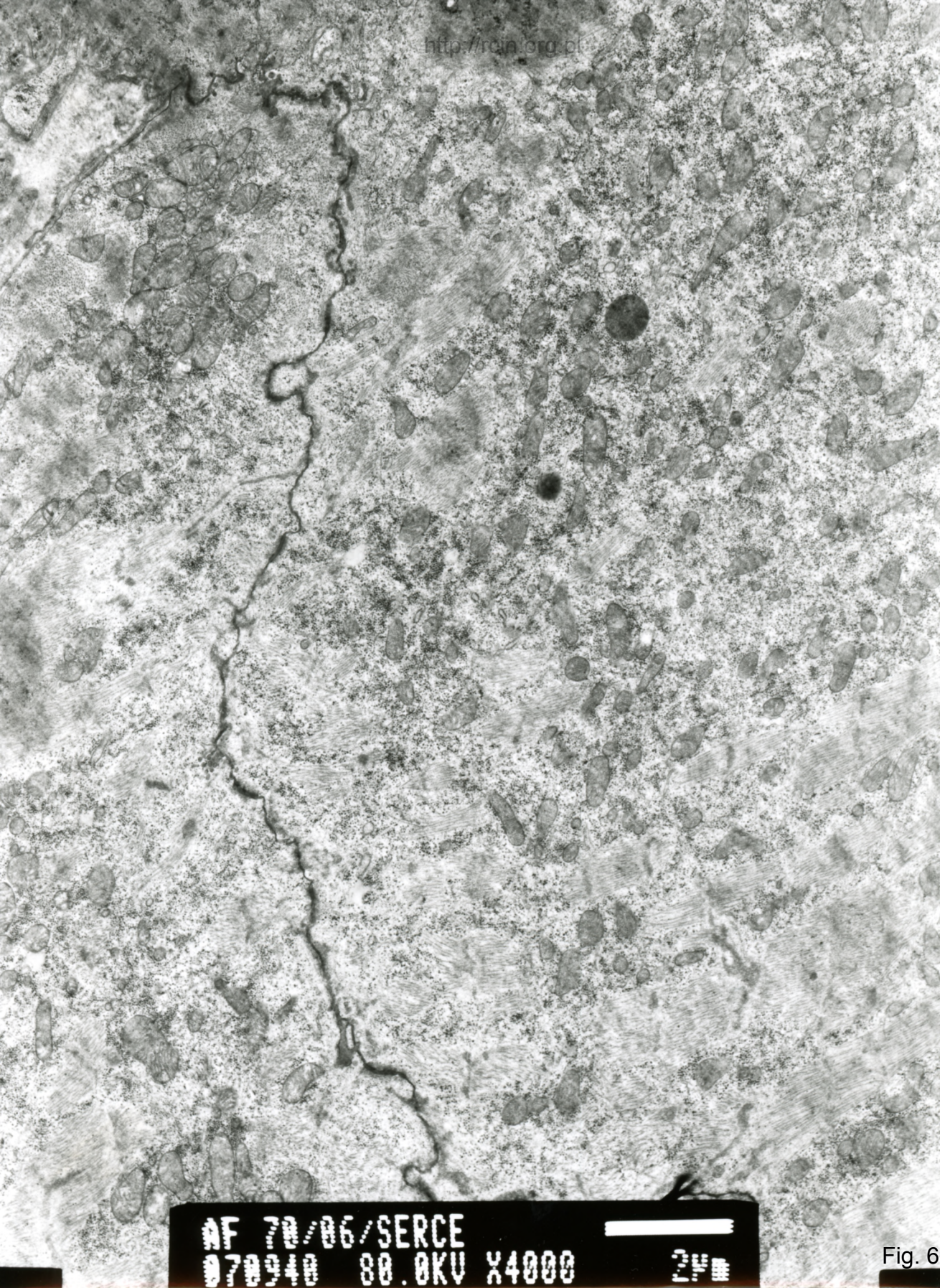
AF 70/06
070 30 80 0KV X3000

Fig. 4



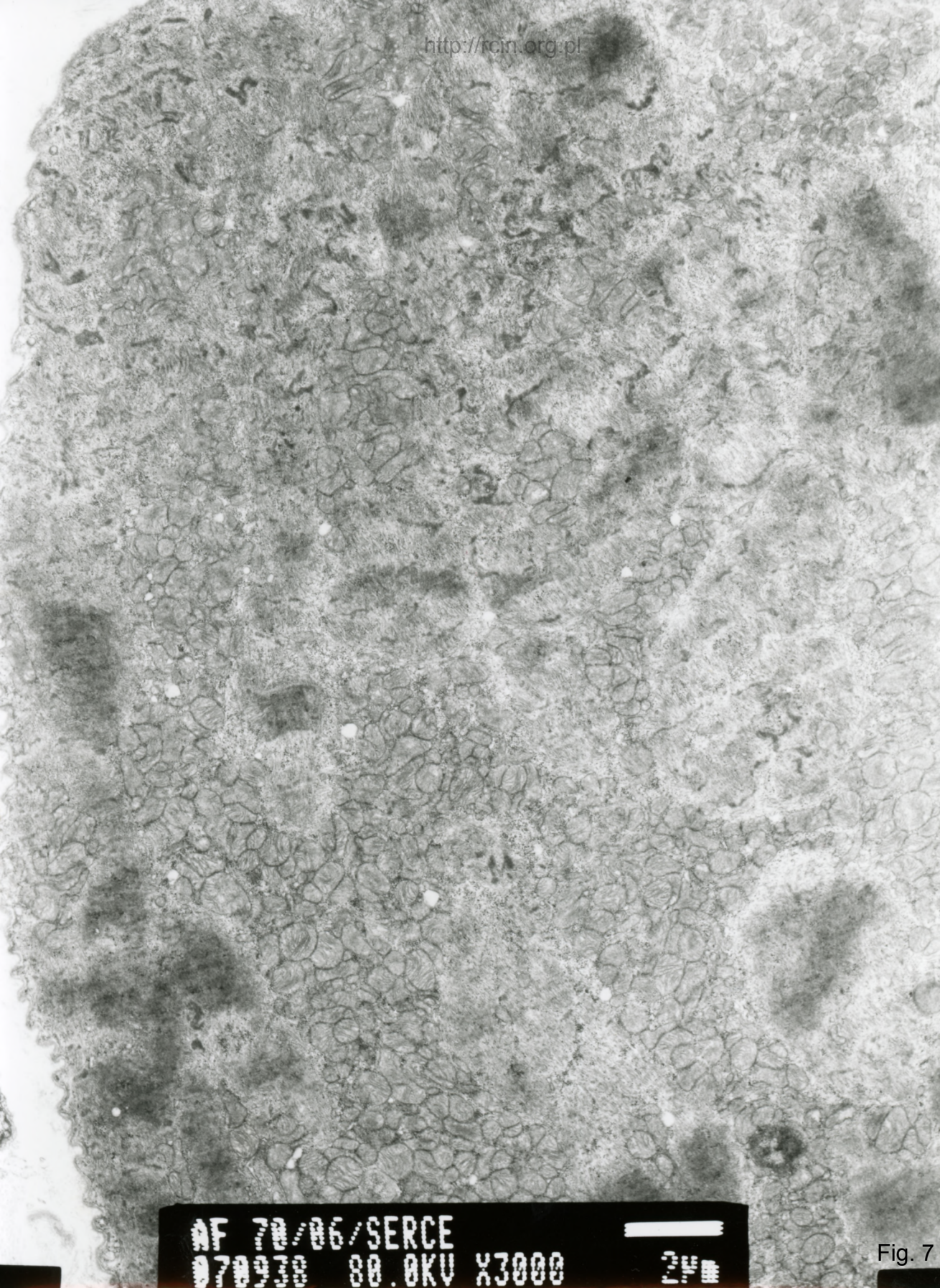
AF 70/06
070120 80 AKU Y4000 35#

Fig. 5



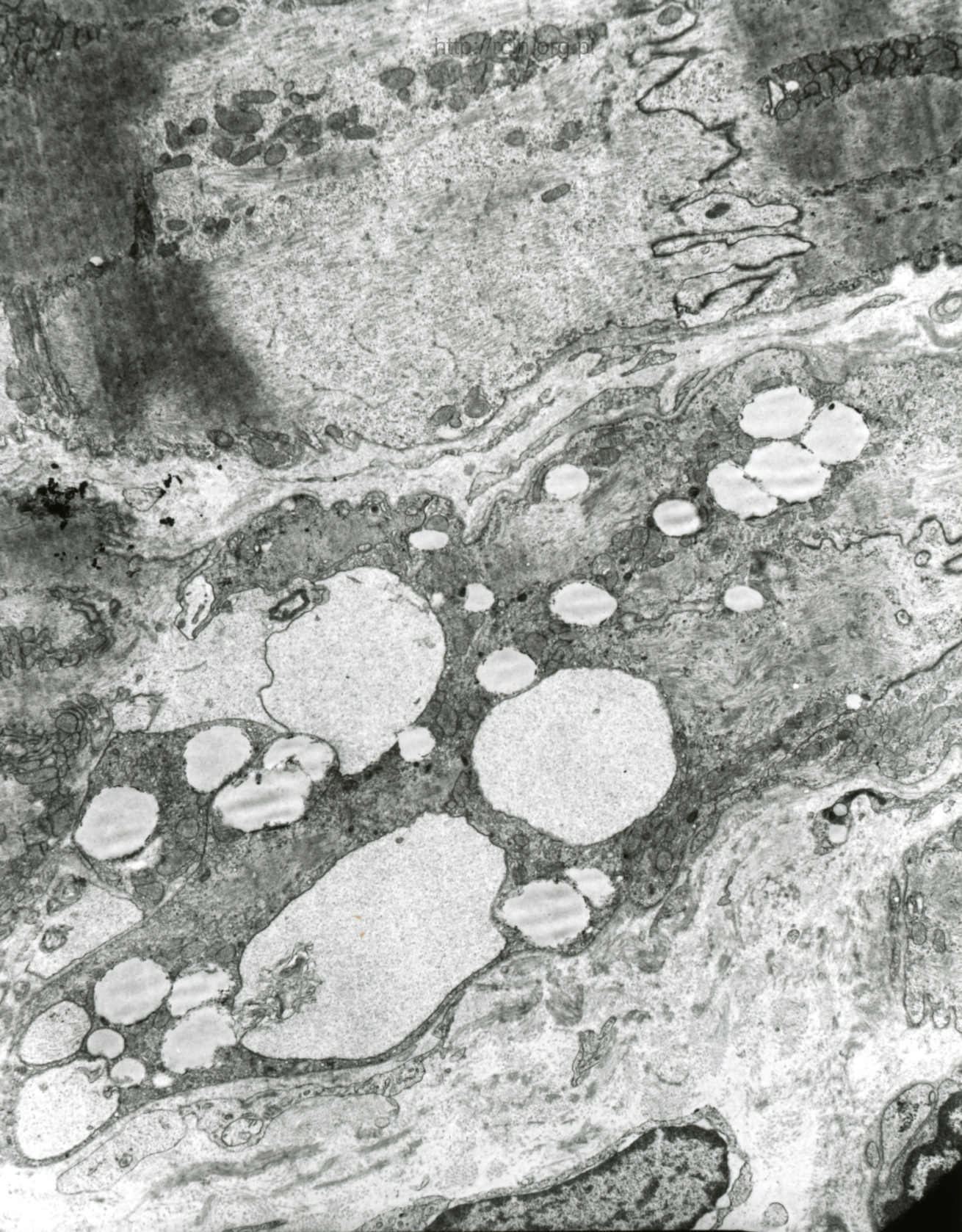
AF 70/06/SERCE
070940 80.0KV X4000 24

Fig. 6



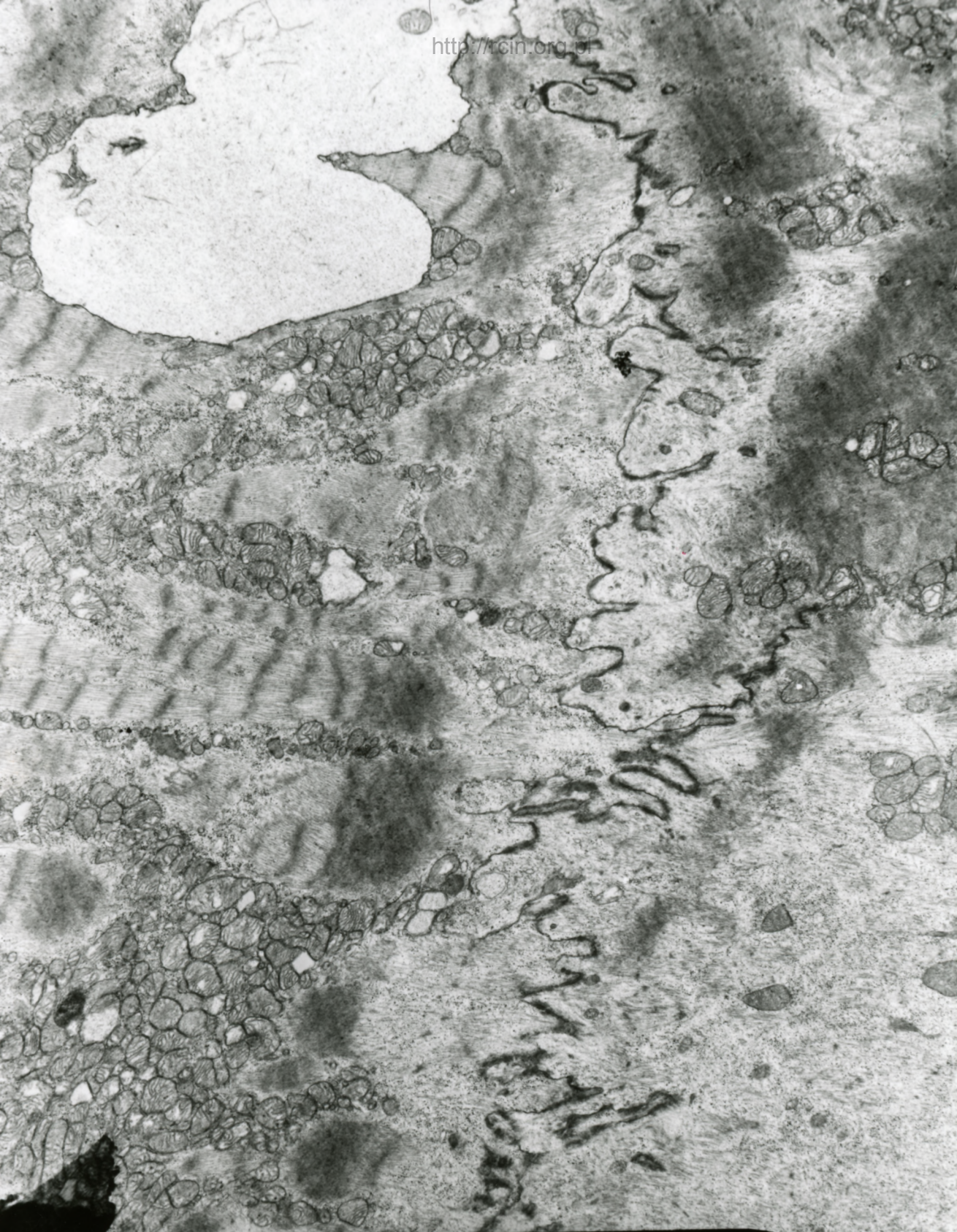
AF 70/06/SERCE
070938 80.0KV X3000 24

Fig. 7



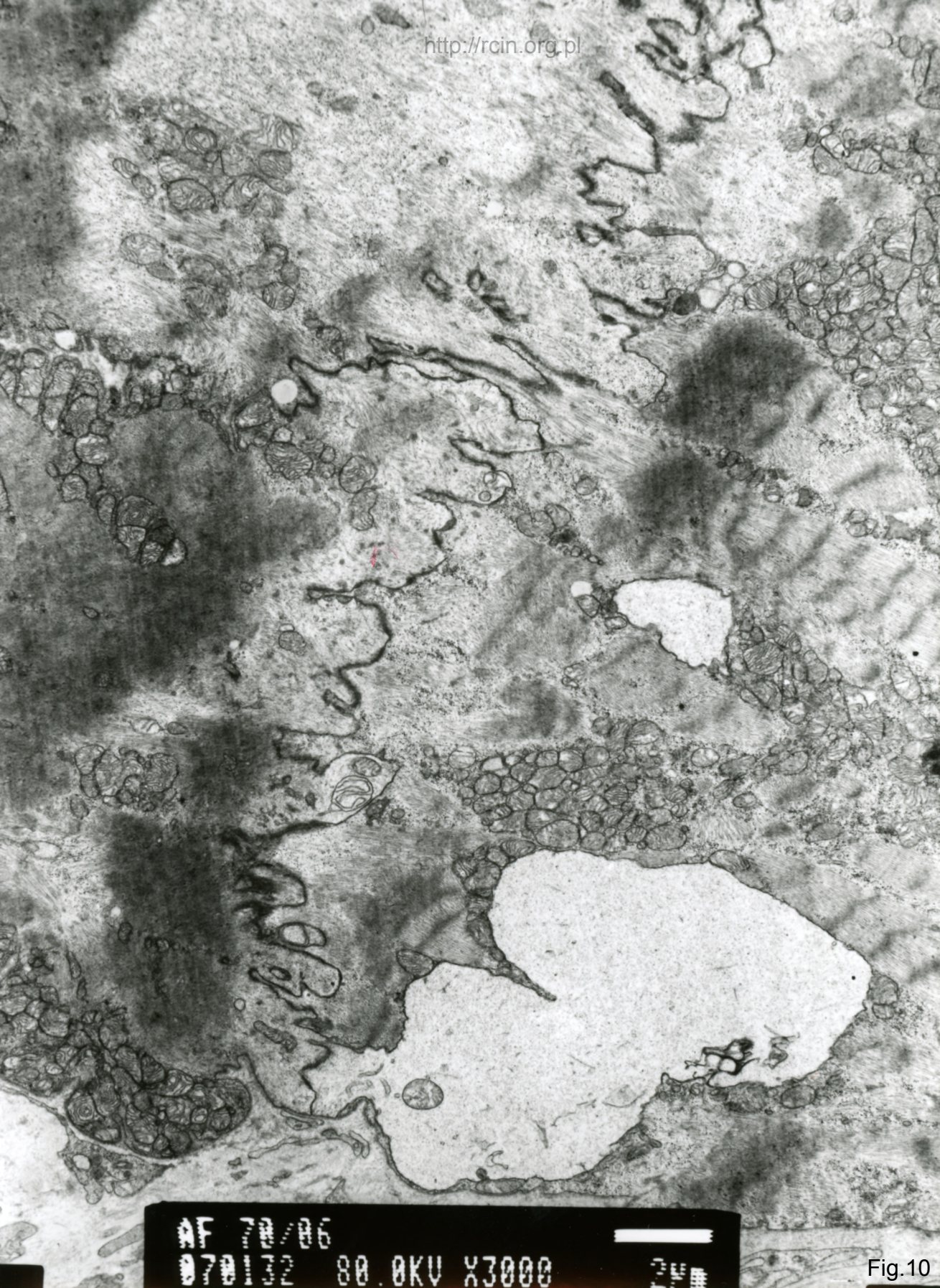
AF 70/06
070131 80.0KV X2500 24

Fig. 8



AF 70/06
070124 80 AKU X3000

Fig. 9



AF 70/06
070132 80.0KV X3000

Fig.10

70/06

1. 14

Twardzina układowa, biopsja po wszczepieniu sztucznych komór

Analiza ultrastrukturalna wykazała dezorganizację sarkomerów i cechy miocytolizy w wielu kardiomiocytach (Fig. 1-7). W wielu komórkach obecne były wakuole (Fig. 8-10).

Systemic sclerosis, biopsy after artificial ventricles implantation

Ultrastructural analysis revealed sarcomere disorganization and features of myocytolysis in many cardiomyocytes (Figs. 1-7). Vacuoles were present in numerous cells (Figs. 8-10).