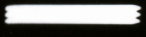
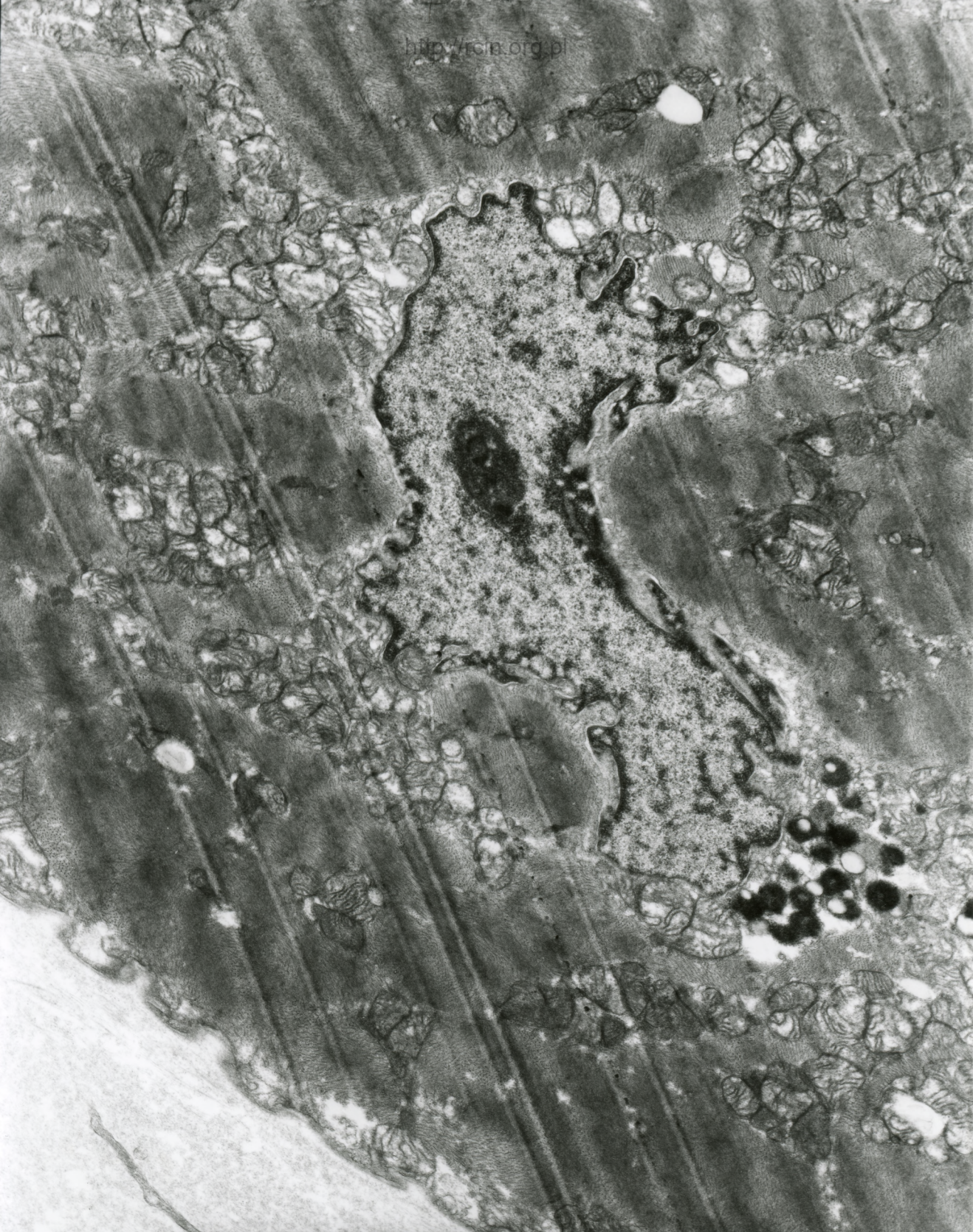


AF 10/07/SERCE
070057 80.0KV X3000

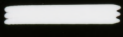


2μm

Fig. 1

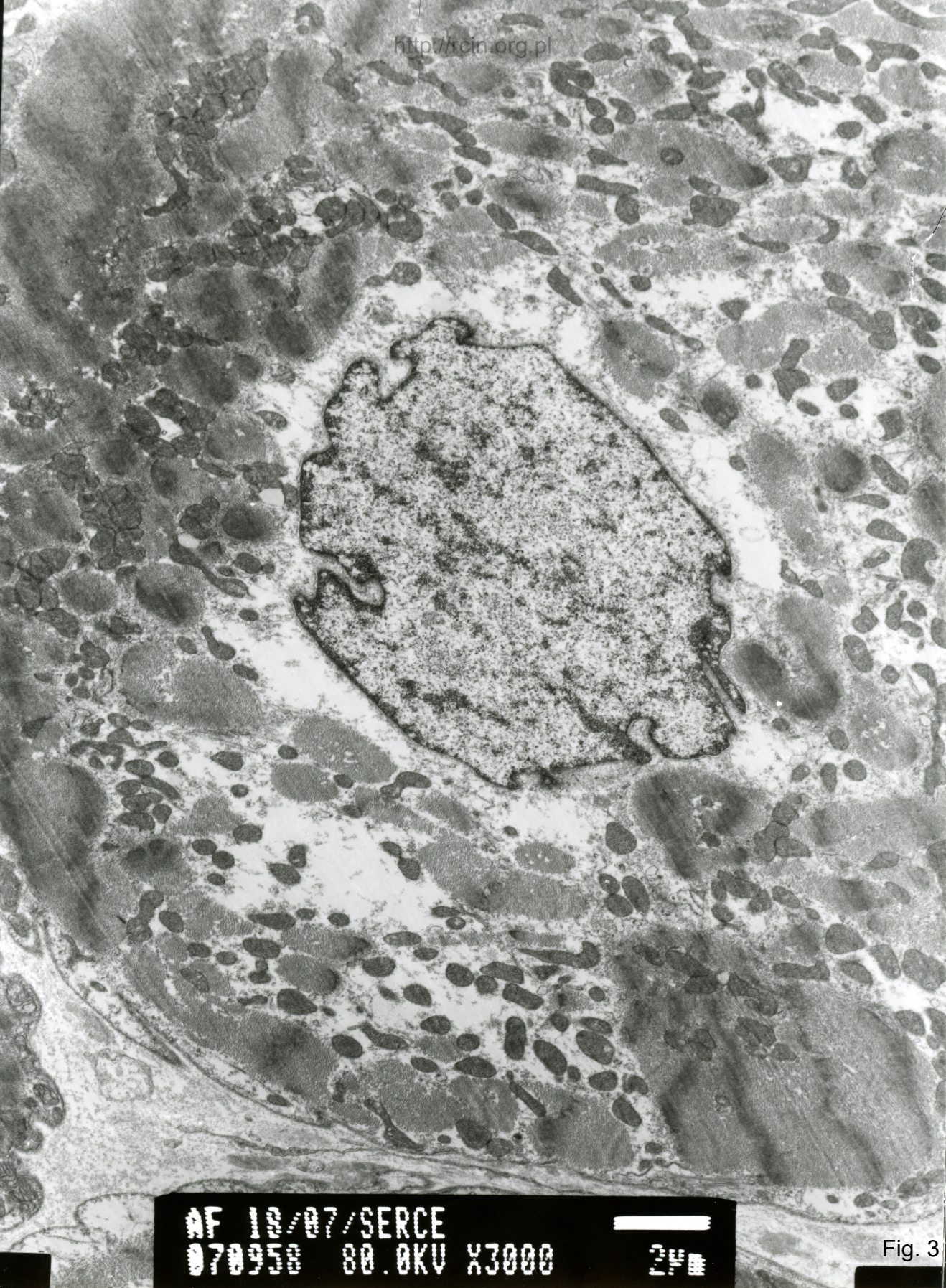


AF 18/07/SERCE
070959 80.0KV X5000



1/μm

Fig. 2



AF 18/07/SERCE
070958 80.0KV X3000

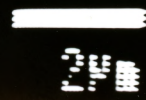
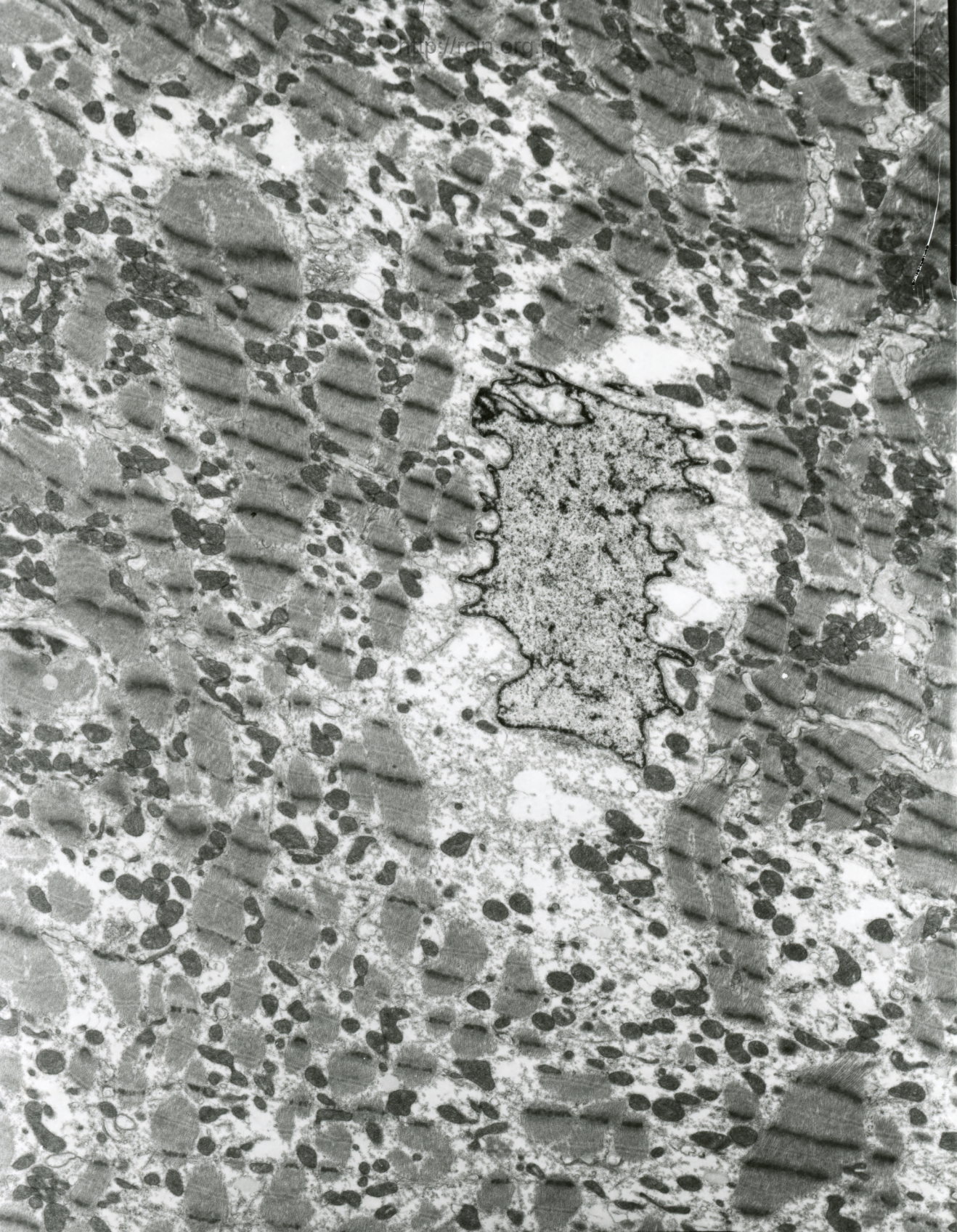
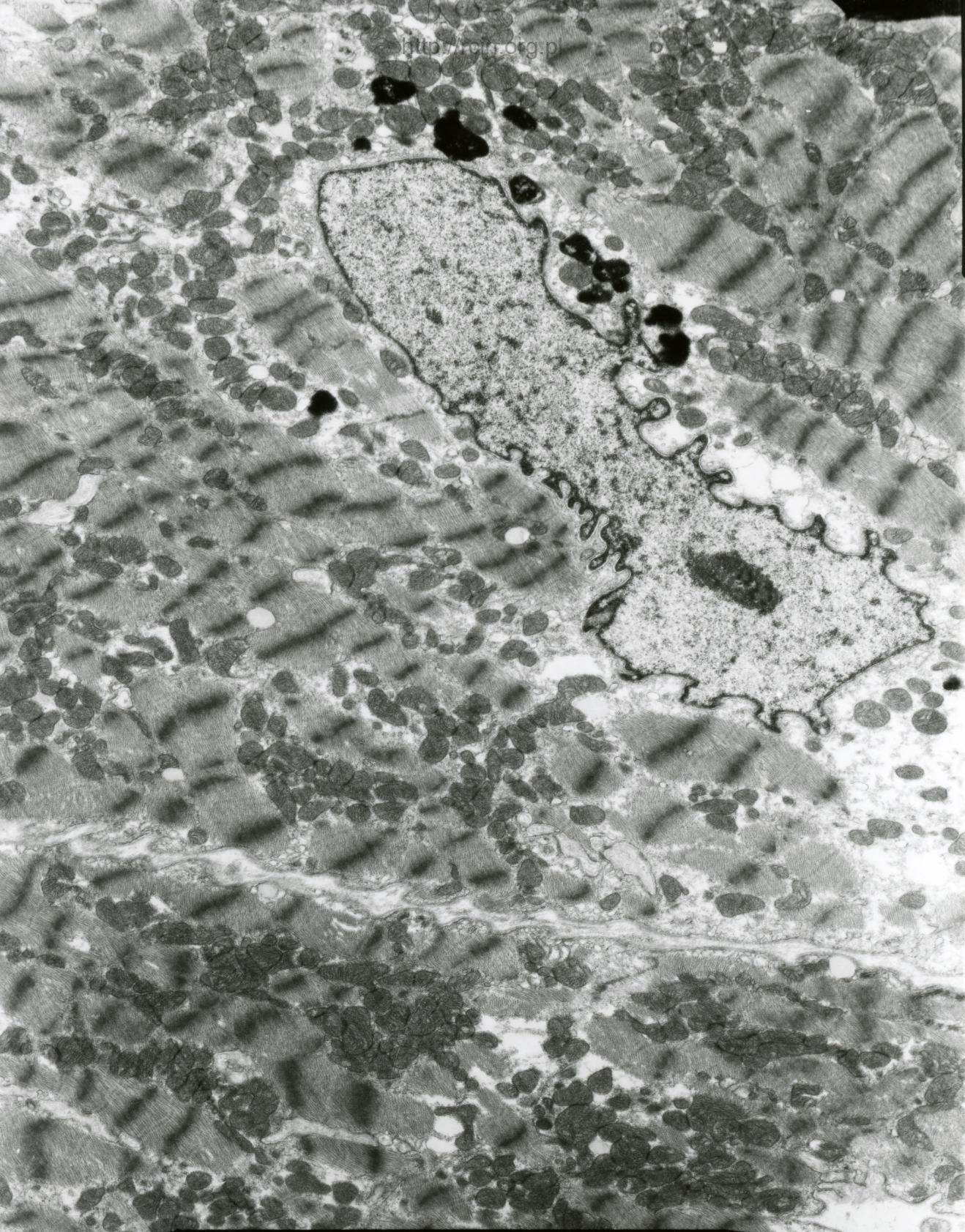


Fig. 3



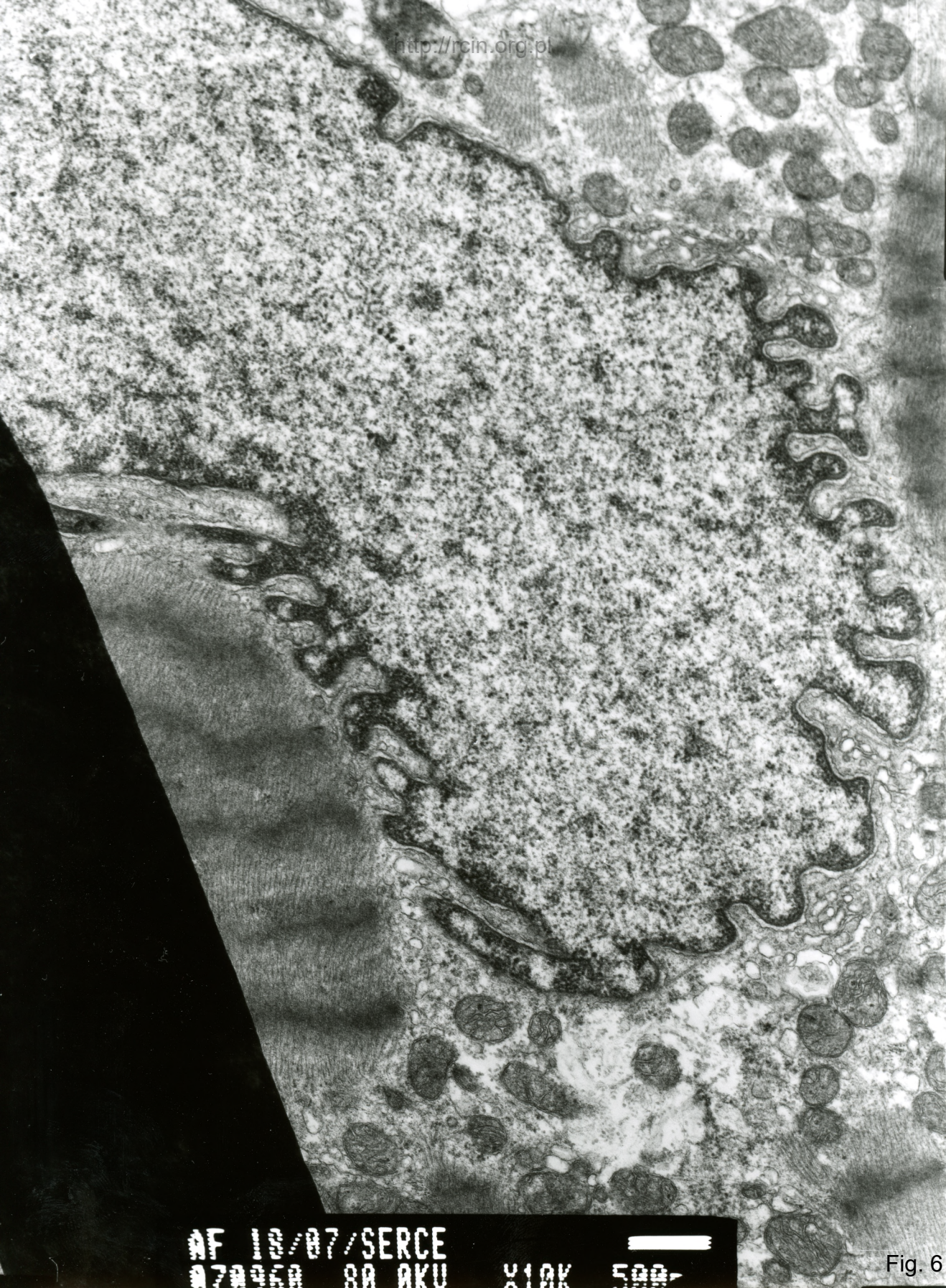
AF 18/07/SERCE
070055 00 AKU 22500 3U

Fig. 4



AF 10/07/SERCE
070256 80.0KV X3000

Fig. 5



MF 10/07/SERCE
070050 80 AKU X10K 500

Fig. 6

18/07

Analiza ultrastrukturalna wykazała zaburzenia w układzie sarkomerów. W niektórych kardiomiocytach obserwowano cechy miocytolizy (Fig. 1-3). Jądra kardiomiocytów posiadały nieregularny kształt i liczne wgłobienia w otoczce jądrowej (Fig. 4-6).

Ultrastructural evaluation revealed altered sarcomeres arrangement. In some cardiomyocytes the features of myocytolysis were observed (Figs. 1-3). Nuclei were irregularly shaped and numerous indentations in the nuclear envelopewere seen (Figs.4-6).