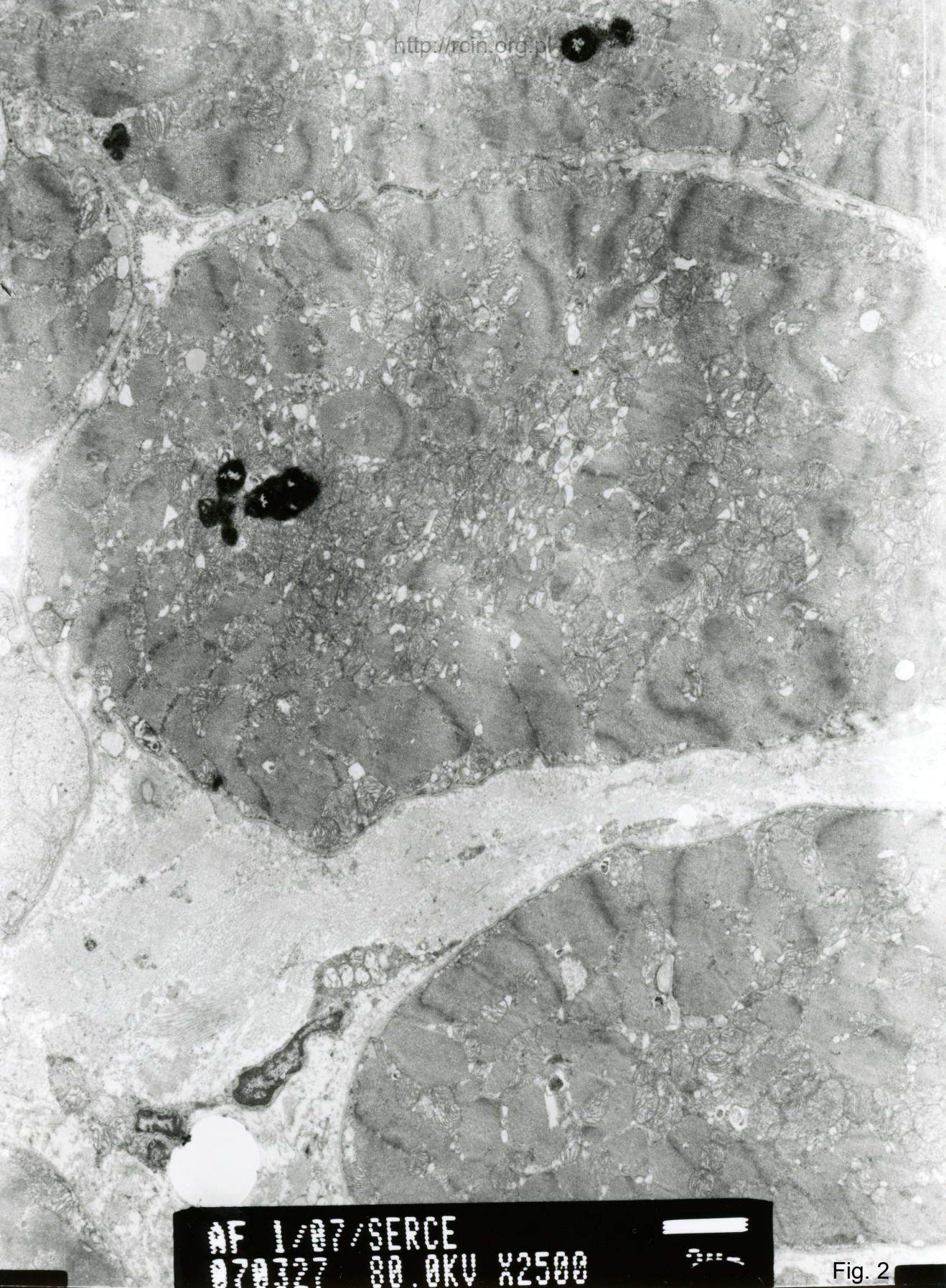


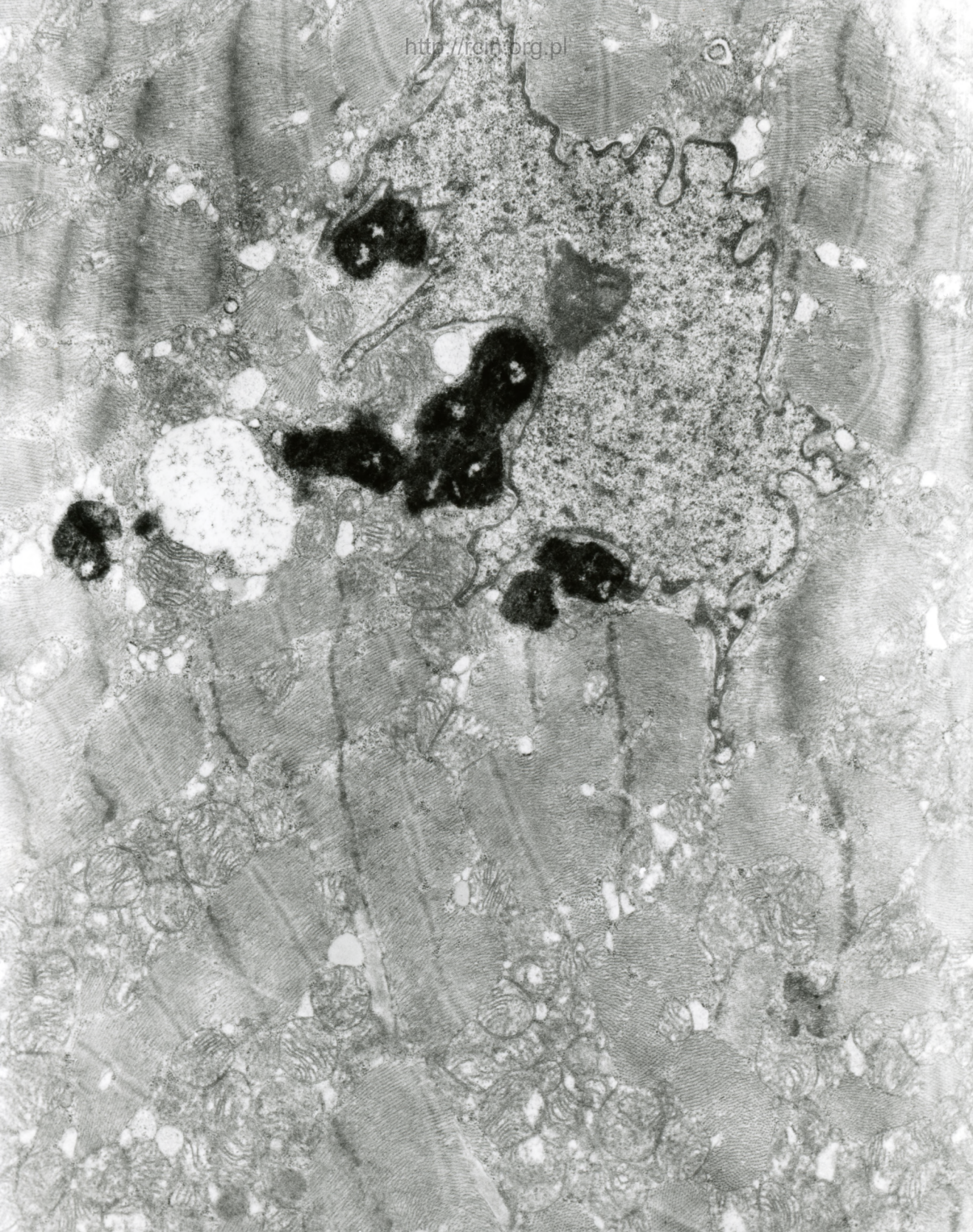
AF 1/07/SERCE  
070329 88.0KV X3000

Fig. 1



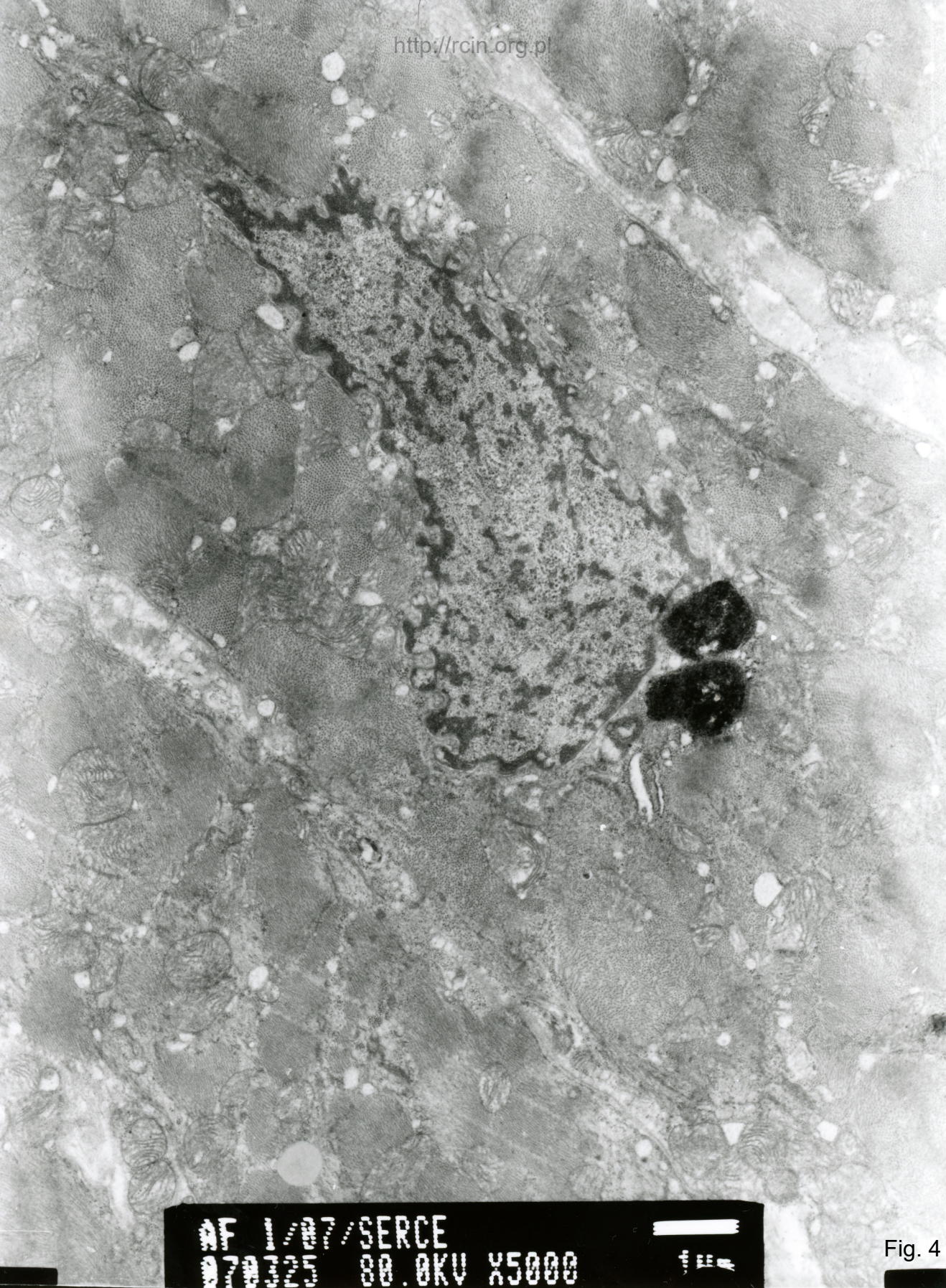
AF 1/07/SERCE  
0702/07 00.0KV X2500

Fig. 2



AF 1/07/SERCE  
070120 00.0KV X5000

Fig. 3



AF 1/07/SERCE  
070125 80.0KV X5000

Fig. 4



AF 1/07/SERCE  
070126 88.0KV X2500

Fig. 5

1/07

Analiza ultrastrukturalna wykazała zaburzenia w przebiegu miofibryli w niektórych kardiomiocytach (Fig. 1,2). Jądra kardiomiocytów posiadały nieregularny kształt (Fig.3,4). Śródbłonek naczyń kapilarnych wykazywał cechy nekrozy (Fig.5).

Ultrastructural analysis revealed altered myofibrils arrangement in some cardiomyocytes (Figs.1,2). Cardiomyocytes nuclei were irregularly shaped (Figs.3,4). Capillary endothelium showed features of necrosis (Fig.5).