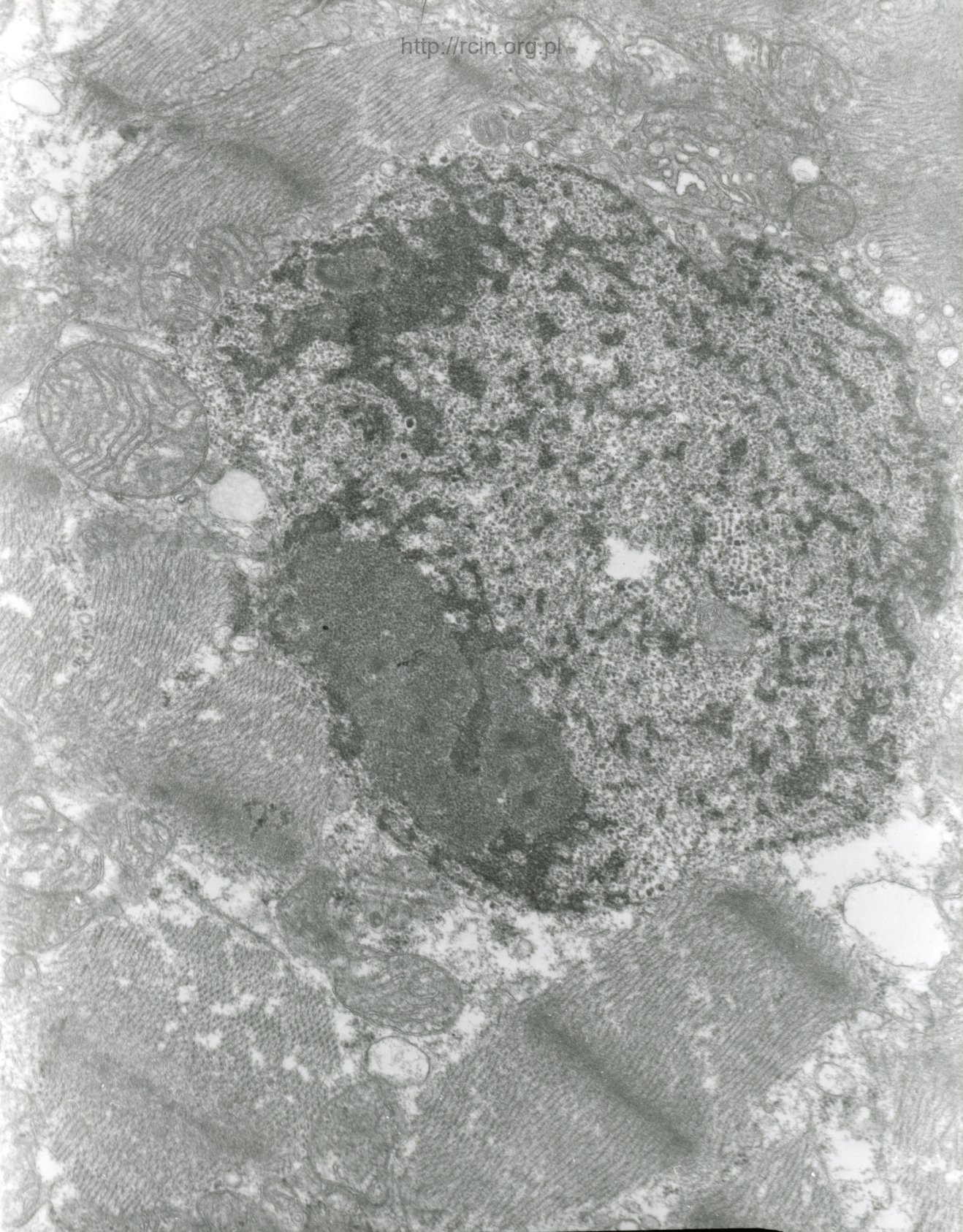




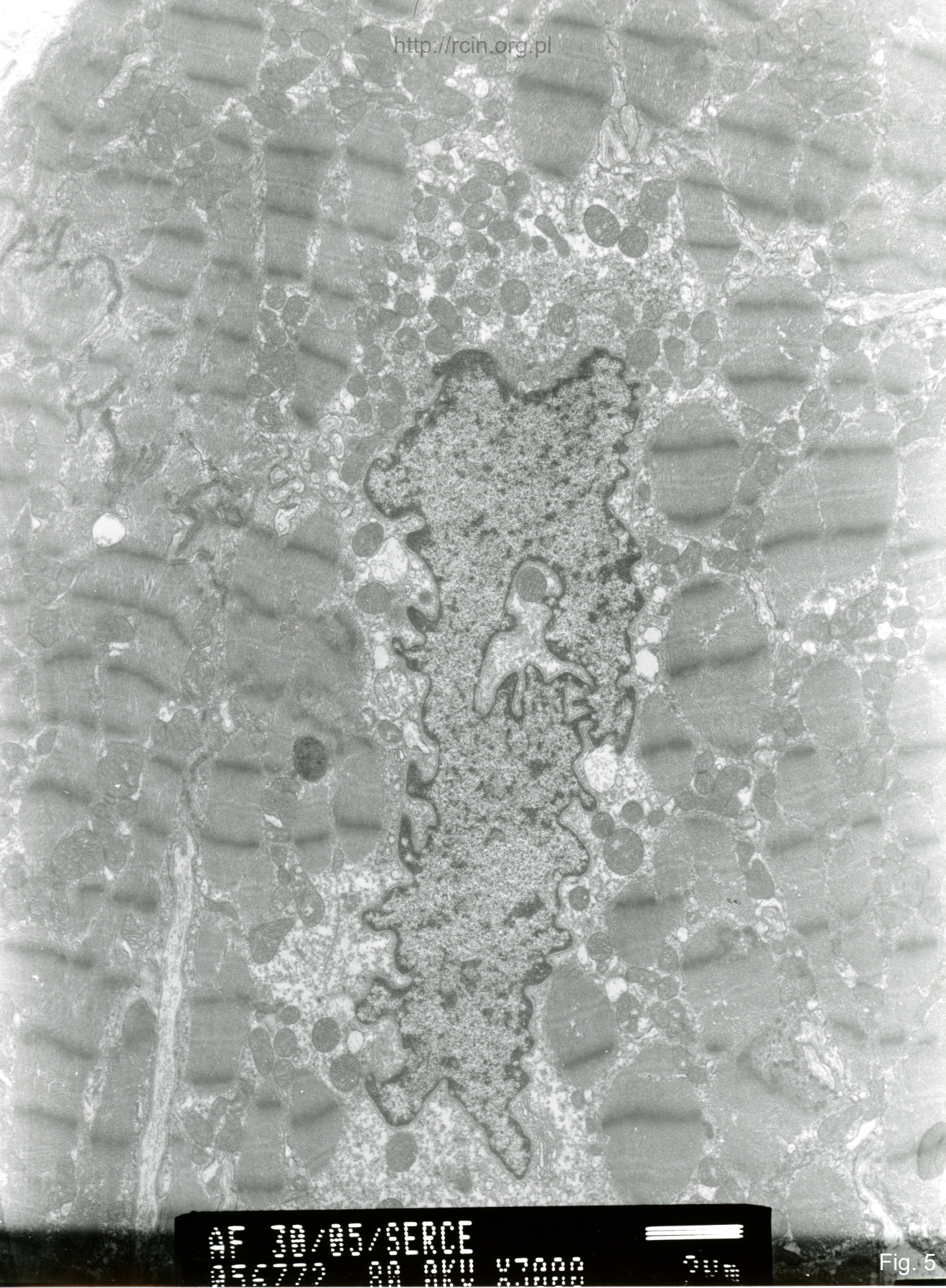
01 30/05/SERCE
005782 00 BKV X7000
30 μm

Fig. 1



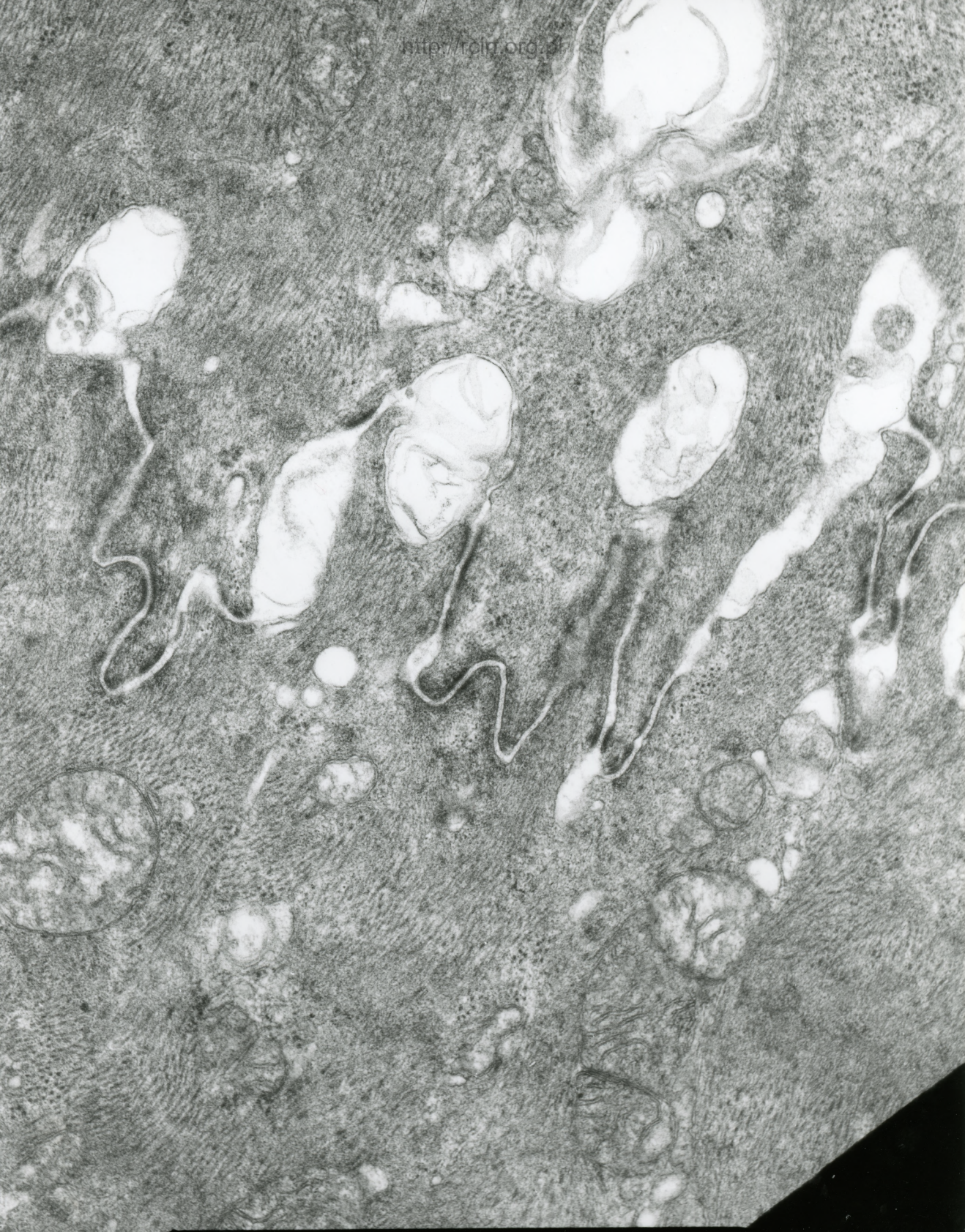
00001 2005/05/SERCE
00000000 00 0000 X10K 500nm

Fig. 3



005/CERCE
U7000
30um

Fig. 5



Micrograph showing a dense network of cytoplasmic filaments and several large, electron-lucent, rounded structures, likely viral particles or inclusion bodies, within a cell. The structures are interconnected by thin, wavy filaments. The background is filled with a complex, fibrous network of cytoplasmic components.

Fig. 6

30/05

Analiza ultrastrukturalna wykazała zmiany w aparacie kurczliwym, zaburzony układ sarkomerów, brak prążkowania w niektórych kardiomiocytach (Fig. 1). Jądra komórek posiadały nieregularny kształt, a także wgłobienia w otoczce jądrowej (Fig. 2). Otoczka czasami ogniskowo była przzerwana (Fig. 3,4,5). Obserwowano duże zmiany w obrębie połączeń między kardiomiocytami, które były znacznie poszerzone (Fig. 6,7).

Ultrastructural analysis revealed changes in the contractile apparatus, altered sarcomeres pattern and lack of cross-striations in some cardiomyocytes (Fig. 1). The nuclei were irregularly shaped with numerous indentations in the nuclear envelope (Fig. 2) In some nuclei the envelope was sometimes focally broken (Figs. 3-5). Junctions between cardiomyocytes were significantly dilated (Figs. 6,7).