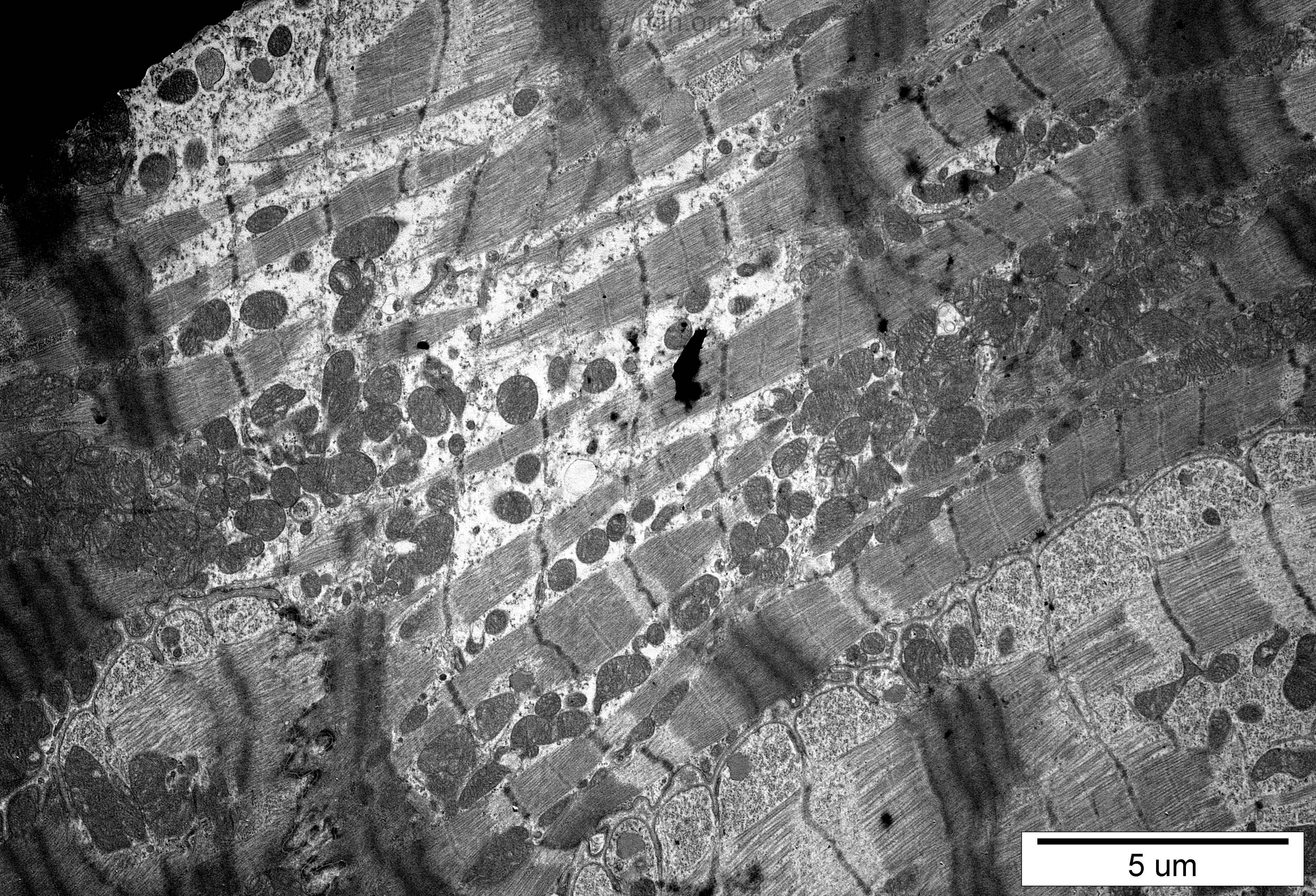
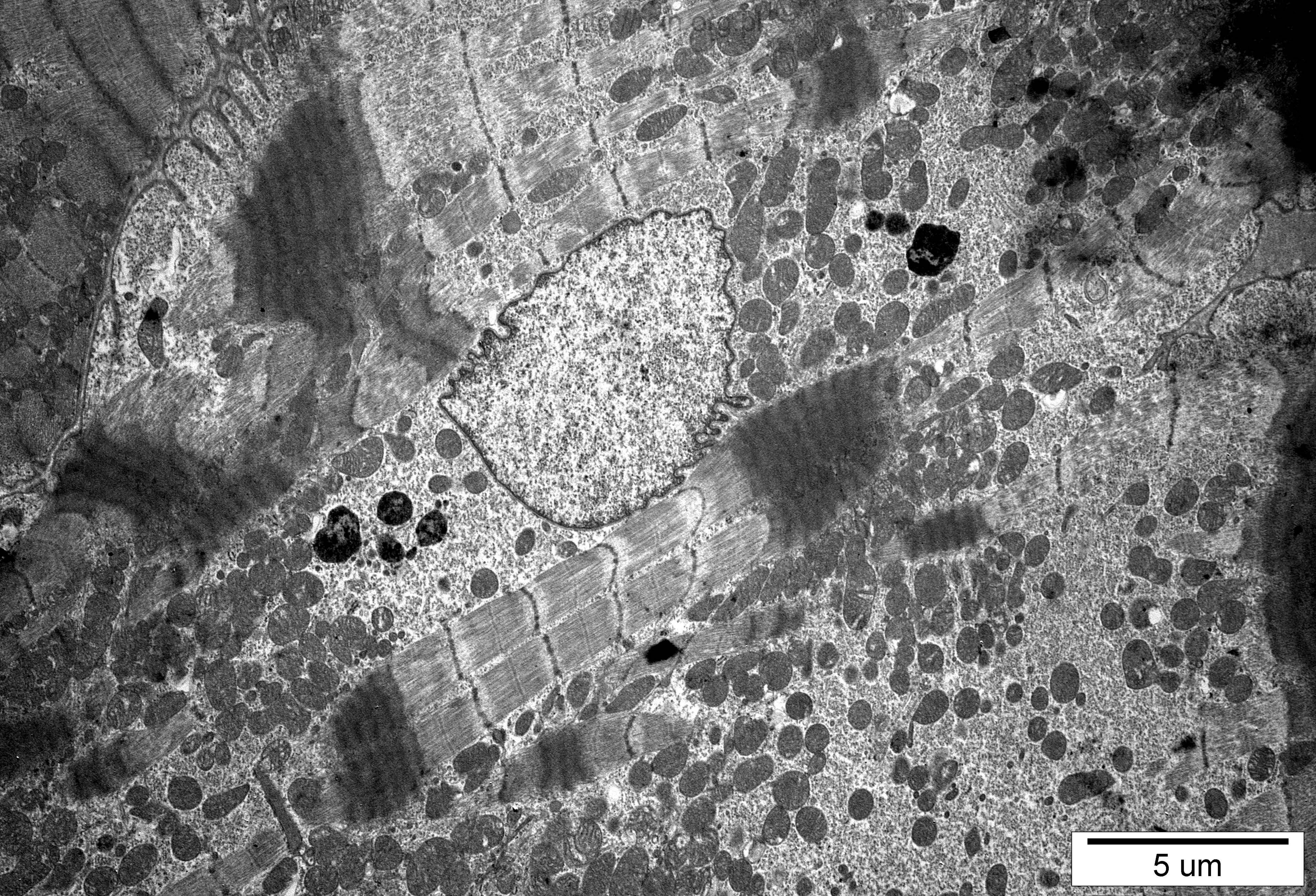




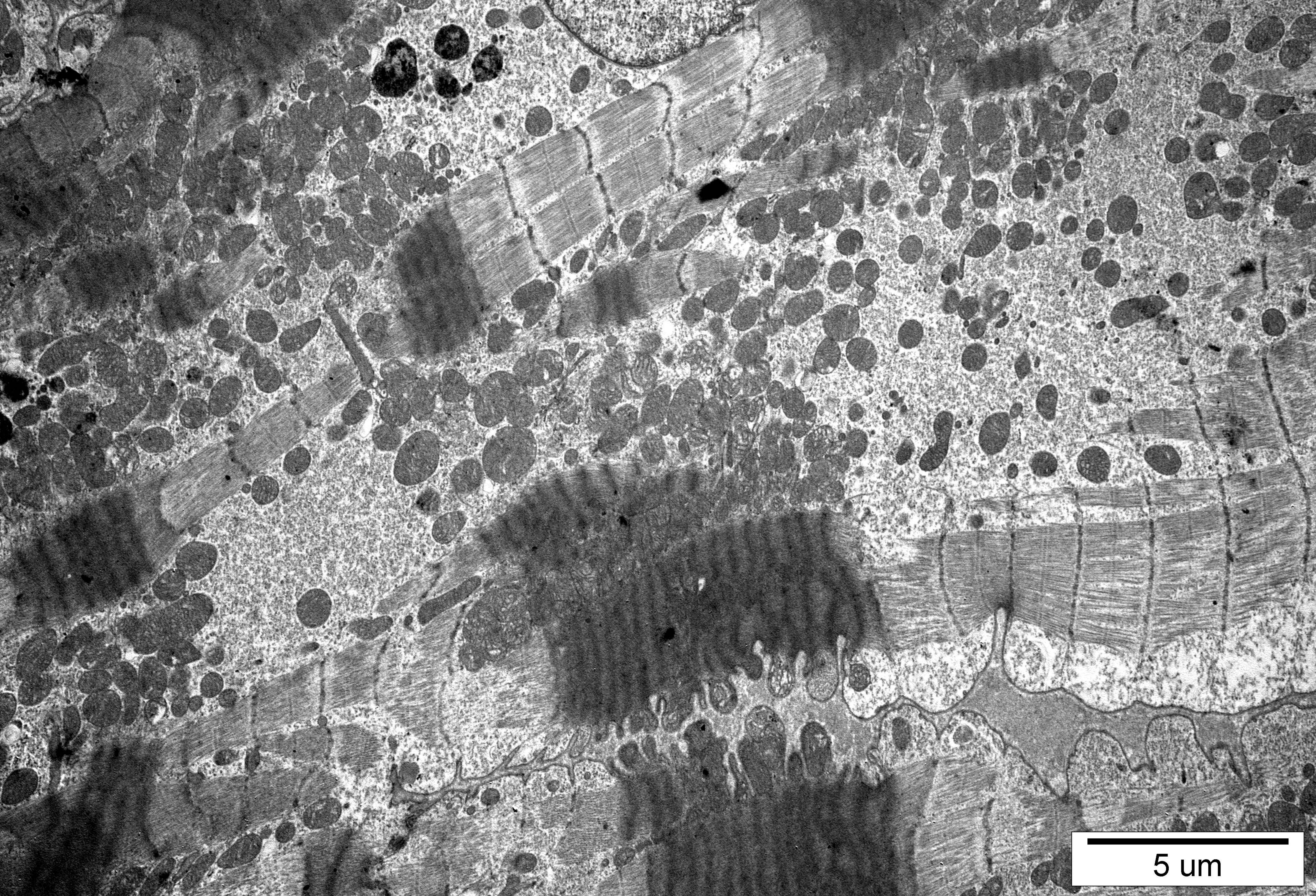
5 μ m



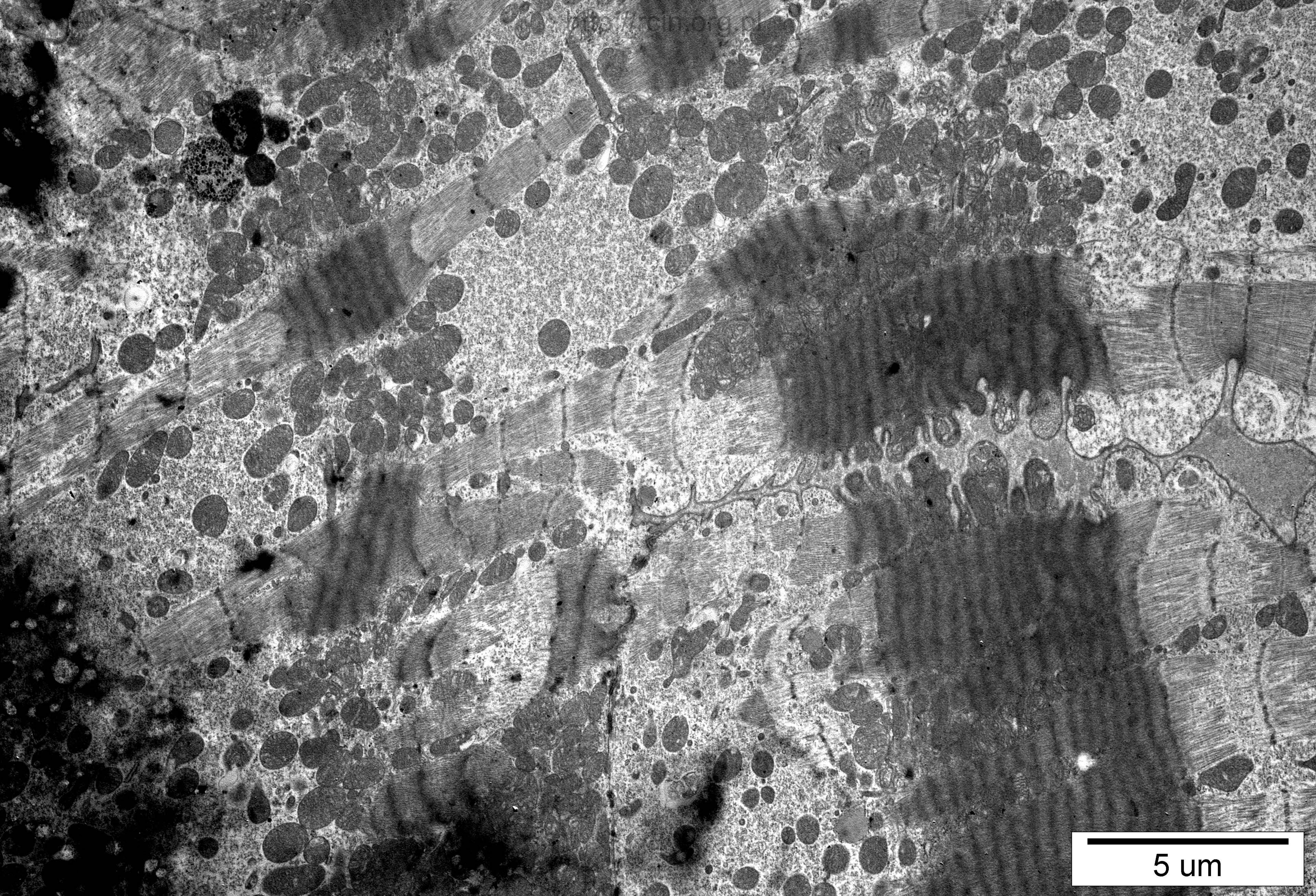
5 um



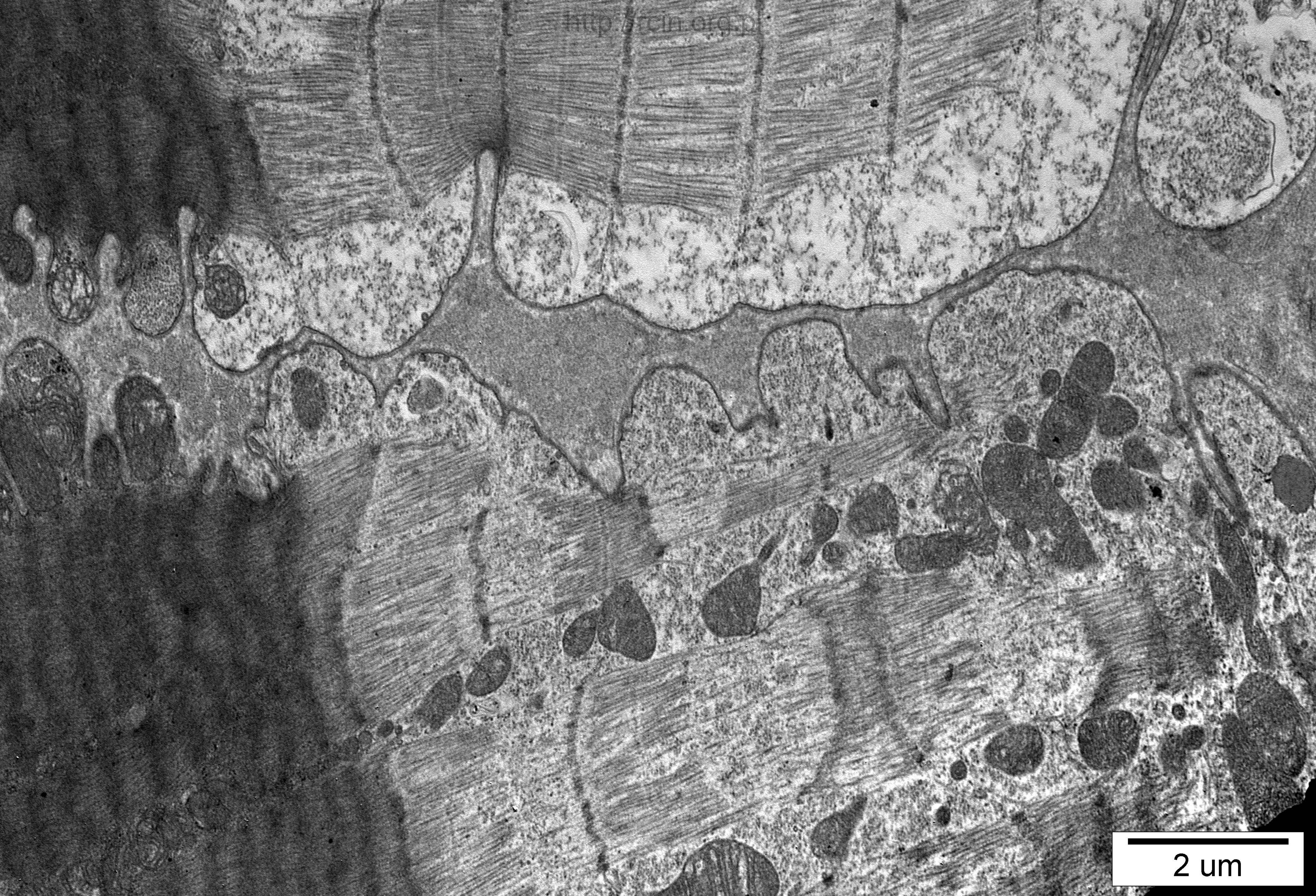
5 um



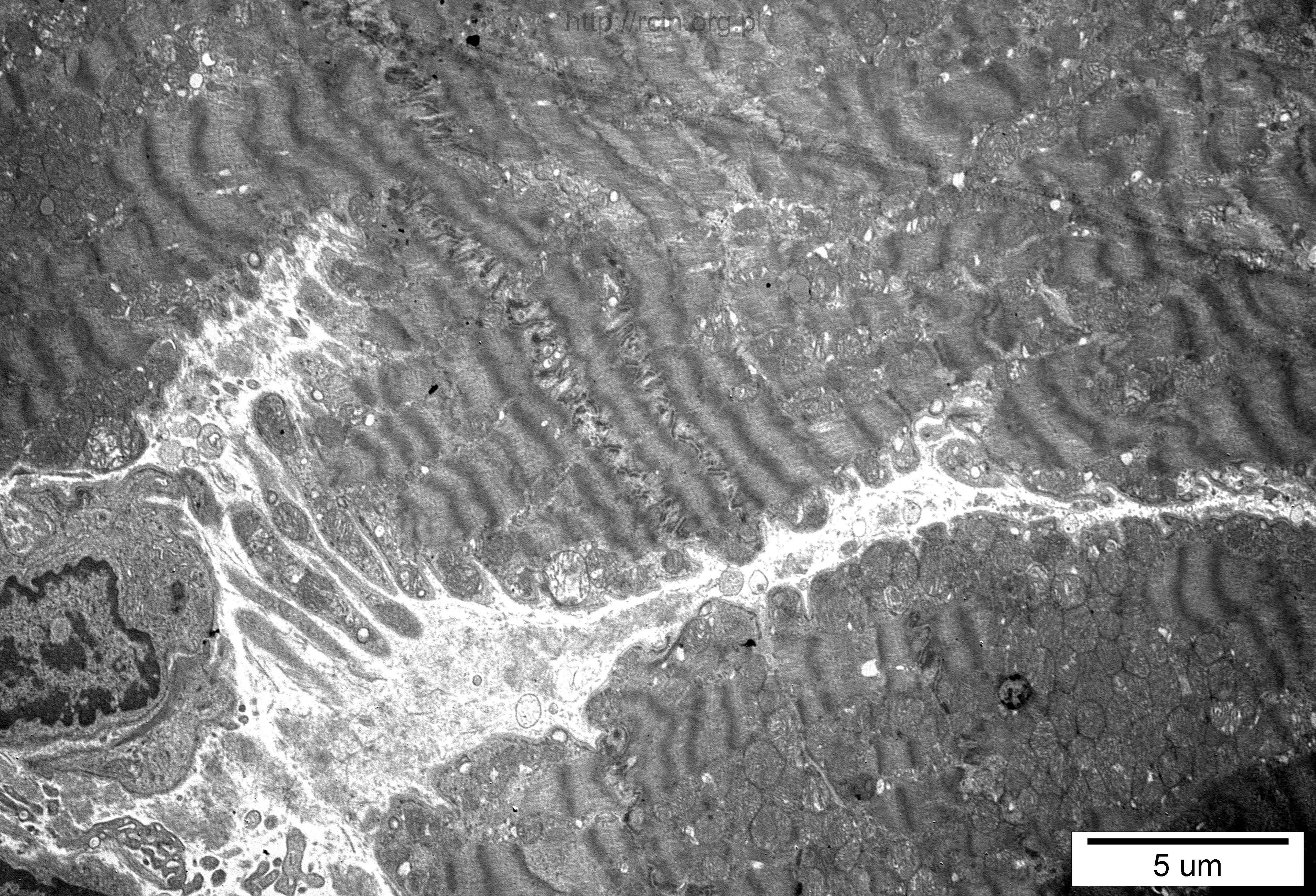
5 um



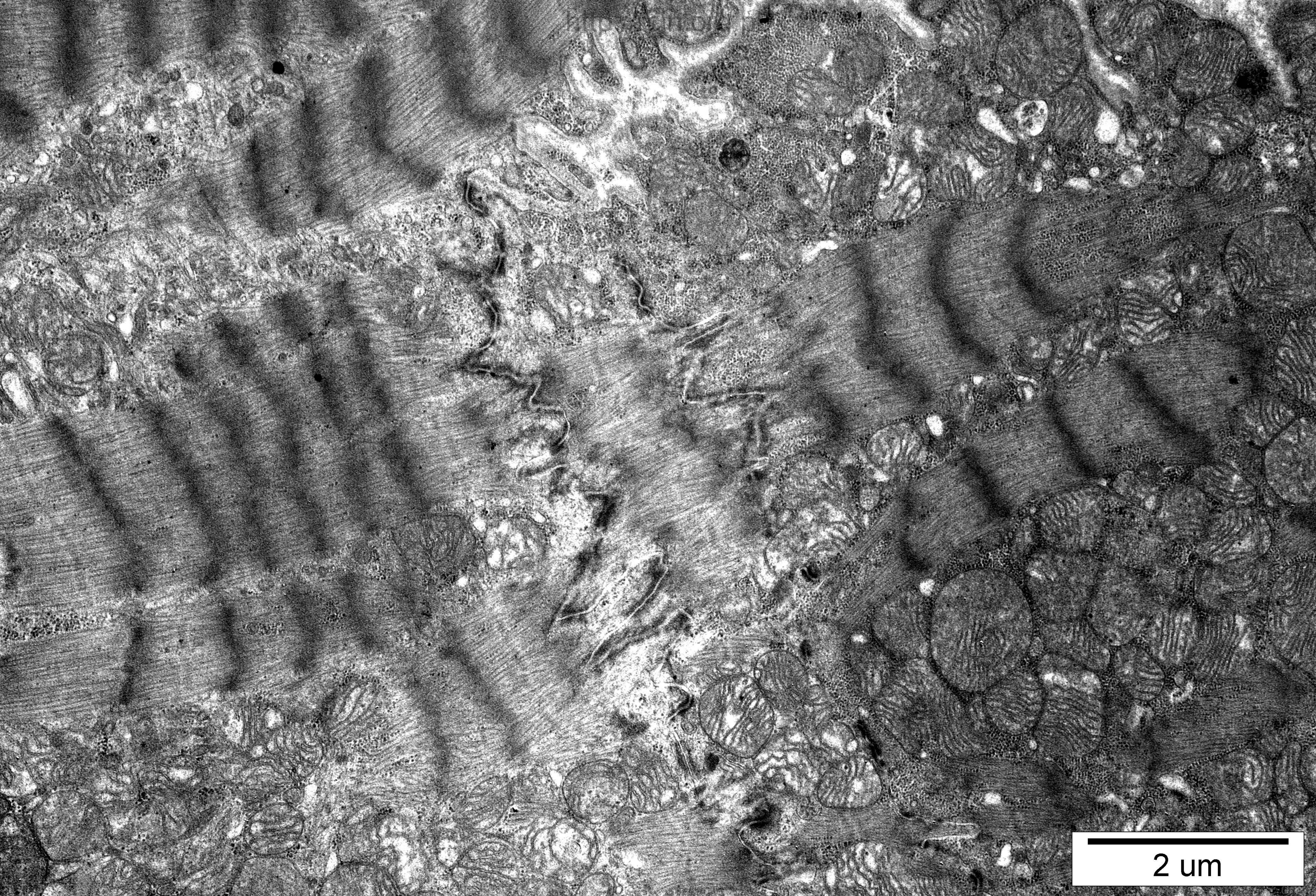
5 μm



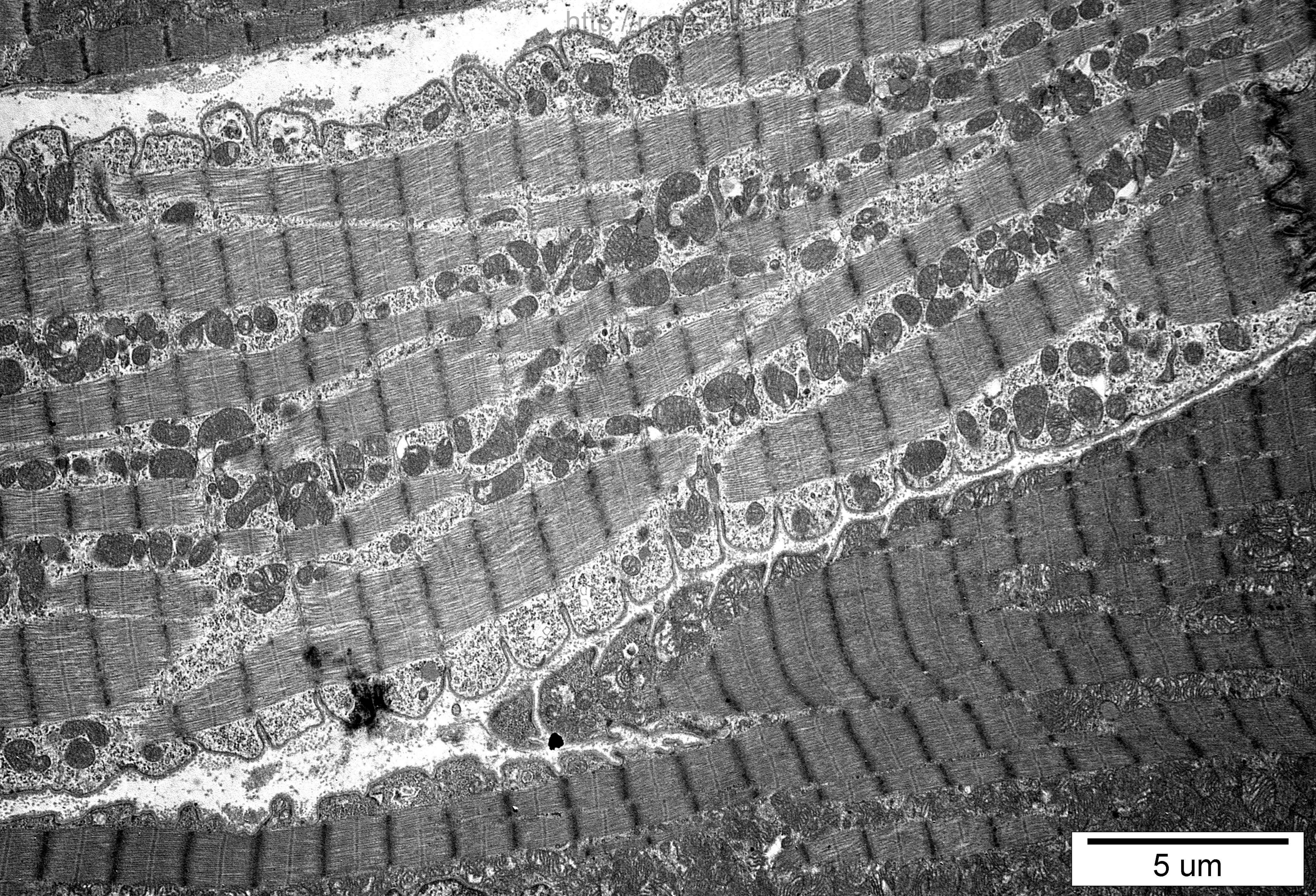
2 um



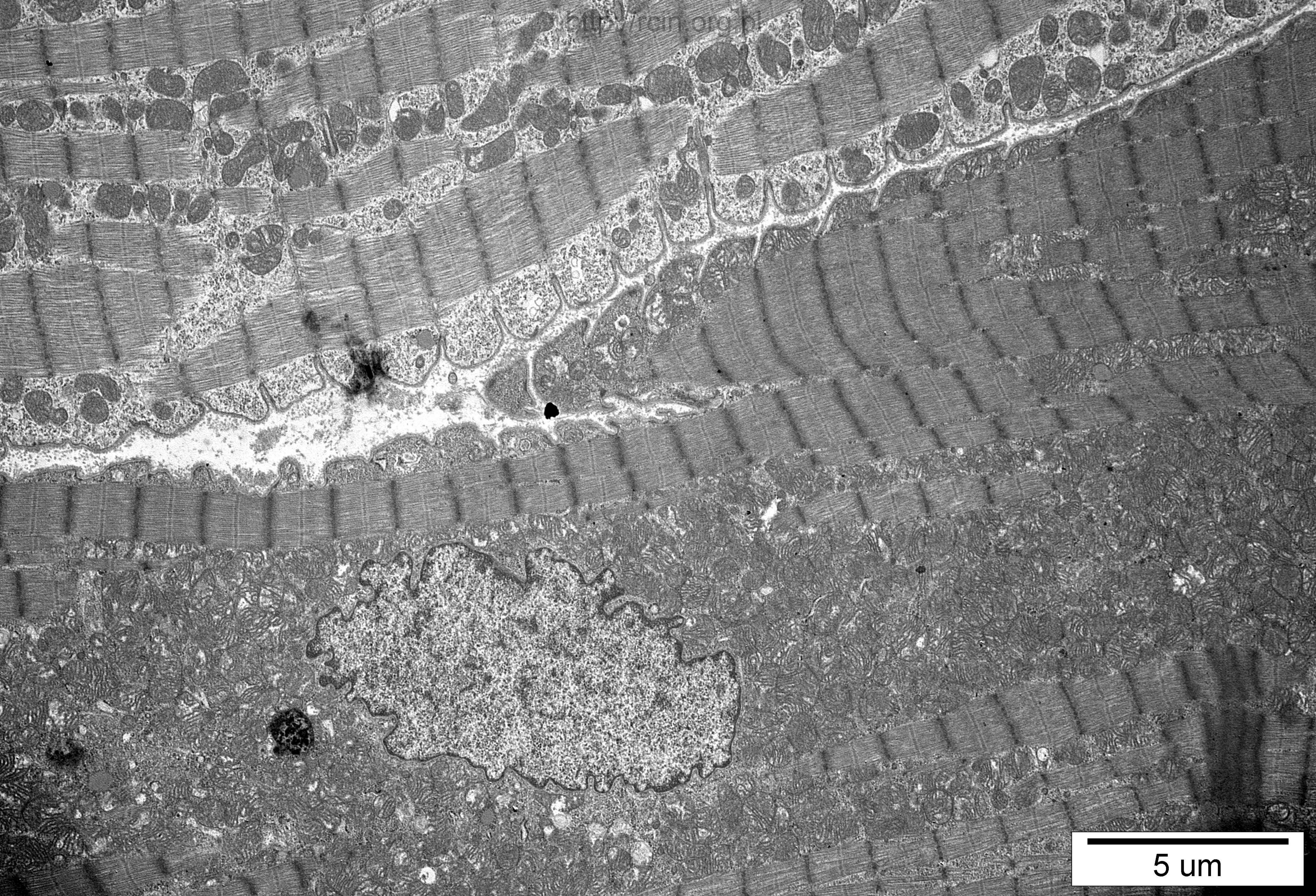
5 um



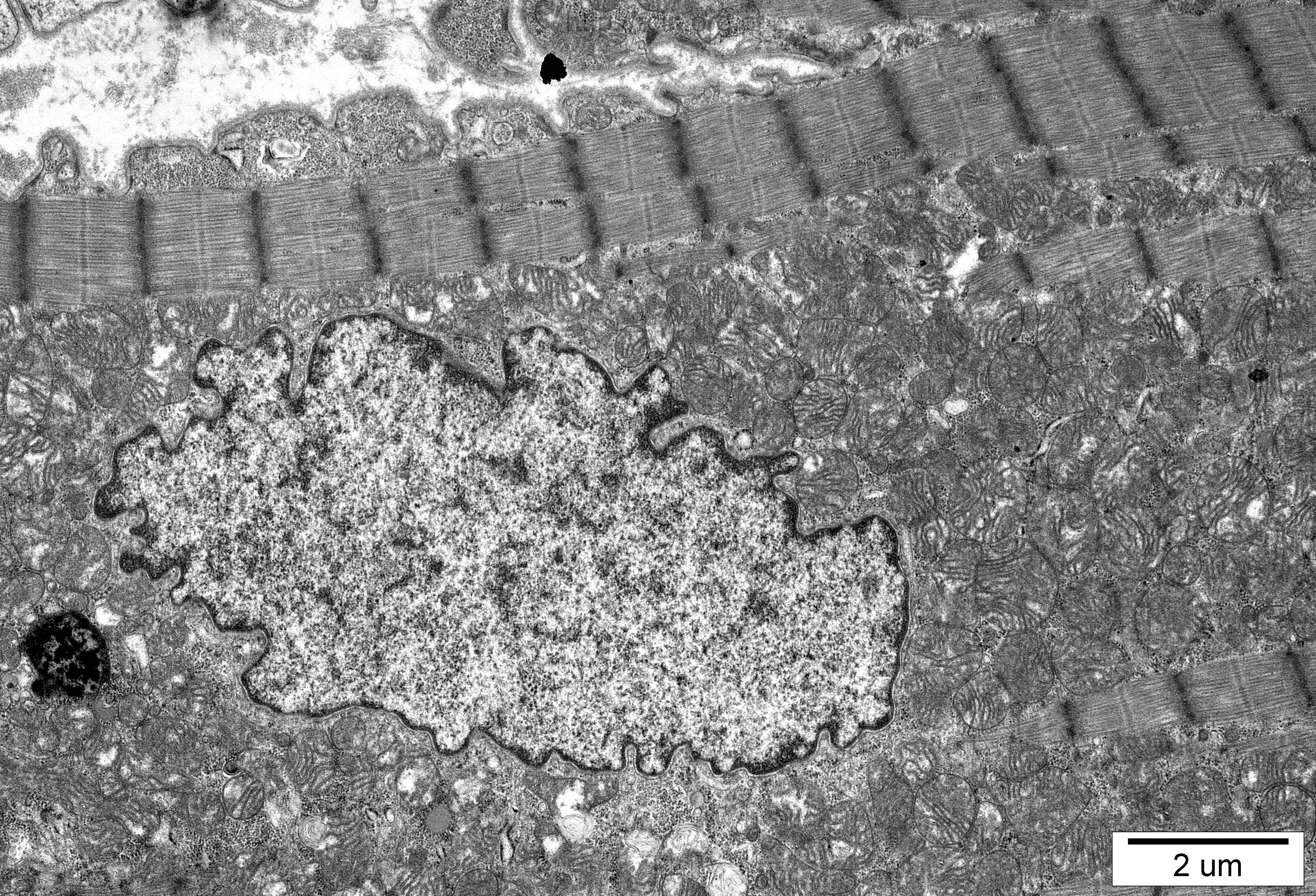
2 um



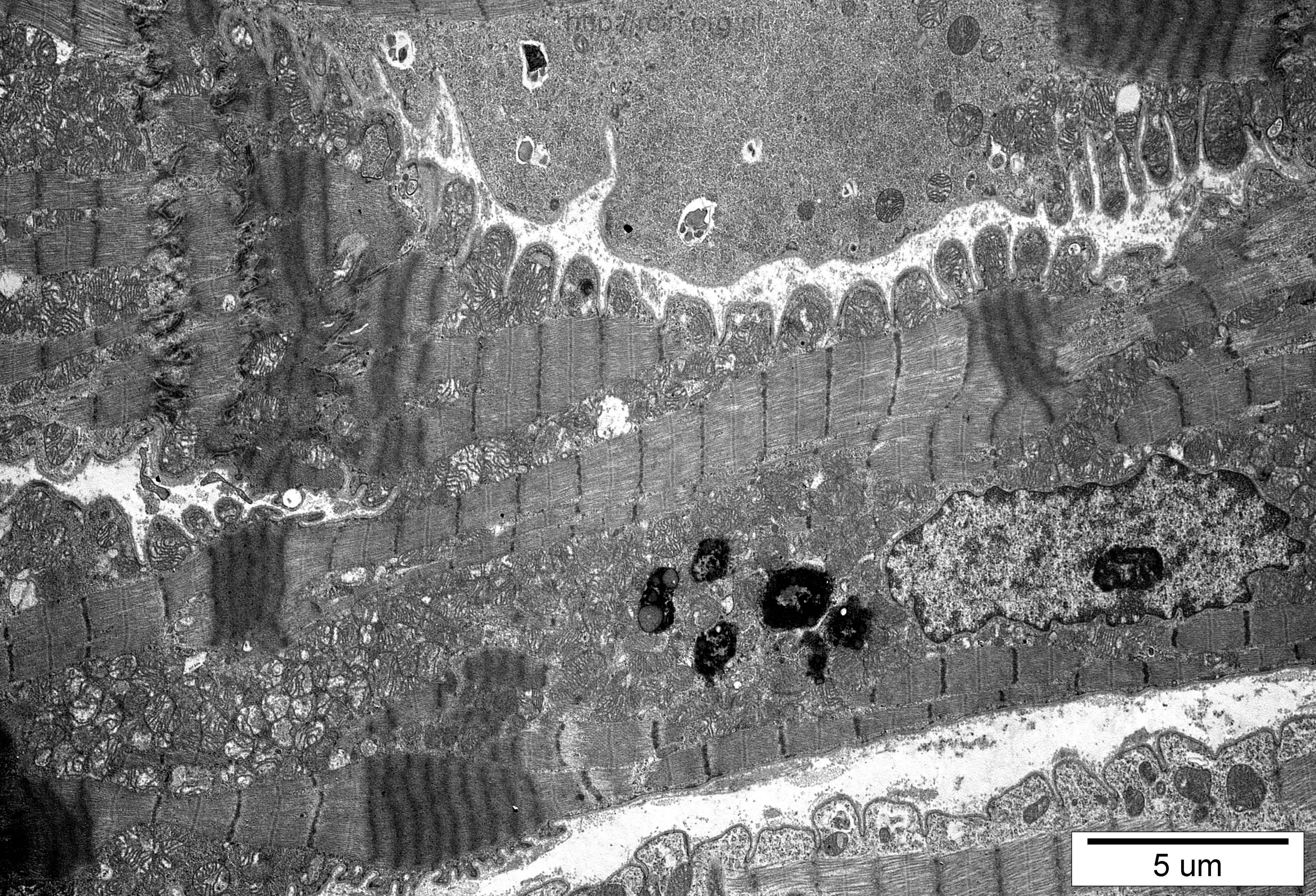
5 um



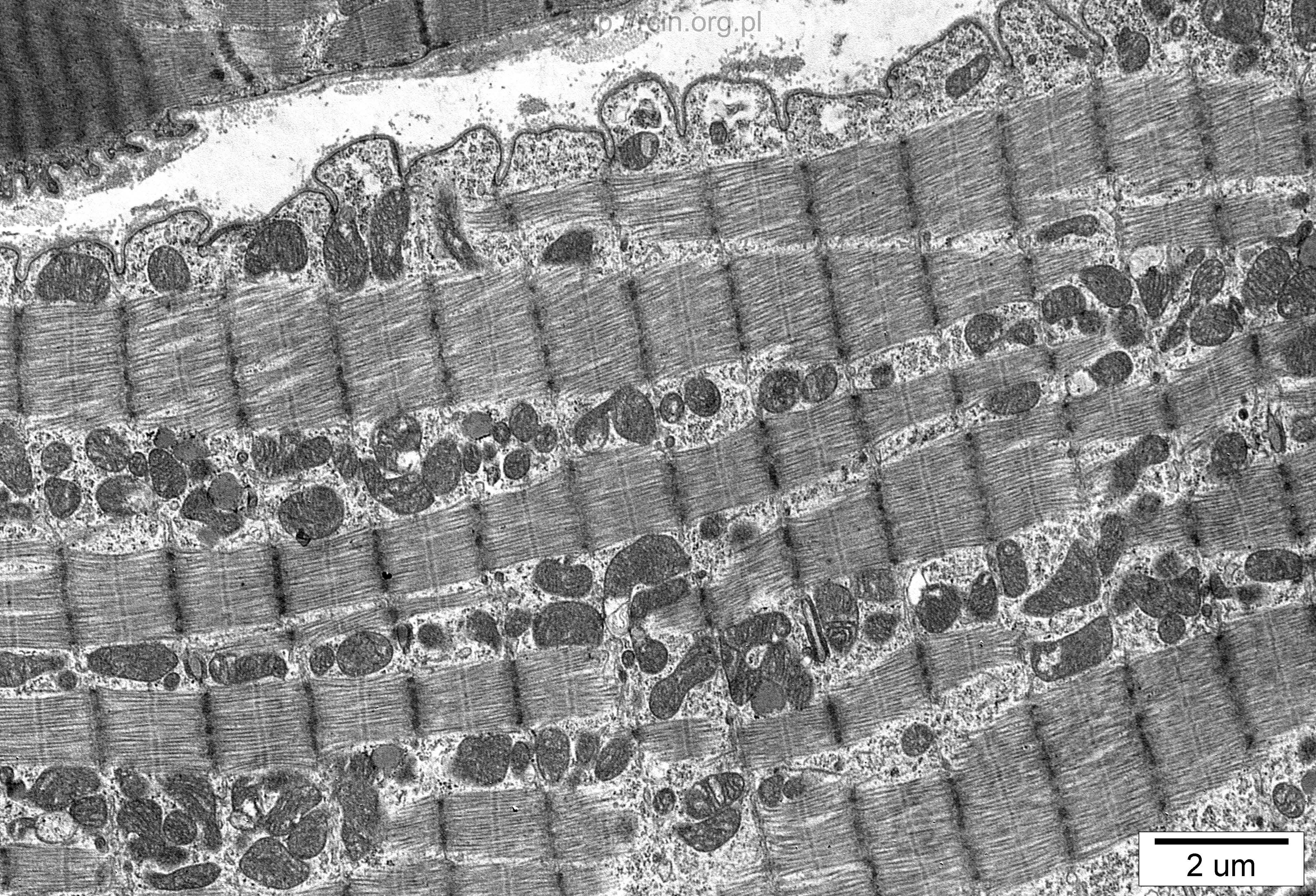
5 um



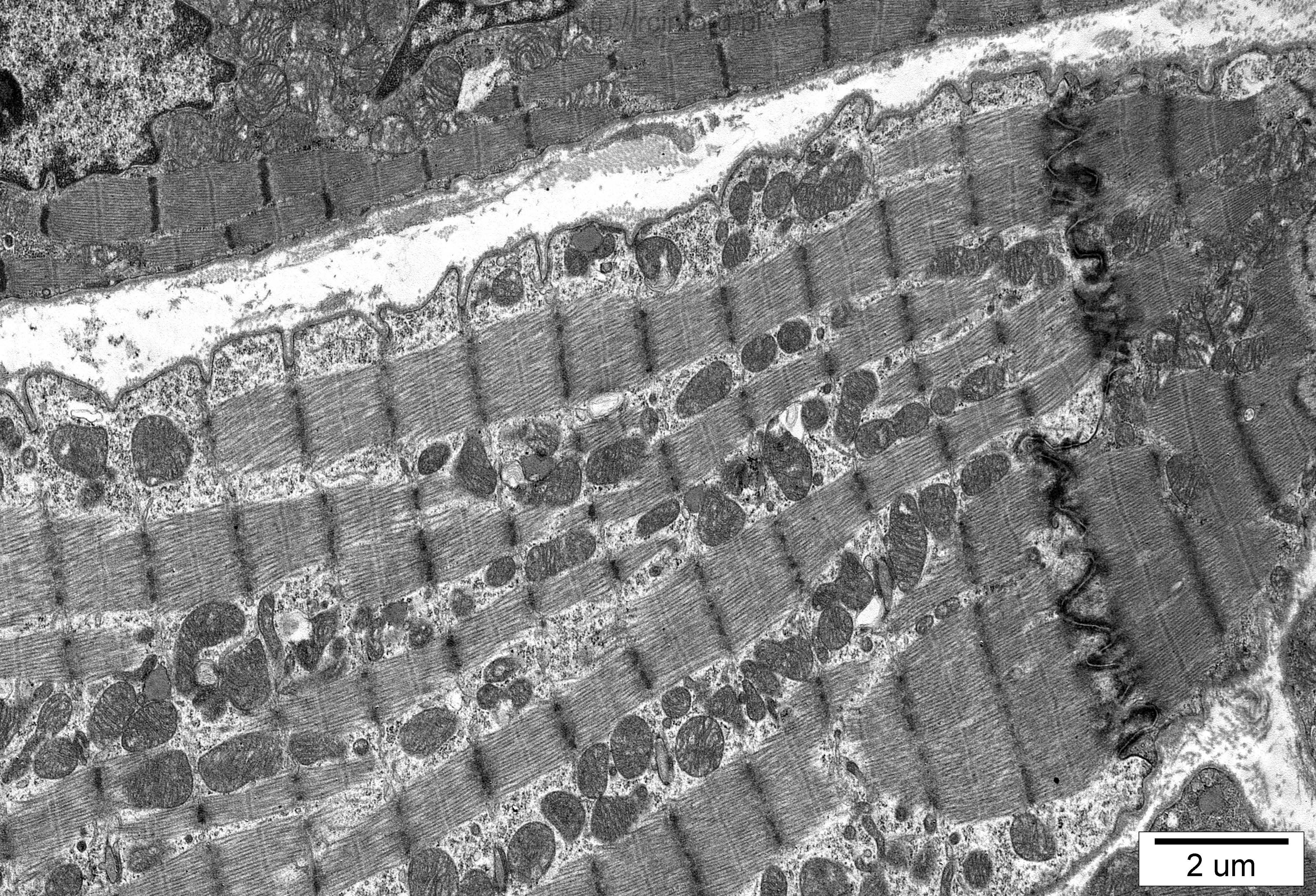
2 um



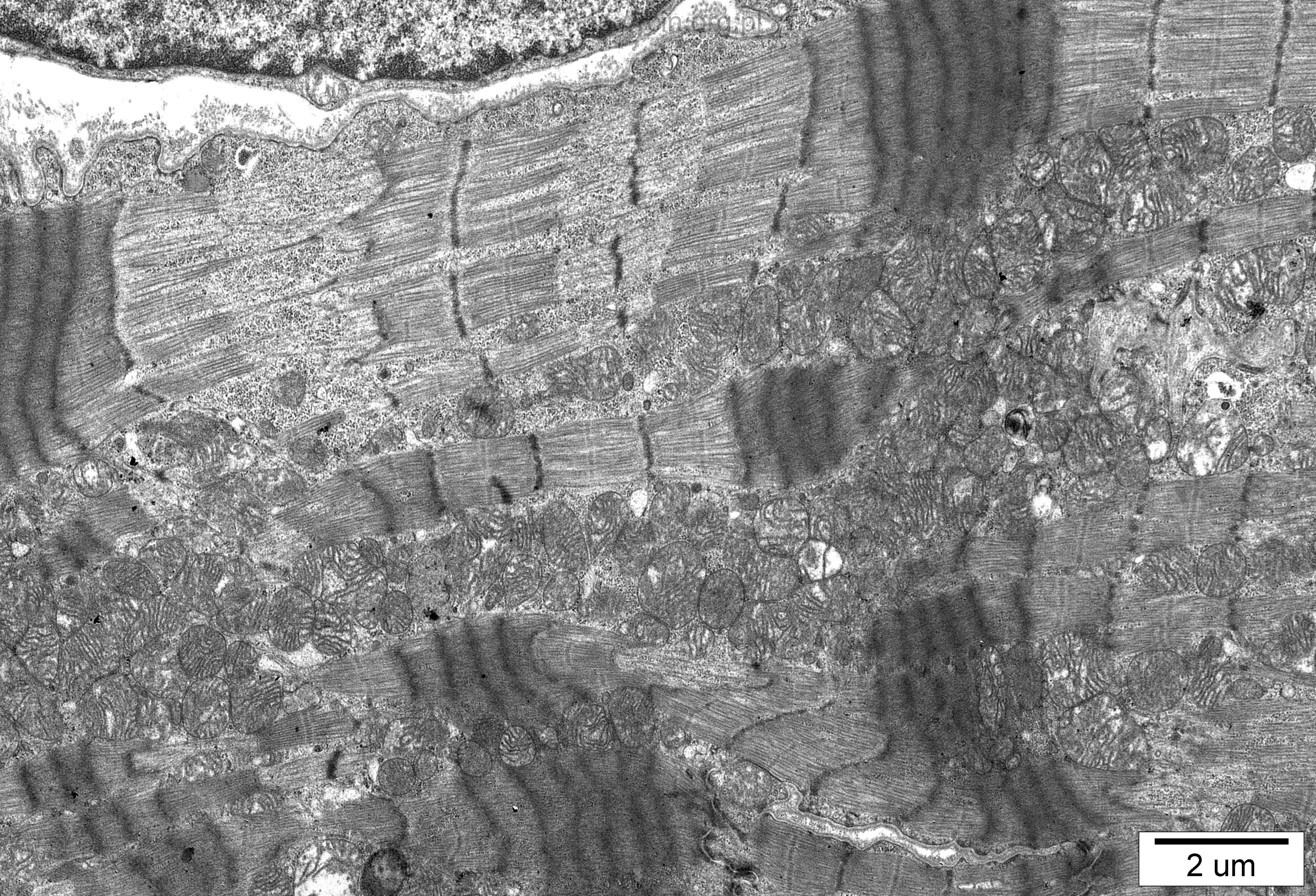
5 um



2 um



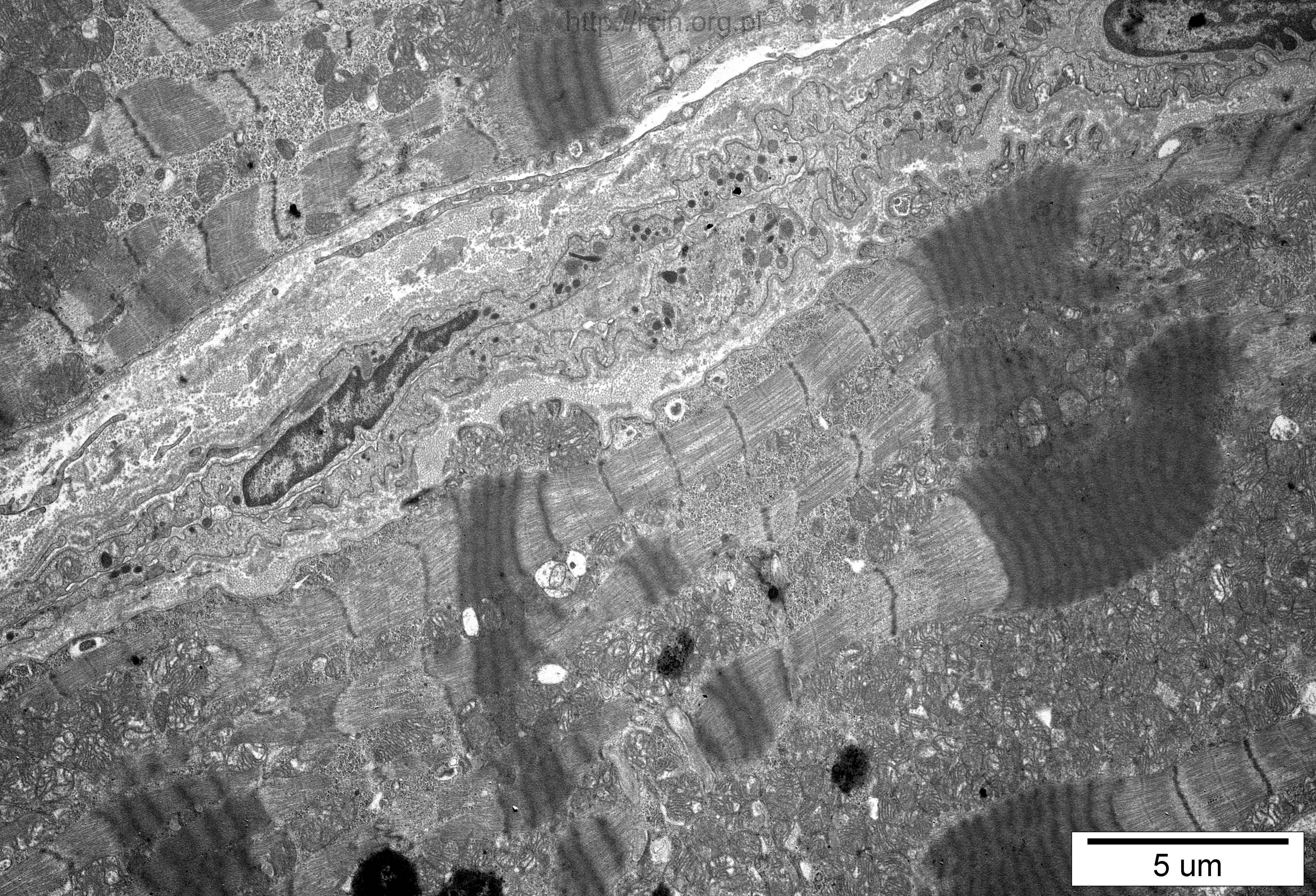
2 um



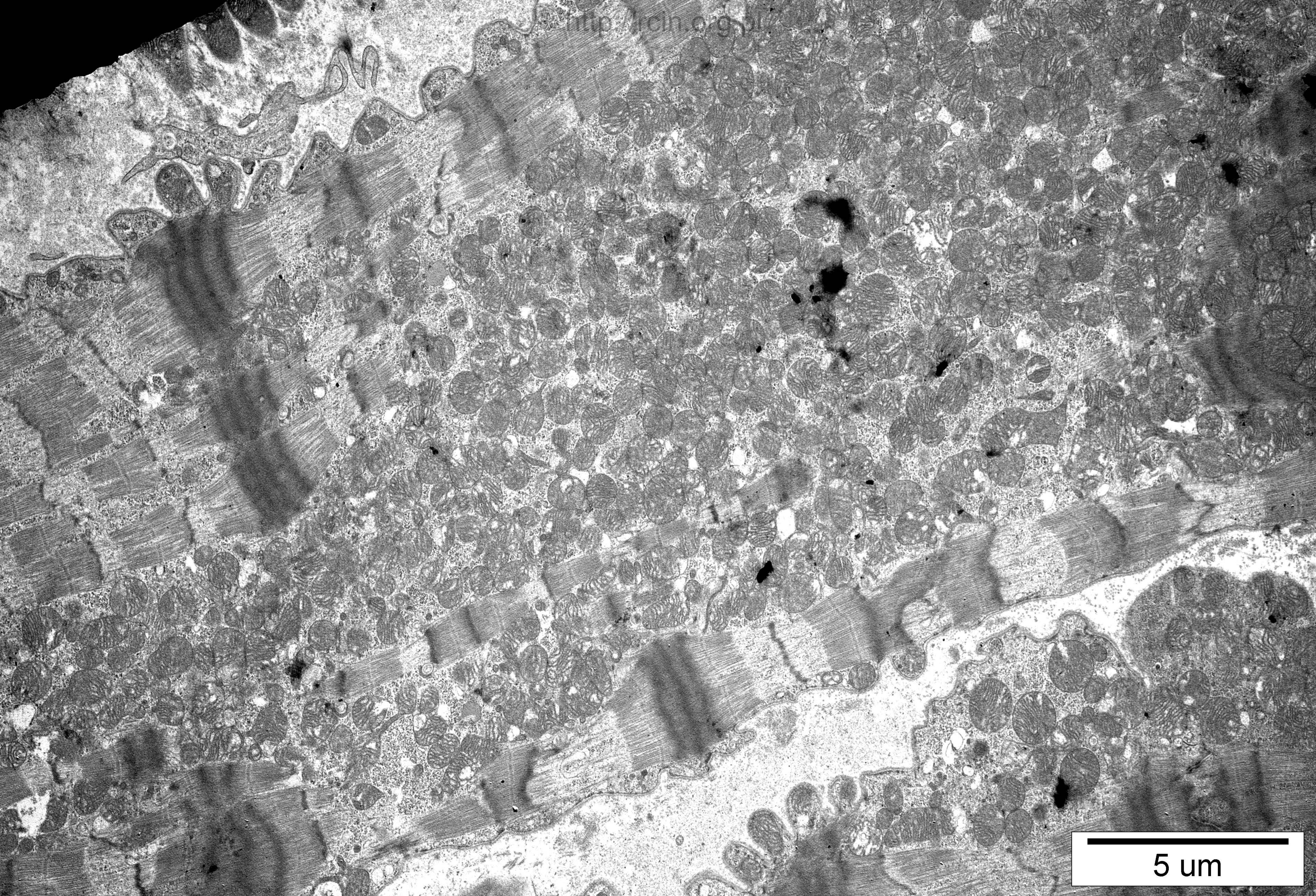
2 um



2 um



5 um



5 um

42-2000

Analiza ultrastrukturalna wykazała cechy miocytolizy o różnym nasileniu w wielu kardiomiocytach (Fig. 1-6, 9, 12, 17, 18). W takich komórkach obecne były zmienione morfologicznie mitochondria (Fig. 8, 9, 10, 11, 13, 14, 15, 16). Jądra kardiomiocytów charakteryzowały się nieregularnym kształtem (Fig. 11).

Ultrastructural analysis revealed features of myocytolysis of varying severity in many cardiomyocytes (Figs. **42-2000**: 1-6, 9, 12, 17, 18). Morphologically altered mitochondria were present in such cells (Figs. 8-11, 13-16). Nuclei of cardiomyocytes were characterized by irregular shape (Fig. 11).