

Procrustomachia

Occasional Papers of the Uncensored Scientists Group

7, 5: 75-79

Milanówek

16 IX 2022

ISSN 2543-7747

***Metataenia quadriplagis* OBB.: (Coleoptera: Buprestidae: Chrysochroina): lectotype designation, redescription and key**

Roman B. HOLYŃSKI

PL-05822 Milanówek, ul. Graniczna 35, skr. poczt. 65, POLAND

e-mail: rbholynski@gmail.com

Introduction

In the course of our cooperation on the planned revision of the genus *Metataenia* THY. my late Colleague and Friend, Ulf NYLANDER, sent me photographs of several specimens, including some types, borrowed by him from the Humboldt Universität in Berlin – among others one [Fig. 1] labelled as syntype of *Paracupta quadriplagis* OBENBERGER, 1928. My own collection contained two *ex.* (RBH: BPepn, BPepo) identified by me, based on perfect agreement with the original description (OBENBERGER 1928), as *Metataenia* (*s.str.*) *quadriplagis* (OBB.), but clearly different in colour (and some other minor details of morphology) from what could be seen from the photographs. Well, the photos were of rather poor quality, and colouration is especially sensitive to photographic artifacts, but here the difference seemed too great and of the type (relatively light bronzed instead of deep black) never observed in any other of His many photographs seen by me! So, are my specimens taxonomically identical with that in HUB? And if they are distinct, which of them represents the true *Metataenia* (*s.str.*) *quadriplagis* (OBB.)? At the first glance, the answer to the second question seems obvious: of course, the [syn-]type is a name-bearer, my specimens are not. But in fact it is not always so simple: there are at least two possibilities potentially invalidating the alleged syntype: *a*) the author of the name could have *erroneously merged into* the type-series specimens of *different* taxa; *b*) a specimen *not belonging* to the type-series could have been *erroneously labelled as* a syntype. The colouration (and, to some degree, sculpture) of the photographed specimen apparently disagreeing with the original description would suggest that one of these situations has indeed occurred, and the labelling (no original

O BENBERGER's label, the identification of the specimen as syntype made by the staff of HUB 79 years after the description!) point to the latter as the more likely "culprit".

O BENBERGER (1928) did not specify the number of specimens making the type-series, but they were evidently more than one, divided between two collections [*die Originalexemplare befinden sich in coll. G. Hauser und in meiner Sammlung*"]. As that in HUB originated evidently from HAUSER, the other[-s] should be looked for in the O BENBERGER's collection in Prague. So, I asked the curator of the **Buprestidae** in EONMP, Lukáš SEKERKA, for the information as to whether any *Paracupta quadriplagis* O BENBERGER can indeed be found there, and he found and sent me for examination two specimens, one of which [Fig. 2] labelled by O BENBERGER as type and being evidently the one mentioned by him as deposited "*in meiner Sammlung*". Its morphology perfectly agrees with my specimens and, more important, with the original description, and the labelling leaves no serious doubt as to its belonging to the type-series, so – to avoid any further confusion – I am hereby using the opportunity to designate it as the lectotype, providing also a redescription and abbreviated key to the identification of this poorly known species.

Conventions

Like in my other publications (unless "corrected" by editors...), I follow the very useful conventions of applying (of course, except wordly citations, where the original form must be retained) SMALL CAPS to *all* [irrespective of context and full vs. abbreviated version: inconsistent use deprives the display of any sense!] personal FAMILY- (*not* given-) names, *italicizing* species- and genus-group names (as well as citations and words in languages different from that of the main text), and writing the suprageneric taxon-names in **Bold** [the latter is not a generally accepted custom, but is often important, as some of such names (*e.g.* of the subtribes **Buprestina** LEACH, **Melobasina** BÍLY or **Coraebina** BED.) are (or may easily become) "homonymous" (but valid!) with [sub-]generic ones (*Buprestina* OBB., *Melobasina* KERR., *Coraebina* KERR.)]

Labels of type-specimens are quoted as exactly as possible, including *italics* and *handwriting* (both represented in my text by *italics*), CAPITAL LETTERS, SMALLCAPS, [framing], colour of text and approximate colour of the label. Individual labels are cited in quotation marks "". Determination (white, in the form like "*Metataenia marcsikae* HOL., det. R. HOLYŃSKI" with year of determination written vertically on the left side) and type-designation [red for primary types, *e.g.* "*Metataenia nylanderi* HOLYŃSKI, HOLOTYPE", green for paratypes, *e.g.* "*Metataenia bilyi* HOLYŃSKI, PARATYPE"] labels added by me are not cited.

Collection acronyms:

EONMP = Entomologické Oddelení Národního Musea, Praha, CZECHIA
HUB = Humboldt Universität, Berlin, GERMANY
RBH = Roman B. HOLYŃSKI, Milanówek, POLAND

For explanation of other terms, abbreviations &c. please – if needed – consult HOLYŃSKI (2022).

BUPRESTIDAE LEACH
BUPRESTINAE LEACH
BUPRESTINI LEACH
CHRYSOCHROINA CAST.
***Metataenia* THY.**
***Metataenia* THY. s.str.**
Metataenia THÉRY 1923: 216

[type-species: *Metataenia meeki* THÉRY 1923 (= *Paracupta meecki* KERREMANS 1919)]

Remarks: *Metataenia* THY. s.str. is a small group of several (mostly unnamed) blackish (with no or but very slight metallic lustre) species, characterized by combination of yellow tarsi (and usually also part – at least extreme tips – of tibiae), sulcate median line of pronotum, elytral dfp markings (if present) rounded, &c. Representatives of this subgenus are known from northern and eastern New Guinea (SE of Humboldt Bay).



Fig. 1

Paracupta quadriplagis OBB. 1928
 PLT? ♀ [HUB] [phot. U.NYLANDER]

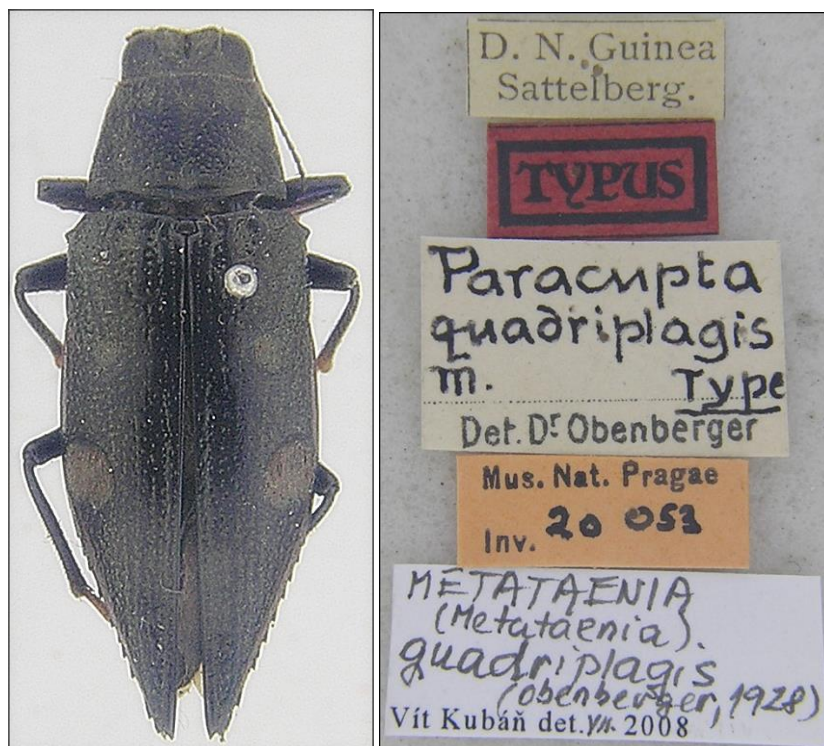


Fig. 2

Paracupta quadriplagis OBB. 1928
 LT ♀ [EONMP]

Abbreviated key to the identification of species of the sg. *Metataenia* THY. s.str.

- 1 (4) Length of body less than 20 mm.
- 2 (3) Pronotal fossae small but deep; only extreme tips of tibiae ferrugineous *M. (s.str.) meecki* (KERR.)
- 3 (2) Fossae not developed; at least tibiofemoral joint areas yellow [*gilvogeniculata* HOSCH. group]
- 4 (1) Body-length definitely above 20 mm.
- 5 (6) Elytral dfp spots prominent *M. (M.) quadriplagis* (OBB.)
- 6 (5) Elytra with no trace of dfp spots *M. (M.) quoqueversa* HOL.

***Metataenia (s.str.) quadriplagis* (OBB.)**

Paracupta quadriplagis OBENBERGER 1928

Material examined:

Lectotype [hereby designated]: “D.N.Guinea, Sattelberg” “*Paracupta quadriplagis* m., *Type*, Det. D^r Obenberger” “**TYPUS**” “Mus. Nat. Pragae, Inv. 20053” “*METATAENIA (Metataenia) quadriplagis* (Obenberger, 1928), Vít Kubáň det. VII 2008” [♀ EONMP]

Additional material: 3 ♀

Lectotype: Female 23×7.5 mm. Dorsal side lustrous (much more so than suggested by [Fig. 2](#)) black with faint bronzy reflexions, ventral with stronger bluish-green hue; epistome and dfp spots on elytra reddish-cupreous; legs purplish-violaceous with yellow tarsi and tips of tibiae (inappreciable on metatibiae); antennal joints 2. and 3. dark ferrugineous, others almost (brownish-)black. Prosternal process covered with very fine, rather long, erect white pilosity, which on metasternum and abdomen becomes shorter, sparser and semirecumbent; otherwise body practically glabrous.

Epistome rather deeply emarginate, epistomal ridge inconspicuous, transversely straight; supraepistomal carina sharp, highly elevated, broken at middle. Front *ca.* as wide as long, sides slightly divergent; frontal depression broad, somewhat elongately ovate, reaching distinctly beyond upper margins of eyes, sparsely shallowly punctured; anterior cavity barely indicated; median stria very deep and coarse; vertex rather coarsely but sparsely punctured, V:H≈0.5. Basal antennal joint club-shaped, slender, *ca.* 3× longer than thick; 2. cylindrical, as wide as long, definitely thinner than 1.; 3. but slightly widened towards apex, there as thick as but *ca.* 4× longer than 2.; 4. elongately triangular, as long as 3. but by half wider apically; 5.-10. progressively shorter and (indistinctly) narrower, 10. slightly longer than wide; 11. 1.5× longer, asymmetrically ovate.

Pronotum transversely trapezoidal (BW:AW:L≈1.6:1.1:1), sides almost straightly convergent, base shallowly bisinuate; basal angles sharply acute; anterolateral angles rather obtuse; collar very short; anterior margin almost imperceptibly bisinuate. Disk rather coarsely and sparsely, towards sides much coarser, denser, irregularly punctured; median sulcus deep, somewhat finer and denser punctulate than rest of disk; fossae barely appreciable, irregular, not dfp; marginal carina reaching only to *ca.* $\frac{1}{3}$ of pronotal length. Scutellum somewhat transversely quadrangular, regularly convex, impunctate.

Elytra markedly caudate, shortly obliquely truncated at humeri, with prominent subhumeral denticle; sides subparallel in basal furth, somewhat divergent to midlength and then sinuately tapering to narrowly acute apices; lateroapical margins sharply and coarsely denticulate. No dfp foveolae at base; small anterior one at middle of elytral width at basal fourth; large posterior at midlength, extending between elytral midwidth and perimarginal

stria; elytra otherwise regularly convex, no trace of costae; puncturation rather sparse and moderately coarse, punctures partly arranged into very irregular rows.

Sulcus of prosternal process densely but not coarsely, proepisterna and rest of undersurface much sparser punctured, dfp areas on abdomen inconspicuous. Basal abdominal segment shallowly sulcate along midline, inconspicuous median depression discernible also on 2. sternite; apex of anal sternite narrowly regularly rounded.

Variability: Insignificant in size (22×7.5-26×8.5 mm.), in details of sculpture and colouration (tibiae usually more extensively yellow, bronzed lustre on pronotum sometimes somewhat stronger, epipleura in one ex. contrastingly purplish); otherwise practically identical.

Geographical distribution: Sattelberg (Huon Peninsula, 6°29'S-147°46'E) is the only known exact locality: other specimens are labelled simply as "New Guinea".

Remarks: Large size and large rounded posterior dfp spot on elytra make the species unmistakable.

Acknowledgements

It is my pleasure and duty to express hereby my heart-felt gratitude to my late Colleague and Friend, Ulf NYLANDER, for the years of close cooperation and, specifically as concerns this paper, for sending me the photos of the HUB syntype [?]. Similar thanks must go to Lukáš SEKERKA, the curator of **Buprestidae** in EONMP (Prague), for the more recently offered help including, in particular, loan of what has become the lectotype of *Paracupta quadriplagis* OBENBERGER, 1928.

Literature:

- HOLYŃSKI R.B. 1997. *Mroczkowskia*-knot and the evolution of the subtribe Chrysochroina (Coleoptera: Buprestidae). *Ann. Zool.* **47**, 1-2: 179-188
- HOLYŃSKI R.B. 2022. Review of the subgenus *Metamroczkowskia* HOL. of *Metataenia* THY. (Coleoptera: Buprestidae) (with remarks on paraphyly). *Procrustomachia* **7**, 3: 43-66
- KERREMANS C. 1919. Descriptions de Buprestides nouveaux. *Ann. Soc. Ent. Belg.* **59**, 3: 41-62
- OBENBERGER J. 1928. Opuscula Buprestologica I. *Arch. Naturg.* **92** [1926], 9-11: 1-350, 353-354
- THÉRY A. 1923. Études sur les Buprestides (troisième partie). *Ann. Soc. Ent. Belg.* **62** [1922]: 193-270

Open access

Edited, published and distributed by:
Informal *Uncensored Scientists Group*
c/o Roman B. HOLYŃSKI

PL-05822 **Milanówek**, ul. Graniczna 35, skr. poczt. 65, **POLAND**
e-mail: rbholynski@gmail.com