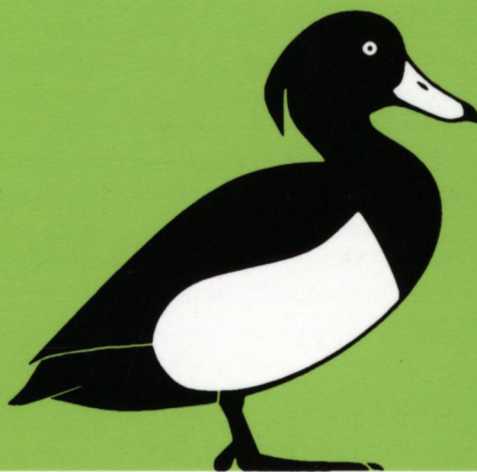


Vol. 38 No 1
Summer 2003

ACTA
ORNITHOLOGICA



**MUSEUM AND INSTITUTE OF ZOOLOGY
POLISH ACADEMY OF SCIENCES • WARSZAWA**

ACTA ORNITHOLOGICA (<http://www.miiz.waw.pl>)

— **Publishes** scientific papers (original research reports, reviews, short notes, etc.) and announcements from all fields of ornithology. It is open for authors from all countries. The language of papers is English (with Polish summary). All manuscripts are peer-reviewed.

— **Founded in 1933** as Acta Ornithologica Musei Zoologici Polonici, since 1953 continued under the present title. Published now in two issues per year.

— **Distributed** in 600-800 copies. Exchanged with over 250 scientific institutions in over 50 countries.

— **Indexed/abstracted** by: Polish Scientific Journal Contents (<http://ciuw.warman.net.pl/alf/psjc>), Biological Abstracts, Zoological Record, Ecological Abstracts, Wildlife Review Abstracts, Ornithologische Schriftensschau, Pascal — Zoologie, Referativnyi Zhurnal.

PUBLISHER and © copyright

Museum & Institute of Zoology [Muzeum i Instytut Zoologii PAN]

Wilcza 64, PL-00-679 Warszawa, POLAND, e-mail: actaorn@miiz.waw.pl

tel. (48 22) 6293221, tel./fax -6296302

Bank account: PBK SA, XIII O/Warszawa, no 11101053-401050001016

EDITORS (address — see Publisher):

Maciej LUNIAK — Editor-in-chief

Tomasz D. MAZGAJSKI — Associate Editor

Wiesław NOWICKI, Łukasz REJT — Assistant Editors

Editorial Advisory Board

Jerzy BAŃBURA — University of Łódź, POLAND

Joerg BOEHNER — Technical University of Berlin, GERMANY

Dario CAPIZZI — University of Pisa, ITALY

Krzysztof DMOWSKI — University of Warsaw, POLAND

Andrzej ELŻANOWSKI — University of Wrocław, POLAND

Marcel M. LAMBRECHTS — Centre d'Ecologie Fonctionnelle et Evolutive, CNRS,
Montpellier, FRANCE

Nicolay S. MOROZOV — Institute of Ecology and Evolution, Russian Academy of
Sciences, Moscow, RUSSIA

Peter SENN — Gdańsk, POLAND

Wiesław WALANKIEWICZ — University of Podlasie, Siedlce, POLAND

Tomasz WESOŁOWSKI — University of Wrocław, POLAND

Cover design by Jerzy DESSELBERGER

Birds' drawings by Tomasz COFTA

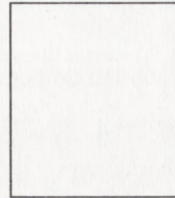
INSTRUCTIONS TO AUTHORS — see the last page.

SUBSCRIPTION and orders for back issues see the form enclosed beside the last page.

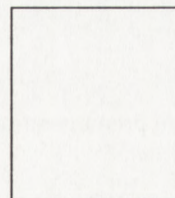
[Prenumerata i zamówienia egz. archiwalnych patrz wszrywka przy ostatniej stronie]

ISSN 0001-6454

Printed in Poland



ACTA ORNITHOLOGICA
Museum & Institute of Zoology
Wilcza 64
PL-00-679 Warszawa
POLAND



ACTA ORNITHOLOGICA
Muzeum i Instytut Zoologii PAN
ul. Wilcza 64
00-679 Warszawa

SUBSCRIPTION

Orders and information: Museum & Institute of Zoology in Warsaw (see Publisher and address overleaf).

Bank account: PBK SA, XIII O/Warszawa, no 11101053-401050001016

Prices (in 2003) include surface mail postage, for air mail add extra EU 5 (USD 4) per issue:

Individual - EU 35 (USD 30) per year (two issues), institutional - EU 75 (USD 65). Back and archival issues at discount prices.

Payment: by cheque, money order or by credit card. New subscribers and persons/institutions sending orders will receive an invoice.

Please fill in an order card below and mail it to the address overleaf

✂

ORDER FORM

Enter my subscription of ACTA ORNITHOLOGICA beginning with volume:

- 37 (2002) - 38 (2003) - 39 (2004)

Send me back issues

Name/institution

Address

..... e-mail

I enclose a [cheque] [money order] for (currency, amount)

Charge my credit card: Visa MasterCard Eurocard AmericanExpress JCB

Card no Expiry date

Send me: an invoice a bill

Date

Signature

PRENUMERATA, ZESZYTY ARCHIWALNE

Zamówienia i informacje: Muzeum i Instytut Zoologii PAN (adres na odwrocie formularza „Zamówienia”) tel. 22 6293221, tel./fax -6296302, e-mail: actaorn@miiz.waw.pl

Konto: PBK SA, XIII O/Warszawa, nr 11101053-401050001016

Koszt prenumeraty (ceny 2003 r.) - 40 zł rocznie (2 zeszyty), obejmuje wysyłkę krajową i jest niższy o marżę handlową naliczaną przez innych dystrybutorów. Zeszyty archiwalne - po obniżonej cenie.

Płatność: na w.w. konto Muzeum i Instytutu Zoologii PAN lub przekazem otrzymanym w odpowiedzi na zamówienie.

✂

ZAMÓWIENIE

Zamawiam prenumeratę ACTA ORNITHOLOGICA począwszy od tomu:

- 37 (2002) - 38 (2003) - 39 (2004)

Zamawiam zeszyty z roczników archiwalnych:

Imię i nazwisko/ instytucja

Adres

..... e-mail

Data

Podpis

<http://rcin.org.pl>

INSTRUCTIONS TO AUTHORS

[Redakcja na życzenie wysyła polską wersję instrukcji]

ACTA ORNITHOLOGICA publishes papers – original research reports, reviews, short notes, etc. – that have not been published or submitted elsewhere. Prior to acceptance for publication, all typescripts submitted will be scrutinised by competent, usually anonymous, reviewers. All papers submitted to ACTA ORNITHOLOGICA should be written in good English; if need be, the text should be edited by a competent native speaker of English before submission. Three (3) hard copies of the complete typescript should be sent to the Editor.

1. **The typescript** should be double-spaced. No right justification, no paragraph indents, no underlining or any highlighting (e.g. bold, different-sized font) should be used, with the possible exception of data in tables. Headings should not be centred, nor should they end with a full stop. The English names of bird species should begin with capital letters. Their Latin names should also be given with the first usage in the text. The Latin names of genera and species should be in *italics* (but not in parentheses), higher taxa in normal font. Words at the end of lines should not be divided. Footnotes may be used only on the first page.

2. **The title page** should be arranged in the sequence: 1) title, 2) author's full given names and family name, 3) author's (authors') address(es), 4) abstract, 5) key words, 6) suggested running title.

3. **The title** of the paper should be as brief as possible and provide general information (e.g. the problem or subject studied) and particular identification (e.g. place, habitat, years).

4. **In the postal address**, the institutional affiliation of the author(s) and the name(s) of the country(ies) should be in English. The e-mail address is recommended.

5. **The abstract** (up to 200 words) should not repeat information from the title. It should be a brief statement of the methods applied and the main results, rather than a list of the paper's contents. It should be complete in itself without reference to other parts of the paper. Scientific (Latin) names (not the English names) should be used if they have not already been given in the title.

6. **The text** should be concise and formulated in short sentences. It should not repeat data presented in tables and illustrations. The results of the work, and the way in which they were obtained, should be described in **the past tense**, but regular or permanent situations (e.g. geographical location, general habits of the species) should be in **the present tense**. Avoid "empty" phrases, like "it should be noted that...", "it is interesting that...". Do not use long sentences in parentheses: use commas or semicolons instead.

7. **Dates and numbers**: dates should include the month as a word or abbreviation, and the year(s) in full. The components of dates and other numerical expressions should be separated by spaces: e.g. 3 Oct. 1999, 3-5 May 1999, 1990-1999, 3 p/10 ha, pp. 3-10, 10 km, $N = 2 + 5$, $x = 7 \pm 0.1$. Decimal fractions should be written with the decimal point, not a comma.

8. **Citations** of bibliography should be made with the author and year system. Examples: one author – reported by Taczanowski (1882), (Taczanowski 1882); two authors – according to Dyrz & Wink (1999), (Dyrz & Wink 1999); more than two authors – the figures given by Dyrz et al. (1984), (Dyrz et al. 1984). Multiple references should be given in chronological order of authors according to the years of their first publications cited. e.g. (Rydzewski 1935, 1979a, 1979b; Czarnecki 1954, 1979). Papers "in press" may be cited and listed in the References section only if they have been formally accepted for print. Personal communications, works in preparation and unpublished data should be cited in the text with the author's initials (e.g. inf. J. Kowalski, J. Kowalski – unpubl. data). M.Sc. and Ph.D. theses may be cited in the References section. Tables and figures should be cited in the text with Arabic numerals, e.g. Table 3, Tables 1 and 3, Fig. 3.

9. Tables and figures should be kept as straightforward as possible and should be understandable without reference to the text. The same data should not be presented in both tables and illustrations, nor should either of these repeat information given in the text. Taxa listed in tables should be identified by their Latin names only. Captions and headings should be as short as possible, without footnotes. Figures and legends within larger figures should not be framed. Comments and information concerning methods should be in the body of the text, not in figure captions or table headings. **Tables should be printed without vertical lines.** Each table (with its heading and explanations) should be printed on a separate sheet, and all figure captions should be printed together on a separate sheet. For preference, figures should be produced using computer graphics. If they are to be scanned, they must be of an appropriate quality, i.e. drawings should display contrasts, the lettering and other details must be large enough to remain legible after reduction in printing. Illustrations in colour, for which a charge is made, require the Editor's individual consent. The author is obliged to supply copyright permission for tables or illustrations published elsewhere if they are to be reproduced in the same or similar form.

10. References cited in the text (see "Citations") should be listed (no indents and no right side justification) in alphabetical order according to the patterns below. Titles of journals should be abbreviated as in the World List of Scientific Periodicals, or full names should be used.

Journals: Dyrz A., Tomiałojć L. 1974. Application of the mapping method in the marshland habitats. *Acta Ornithol.* 14: 348-353.

Books: Cramp S., Simmons K. E. K. (eds.) 1983. *The birds of the Western Palearctic. Vol. II.*, Oxford Univ. Press., Oxford.

Chapters: Pinowski J., Zajac R. 1990. Damages to crops caused by birds in Central Europe. In: Pinowski J., Summers-Smith J. D. (eds.). *Granivorous birds in the agricultural landscape.* PWN, Warszawa, pp. 333-347.

Titles of works originally published in languages other than English, French or German (e.g. Polish, Russian, Spanish) should be given only in the English translation [in square brackets]. References written in a non-Latin script (e.g. Cyrillic) should be transcribed according to the international rules (ISO). The author is responsible for the accuracy of the references cited.

11. The summary will be translated from English into Polish by the Editor. It should be no longer than 2 pages and should refer to the tables, figures and, if necessary, the bibliography in the "References".

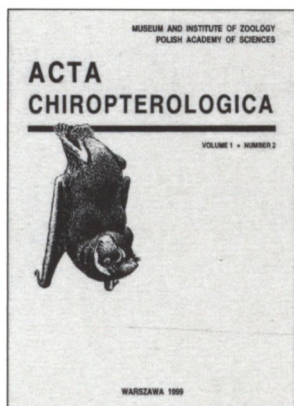
12. A computer record (IBM compatible format) of the typescript should be submitted, together with one complete printed copy, when the final version of the paper is accepted for publication, i.e. following corrections recommended by reviewers and the Editor. Word for Windows, Excel and Corel Draw are recommended. Graphic files should include the original data in ASCII format.

13. The galley proof will be sent to the corresponding author, who should return the revised version to the Editor as soon as possible by fax or e-mail.

14. Reprints. The corresponding author will receive 25 copies of the paper free of charge. Orders for further copies – charged at current prices – should be sent to the Editor with the revised galley proof.

15. Copyright. Acceptance of the typescript for publication means that the right to publish the whole paper or any substantial part of it is transferred to the Publisher. This applies to all media.

Other journals published by the Museum and Institute of Zoology,
Polish Academy of Sciences, Wilcza 64, 00-679 Warszawa, Poland
Tel.: (048) 22 629 3221, Fax: (048) 22 629 6302,
<http://www.miiz.waw.pl/periodic>

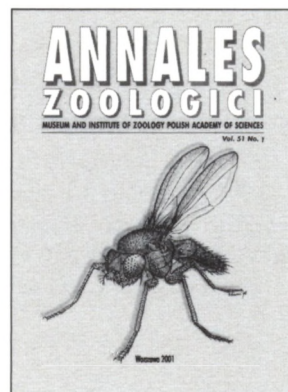


Acta Chiropterologica the only journal of bat research (ISSN 1508-1109) indexed by the Institute for Scientific Information, Philadelphia, USA. Publishes in English, twice a year. Containing reviews, full-length papers, short notes, opinions, technical comments, book reviews, short announcements, and advertisements. All manuscripts are peer-reviewed. Listed/abstracted in: Current Contents (Agric. Biol. & Environm. Sci.), Elsevier GEO Abstracts, Pascal, Polish Scientific Journals Contents (Agric. & Biol. Sci.), Referativnyi Zhurnal, Research Alert, Science Citation Index Expanded, Wildlife Review Abstracts, and Zoological Record. Annual subscription: institutional: USD 60, personal: USD 40.

E-mail: Acta.Chiropterologica@miiz.waw.pl

Annales Zoologici (ISSN 0003-4551) is published quarterly. It is an international journal devoted to all aspects of systematic zoology (in broad sense). All manuscripts are peer-reviewed. International editorial board. Listed/abstracted in: SciSearch® (Science Citation Index-Expanded), ISI Alerting Services (includes Research Alert®), and Current Contents®/Agriculture, Biology and Environmental Sciences; Entomological Abstracts and Zoological Record. Annual subscription: institutional: Europe USD 200, other countries USD 250; personal: Europe USD 100, other countries USD 125.

E-mail: darek@miiz.waw.pl



An International Journal of Faunology. Issued since 1930, now as a semi-annual. Publishes the results of original studies, review articles and syntheses devoted to knowing fauna, its differentiation, distribution and transformation. Peer-reviewed. Listed abstracted in: Zoological Record, Biological Abstracts, Biosis, Pascal, Referativnyi Zhurnal and Polish Scientific Journals Contents (Agric. & Biol. Sci.). Annual subscription: institutional: USD 60, personal: USD 40.

E-mail: jolawyt@miiz.waw.pl



The journals are available through the Library of the Museum and Institute of Zoology, PAS, Wilcza 64, 00-679 Warszawa, Poland; E-mail: libr@miiz.waw.pl. Payments by Visa, MasterCard, Eurocard, Diners Club Intl., or American Express; checks payable to >Museum and Institute of Zoology PAS<; bank account PBK SA, XIII o/Warszawa, No. 11101053-401050001016

Acta Ornithologica 38 (1). Summer 2003

Contents [Spis treści]

- Re-use of old nests versus the construction of new ones in the Magpie *Pica pica* in the city of Sofia (Bulgaria) [Porównanie lęgów sroki z zeszłorocznych i z nowych gniazd w Sofii] ANTONOV A., ATANASOVA D. 1
- The effect of trends in ambient temperature on egg volume in the Tree Sparrow *Passer montanus* [Wpływ trendu temperatury na objętość jaj mazurka] BARKOWSKA M., PINOWSKI J., PINOWSKA B. 5
- Movement patterns of adult Laughing Gulls *Larus atricilla* during the nesting season [Przemieszczenia dorosłych mew karaibskich w okresie lęgowym] DOSCH J. J. 15
- Habitat preferences of foraging Rooks *Corvus frugilegus* during the breeding period in the agricultural landscape of eastern Poland [Preferencje żerowiskowe gawrona w okresie lęgowym w krajobrazie rolniczym wschodniej Polski] KASPRZYKOWSKI Z. 27
- Nest tree utilization by the Malabar Grey Hornbill *Ocyrceros griseus* in the semi-evergreen forest of Mudumalai Wildlife Sanctuary (S India) [Wykorzystanie drzew gniazdowych przez toko szarego w rezerwacie Mudumalai (Indie)] ... MAHESWARAN B., BALASUBRAMANIAN P. 33
- Habitat structure and breeding parameters of the White Stork *Ciconia ciconia* in the Kolno Upland (NE Poland) [Struktura środowiskowa terytoriów gniazdowych i parametry rozrodu bociana białego — przykład z Wysoczyzny Kolneńskiej i doliny Biebrzy]. NOWAKOWSKI J. J. 39
- Reactions to human disturbances in an urban population of the Swan Goose *Anser cygnoides* in Heidelberg (SW Germany) [Reakcje stada gęsi łabędzionosych na antropogeniczne bodźce zakłócające w warunkach miejskich Heidelbergu (SW Niemcy)] RANDLER Ch. 47
- A survey of the Bearded Tit *Panurus biarmicus* during the non-breeding season in a landscape of western Poland [Wąsatka w okresie niełęgowym — występowanie w skali wycinka krajobrazu Wielkopolski] SURMACKI A., STĘPNIEWSKI J. 53
- Food of the Red-backed Shrike *Lanius collurio*: a comparison of three methods of diet analysis [Badania składu pokarmu gąsiora: porównanie wyników uzyskanych metodami analizy pierścieni okołoszyjnych, wypluwek i resztek pokarmowych] TRYJANOWSKI P., KARG M. K., KARG J. 59
- Clutch size and breeding performance of Marsh Tits *Parus palustris* in relation to hole size in a primeval forest [Wielkość zniesienia i udatność lęgów sikor ubogich w zależności od rozmiarów dziupli w lesie pierwotnym] WESOŁOWSKI T. 65

SHORT NOTES

- Temperature dependence of the breeding phenology of the Collared Flycatcher *Ficedula albicollis* in the Białowieża Forest (NE Poland) [Zależność między temperaturą a fenologią lęgów muchołówki białoszyjej w Puszczy Białowieskiej] MITRUS C. 73