

Józef RAZOWSKI

MEYRICK Types of *Tortricoidea* (*Lepidoptera*) in the Vienna Museum
Typy opisanych przez MEYRICKA *Tortricoidea* (*Lepidoptera*) w Muzeum
Wiedeńskim

ТИПЫ ОПИСАННЫХ Мейриком (MEYRICK) *Tortricoidea* (*Lepidoptera*) в Естественном Музее в Вене

[With 82 figures in the text]

Dr. F. KASY, the keeper of the Division of Entomology of the Naturhistorisches Museum in Vienna has kindly sent me the types of Exotic *Tortricoidea* (*Tortricidae* and *Cochylidae*) for a study. The majority of the types are those described by E. MEYRICK in the years 1930–1936. The present paper is a list of those species provided with short characteristics and drawings of their genitalia. I do not change any original generic names of listed species, however, most of them are wrong, as for instance the species of *Tortrix* L. or *Eulia* HBN. The majority of the species are the American ones. Dr. N. OBRAZTSOV is working now on the *Tortricidae* of America and therefore I do not intend to make any revision of the systematic positions of the species.

TORTRICIDAE

Amorbia CLEM.

Amorbia elaeopetra MEYRICK, 1932: 263

[Fig. 1]

Type: "Santa Catharina, Jaraguá, Fr. HOFFMANN", G. Sl.: 4302.

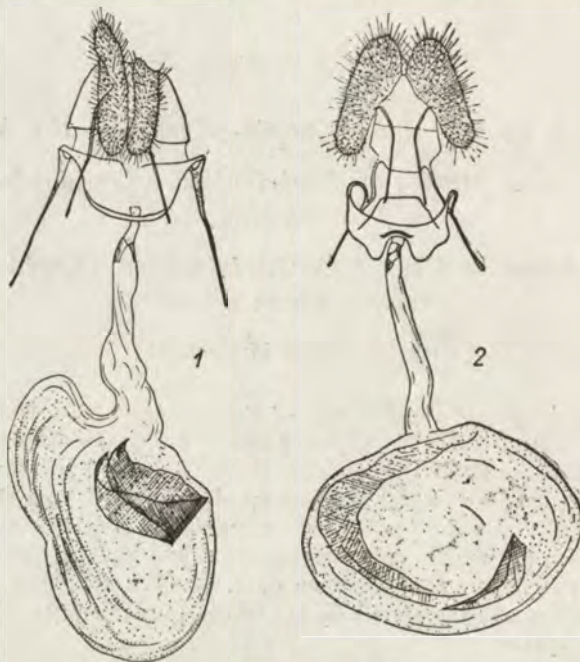
Labia long; lamella genitales broad; gonapophyses long; lamella vaginalis broad, rounded anteriorly; ductus bursae narrow in posterior portion, provided with small strongly sclerotized area; bursa copulatrix large, sculptured; signum very broad, plate-shaped.

Amorbia chlorolyca MEYRICK, 1931: 155

[Fig. 2]

Lectotype: "Espirito Santo Guandú, 1920, Decebr., F. HOFFMANN", G. Sl.: 4309.

Lamella genitalis delicate; gonapophyses rather short; lamella vaginalis strong, provided with large lateral parts, which are strongly protruding anteriorly near middle; ductus bursae narrow, rather long with small strongly sclerotized area near ostium; bursa copulatrix very large, provided with stronger sclerotized areas and sculptures.



Figs. 1-2. Female genitalia: 1 — *Amorbia elaeopetra* MEYR., type; 2 — *A. chlorolyca* MEYR., type.

Amorbia osmotris MEYRICK, 1932: 263

[Figs. 3, 4]

Type: "Costa Rica, Irazu, 2200-2500 m., 21-28. V. 30, REIMOSER", G. Sl.: 4310.

Valva very broad, slightly tapering posteriorly with costa well sclerotized; sacculus long, broad at base, concave in the middle, provided with broad projection before the end ventrally; socii broad, rounded terminally; uncus very slender, rather short; transtilla narrow with slightly broadened and spined

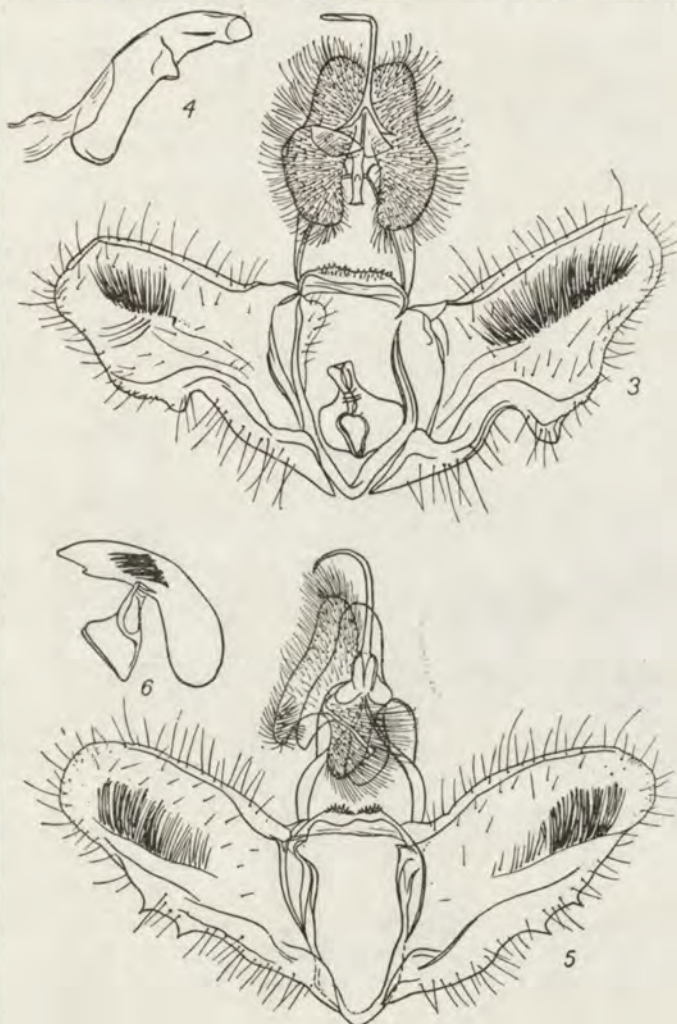
medio-lateral portions; aedeagus strong, tapering posteriorly; no cornuti in examined specimen.

Amorbia rectangularis MEYRICK, 1931: 155

[Figs. 5, 6]

Lectotype: "STIEGLMAYR, Rio Gr. do Sul, Ende August", G. Sl.: 4300.

Valva broad, tapering posteriorly, rounded terminally; sacculus broad, slightly sclerotized in terminal portion, provided with two pointed projections beyond the middle ventrally; tegumen rather well developed; uncus slender,



Figs. 3-6. Male genitalia: 3 - *Amorbia osmotris* MEYR., type; 4 - aedeagus of same specimen; 5 - *A. rectangularis* MEYR., lectotype; 6 - aedeagus of same specimen.

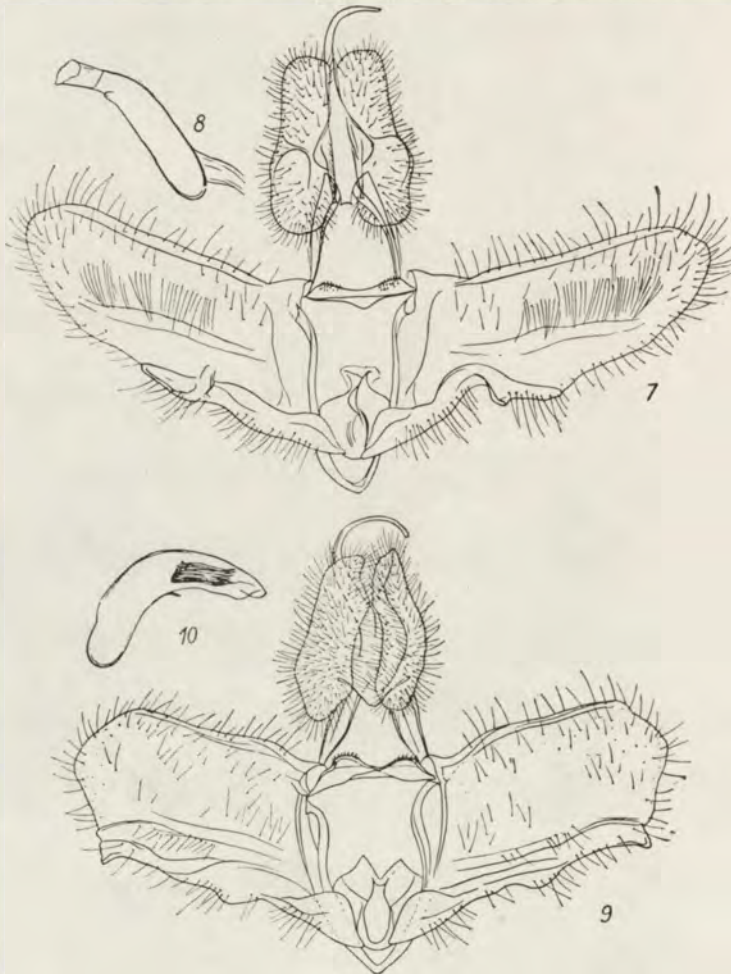
pointed; socii very large, projected laterally and rounded ventrally; transtilla with well developed spined, lateral portions; aedeagus broad at base, pointed terminally; cornuti rather short.

Amorbia spilocryptis MEYRICK, 1932: 262

[Figs. 7, 8]

Type: "Ost Bolivia, Rio Songo, 750 m.", G. Sl. : 4311.

Valva elongate, broad at base, rounded terminally; sacculus rather short, strongly sclerotized, reaching the middle of the ventral edge of valva, provided with delicate ventral projection before the end; tegumen delicate; uncus rather



Figs. 7-10. Male genitalia: 7 - *Amorbia spilocryptis* MEYR., type; 8 - aedeagus of same specimen; 9 - *Cacoecia aequiflexa* MEYR., lectotype; 10 - aedeagus of same specimen.

short; socii broad, rounded ventrally and terminally; aedeagus slender, pointed terminally; no cornuti in examined specimen.

Cacoecia HBN.

Cacoecia aequiflexa MEYRICK, 1931: 149

[Figs. 9, 10]

Lectotype: "Espirito Santo Guandú, 1921, F. HOFFMANN", G. Sl.: 4349.

Valva very broad with costa well developed; sacculus strong, reaching the end of the ventral edge of valva, broad at base, delicately convex near middle ventrally, provided with short ventro-terminal projection; tegumen rather weak; uncus long; socii broad; transtilla with two lateral large, spined projections; aedeagus broad, strongly curved, tapering terminad; numerous rather short cornuti in vesica present [figs. 9, 10].

This species belongs in the *Sparganothinae* as its habitus and male genitalia show.

Cacoecia biforata MEYRICK, 1930 b: 224

[Fig. 11]

Type: "Serra do Itatiaya, Südabhg., Waldreg., 16-26. X. 27, ZERNY" G. Sl.: 4353.

Labia broad; gonapophyses posteriores longer than gonapophyses anteriores; lamella vaginalis complicate, broad with short lateral terminations and rather straight anterior edge; two large, rounded and minutely spined areas in the ostium-area present; ductus bursae short, narrowing posteriorly, broad beyond bursa; bursa copulatrix large, provided with strong signum.

Cacoecia clivigera MEYRICK, 1932: 253

[Fig. 12]

Type: "S. Peru ob., Madre de Dios, 1000 m.", G. Sl.: 4354.

Labia broad, elongate-ovate; lamella genitalis large; gonapophyses long; lamella vaginalis broad subtrapeze, provided with short, pointed projections in ventro-lateral corners; ostium broad, minutely spined; ductus bursae of rather constant width throughout; bursa copulatrix very large, rounded; signum small, provided with delicate basal plate.

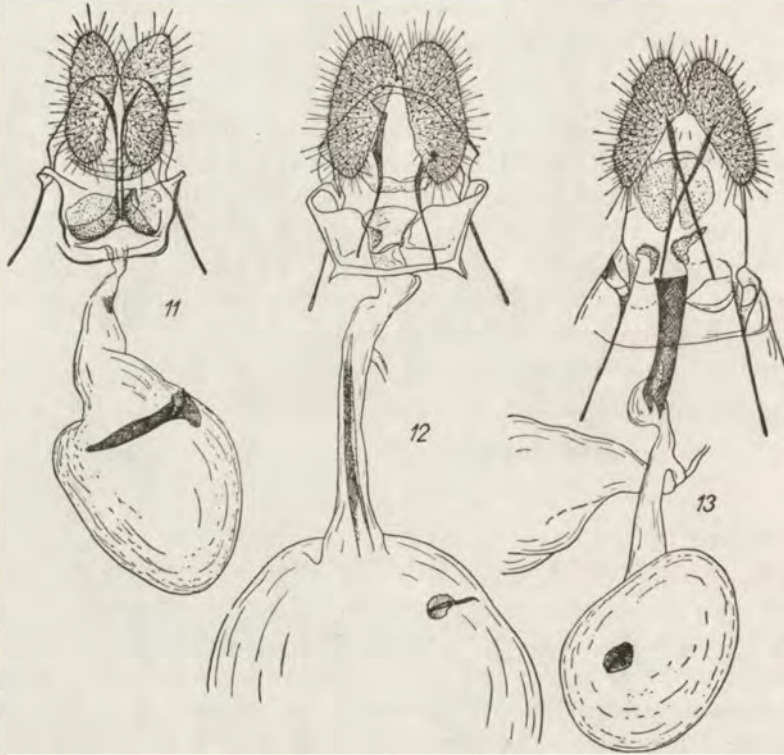
Cacoecia labyrinthopa MEYRICK, 1932: 253

[Fig. 13]

Type: "Santa Catharina, Neu Bremen, 8. I. 31, Fr. HOFFMANN", G. Sl.: 4352.

Labia rather small; gonapophyses long; lamella vaginalis broad, provided with rather small minutely spined plates near ostium; posterior portion of

ductus bursae strongly sclerotized, long; anterior portion weakly sclerotized; bursa copulatrix rather small, rounded; signum small in a shape of a plate provided with median strip.



Figs. 11–13. Female genitalia: 11 — *Cacoecia biforata* MEYR., type; 12 — *C. clivigera* MEYR., type; 13 — *C. labyrinthopa* MEYR., type.

Capua STEPH.

Capua crocograptia MEYRICK, 1933: 422

Lectotype: "SIKORA, Madagasc.", G. Sl.: 2246 (DIAKONOFF).

The redescription of this species was given by A. DIAKONOFF (1959: 409). The lectotype was designated in same paper, however, the author marked it as „monotype”.

Capua leptophracta MEYRICK, 1931: 147

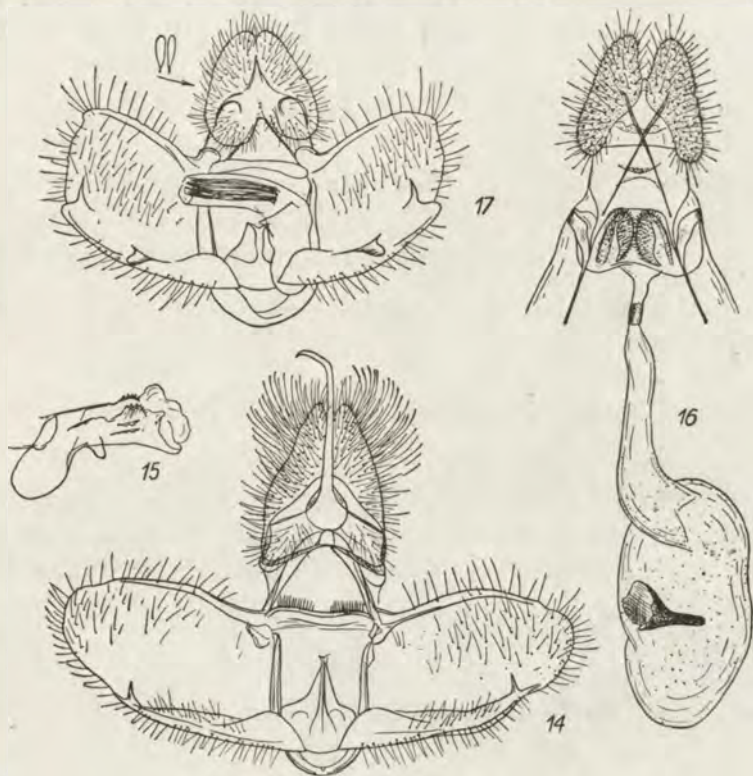
[Figs. 14, 15]

Lectotype: „Sao Paulo, Alto da Serra, 20. V. 24, R. SPITZ”, G. Sl.: 4351.

Valva broad, subovate with costa well developed; sacculus reaching beyond the middle of the ventral edge of valva, broad at base, pointed terminally

and provided with subterminal, dorsal thorn; uncus long, pointed; transtilla with two groups of long spines; aedeagus strong, short, provided with two dorsal combs subterminally and short, rounded ventro-terminal projection; juxta with elongate median portion; no cornuti in examined specimen.

The species belongs in *Sparganothinae*.



Figs. 14–17. Male and female genitalia: 14 – *Capua leptophracta* MEYR., lectotype; 15 – aedeagus of same specimen; 16 – *C. ruficapilla* MEYR., type; 17 – *C. thiodyta* MEYR., type.

***Capua ruficapilla* MEYRICK, 1932: 252**

[Fig. 16]

Type: „Ost Bolivia, Rio Songo, 750 m.,” G. S.: 4350.

Labia broad, rather short; gonapophyses posteriores longer than gonapophyses anteriores; lamella vaginalis very broad, rounded on anterior corners; large, minutely spined lobes in ostium-area; ductus bursae long, tapering towards lamella vaginalis, provided with strongly sclerotized ring in posterior portion; bursa copulatrix elongate; signum strong, narrowing apically; bursa and anterior portion of ductus characteristically sculptured.

Capua thiodyta MEYRICK, 1931: 148

[Fig. 17]

Type: "Sao Paulo, R. SPITZ", G. Sl.: 4343.

Valva broad, short, delicately rounded posteriorly; costa of valva long, bulbous anteriorly; sacculus strong, rounded terminally, provided with elongate, rounded terminally dorsal projection in the middle, and dorsal, spined subterminal thorn; tegumen delicate; uncus absent (?); socii broad, elongate-ovate; transtilla weak; aedeagus very large, bent, provided with numerous long cornuti.

Eulia HBN.*Eulia aphrobapta* MEYRICK, 1931: 152

This species is referable to the *Cochylidae* and is listed in the second part of this paper [p. 26].

Eulia chionocarpa MEYRICK, 1932: 257

[Fig. 18]

Type: "Centr. Cordil., Guindin, Columb. XI., 2600 m., EDEN", G. Sl. 4332.

Labia slender; lamella genitalis broad; lamella vaginalis with slender and long lateral parts; gonapophyses anteriores rather short; ductus bursae long, broader in anterior portion than in posterior portion; bursa copulatrix ovate, transparent.

Eulia oligachthes MEYRICK, 1932: 257

[Fig. 19]

Type: "Orosi 1500 m., Costa Rica", G. Sl.: 4324.

Labia partially damaged, broad; gonapophyses anteriores very long; lamella vaginalis broad in median portion, tapering towards gonapophyses; ostium rounded; introitus short, strongly sclerotized; ductus bursae long, narrow in posterior portion; bursa copulatrix elongate, sculptured; signum very long, capitate. The species is a member of the *Archipiini*.

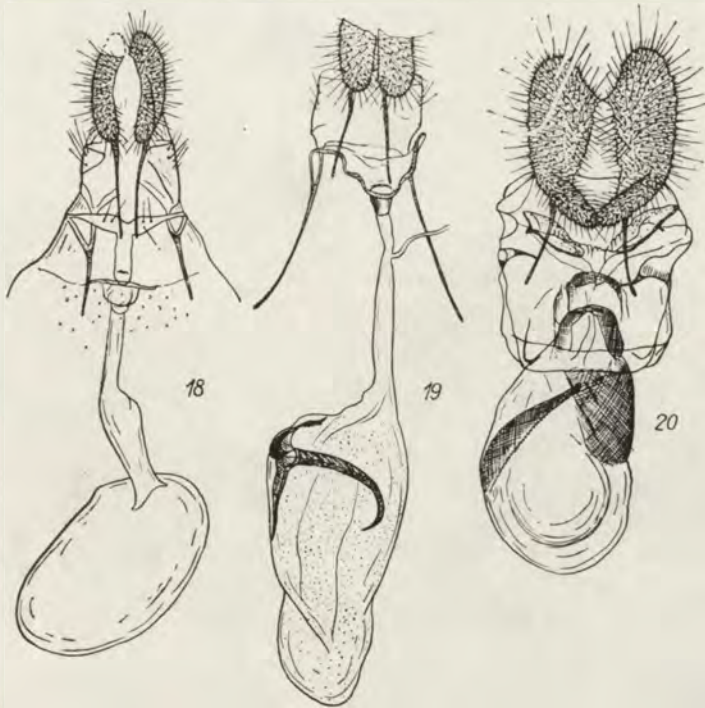
Eulia exanthina MEYRICK, 1931: 152

[Fig. 20]

Type: "Minas, Geraës, Passa Quatro, ZIKAN, 1921-22", G. Sl.: 4308.

Labia very large, broad, rounded terminally; gonapophyses anteriores long; gonapophyses posteriores very short; lamella vaginalis very large, broad, partially transparent; lobes of ostium elongate; introitus well sclerotized;

ductus bursae very short; bursa copulatrix broad, provided with two large sclerites.



Figs. 18-20. Female genitalia: 18 — *Eulia chionocarpa* MEYR., type; 19 — *E. oligachthes* MEYR., type; 20 — *E. exanthina* MEYR., type.

***Eulia exstinctrix* MEYRICK, 1931: 153**

[Figs. 21, 22]

Lectotype: „Sao Paulo, R. SPITZ”, G. Sl.: 4331.

Valva elongate, broadest beyond the middle, rounded terminally; sacculus short, strongly sclerotized, pointed terminally; tegumen broad; uncus well developed, rounded apically; socii long, gnathos with rather short lateral arms and long terminal plate; transtilla narrow; aedeagus very broad, rounded apically, provided with short basal portion; numerous, rather short cornuti present.

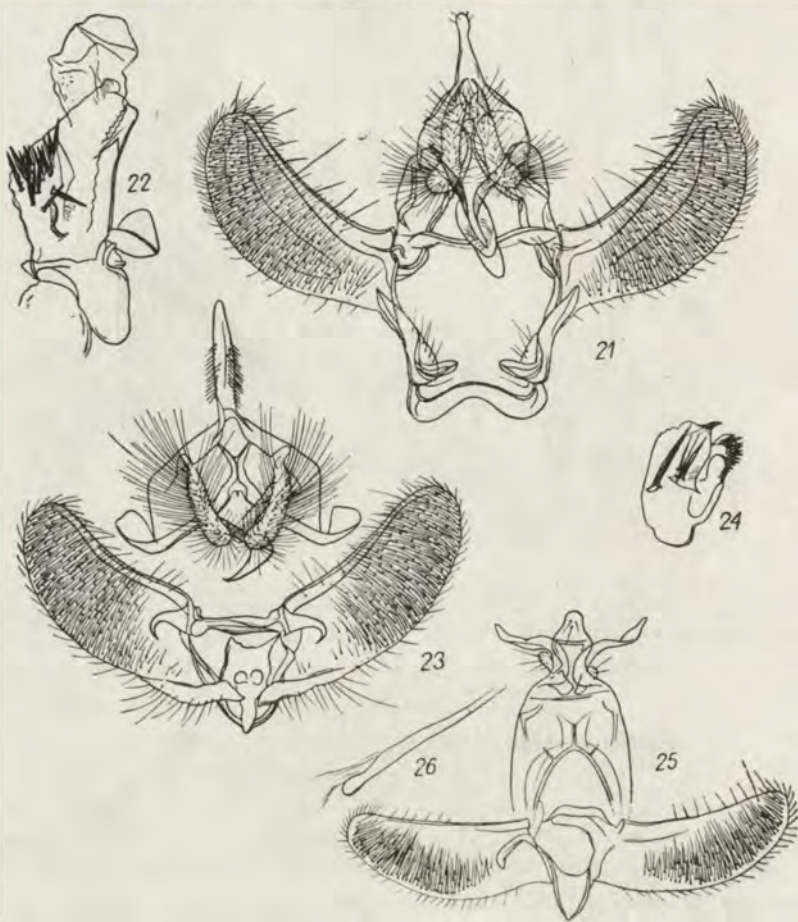
***Eulia hypochloris* MEYRICK, 1932: 256**

[Figs. 23, 24]

Type: „La Trinidad, Costa Rica”, G. Sl.: 4329.

Valva elongate, slightly tapering posteriorly, rounded terminally; sacculus weak, reaching $\frac{1}{3}$ of the ventral edge of valva; tegumen broad; uncus long,

pointed; socii long, drooping, broadening terminally; gnathos strong with pointed terminal projection; transtilla in the shape of a band with curved hooks on bases; aedeagus very short, broad, pointed terminally; one large cornutus and three smaller ones, and spined area present.



Figs. 21-26. Male genitalia: 21 - *Eulia exstinctrix* MEYR., lectotype; 22 - aedeagus of same specimen; 23 - *E. hypochloris* MEYR., type; 24 - aedeagus of same specimen; 25 - *E. multistrigata* MEYR., type; 26 - aedeagus of same specimen.

***Eulia melanochlora* MEYRICK, 1931: 151**

Lectotype: "Minas, Geraës, Passa Quatro, ZIKAN, 1921-22", G. Sl.: 10327 (CLARKE).

The lectotype designated by Dr. Gates CLARKE. The species was transferred by the same author (1955) from *Eulia* HBN. to *Orthocomotis* DOGN.

***Eulia multistrigata* MEYRICK, 1932: 260**

[Figs. 25, 26]

Type: "Costa Rica, Poás, 2150 m., 24-27. IV. 30, REIMOSER", G. Sl.: 4335.

Valva elongate, broadened in the middle, rounded terminally; sacculus atrophied; vinculum very long, pointed; tegumen broad, uncus broad in the middle, slightly tapering in posterior portion terminally; socii rather weak; gnathos consisting of two pointed portions; aedeagus very slender, tapering terminally.

***Eulia niphastra* MEYRICK, 1931: 151**

[Fig. 27]

Type: "Esprito, Santo Guandú, Decbr. 1920, F. HOFFMANN", G. Sl.: 4339.

Labia elongate; gonapophyses long; lamella vaginalis slender, broadening in the median portion, delicately sculptured; ductus bursae long, tapering posteriorly; bursa copulatrix rounded, transparent; no signum.



Figs. 27-31. Male and female genitalia: 27 - *Eulia niphastra* MEYR., type; 28 - *E. oystola* MEYR., type; 29 - aedeagus of same specimen; 30 - *E. parvisignis* MEYR., type; 31 - aedeagus of same specimen.

***Eulia ocystola* MEORICK, 1932: 259**

[Figs. 28, 29]

Type: "Costa Rica, Irazu, 17-23. VII. '30, 2500-2800 m., REIMOSER", G. Sl.: 4328.

Valva elongate, rounded terminally; sacculus very strong, broad at base, provided with very large ventral projection before the middle and pointed free termination; tegumen broad; uncus short, pointed; socii long; gnathos with broad lateral arms and long termination; transtilla with broad central part; aedeagus large, of same width throughout, provided with small termination; minute spines and sculptures in vesica present.

***Eulia parvisignis* MEYRICK, 1931: 152**

[Figs. 30, 31]

Type: "Sao Paulo, R. SPITZ", G. Sl.; 4327.

Valva rather slender, broadening in posterior portion, then tapering terminad; sacculus long, slender in anterior portion, strongly concave beyond the middle, broadening and rounded in terminal part; tegumen very large; uncus strong, very long, broadening and winged terminally; socii large, erect, spined and hairy; gnathos with very long arms and very small termination; transtilla simple; aedeagus slender, tapering posteriorly; about ten cornuti in vesica present.

***Eulia phaloniodes* MEYRICK, 1932: 257**

The species transferred to the *Coehylidae* (p. 25).

***Eulia prosecta* MEYRICK, 1932: 259**

[Fig. 32]

Type: "Orosi, 1500 ft., Costa Rica", G. Sl. 4342.

Labia slender; gonapophyses long; lamella genitalis elongate; lamella vaginalis delicate, sculptured; sterigma weak; introitus well sclerotized, broadening posteriorly; ductus bursae rather long, broadening towards bursa; bursa copulatrix large, ovate; two signa characteristic of the *Laspeyresini* present; delicate sculptures on bursa copulatrix and anterior portion of ductus bursae present.

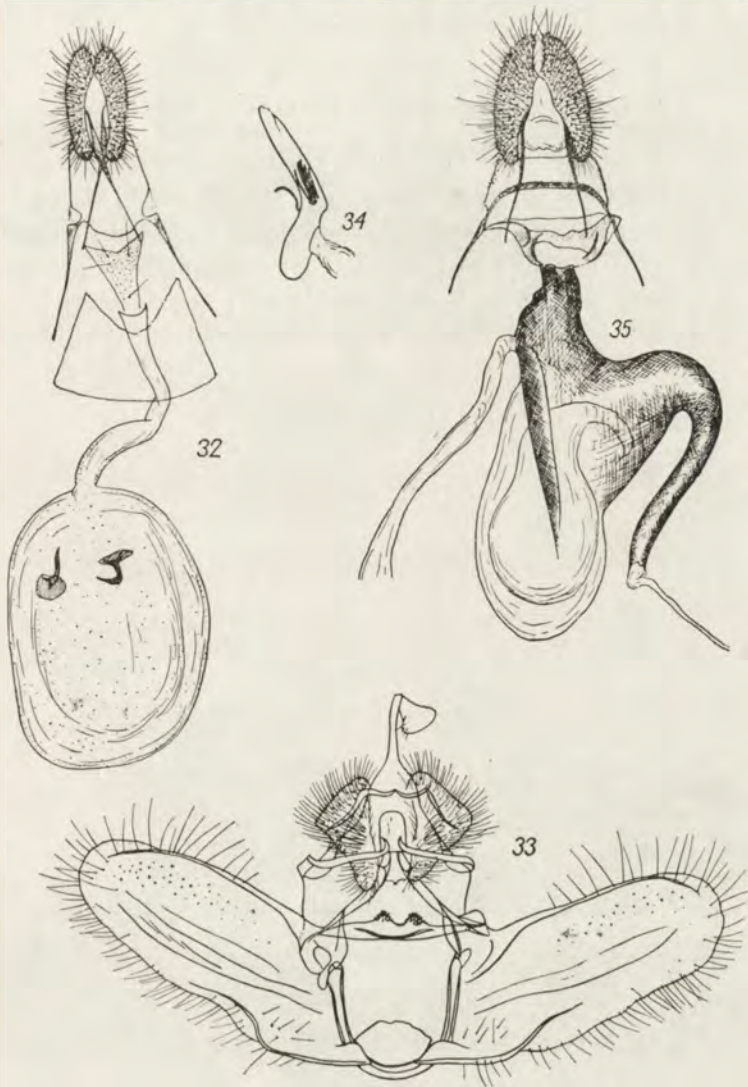
***Eulia rhizosema* MEYRICK, 1931: 152**

[Figs. 33, 34]

Lectotype: "Sao Paulo, R. SPITZ", G. Sl. 4312.

Valva large, elongate, rounded terminally; sacculus delicate, without any free terminations; tegumen broad; uncus long, strongly broadening terminally; socii large, subtriangular; transtilla slender, provided with two small, spined

projections near the middle; aedeagus slender, bent; one large and six slender, weak cornuti in vesica present.



Figs. 32-35. Male and female genitalia: 32 - *Eulia prosecta* MEYR., type; 33 - *E. rhizosema* MEYR., lectotype; 34 - aedeagus of same specimen; 35 - *E. sectionalis* MEYR., type.

***Eulia sectionalis* MEYRICK, 1932: 260**

[Fig. 35]

Type: "Orosi, 1500 m., Costa Rica", G. Sl.: 4325.

Labia rather broad; gonapophyses posteriores longer than gonapophyses anteriores; lamella vaginalis broad with rounded anterior edge and protru-

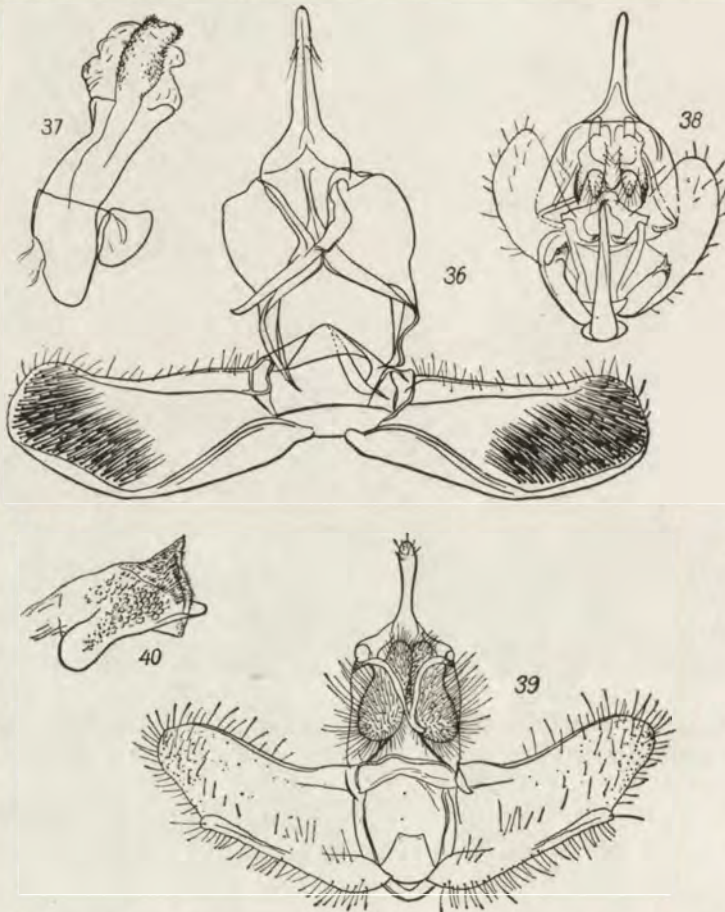
ding lateral portions; ductus bursae very short, strongly sclerotized, joined with strongly sclerotized areas of bursa copulatrix; very characteristic lateral tube present; anterior portion of bursa transparent.

Eulia smaragdophaea MEYRICK, 1932: 258

[Figs. 36, 37]

Lectotype: "Sta Catharina, Jaraguá, Fr. HOFFMANN", G. Sl.: 4313.

Valva broad, broadening posteriorly, provided with long spines in ventro-posterior area; costa of valva rather straight; sacculus broad in basal portion, without a free termination; tegumen very broad; uncus long, broad at base, pointed terminally; gnathos strong with long, pointed terminal projection;



Figs. 36-40. Male genitalia: 36 - *Eulia smaragdophaea* MEYR., lectotype; 37 - aedeagus of same specimen; 38 - *E. tephrodelta* MEYR., lectotype; 39 - *E. trissophricta* MEYR., lectotype; 40 - aedeagus of same specimen.

transtilla broad; aedeagus broad, very slightly bent, provided with small ventral termination; vesica spined in internal areas.

***Eulia tephrodelta* MEYRICK, 1932: 260**

[Fig. 38]

Lectotype: "Mexico, 1868, HEDEMANN", G. Sl.: 4 (OBRAZTSOV).

Valva elongate-ovate; sacculus with well sclerotized, dentate and pointed termination; tegumen large; uncus long; gnathos with large, spined lateral projections; socii long; aedeagus slender, tapering posteriorly; no cornuti in vesica present.

The genitalia slided by Dr. OBRAZTSOV, unfortunately individual parts weakly visible.

***Eulia trissophricta* MEYRICK, 1932: 259**

[Figs. 39, 40]

Lectotype: "Sta. Catharina, Jaraguá, Fr. HOFFMANN", G. Sl.: 4340.

Valva broad at base, delicately narrowing in the middle, rounded terminally; sacculus long, broad at base, provided with very small free termination; tegumen long; uncus long, broadening terminally; gnathos with slender arms and weak termination; socii very large with large, rounded ventral portions; transtilla simple, rather broad; aedeagus broad, short, ventral termination short, rounded; numerous small spines and small scale-shaped cornuti present.

***Eulia tristriata* MEYRICK, 1931: 151**

[Figs. 41, 42]

Lectotype: „Sao Paulo, Alto da Serra, 29–30. X. 27, ZERNY", G. Sl.: 4307.

Valva characteristic of *Clepsis* GUEN., broad, rounded terminally sacculus well sclerotized, broad at base and in the middle, very thin in posterior portion; tegumen elongate; uncus long, strongly broadening posteriorly; socii atrophied; gnathos well developed with strong terminal plate; aedeagus slender, bent, pointed ventro-terminally; no cornuti in vesica in the examined specimen.

***Goniotorna* MEYRICK, 1933: 423**

Type species: *Goniotorna chersopis* MEYRICK, l. c.

***Goniotorna chersopis* MEYRICK, 1933: 423**

Lectotype: „SIKORA, Madagasc.", G. Sl.: 2247 (DIAKONOFF).

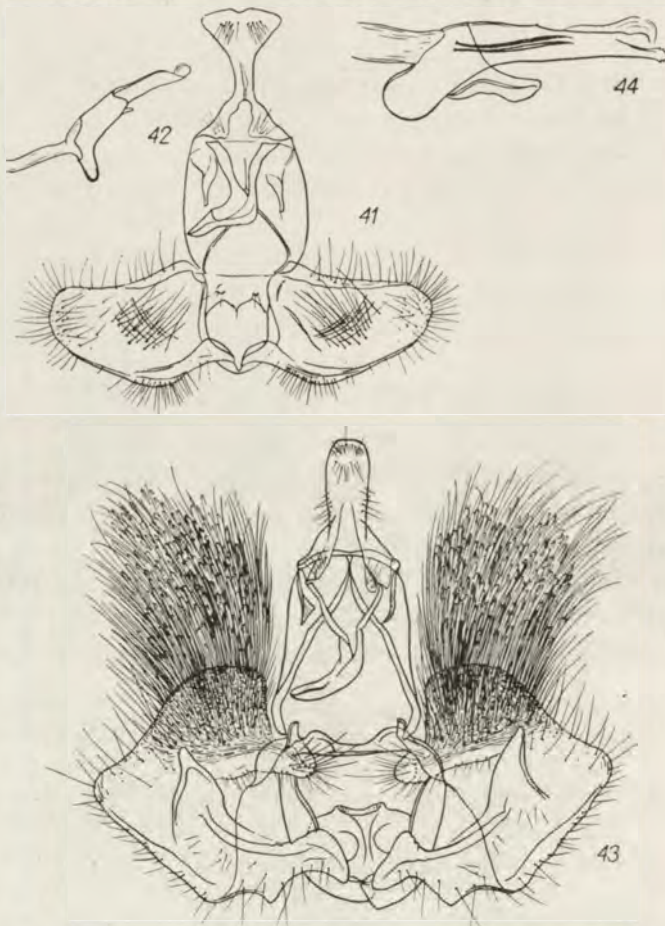
The lectotype designated by A. DIAKONOFF (1959). The male genitalia and the redescription of this species are in the same paper.

Homona WALKER*Homona amphigona* MEYRICK, 1936: 60

[Figs. 43, 44]

Lectotype: "Sumatra, Medan (FULMEK)", G. Sl. 4299.

Valva very broad, broadest beyond the base, rounded in the middle laterally; sacculus strong, provided with two angulate ventral projections and long dorsal termination; tegumen slender; uncus rather short, broad; gnathos with slender lateral arms and long termination; socii very small; transtilla simple, narrowed in the middle; juxta broad; aedeagus long, broad in basal portion, rather straight in posterior portion ventrally, provided with rounded, minutely dentate termination; two long cornuti in vesica present.



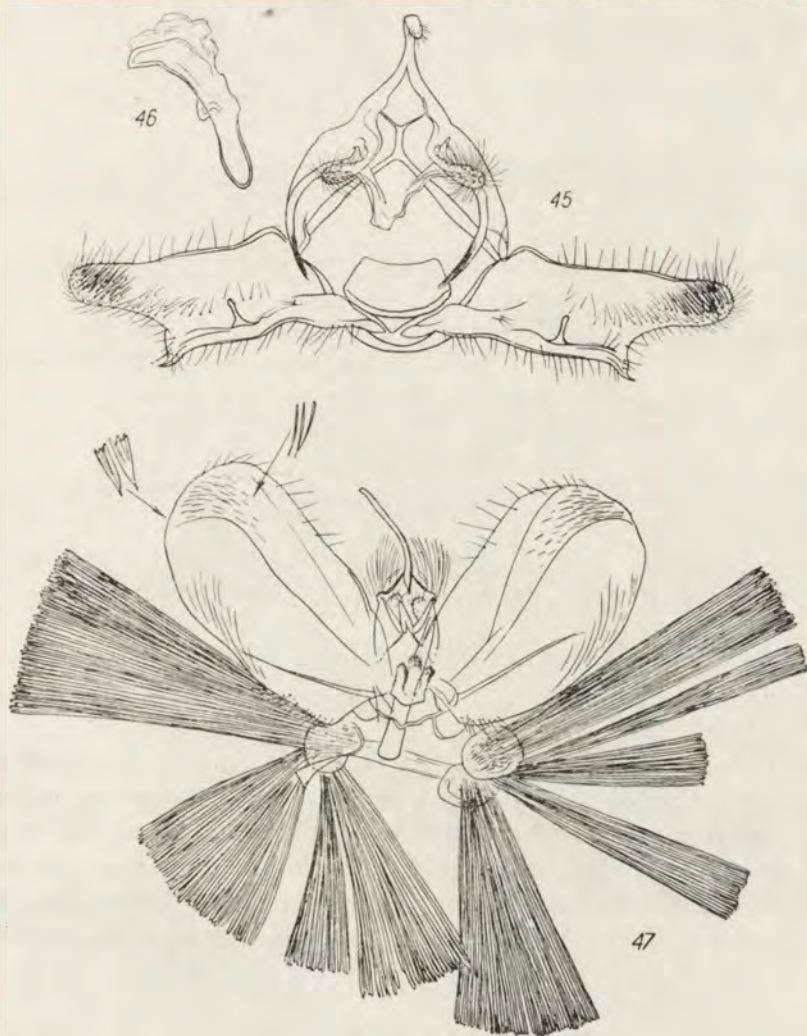
Figs. 41-44. Male genitalia: 41 - *Eulia tristriata* MEYR., lectotype; 42 - aedeagus of same specimen; 43 - *Homona amphigona* MEYR., lectotype; 44 - aedeagus of same specimen.

Meritastis MEYRICK*Meritastis heliadelpha* MEYRICK, 1932: 261

[Figs. 45, 56]

Lectotype: "Ost Bolivia, Rio Songo, 750 m.", G. Sl.: 4338.

Valva elongate, slender, narrowed beyond sacculus; costa of valva narrow; sacculus long, pointed terminally, provided with long dorsal projection beyond the middle; tegumen very broad; uncus slender, rounded apically; gnathos with very long pointed lateral projections; socii large, broadening apically;



Figs. 45-47. Male genitalia: 45 — *Meritastis heliadelpha* MEYR., lectotype; 46 — aedeagus of same specimen; 47 — *Polyortha crypsilitha* MEYR., type.

juxta large; aedeagus rather small, curved in posterior portion; no cornuti in vesica present.

***Polyortha* DOGNIN**

***Polyortha crypsilitha* MEYRICK, 1932: 264**

[Fig. 47]

Type: "Sta. Catharina, Jaraguá, Fr. HOFFMANN", G. Sl.: 4334.

Valva very broad, rounded apically with very large ventral pocket; tegumen small; uncus very long, slender; gnathos with long and pointed termination; socii large; aedeagus simple, tapering posteriorly.

***Polyortha halianassa* MEYRICK, 1934: 264**

[Fig. 48]

Type: "Sta. Catharina, Jaraguá, Fr. HOFFMANN", G. Sl.: 4341.

Lamella genitalis broad; gonapophyses rather long; lamella vaginalis broad, very delicately spined in posterior portions, broad in the middle; ductus brusae very long, provided with small group of dentes in the posterior portion; bursa copulatrix a little broader than the ductus; signum small.

***Philedone* HBN.**

***Philedone decagramma* MEYRICK, 1932: 252**

[Fig. 49]

Type: "Santa Catharina, Neu Bremen, 23. II. 31, Fr. HOFFMANN", G. Sl.: 4347.

Valva broad, rounded terminally; sacculus slender, provided with two small ventral projections, first in the middle, second longer and pointed before the end; posterior portion of sacculus weakly sclerotized; uncus very slender, pointed; socii broad, elongate; transtilla with broad median portion, which is minutely spined; aedeagus large, curved, pointed terminally; numerous long cornuti present in vesica. The species belongs in *Sparganothinae*.

***Tapinodoxa* MEYRICK, 1931: 154**

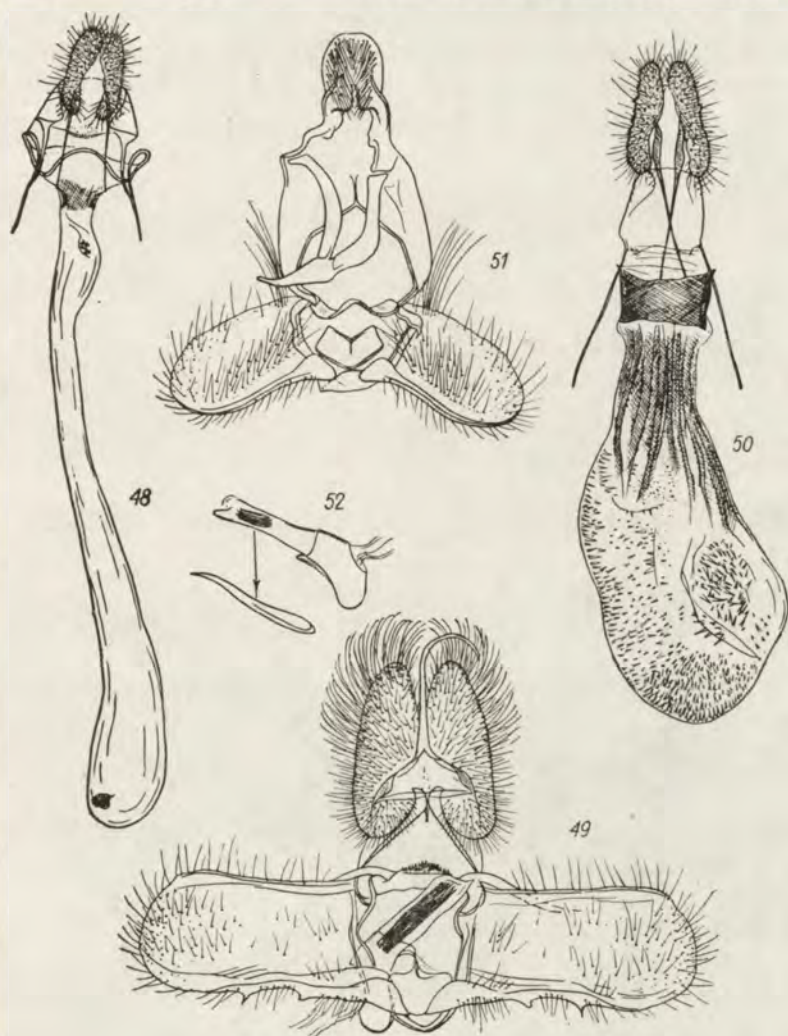
Type species: *Tapinodoxa autonephes* MEYRICK, l. c.

Tapinodoxa autonephes MEYRICK, 1931: 154

[Fig. 50]

Lectotype: "Paraguay, Asunción, 1920-21, F. SCHADE", G. Sl.: 5 (OBRATSOV).

Lamella vaginalis small; introitus very broad, subquadrate, strongly sclerotized; ductus bursae short and broad with elongate, strongly sclerotized and minutely spined areas; bursa copulatrix broad, provided with numerous spines. The species is probably belonging to the *Cochylidae*, but I have no male for examination.



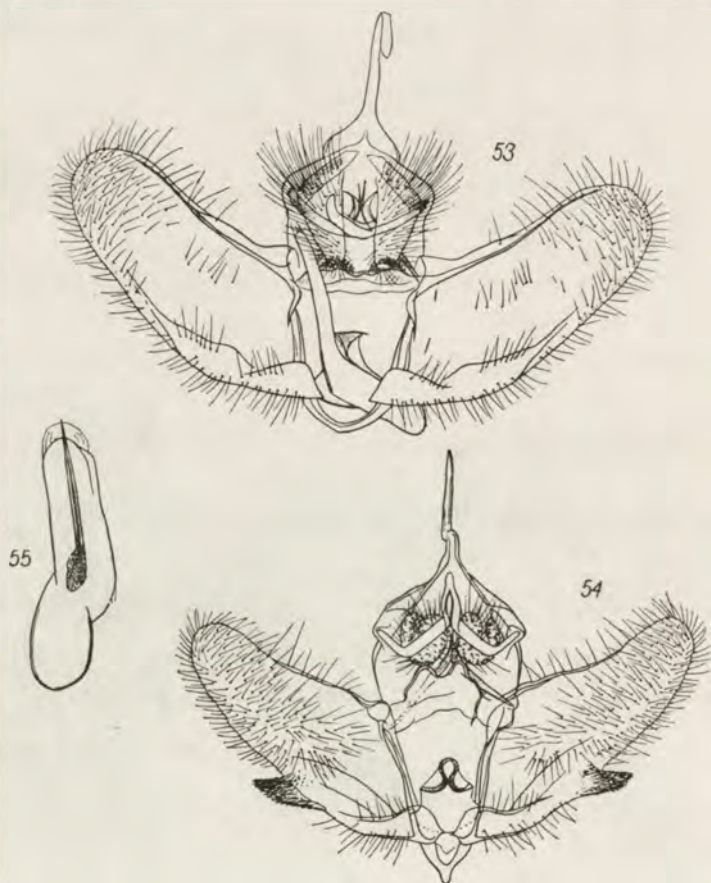
Figs. 48-52. Male and female genitalia: 48 - *Polyortha halianassa* MEYR., type; 49 - *Philedone decagramma* MEYR., type; 50 - *Tapinodoxa autonephes* MEYR., lectotype; 51 - *Tortrix artocopa* MEYR., lectotype; 52 - aedeagus of same specimen.

Tortrix L.*Tortrix artocopa* MEYRICK, 1932: 255

[Figs. 51, 52]

Lectotype: "Orosi, 1800 m., Costa Rica", G. Sl.: 4333.

Valva rather small, elongate, rounded terminally; sacculus with broad base, thin in remaining portions, without a free termination; tegumen very large; uncus broad, rounded terminally, spined and hairy; socii rather atrophied; gnathos strong with large, pointed termination; transtilla with larger basal portions; aedeagus rather straight, provided with small ventral termination; several small cornuti in vesica. The species belongs to the *Archipini*.



Figs. 53-55. Male genitalia: 53 - *Tortrix cosmoscelis* MEYR., type; 54 - *T. degenerans* MEYR., lectotype; 55 - aedeagus of same specimen.

***Tortrix cosmoscelis* MEYRICK, 1932: 255**

[Fig. 53]

Type: "Sta. Catharina, Jaraguá, Fr. HOFFMANN", G. Sl.: 4344.

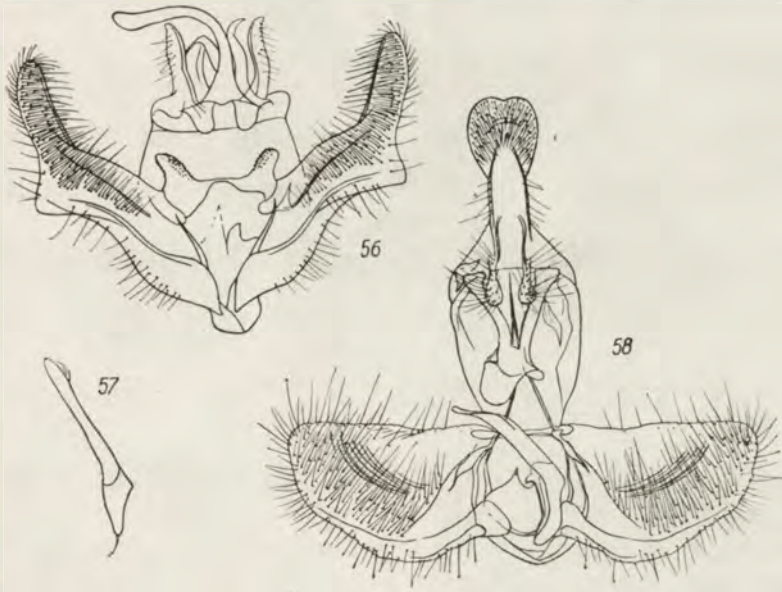
Valva broad, elongate, rounded apically with costa well developed; sacculus rather broad, weakly sclerotized beyond the middle of ventral edge of valva; tegumen broad; uncus very long with broad base; socii large, well sclerotized dorsally; transtilla broad with two groups of spines; aedeagus large, bent, narrowing terminally and slender in posterior half.

***Tortrix degenerans* MEYRICK, 1930 b: 224**

[Figs. 54, 55]

Lectotype: "Serra do Itatiaya, Südseite, 2000-2700 m., 22. X. 27, ZERNY". G. Sl.: 4336.

Valva broad at base, tapering terminad, rounded apically; sacculus well developed, provided with large, minutely spined free termination; vinculum protruding ventrally; tegumen broad; uncus very slender, pointed; gnathos with elongate termination; socii broad; transtilla bilobed; aedeagus large with very long capitate cornutus.



Figs. 56-60. Male genitalia: 56 - *Tortrix hemileuca* MEYR., lectotype; 57 - aedeagus of same specimen; 58 - *T. iopsamma* MEYR., lectotype.

Tortrix hemileuca MEYRICK, 1932: 256

[Figs. 56, 57]

Lectotype: "Ost Columbia, Bogota, 2800 m., X.", G. Sl.: 4348.

Valva elongate with narrow posterior portion; sacculus long, broad in basal half; tegumen broad; uncus very long, broadening terminally; socii and gnathos similar in the shape to each other; transtilla with two large, delicately spined lateral projections; aedeagus delicate, slightly bent.

Tortrix iopsamma MEYRICK, 1931: 150

[Fig. 58]

Lectotype: "Sao Paulo, Alto da Serra, 29-30. X. 27, ZERNY", G. Sl.: 4345.

Valva short, broadest in middle; sacculus long, tapering posteriorly, without free termination; tegumen large; uncus very strong, decidedly broadened and rounded terminally; gnathos with strong terminal plate; socii rather small; transtilla simple; aedeagus delicate, long, curved.

Tortrix liotoma MEYRICK, 1936: 60

Lectotype: "Szetschwan, Sunpanting, Exp. STÖTZNER", G. Sl.: 4301.

Tortrix liotoma MEYR. — SYN. NOV. is synonymous with *Clepsis semialbana* (GUEN.) and shows no differences in the genitalia and pattern from European specimens of this species.

Tortrix purata MEYRICK, 1932: 254

Lectotype: „Costa Rica, Irazu, 2200-2500 m., 21-28. V. '30, REIMOSER", G. Sl.: 1 (OBRAZTSOV).

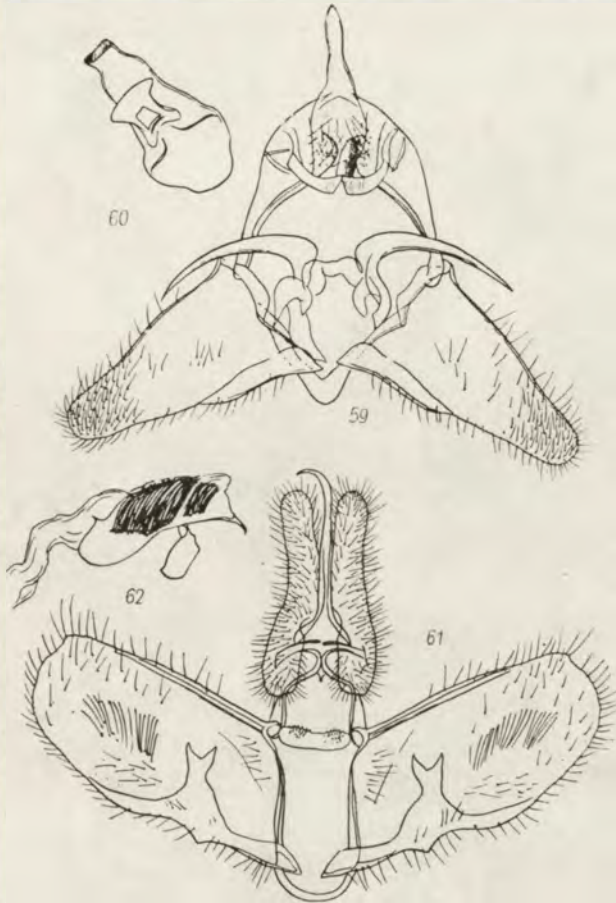
The lectotype designated by N. OBRAZTSOV (1961); the species transferred to the genus *Subargyrotaenia* OBR. (l. c.: 41).

Tortrix stictoneura MEYRICK, 1930b: 224

[Figs. 59, 60]

Lectotype: „Serra do Itatiaya, Südseite, 2000-2700 m., 22. X. 27, ZERNY", G. Sl.: 4337.

Valva broad at base, decidedly tapering terminad, rounded apically; sacculus weak, rather short, without free termination; tegumen broad; uncus long, slender; gnathos with delicate terminal plate; socii small; transtilla with very long lateral thorns; aedeagus short, broad.



Figs. 59-62. Male genitalia: 59 — *Tortrix stictoneura* MEYR., lectotype; 60 — aedeagus of same specimen; 61 — *Sparganothis chinophthalma* MEYR., type; 62 — aedeagus of same specimen.

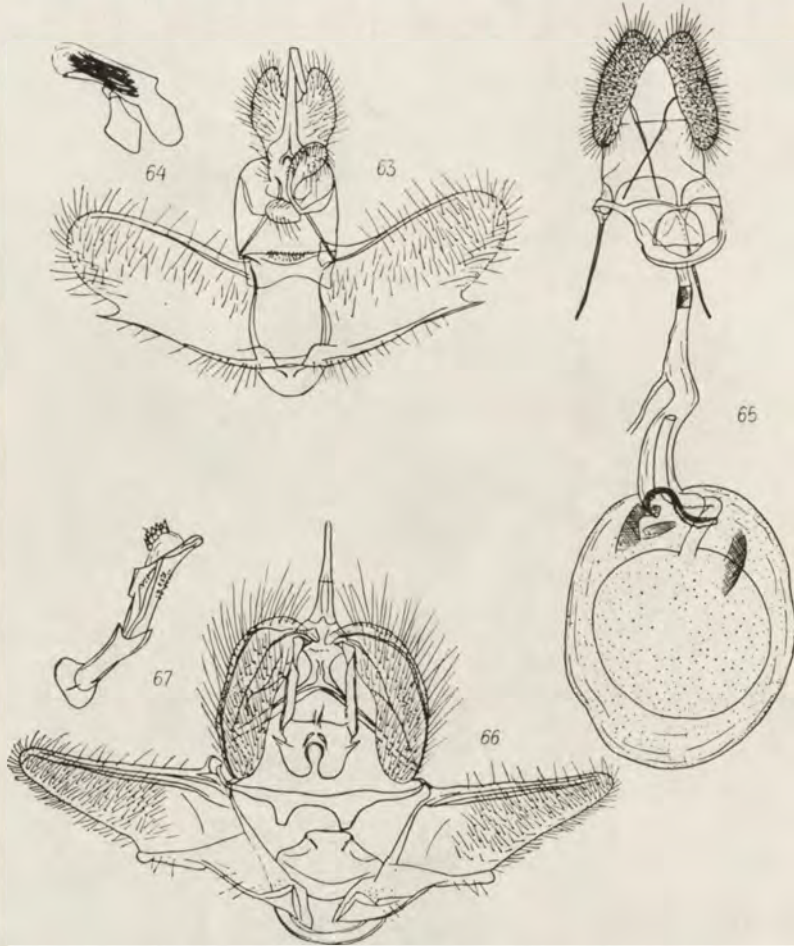
Sparganothis HÁN.

Sparganothis chionophthalma MEYRICK, 1932: 263

[Figs. 61, 62]

Type: "Ost Bolivia, Rio Songo, 750 m.", G. Sl.: 4303.

Valva broad with costa well sclerotized; sacculus slender, atrophied beyond the middle of ventral edge of valva, provided with large, bifurcate dorsal projection in the middle; socii very long; uncus long, pointed; transtilla with two groups of small spines; aedeagus short, provided with sharp ventro-terminal projection; numerous rather short cornuti in two groups present.



Figs. 63–67. Male and female genitalia: 63 — *Sparganothis geminorum* MEYR., type; 64 — aedeagus of same specimen; 65 — *S. helianthes* MEYR., type; 66 — *Spatalistis vulpicoma* MEYR., type; 67 — aedeagus of same specimen

***Sparganothis geminorum* MEYRICK, 1932: 263**

[Figs. 63, 64]

Type: "Palo Verde, Costa Rica, 1600 m.", G. Sl.: 4304.

Valva elongate, rounded terminally with costa long, well sclerotized; sacculus very slender, terminate in pointed tip; uncus long, rather broad; socii erect; terminations of gnathos large, bulbous; transtilla weak, broadened and spined in median portion; aedeagus short, straight in posterior portion, provided with short ventral termination; cornuti numerous, long.

***Sparganothis helianthes* MEYRICK, 1932: 264**

[Fig. 65]

Type: "Costa Rica, Rio Surumbes, I. 10, BRADE", G. Sl. 4305.

Labia broad; gonapophyses anteriores as long as gonapophyses posteriores; lamella vaginalis broad, rounded anteriorly, provided with narrow lateral parts; ductus bursae long, narrow before lamella, provided with strongly sclerotized ring; bursa copulatrix large, rounded, delicately sculptured and provided with elongate signum and two strongly sclerotized areas.

Spatalisticus* MEYR.**Spatalisticus vulpicoma* MEYRICK, 1932: 261**

[Figs. 66, 67]

Type: "Santa Catharina, Neu Bremen, Fr. HOFFMANN", G. Sl.: 4306.

Valva strongly tapering terminad; sacculus very broad at base, slender in posterior portion, rounded apically, minutely dentate on the ventral edge; costa of valva strongly sclerotized; tegumen broad; uncus slender, tapering apically; gnathos strong with complicate terminal plate; socii enormously large, provided with strongly sclerotized dorsal edges; transtilla with two submedian projections; aedeagus slender, spined laterally beyond the middle; 7 very short cornuti in vesica. The species differs from the type species of the genus *Spatalisticus* MEYR. and must be transferred to the *Archipini*.

COCHYLIDAE***Aethes* BILLB.****? *Aethes phaloniodes* (MEYRICK), **comb. nov.****

[Fig. 68]

Eulia phaloniodes MEYRICK, 1932: 257

Lectotype: "Santa Catharina, Jaraguá, Fr. HOFFMANN", G. Sl.: 4326.

Lamella vaginalis broad with strongly sclerotized anterior portions; ductus bursae very broad, short; bursa copulatrix elongate, spined. The species is known as a female only, and I cannot fix its systematic position.

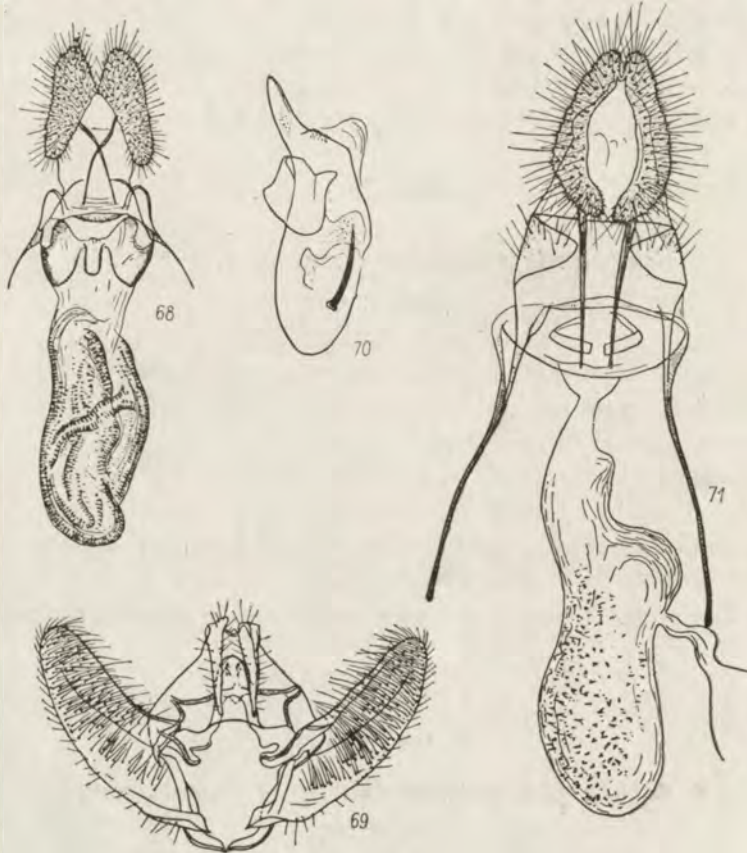
Carolella* BUSCK.**Carolella aphrobapta* (MEYRICK), **comb. nov.****

[Figs. 69, 70]

Eulia aphrobapta MEYRICK, 1931: 152.

Type: "Espirito, Santo Guandú, Octob. 1920, F. HOFFMANN", G. Sl.: 4330.

Valva elongate, rounded apically; sacculus short, without free termination; transtilla with large central part; socii very long, tapering posteriorly; aedeagus very large, protruding and pointed ventro-terminally; a single, large cornutus and delicate dentes in terminal portion of aedeagus present.



Figs. 68 – 71. Male and female genitalia: 68 – *Aethes phaloniodes* (MEYR.), lectotype; 69 – *Carolella aphrobapta* (MEYR.), type; 70 – aedeagus of same specimen; 71 – *Euxanthis selecta* MEYR., lectotype.

Euxanthis HBN.

Euxanthis selecta MEYRICK, 1931: 158

[Fig. 71]

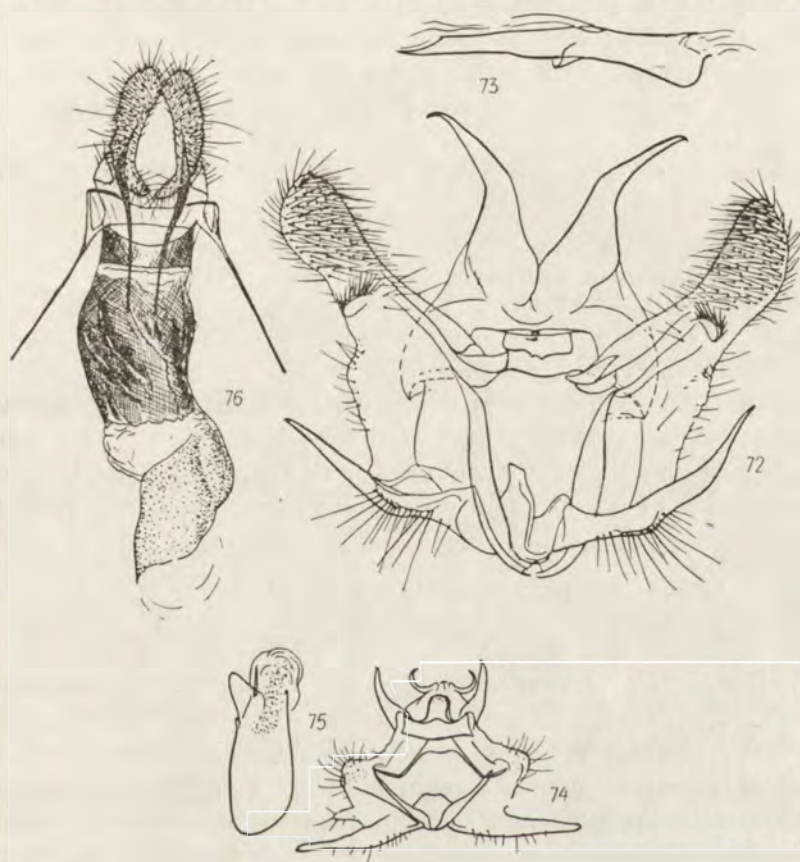
Lectotype: "Paraguay, Asuncion, 1920–21, F. SCHADE", G. Sl.: 4228.

Labia large; lamella genitales broad; gonapophyses anteriores very long, much longer than gonapophyses posteriores; lamella vaginalis broad, elliptical; ostium large; ductus bursae short, transparent; bursa copulatrix elongate, spined.

***Euxanthis steropsis* MEYRICK, 1931: 158**

[Figs. 72, 73]

Type: "Nord du Chaco de Sta. Fé, Argentina, WAGNER'S Brothers, '04",
G. Sl.: 4222.



Figs. 72-76. Male and female genitalia: 72 — *Euxanthis steropsis* MEYR., type; 73 — aedeagus of same specimen; 74 — *Phalonia chalcospila* MEYR., type; 75 — aedeagus of same specimen; 76 — *Ph. sphaeragidias* MEYR., type.

Valva very large at base, strongly tapering posteriorly in terminal portion, provided with a group of spines; sacculus strong with long, pointed free termination; tegumen short with long, pointed socii; transtilla broad; aedeagus slender, rather straight, pointed terminally; no cornuti in specimen examined.

This species belong to new genus closely related to Palaearctic *Eugnosta* HBN.

Phalonia HBN.***Phalonia chalcospila*** MEYRICK, 1932: 265

[Figs. 74, 75]

Type: "Costa Rica, N. Hamburg, Rio Reventazon, 30. IV.–8. V., REIMOSER", G. Sl.: 4231.

Valva very broad, protruding laterally in the middle with costa separate and strongly sclerotized; sacculus long with long free termination; socii narrow, rather short; transtilla with large, minutely spined central part; aedeagus large, projected ventro-terminally; one small cornutus and minute spines in vesica present.

The species is referable to the genus *Aethesoides* RAZ. [*Ae. chalcospila* (MEYR.), comb. nov.].

Phalonia sfragidias MEYRICK, 1932: 265

[Fig. 76]

Type: "Andes Boliviae", G. Sl.: 4216.

Lamella genitales rather small; gonapophyses long; lamella vaginalis transparent with well sclerotized lateral portions; introitus strongly sclerotized, broad; ductus bursae joined with bursa copulatrix, very strongly sclerotized; in anterior portion of bursa small, numerous spines, remaining areas transparent.

Phalonia praefasciata MEYRICK, 1932: 266

[Figs. 77, 78]

Type: "Costa Rica, Irazu, 2200–2500 m., 21–28. V. 30, REIMOSER", G. Sl.: 4219.

Valva long, narrow; sacculus without free termination; lateral rounded projections of vinculum present; tegumen with long, erect socii; transtilla with long central part; aedeagus strong, pointed terminally; a single, very slender cornutus and delicate sculptures in vesica present. The species is referable to the genus *Phalonia* LE MARCH. [*Ph. praefasciata* (MEYR.), comb. nov.].

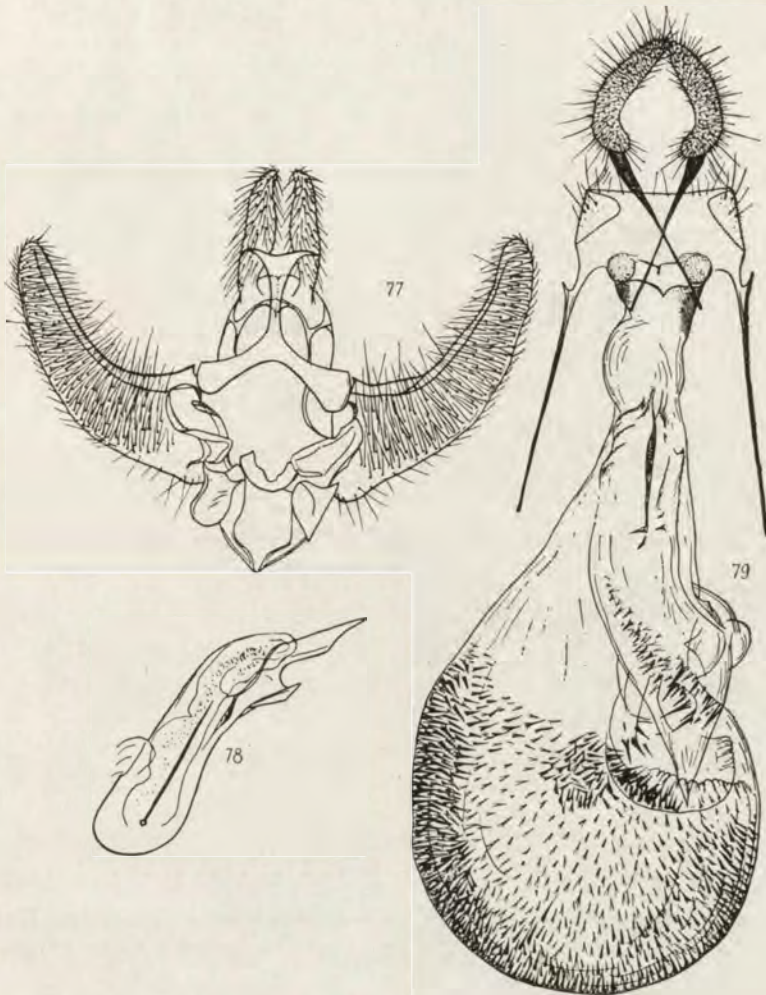
Phtheochroa STEPH.***Phtheochroa calyptrophanes*** MEYRICK, 1932: 266

[Fig. 79]

Type: "Süd Peru Obere, Madre de Dios, 1000 m.", G. Sl.: 4221.

Lamella genitales broad; gonapophyses anteriores very long; gonapophyses posteriores shorter than gonapophyses anteriores; lamella vaginalis transparent; introitus broad with two characteristic rounded, sculptured areas; ductus

bursae short; bursa copulatrix very large, spined (especially in anterior areas), transparent.



Figs. 77-79. Male and female genitalia: 77 — *Phalonia praefasciata* MEYR., type; 78 — aedeagus of same specimen; 79 — *Pththeochroa calyptrophanes* MEYR., type.

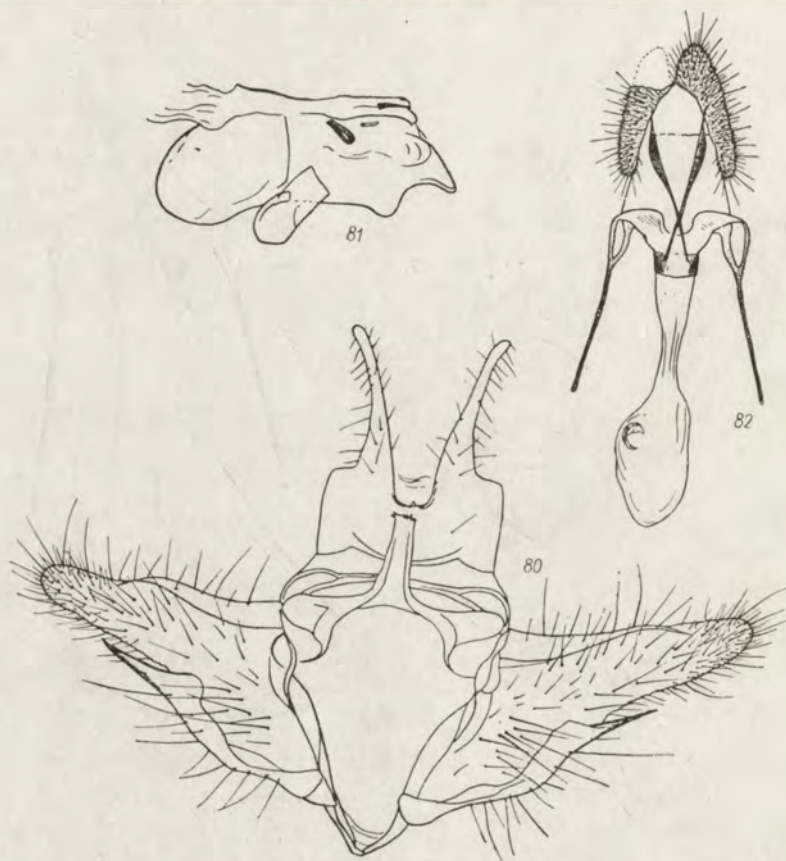
***Phtheochroa molybdanthes* MEYRICK, 1932: 266**

[Figs. 80, 81]

Type: "Santa Catharina, Neu Bremen, 30. I. 32, Fr. HOFFMANN", G. Sl.: 4223.

Valva subtriangular, narrowing terminad, rounded apically with costa strongly sclerotized; sacculus long, provided with pointed free termination;

socii long, broad at bases; transtilla with strong central part; aedeagus very broad. This species resembles „*Euxanthis*” *steropis* MEYR. genitally, but differs in the shape of transtilla.



Figs. 80–82. Male and female genitalia: 80 — *Phtheochroa molybdanthos* MEYR., type; 81 — aedeagus of same specimen; 82 — *Ph. tornocarpa* MEYR., type.

Phtheochroa tornocarpa MEYRICK, 1932: 267

[Fig. 82]

Type: “Nord Panama, Lino, 800 m.”, G. Sl.: 4230.

Gonapophyses long; lamella vaginalis with broad, narrowing terminally lateral parts; introitus strongly sclerotized; ductus bursae long, broad in posterior portion; bursa copulatrix rather small with weak signum.

The species is referable to the genus *Phalonia* LE MARCH. [*Ph. tornocarpa* (MEYR.), comb. nov.].

REFERENCES

- CLARKE, J. F. G. 1958. Catalogue of the Type Specimens of *Microlepidoptera* in the British Museum (Natural History) described by Edward MEYRICK. 3. *Tortricidae*, *Olethreutidae*, *Noctuidae*. London, 600 pp.
- DIAKONOFF, A. 1959. MEYRICK's types of *Tortricidae* from Madagascar in the Vienna Museum. Ann. naturhist. Mus. Wien., 63: 409-413. Wien.
- MEYRICK, E. 1930-1936. Exotic *Microlepidoptera*; vol. 4, 1930: 1-32; 1931: 33-192; 1932: 193-352; 1933: 353-448; vol. 5, 1936: 1-64. London.
- MEYRICK, E. 1930b. Ergebnisse einer zoologischen Sammelreise nach Brasilien, insbesondere in das Amazonasgebiet, ausgeführt von Dr. H. ZERNY. V Teil. *Microlepidoptera*. Ann. naturhist. Mus. Wien., 44: 223-268, 2 pls. Wien.
- OBRAZTSOV, N. S. 1961. Descriptions and Notes on North and Central American Species of *Argyrotaenia* with the Description of a New Genus (*Lepidoptera*, *Tortricidae*). Amer. Mus. Novit. No. 2048. New York.

STRESZCZENIE

Niniejsza praca jest katalogiem typów *Tortricidae* i *Cochylidae* opisanych przez E. MEYRICKA, a znajdujących się w Muzeum Przyrodniczym we Wiedniu. Gatunki, których genitalia nie były dotychczas znane, zostały krótko scharakteryzowane, a opisy uzupełnione rysunkami.

РЕЗЮМЕ

Настоящая работа является каталогом типов *Tortricidae* и *Cochylidae* описанных Е. Мейриком (E. MEYRICK), а хранящихся в Естественном Музее в Вене. Виды, которых genitalia не были до сих пор известны, кратко охарактеризованы, а описания пополнены рисунками.