

Józef RAZOWSKI

**Comments on the Catalogue of MEYRICK Types of *Tortricidae* (*Lepidoptera*) in the
Museum of Vienna with Descriptions of New Genera**

[With 11 Text-figures]

Abstract. The species illustrated in the paper cited in the title (RAZOWSKI 1964) are referred to the particular genera, if determined. One species (*megaloplaca*) recently found in the mentioned collection is discussed and 5 genera are described as new.

In the above mentioned publication almost all discussed species are preserved in their original genera: thus the generic names, with a few exceptions when they are changed, are not quoted in the systematic part of this paper. In the publication of 1964 the genitalia of types were briefly described. It was possible to determine the systematic positions of almost all the species. Those of the species only known so far on the basis of females remain unclear and are placed at the end of the particular tribes as "unplaced species". Five species required establishing new genera. The more important literature is cited for the species.

ALPHABETIC REVIEW OF SPECIES

<i>aequiflexa</i>	402	<i>categoria</i>	402
<i>aphrobapta</i>	401	<i>chalcospila</i>	401
<i>artocopa</i>	403	<i>chionocarpa</i>	403
<i>autonephes</i>	402	<i>chionophthalma</i>	402
<i>biforata</i>	402	<i>chlorolyca</i>	402
<i>calyptrophanes</i>	401	<i>clivigera</i>	401
		<i>cordifera</i>	401

<i>cosmoscelis</i>	401	<i>niphastra</i>	403
<i>crypsilitha</i>	400	<i>ocystolus</i>	402
<i>decagramma</i>	402	<i>osmotris</i>	402
<i>degenerans</i>	397, 402	<i>parvisignis</i>	399, 402
<i>digachthes</i>	403	<i>phaloniodes</i>	403
<i>elaeoptera</i>	402	<i>praefasciata</i>	401
<i>exanthina</i>	402	<i>prosecta</i>	403
<i>exstinctrix</i>	403	<i>purata</i>	403
<i>fabivora</i>	403	<i>rectangularis</i>	402
<i>geminorum</i>	402	<i>rhizosema</i>	401
<i>halianassa</i>	401	<i>ruficapilla</i>	401
<i>heliadelpha</i>	402	<i>salubricola</i>	403
<i>helianthes</i>	402	<i>sectionalis</i>	400
<i>hemileuca</i>	400	<i>selecta</i>	401
<i>hypochloris</i>	396, 402	<i>smaragdophaea</i>	401
<i>iopsamma</i>	403	<i>spilocryptis</i>	402
<i>labyrinthopa</i>	401	<i>steropis</i>	401
<i>leptophracta</i>	402	<i>stictoneura</i>	399, 402
<i>megaloplaca</i>	397, 402	<i>tephrodelta</i>	402
<i>melanochlora</i>	401	<i>thiodyta</i>	402
<i>molybdanthes</i>	401	<i>tornocarpa</i>	401
<i>multifurcata</i>	400	<i>trissophricta</i>	401
		<i>tristriata</i>	403
		<i>vulpicoma</i>	402

DESCRIPTIONS OF NEW GENERA

Subtranstillaspis gen.n.

Type species: *Eulia hypochloris* MEYRICK, 1931.

Forewing fairly broad, without costal fold; all veins separate; in hindwing $rr-m_1$ and m_3-cu_1 very short stalked.

Male genitalia (Figs 1, 2): Tegumen strong, broad; uncus simple, slender, haired dorsally, without terminal brush; socius drooping, rather weakly sclerotized, moderately hairy; gnathos arm slender, termination of gnathos hook-shaped, fairly long; vinculum simple. Valva elongate, rounded apically, with distinctly sclerotized costa and simple sacculus; disc of valva uniformly hairy in posterior part. Transtilla band-shaped, provided with basal hooks; juxta asymmetric, broad post-medially, with right corner strongly elongate, pointed, and left angle rounded. Aedeagus short, broad; coecum penis very short; cornuti: anterior group consisting of 3 inequally long, capitate spines, posterior group built of numerous short, simple spines.

Comments. Known from Costa Rica. Monotypical genus; female unknown. It is probably allied to *Transtillaspis* RAZOWSKI, showing similar structures of the tegumen complex, valva, juxta and aedeagus. The cornuti of the anterior group are, however, not fused with the basal plate, transtilla is weaker, not extending ventrad but provided with lateral hooks.

Saetosacculina gen.n.

Type species: *Tortrix degenerans* MEYRICK, 1930.

Forewing slender, without costal fold, with all veins separate, $m_3 - cu_1$ somewhat approximate to one another basally; hindwing $rr - m_1$ stalked, $m_3 - cu_1$ originating in one point.

Male genitalia (Figs 3, 4): Upper part of tegumen expanding laterally; pedunculus very short; gnathos simple; uncus very slender, distinctly sclerotized, naked; socius semimembranous, drooping, hairy. Valva slender, expanding ventro-anteriorly; costa of valva long, weak in distal third; termination of sacculus free, minutely spined; disc scarcely hairy. Transtilla with bilobe dorsal part forming a waste pocket; apodeme of muscle 2 slender, lateral; juxta with sclerotic posterior structure. Aedeagus simple; coecum penis large; cornutus capitate, probably originating from a fusion of two simple cornuti.

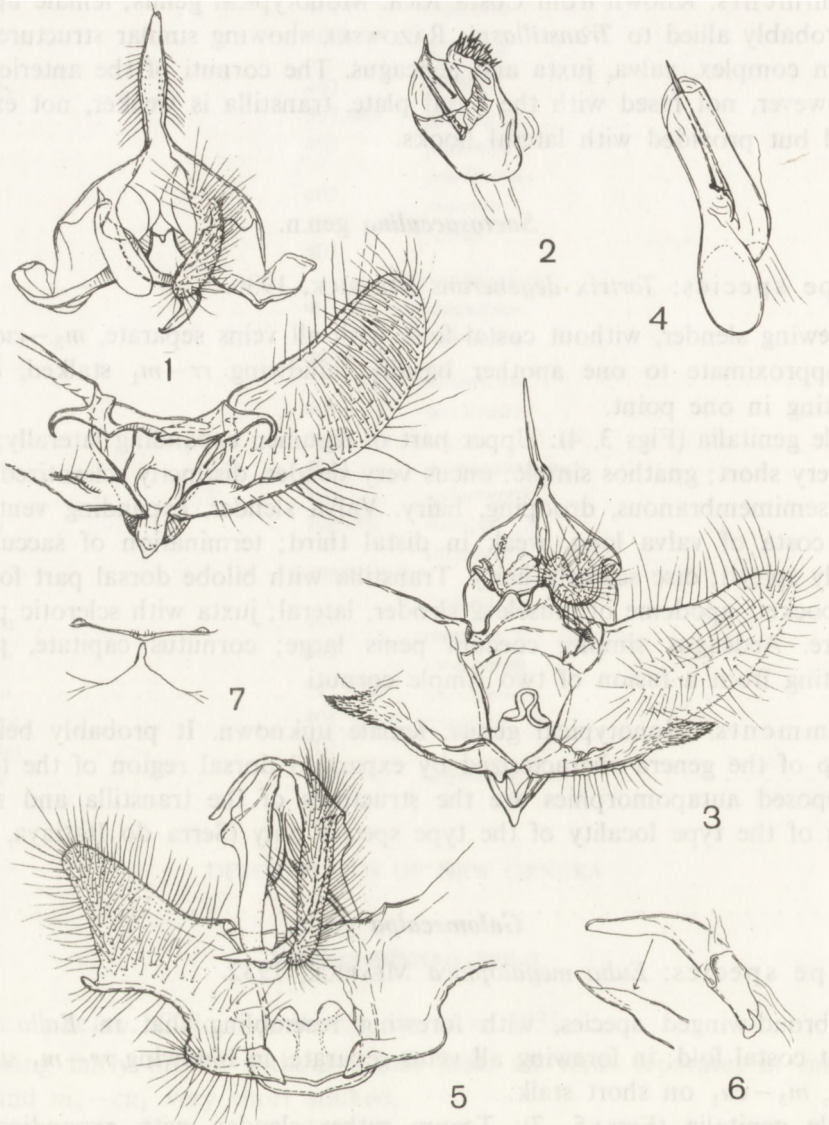
Comments. Monotypical genus; female unknown. It probably belongs to a group of the genera characterized by expanded dorsal region of the tegumen. Its supposed autapomorphies are the structures of the transtilla and sacculus. Known of the type locality of the type species only (Serra do Itatiaya, Brazil).

Galomecalpa gen.n.

Type species: *Eulia megaloplaca* MEYRICK, 1932.

A broad-winged species, with forewing resembling that in *Eulia* HÜBNER, without costal fold; in forewing all veins separate, in hindwing $rr - m_1$ stalked to middle, $m_3 - cu_1$ on short stalk.

Male genitalia (Figs 5–7): Tegumen rather slender, with expanding latero-posterior portions and long pedunculi; uncus very slender, curved, naked; gnathos simple, long; socius long, drooping, uniformly, densely hairy. Vinculum broad, without saccus. Valva rather specialised, with costa strongly sclerotized in basal fourth; sacculus sinuate ventrally, provided with simple free termination. Transtilla emarginate dorsally, with small group of spines medially and short, rounded apodemes of muscles 2, with ventral edge deeply incised medially. Juxta simple. Aedeagus delicate, simple; coecum penis fairly short, with apical plate being the apodeme of muscle 6; caulis vestigial, extending dorsad into a pair of lateral broad lobes; cornuti not realised.



Figs 1–7. Male genitalia: 1, 2 – *Subtranstillaspis hypochloris* (MEYRICK); 3, 4 – *Saetosacculina degenerans* (MEYRICK); 5–7 – *Galomecalpa megaloplaca* (MEYRICK).

Comments. The new genus resembles *Popayanita* RAZOWSKI but is distinct by the shape of the transtilla which works mainly with its dorso-median part. The terminal part of the tegumen is of same type as in the preceding genus and, as in several other genera (similarly as the structure of the transtilla is) resembling to some degree some Neotropical sparganothid genera. The genus is monobasic, known from Bolivia only. The name is the anagram of the name of the type species.

***Monimosocia* gen.n.**

Type species: *Eulia parvisignis* MEYRICK, 1931.

Forewing without costal fold in male; all veins separate; in hindwing veins $rr-m_1$ stalked to before middle, m_3-cu_1 extending from one point.

Male genitalia (Figs 8, 9): Tegumen very large, broad posteriorly, rigid; pedunculus fairly large; uncus strongly sclerotized, armed with latero-apical lobes; gnathos simple, with small apical plate; socius scarcely hairy, minutely spined in ventral area; vinculum delicate, slender, without saccus. Valva slender with costa long, sclerotized almost to the end of valva; sacculus slender, incised near middle ventrally, expanding, plate-shaped terminally; disc scarcely hairy, especially anteriorly. Aedeagus a small, simple tube; coecum penis short; caulis vestigial with lateral lobes situated beyond zone distinct; cornuti, a group of short spines. Transtilla band-shaped, folded along dorsum, with broad dorsal prominence; juxta small, tapering dorsally.

Comments. The new genus is distinct by the structures of the tegumen, uncus, socius and valva. A similar shape of the transtilla is occasionally found in the *Tortricidae*, but in a different combination of the remaining characters. The sclerotic prominences beyond zone resemble those in the preceding genus; the atrophy of the caulis is of convergent importance. The structure of the juxta is comparable with that in some other tortricid moths but insufficiently studied to date. The systematic position is unclear. It is monobasic, Brazilian in distribution (São Paulo).

***Harposcleritia* gen.n.**

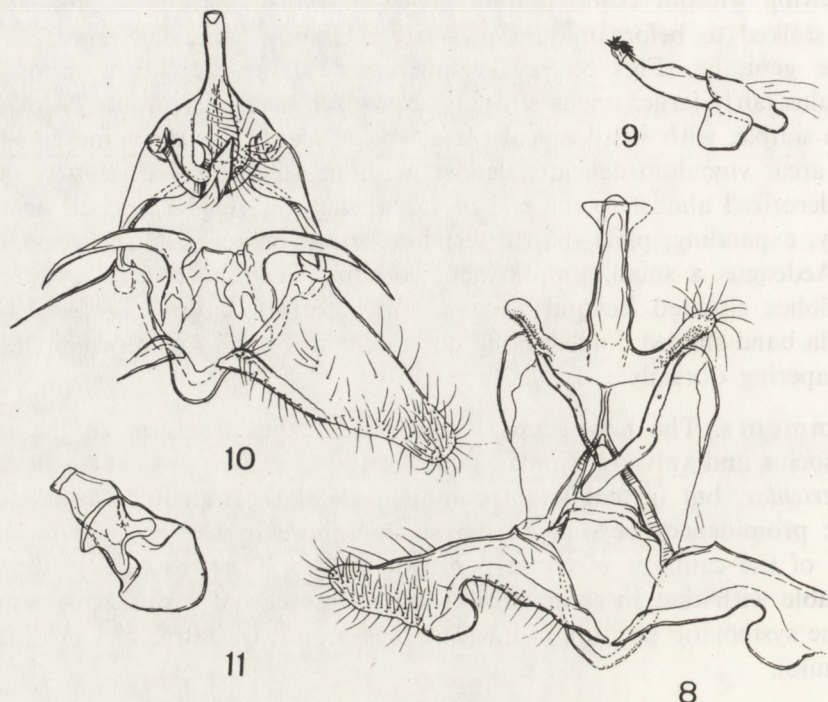
Type species: *Tortrix stictoneura* MEYRICK, 1930.

Forewing: Costal fold in male absent; all veins separate; in hindwing $rr-m_1$ stalked to about middle; m_3-cu_1 originating in one point.

Male genitalia (Figs 10, 11): Tegumen broad, tapering in distal portion towards uncus; uncus simple, slender, naked; socius delicate, drooping, scarcely hairy; gnathos simple, with proportionally large terminal plate. Vinculum delicate, with rounded ventro-anterior part. Valva tapering terminally, with rather delicate costa ill-defined in terminal fourth; sacculus simple, provided with small basal prominence; disc scarcely hairy. Aedeagus short; coecum penis very broad; juxta small, producing dorso-laterally; transtilla prominent in middle dorsally, connected with very large, rigid lateral processes of the anellus.

Comments. This genus is allied to the genera characterized by a distinct costa of the valva and a well sclerotized aedeagus, but a more precise determination of its systematic position seems impossible. It is distinct by the presence of the

peculiar processes of the anellus (probably originating in the membrane between the juxta and the transtilla). A monobasic genus known from the type locality (Serra do Itatiaya, Brazil) of its type species only.



Figs 8–11. Male genitalia: 8, 9 – *Monimosocia parvisignis* (MEYRICK); 10, 11 – *Harposcleritia stictoneura* (MEYRICK).

SYSTEMATIC REVIEW

Chlidanotini

Hynhamia hemileuca (MEYRICK, 1932: 256) (*Tortrix*); RAZOWSKI 1964: 472; 1987: 69 (*Hynhamia*).

Unplaced species:

Eulia multifurcata MEYRICK, 1932: 260; RAZOWSKI 1964: 461 (as *multistrigata* [sic!]).

Eulia sectionalis MEYRICK, 1932: 251; RAZOWSKI 1964: 463.

Polyorthini

Ardeutica crypsilitha (MEYRICK, 1932: 264) (*Polyortha*); RAZOWSKI 1964: 468; 1981: 313 (*Ardeutica*); RAZOWSKI and BECKER 1981: 391 (*Ardeutica*).

Polyortha halianassa MEYRICK, 1932: 264; RAZOWSKI 1964: 468; 1981: 313; RAZOWSKI and BECKER 1981: 393.

Orthocomotis trissophricta (MEYRICK, 1932: 259) (*Eulia*); RAZOWSKI 1964: 465; 1982: 35 (*Orthocomotis*).

Orthocomotis melanochlora (MEYRICK, 1931: 151) (*Eulia*); RAZOWSKI 1964: 460; CLARKE 1950:141 (*Orthocomotis*).

Paracomotis smaragdophaea (MEYRICK, 1932: 258) (*Eulia*); RAZOWSKI 1982: 33 (*Paracomotis*).

Cochylini

Carolella aphrobapta (MEYRICK, 1931: 152) (*Eulia*); RAZOWSKI 1964: 475 (*Carolella*); 1986a: 415 (*Carolella*).

Carolella molybdanthes (MEYRICK, 1932: 266) (*Phtheochroa*); RAZOWSKI 1964: 479; 1986b: 415 (*Carolella*).

Carolella selecta (MEYRICK, 1931: 158) (*Euxanthis*); RAZOWSKI 1964: 476; 1986b: 415 (*Carolella*); RAZOWSKI and BECKER 1983: 441 (*Carolella*).

Acarolella steropsis (MEYRICK, 1931: 158) (*Euxanthis*); RAZOWSKI 1964: 447; RAZOWSKI and BECKER 1983: 443 (*Acarolella*).

Aethesoides chalcospila (MEYRICK, 1932: 265) (*Phalonia*); RAZOWSKI 1964: 478; 1986b: 395 (*Aethesoides*).

Saphenista cordifera (MEYRICK, 1932: 267) (*Phtheochroa*); RAZOWSKI and BECKER 1983: 423 (*Saphenista*); RAZOWSKI 1986b: 403 (*Saphenista*).

Saphenista praefasciata (MEYRICK, 1932: 266) (*Phalonia*); RAZOWSKI 1964: 478; 1986b: 404 (*Saphenista*); 1986c: 455 (*Saphenista*).

Cirrothaumatia tornocarpa (MEYRICK, 1932: 267) (*Phtheochroa*); RAZOWSKI 1964: 480; **comb. n.**

Unplaced species:

Phtheochroa calyptrophanes MEYRICK, 1932: 266; RAZOWSKI, 1964: 480.

Anacrusini

The systematic arrangement except for *clivigera* is after the catalogue by POWELL and RAZOWSKI (in print).

Anacrusis rhizosema (MEYRICK, 1931: 152) (*Eulia*); RAZOWSKI 1964: 462.

Archipimima cosmoscelis (MEYRICK, 1932: 255) (*Tortrix*); RAZOWSKI 1964: 471.

Archipimima labyrinthopa (MEYRICK, 1932: 253) (*Cacoecia*); RAZOWSKI 1964: 455.

Unplaced species:

Capua ruficapilla MEYRICK, 1932: 252; RAZOWSKI 1964: 457.

Cacoecia clivigera MEYRICK, 1932: 253; RAZOWSKI 1964: 455.

Sparganothini

The systematic arrangement of the species except for *decagramma*, *biforata* and *thiodyta* is after the catalogue by POWELL and RAZOWSKI (in print).

Amorbia rectangularis MEYRICK, 1931: 55; RAZOWSKI 1964: 453.

Amorbia decagramma (MEYRICK, 1932: 252) (*Philedone*); RAZOWSKI 1964: 468 –
comb. n.

Amorbia chlorolyca MEYRICK, 1931: 155; RAZOWSKI 1964: 452.

Amorbia aequiflexa (MEYRICK, 1931: 149) (*Cacoecia*); RAZOWSKI 1964: 455.

Amorbia osmotris MEYRICK, 1932: 263; RAZOWSKI 1964: 452.

Amorbia elaeoptera MEYRICK, 1932: 263; RAZOWSKI 1964: 452.

Amorbia leptophracta (MEYRICK, 1931: 147) (*Capua*); RAZOWSKI 1964: 456.

Amorbia spilocryptis MEYRICK, 1932: 262; RAZOWSKI 1964: 454.

Platynota helianthes (MEYRICK, 1932: 264) (*Sparganothis*); RAZOWSKI 1964: 475.

Paramorbia chionophthalma (MEYRICK, 1932: 263); RAZOWSKI 1964: 473.

Rhynchophyllis categorica MEYRICK, 1932: 289. Not included in my paper of 1964; the dissected holotype (W.D.D. 3337) will probably be illustrated by Prof. J. A. POWELL.

Sparganopseustis geminorum (MEYRICK, 1931: 148) (*Capua*); RAZOWSKI 1964: 458.

Unplaced species:

Cacoecia biforata MEYRICK, 1930b: 244; RAZOWSKI 1964: 455.

Capua thiodyta MEYRICK, 1931: 148; RAZOWSKI 1964: 458.

Archipini

Subtranstillaspis hypochloris (MEYRICK, 1931: 153) (*Eulia*); RAZOWSKI 1964: 459;
comb. n.

Saetosacculina degenerans (MEYRICK, 1930b: 224) (*Tortrix*); RAZOWSKI 1964: 471;
comb. n.

Exoletuncus ocystolus (MEYRICK, 1932: 259); RAZOWSKI 1964: 462; comb. n.

Galomecalpa megaloplaca (MEYRICK, 1932: 288) – comb. n. Holotype, male labelled “Cuesta von Cilluticara, Bolivia, bis 3500 m., Coll. FASSL”, G. S. 10937 [RAZOWSKI]. The genitalia are described on p. 397.

Monimosocia parvisignis (MEYRICK, 1931: 152) (*Eulia*); RAZOWSKI 1964: 462;
comb. n.

Harposcleritia stictoneura (MEYRICK, 1930b: 224) (*Tortrix*); RAZOWSKI 1964: 472;
comb. n.

Pseudomeritastis heliadelpha (MEYRICK, 1932: 261) (*Meritastis*); RAZOWSKI 1964: 467; OBRAZTSOV 1966: 227 (*Pseudomeritastis*).

Chrysoxena tephrodelta (MEYRICK, 1932: 260) (*Eulia*); RAZOWSKI 1964: 465;
POWELL and RAZOWSKI in litt. (*Chrysoxena*).

Chrysoxena vulpicoma (MEYRICK, 1932: 261) (*Spatalistis*); RAZOWSKI 1964: 475;
POWELL and RAZOWSKI in litt. (*Chrysoxena*).

Dorithia exanthina (MEYRICK, 1932: 257) (*Eulia*); RAZOWSKI 1964: 458;
RAZOWSKI and BECKER 1989: 298 (*Dorithia*).

Tapinodoxa autonephes MEYRICK, 1931: 154; RAZOWSKI 1964: 468; OBRAZTSOV 1960: 25 (belonging to *Phaloniidae* = *Cochylidae*).

Terinebrica phaloniodes (MEYRICK, 1932: 257) (*Eulia*); RAZOWSKI 1964: 457 (?*Aethes*); comb. n.

Bonagota salubricola (MEYRICK, 1931: 153) (*Eulia*); RAZOWSKI 1986: 25 (*Bonagota*). The type specimen deposited in the Vienna Museum and treated as the lectotype does not differ externally from two lectoparatypes of the British Museum (NH) which belong to the genus *Bonagota* RAZOWSKI. However, the genitalia (on slide 10617 done by J. F. G. C. [LARKE]) belong to an eucosmid-moth. Thus one can suppose the abdomen was attached to the specimen.

Clarkeulia exstinctrix (MEYRICK, 1931: 153) (*Eulia*); CLARKE 1949: 588; RAZOWSKI 1964: 459; 1982: 44 (*Deltinea*, *Clarkeulia*); RAZOWSKI and BECKER 1984: 248 (*Clarkeulia*).

Argyrotaenia digachthes (MEYRICK, 1932: 257) (*Eulia*); RAZOWSKI 1964: 458 (as *oligachthes* [sic!], error).

Argyrotaenia purata (MEYRICK, 1932: 254) (*Tortrix*); RAZOWSKI 1964: 472; FREEMAN 1958: 53 (*Argyrotaenia*); OBRAZTSOV 1961: 41 (*Argyrotaenia*, *Subargyrotaenia*).

Argyrotaenia tristriata (MEYRICK, 1931: 152) (*Eulia*); RAZOWSKI 1964: 465; comb. n.

Argyrotaenia iopsamma (MEYRICK, 1931: 150) (*Tortrix*); RAZOWSKI 1964: 472; comb. n.

Argyrotaenia artocopa (MEYRICK, 1932: 255) (*Tortrix*); RAZOWSKI 1964: 470; comb. n.

Unplaced species:

Eulia chionocarpa MEYRICK, 1932: 257; RAZOWSKI 1964: 458.

Eulia niphastra MEYRICK, 1932: 151; RAZOWSKI 1964: 461.

Eucosmini: Grapholitina

Cydia fabivora (MEYRICK, 1928) = *Eulia prosecta* MEYRICK, 1932: 259; RAZOWSKI 1964: 462.

REFERENCES

- CLARKE J. F. G. 1949. Notes on South American "*Tortricidae*" (*Lepidoptera*) and descriptions of new species. *Acta zool. Lilloana, Tucuman*, 7: 579–588.
- CLARKE J. F. G. 1955. Neotropical moths of the genus *Orthocomotis* DOGNIN (*Lepidoptera: Tortricidae*). *Trans. R. ent. Soc. Lond., London*, 1955: 139–168.
- FREEMAN T. N. 1958. The *Archipinae* of North America (*Lepidoptera: Tortricidae*). *Can. Ent., Ottawa*, Suppl. 7.
- MEYRICK E. 1930–1936. Exotic *Microlepidoptera*. London, vol. 4, 1930: 1–32, 1931: 33–192, 1932: 193–352, 1933: 353–488; vol. 5, 1936: 1–64.
- MEYRICK E. 1930b. Ergebnisse einer zoologischen Sammelreise nach Brasilien, insbesondere in das Amazonasgebiet, aufgeführt von Dr. H. ZERNY. V. Teil. *Microlepidoptera*. *Ann. naturhist. Mus. Wien*, 44: 223–268, 2 tt.

- OBRAZTSOV N. S. 1960. On the systematic position of two genera erroneously placed in the family *Tortricidae* (*Lepidoptera*). J. N. Y. ent. Soc., New York, **68**:21–26.
- OBRAZTSOV N. S. 1961. Descriptions and notes on North and Central American species of *Argyrotaenia* with description of a new genus (*Lepidoptera*, *Tortricidae*). Am. Mus. Novit., New York, No. 2048.
- OBRAZTSOV N. S. 1966. Neotropical *Microlepidoptera*, VII: New genus *Pseudomeritastis* and its species (*Lepidoptera*: *Tortricidae*). Proc. U. S. nation. Mus., No. 118: 221–232.
- POWELL J. A., RAZOWSKI J. [in print]. *Tortricinae* [in:] J. B. HEPPNER, Checklist of Neotropical *Lepidoptera*.
- RAZOWSKI J. 1964. MEYRICK types of *Tortricoidea* (*Lepidoptera*) in the Vienna Museum. Ann. zool., Warszawa, **22**: 451–482.
- RAZOWSKI J. 1981. Notes on the system of *Polyorthini* (*Lepidoptera*, *Tortricidae*). Acta zool. cracov., Kraków, **25**: 309–318.
- RAZOWSKI J. 1982a. Notes on *Orthocomotis* DOGNIN (*Lepidoptera*: *Tortricidae*) with descriptions of new taxa. Bull. Acad. pol. Sci., Sér. Sci. biol., Varsovie, **30**: 29–36.
- RAZOWSKI J. 1982b. Redescription of *Deltinea* PASTRANA with descriptions of new species (*Lepidoptera*: *Tortricidae*). Bull. Acad. pol. Sci., Sér. Sci. biol., Varsovie, **30**: 37–45.
- RAZOWSKI J. 1986a. Synopsis of *Carolella* BUSCK (*Lepidoptera*, *Tortricidae*) with descriptions of new species and *Mimeugnosta* gen. n. Acta zool. cracov., Kraków, **29**: 409–422.
- RAZOWSKI J. 1986b. Catalogue of *Saphenista* WALSM. (*Lepidoptera*, *Tortricidae*) with descriptions of new species. Acta zool. cracov., Kraków, **29**: 397–408.
- RAZOWSKI J. 1986c. New and little known Neotropical *Cochylidii* (*Lepidoptera*, *Tortricidae*). Acta zool. cracov., Kraków, **29**: 373–396.
- RAZOWSKI J. 1986d. List of Neotropical *Aethes* BILLB. and *Aethesoides* RAZ. (*Lepidoptera*, *Tortricidae*) with descriptions of new species. Ann. zool., Warszawa, **40**: 337–396.
- RAZOWSKI J. 1986e. Descriptions of new Neotropical genera of *Archipini* and rectification of the *Deltinea* problem. Sciences nat., Compiègne, **51**: 21–26.
- RAZOWSKI J., BECKER V. O. 1981. Brazilian *Polyorthini* (*Lepidoptera*, *Tortricidae*). Acta zool. cracov., Kraków, **25**: 389–404.
- RAZOWSKI J., BECKER V. O. 1981. Brazilian *Cochylidii* (*Lepidoptera*, *Tortricidae*). Acta zool. cracov., Kraków, **26**: 421–464.
- RAZOWSKI J., BECKER V. O. 1984. Brazilian species of *Clarkeulia* RAZOWSKI (*Lepidoptera*: *Tortricidae*). Acta zool. cracov., Kraków, **27**: 245–268.
- RAZOWSKI J., BECKER V. O. 1989. Brazilian species of *Chrysoxena* MEYRICK and *Doritia* POWELL (*Lepidoptera*: *Tortricidae*). Bull. Acad. pol. Sci., Sér. Sci. biol., Varsovie, **37**: 289–298.

Instytut Systematyki
i Ewolucji Zwierząt PAN
Sławkowska 17, 31-016 Kraków

STRESZCZENIE

[Tytuł: Uwagi do katalogu typów *Tortricidae* (*Lepidoptera*) w Muzeum Wiedeńskim opisanych przez MEYRICKA oraz opisy nowych rodzajów]

Praca zawiera uwagi do katalogu typów deskrypcyjnych *Tortricidae* opisanych przez MEYRICKA i znajdujących się w Muzeum Wiedeńskim (RAZOWSKI 1964) oraz opisy pięciu nowych rodzajów.

[Заглавие: Заметки о Каталоге типов *Tortricidae* (*Lepidoptera*) находящихся во Венском музее описанных Мейриком и описания новых родов]

В работе помещены заметки к каталогу дескриптивных типов *Tortricidae* описанных Мейриком и находящихся во Венском музее (RAZOWSKI 1964), а также описания пяти новых родов.
